

2021 ANNUAL REPORT

The Girl Friends Fund, Incorporated®
Bringing Dreams to Life



External Audit Report
June 30, 2021

Financial Report
July 1, 2020 - April 30, 2021

Report of Contributions
July 1, 2020 - May 31, 2021

Bringing Dreams to Life



The Girl Friends Fund, Incorporated®

ANNUAL REPORT

CONTENTS

LETTERS AND REPORTS

President's Message	4
History of The Girl Friends Fund, Inc. ®	8
Past Presidents Emeriti	12
Vice President & Communications Chair	13
Secretary	14
Assistant Secretary	15
Financial Secretary	16
Treasurer	18
Investment Report	20
Internal Audit Committee Report	22
Independent Auditor's Report	23

SCHOLARSHIPS

Scholarship Committee Report	36
2021 Scholarship Recipients	38
Named Scholarships of Distinction	40
Esther C. Marionaux Endowment Fund	42
General/Named Scholarship Donations	45

MORE REPORTS AND INFORMATION

Chapter Challenge	62
Eunice Shreeves Scholarship Luncheon Report	64
Fund Development/Fundraising Report	66
Special Projects Fundraising Report	68
Silent Auction Report	70
Nominating Committee	71
Committee Chairs	72
Directors 2020-2021	74
Directors/Officers 2020-2021	75

President's Message



Ann Walters-Pope
Miami

Dear Girl Friends,

Thank you for entrusting me with the leadership of the Girl Friends Fund these last two years. I continue to be humbled by your confidence in me and hope that I have left an indelible mark on The Fund. I remain truly grateful, honored and excited to have been elected as the 14th National President of The Girl Friends Fund, Inc.®

A lot of progress has been made in the fight against COVID-19, and yet we still have a ways to go. The Girl Friends Fund, Inc.® sincerely hopes that you and your loved ones are well and continuing to take every precaution to ensure your health and well-being.

Despite the challenges facing all Americans, The Fund is thriving. The journey to date has forced us to be open-minded in our approach to fundraising strategies that ensure the continued growth and the ability to fund scholarships. I am therefore, delighted to share with you the Annual Report of The Girl Friends Fund, Inc.®

Together with our dedicated Board of Directors, we have been continually reviewing our operations and establishing new systems for improving our fundraising capabilities to enact our administrative theme of **Growing Future Funding**. Our mission continues to focus on *Bringing Dreams to Life* as we provide scholarships and mentoring to high-achieving African American students who face significant financial obstacles in their path toward a college education. While we are blessed to have so many Girl Friends to support The Fund, this past year we have been very successful in raising funds from corporations and individuals outside of the Girl Friends to strengthen our funding capabilities.

The **Growing Future Funding** administration in its second year accomplished the following:

- ◆ Hosted a **Corporate Pursuit** Retreat that focused on identifying potential Corporate donors and strategies to solicit their support.
- ◆ Launched **Give Lively**, a new online donation platform that provides donors with immediate thank you letters. A total of 642 transactions were processed to date equaling \$83,205.
- ◆ Implemented and designed the first ever **Giving Tuesday** Campaign that raised over \$16,000.
- ◆ Designed the **ScholarSip** mug artwork and collaboratively implemented a fundraising program that raised over \$10,000.
- ◆ First-time record-breaking **Eunice Shreeves Scholarship Luncheon** generating income in excess of \$45,000.

- ◆ Partnered with the *Alzheimer's Association* to become co-investigators on their *R25 Grant* application. GFF Scholars will comprise the pool of awardees for the grant.
- ◆ Establishment of an *Alzheimer's Association Named Scholarship* in the amount of \$6,000.
- ◆ Reviewed current *GFF Bylaws* (last reviewed in 2015), scrubbed document and presented amendments for voting consideration by the members at the Annual Meeting of the Membership. All amendments passed successfully.
- ◆ Started the review of the *GFF Policies and Procedures* for updates and implementation consistency.
- ◆ Facilitated preparation and timely filing of *Form 990* and upload to the GFF website.
- ◆ Hired an auditing firm, Lori Orta, CPA to examine the financial state of The Fund and complete the *2020 External Audit Report* that is found in this document and uploaded to the GFF website.

We are projected to provide \$54,500 to 37 eligible returning scholars that includes the 10 first-time scholars awarded \$1,000 for four years in 2019. The GFF Board approved awarding 15 new scholars in 2021 for a 4-year period at \$1500 per year for a total commitment of \$90,00. In addition, the Alzheimer's Association Named Scholarship allows for an additional scholar to be awarded bringing our total to 16 scholars resulting in a funding commitment of \$96,000. Thank you Girl Friends, particularly for your vote in passing The Girl Friends®, Inc. Bylaw that ensures the National Project monies is awarded to the fund on even years. It is through this support and that of corporations and other individuals that we can renew and increase scholarship awards. Thank you.

The pandemic continues to make us adhere to social distancing, and thus we have virtual meetings. This year's Annual Meeting of the Membership was a virtual meeting to provide an update to the members and vote on the proposed GFF Bylaw amendments and new Board Directors.

The 2021 Eunice Shreeves Scholarship Luncheon themed *Pairings with a Purpose* sold out with an unprecedented 280 tickets. The virtual gathering was an enjoyable afternoon preparing and pairing savory hors d'oeuvres with select wines as the 2021 scholarship recipients were unveiled.

We have indeed received tremendous support this year. As of May 31, 2020, we received \$167,428.04. More funds have been committed and are still being received!!

Girl Friends, we say **THANK YOU**, to you and to the many donors for your great generosity!!! To our Board of Directors, I extend a warm thank you for unselfish giving of your time, talent and treasure and for supporting me during these two years. It was an honor to serve. Please continue to be health-conscious and diligent.

We remain prayerful, safe and encouraged together.

In Friendship,



GF Ann E. Walters-Pope

14th National President, The Girl Friends Fund, Inc.®





Corporate Pursuit



GFF. The Girl Friends Fund, Inc.

III
EDITION
11/20

NEWSLETTER

Bringing Dreams to Life!

President's Message

Hello Girl Friends and Boy Friends,

Happy Friendship Month!



Welcome to the third edition of our *Bringing Dreams to Life* newsletter, a publication of The Girl Friends Fund, Inc. (The Fund). As we continue to navigate through this unprecedented COVID-19 pandemic, we pray that you and your loved ones are staying safe, well and socially distanced. The Fund is gearing up for a productive year of raising funds to assist with *Bringing Dreams to Life* for the many students who are still fulfilling their dreams of a college education. On behalf of the Board of Directors of The Girl Friends Fund, Inc. and the many scholars who benefit from 4-year scholarships – we extend a BIG THANK YOU to all the Girl Friends and Chapters that supported the amendment to The Girl Friends', Inc bylaws awarding the National Project proceeds to the fund in even years...THANK YOU GIRL FRIENDS!!!

We also extend a warm and girl friendly welcome to the Golden State Chapter, the 48th chapter of The Girl Friends', Inc. that was installed on September 18, 2020. Welcome GOLDEN STATE Girl Friends!!! You are expanding our circle of friendship.

We are excited to welcome the two newest directors to The Fund – GF Lori Parker from the Dallas Chapter and our first Boy Friend Director BF Frank Sims from the Atlanta Chapter. We are most delighted to welcome you both to the Board.

Lastly, we are excited to share that we created a GFF email address to receive inquiries – info@girlfriendsfund.org and we have a new and secure online donation platform that will provide you with a drastically improved online giving experience. Give Lively has better online fundraising tech and provides it to nonprofits, like GFF, for free! You will enjoy Digital Fundraising with Campaign Pages, Donation Widgets and Text-to-Donate features along with Event Ticketing that we are using for our Spectacular Jewelry Event Sales. We will offer Peer-to-Peer fundraising and even Team Fundraising.

Thank you for your continued support. Wishing you and your families a blessed Thanksgiving. Enjoy the newsletter! Please give. Please vote. Please remain safe and well.

Growing Future Funding,

Ann E. Walters-Pope

President
The Girl Friends Fund, Inc.®

A single rose can be my garden... a single friend, my world.

give lively



BYLAWS



GFF

Girl Friends Give

#GivingTuesday



Scholar Sip

The Girl Friends Fund, Inc.®

Pairings with a Purpose



2021

The Girl Friends Fund, Inc.®

Welcomes the

alzheimer's 
association®

To the Family of

Dedicated Supporters

Helping in

Bringing Dreams to Life



The Girl Friends Fund, Inc.®

History

The Girl Friends Fund, Inc.® (GFF, Inc.) was incorporated in Texas on February 22, 1988 and was recognized as a non-profit charitable organization by a five-year advance ruling from the Internal Revenue Service (IRS) on June 30, 1989, The Final Ruling of the IRS that the GFF, Inc. continue operation as a non-profit charitable organization was received from the IRS on December 1, 2008.

The GFF, Inc. was the brainchild of Girl Friends (GF/GFs) Erska Posten and Helen Wright, past national presidents of the Girl Friends®, Inc. (GF, Inc.) Prior to the 1987 Girl Friends Conclave, GF, Inc. national president GF Carolyn Wells appointed a three-member committee to explore the feasibility of securing a 501 C-3 public charity tax exemption from the IRS for the GF, Inc. Members of the committee were GFs Joan Sessoms Ford (Chairperson), Helen Wright (Advisory Board Chairperson) and Yvonne Gandy. At the committee's recommendation the delegates to the 1987 GF, Inc. Conclave approved the establishment of a separate charitable corporation to which tax-deductible contributions could be made. The mission of this corporation was financial assistance for college bound students who demonstrated financial need and distribution of proceeds from fundraising for other charitable purposes. This separate fund was named "The Girl Friends Fund" by vote of the Conclave delegates.

Initial Board members elected as required for incorporation in Texas, were GFs Rebecca Kingslow (Chairperson), Lucille Blondin and Joan Sessoms Ford. In turn they elected as initial officers GFs Konnetta P. Sparks, President and Yvonne Gandy, Secretary-Treasurer to serve until the first GFF, Inc. Board of Directors meeting. As Legal Counsel, Joan Sessoms Ford was charged with preparation of all documents necessary for incorporation and filing with the IRS for tax exempt charitable status. Five members of the Dallas GF, Inc. Chapter served as incorporators and signed the document for filing for incorporation on December 22, 1989.

The first meeting of the GFF, Inc. Board of Directors occurred at the Peabody Hotel in Memphis, Texas on May 27, 1989, and was convened by Interim President, Konnetta Sparks. Upon her election as the first president of the GFF, Inc., Chrystine Shack assumed the presidential role and proceeded with the meeting. Other initial officers were GFs Margaret Bush Wilson (Vice President), Cecile Springer (Secretary) and Lucille Blondin (Treasurer.) The first Directors were GFs Paquita Attaway, Lucille Blondin, Joan Sessoms Ford, Mae Johnson, Rebecca Kingslow, Irma Roy, Margaret Rucker, Chrystine Shack, Cecile Springer, Margaret Bush Wilson, and Konnetta P. Sparks (ex-officio.) A projected three-year budget needed for filing with the IRS was developed by Yvonne Gandy, Konnetta Sparks, Cecile Springer and Helen Wright, dated May 27, 1989.

Revised by-laws developed by Joan Sessoms Ford were reviewed and commented upon by the GFF, Inc. Board and the GF, Inc. membership and were approved on May 24, 1990 at the GFF, Inc. first annual meeting in Orlando, Florida and signed by Chrystine Shack (President), Joan

The Girl Friends Fund, Inc.®

History



Sessoms Ford (Legal Counsel), Cecile Springer (Secretary) and Margaret Bush Wilson (Vice President.)

The first fundraiser of the GFF, Inc. was a Girl Friends Fund Wheel. This effort was a raffle spearheaded by GF Paquita Attaway on May 27, 1992 at the GFF, Inc. Annual Meeting in Pittsburgh, PA. GFs Rebecca Kingslow and Lucille Blondin presented the framework of the GFF, Inc. scholarship program to the GFF, Inc. Board, and the first scholarship was awarded in 1995 under the guidance of GF Florence Sharpless as Scholarship Chairperson.

The GFF, Inc. Endowment Fund was established in 2002 during the administration of GF Esther C. Marioneaux for whom the Endowment Fund was later named during the presidency of GF Lynda Carroll. GF Lynda awarded the first Esther C. Marioneaux Endowment Fund medallions to each Girl Friend who made a one-time \$250 donation to the Endowment Fund. This practice has been continued by each subsequent president.

In addition to the General Scholarship Fund, through the beneficence of Girl Friends and/or their families, the GFF, Inc. has created five additional “named scholarships,” called “Scholarships of Distinction” -the GF Carolyn M. Carter Memorial Scholarship, the Anita Peek Gilger, MD Trust, the GF Juanita P. Humphrey Scholarship, the GF Gwendolyn G. Johnson Scholarship and the GF Carole Temple Phillips Scholarship - which are awarded yearly.

The presidents of the GFF, Inc. have all spearheaded outstanding activities.

GF Konnetta P. Sparks (1989), Girl Friends, Inc. President in 1989, and interim GFF, Inc. President in 1989, led the establishment of the GFF, Inc. through every stage of its creation. She is considered the “Mother of the Girl Friends Fund, Inc.®”, and evidences the close bond between the GF, Inc. and the GFF, Inc.

GF Chrystine Shack (1989-1992) oversaw the approval of the Revised Bylaws, the approval of the first GFF, Inc. fundraiser and development and advancing of the framework for the Scholarship Program during her tenure.

GF Helen K. Wright (1992-1995) initiated a significant fundraiser of printing the GFF, Inc. bylaws in booklet form and sold to Girl Friends for \$10 each booklet and assured the purchase of the first Certificates of Deposit by the GFF, Inc.

GF Miriam Shropshire (1995-2000) worked tirelessly to raise money for GFF, Inc. scholarships.

GF Esther C. Marioneaux (2000-2002), in addition to starting the GFF, Inc. Endowment Fund, changed the composition of the Board to create transition terms to ensure that experienced Directors always remained a part of the Board.



The Girl Friends Fund, Inc.®

History

GF Lynda P. Carroll (2002-2005) initiated the giving of medallions for contributions of \$ 250 to the Endowment Fund. She oversaw the renaming of the Endowment Fund in honor of GF Esther C. Marioneaux, and initiated perpetual plaques inscribed with the names of Girl Friends giving \$250 or more. GF Linda also prepared the first Annual Report.

GF Phoebe A. Haddon, (2005-2007) consulted with a Certified Public Accountant (CPA) to identify GFF, Inc. financial data inadequacies and proposed a contract with that same CPA to correct those inadequacies and preserve the GFF, Inc.'s tax exempt status.

GF Carole T. Phillips (2007-2010) worked with the GFF, Inc.'s CPA in retrieving needed financial data for filing with the IRS. She secured the IRS Final Determination letter of tax exemption as a public charity for the GFF, Inc. required after the five-year advance ruling period. She created the Endowment Fund Certificates to honor donations beyond the initial \$250 donation. The Carole Temple Phillips named scholarship was created in 2010 by the then Board of Directors and made a recurring scholarship by GF Carole in 2014.

GF Elaine Effort (2010-2012) launched the Girl Friends Fund, Inc.® website, with a generous donation from the family of Cleveland GF Lillian H. Gregory, with legacy Girl Friends in the Cleveland, Potomac and California chapters. The GF Fund's interactive website allows scholars to apply online, encourages chapters to share special events and updates, and makes it easy and safe for GF members, family members, friends and other community and business resources to support the Fund through online donations.

GF Andrea L. Johnson (2012-2013) completed a comprehensive revision of the GFF, Inc. bylaws. She contracted for, and finalized, a complete GFF audit by a CPA established a Conflict of Interest Policy for the Board and established the GF Gwendolyn G. Johnson Scholarship in honor of her mother.

GF Cynthia Carter Cole (2013-2015) oversaw the GFF, Inc.'s most successful Silent Auction, partnering with St. Johns Knits to develop "GFF Shopping Days" that provided members a discount and allowed GFF, Inc. profit sharing. She also secured underwriting of a portion of the GFF, Inc. Luncheon by St. Johns Knits. GF Cindy partnered with the David Yurman Outlet in Las Vegas, which provided members discount shopping. She established the GF Carolyn M. Carter Scholarship in her mother's honor.

GF Cecelia B. Henderson (2015-2017) commissioned a limited-edition bracelet engraved with the GFF, Inc. logo on one side and 'Bringing Dreams to Life', on the other side. Bracelets were marketed to Girl Friends as a fundraiser. She also started the GFF, Inc. Book Fair in 2017 through partnership with Barnes and Noble. She initiated personalizing the Esther Marioneaux Endowment Fund Medallions with the name and Conclave date of the donors.

The Girl Friends Fund, Inc.®

History



GF LaVerne N. Boyd (2017-2019) successfully secured the trademarking of the GFF logo and the motto “Bringing Dreams to life”, and initiated the implementation of a Quick Books Financial Program for the membership of the GF, Inc. GF LaVerne commissioned a commemorative sterling silver bracelet, to memorialize the 2019 New York and future Conclaves. A Pioneer Campaign was also originated under her administration which, concurrently with the 30th Anniversary of the Fund, celebrated 48 Pioneer Girl Friends who initiated and formed the foundation for the Fund in a historically successful campaign at the 2019 Eunice Shreeves Luncheon.

GF Ann E. Walters-Pope (2019-Present) worked to secure the passing of the Girl Friends®, Inc. bylaw that now awards the National Project monies to the Girl Friends Fund on even years. She launched an individual member email communication system to reach the Fund’s over 1700+ members. In addition, she implemented a new online donation platform, Give Lively, that has made it easier to track donations and provides donors a thank you letter. During this unprecedented pandemic, GF Ann designed and implemented the first ever Giving Tuesday Campaign that raised over \$16,000. Additionally, under her administration a first-time partnership with the Alzheimer’s Association was established resulting in the funding of a named scholarship and the Fund’s participation in their R25 grant whose recipients will be GFF Scholars. The ScholarSip Campaign saw revenues of more than \$10,000 selling nearly 550 mugs. The GFF Bylaws were reviewed thoroughly, and proposed amendments sent to the members for review and approval. GF Ann created this year’s Eunice Shreeves Scholarship luncheon format and theme, Pairings with a Purpose, which included the first ever social media campaign. This year’s luncheon sold out with an unprecedented 280 tickets with income in excess of \$45,000.

All members of The Girl Friends®, Inc. are members of The Girl Friends Fund, Inc.® We are one team with one mission. In recognition of the special importance of access to higher education for all and despite widespread economic instability and rising tuition costs we remain committed to eradicating the inequalities in educational opportunities in particular for African American young women and young men that are low income and under-represented in universities and colleges across America. We have strength in numbers! We are a lifeline to our aspiring scholars and will remain so!

(We gratefully acknowledge the historical work of the 2015- 2017 History Committee: Co-Chairs GF Nina Jennings and GF Sheila J. Williams, the 2001 History of GF Cecile Springer, and the efforts of G.F. Lynne Bannister).

We also acknowledge GF Joan Sessoms Ford, Esq. for providing this original history write-up and also note that updates were added in May 2021.

Past Presidents Emeriti



GF Konnetta Sparks
(New York)
1989 (Interim)



GF Chrystine Shack *
(Memphis)
1989 – 1992



GF Helen Keith
Wright
(Cleveland)
1992 – 1995



GF Mirian C. Shropshire
(Atlanta)
1995 - 2000



GF Esther C. Marioneaux *
(Charlotte)
2000 – 2001



GF Lynda P. Carroll
(New Orleans)
2001-2005



GF Phoebe A. Haddon
(Philadelphia)
2005 – 2007



GF Carole Temple Phillips
(Brooklyn)
2007 – 2010



GF Elaine Effort
(Pittsburgh)
2010- 2012



GF Andrea L. Johnson
(California)
2012 – 2013



GF Cynthia Carter
(Boston)
2013 – 2015



GF Cecelia Henderson
(Buffalo)
2015 – 2017



GF LaVerne Nichols Boyd
(Cleveland)
2017-2019

Vice President & Communications

Chapter Liaison Chair

Dear Girl Friends,

It has been my pleasure to serve as Vice President to the Girl Friends Fund, Incorporated®, these past two years. The experience has been more than rewarding. It has been challenging, work, learning and fulfilling. In many organizations the vice president is the person on the sidelines waiting. This has not been the case under the administration of GFF President Ann Walters Pope.

As her vice president I have been involved in the operations of the Fund at various levels. Having been asked to chair the communications committee to the Girl Friends Fund has allowed me to become better acquainted with Girl Friends, Incorporated Chapter Presidents and Liaisons and gain knowledge of individual chapters workings and become known to their members.

As communications chair I have sought information from chapters, reported information about the GFF, shared updated information, sent communications from Fund committees, and helped format and seek articles for the GFF Newsletters. I have come to recognize names of Chapter Presidents and Liaisons and welcome the time when we are together in person to match the names with the faces.

As Vice President I have been actively involved serving on the executive committee, nominations committee, finance and investment committee, Bylaws, Policy and procedures, Silent Auctions, Special Fundraising, and of course the Annual Eunice Shreeves Luncheon Committee. Working on these committees has broaden my understanding of how the Fund functions and operates as well as appreciate the tremendous amount of effort members exert to fulfill the purpose the Fund.

Raising money for GFF is critical to achieving our mission of providing scholarships to our needy college students. One of the most fulfilling role of serving as a Director and Vice President of Girl Friends Fund Incorporated is knowing that the money goes to scholars. Yes, it can definitely be tasking and tiring, and Zoom meetings will make you want to “click off”. However, knowing I have had a role in “Bringing Dreams To Life” is worth it all.

I look forward to continuing working with the Girl Friends Fund Incorporated as its next President and promise to do my very best. I sincerely ask and need your support as the Fund moves forward.



Marie Latham Bush
Toledo

GF Marie Latham Bush
Toledo Chapter

Secretary

Dear Girl Friends,



Roslyn Thibodeaux Goodall
Dallas

My second year of service, as Secretary of the Board of The Girl Friends Fund, Inc.[®], has been very rewarding. In addition to the customary responsibilities of record keeping, I was blessed to be able to make other contributions to the organization, which I will share in this report. As was expected, I took minutes of and reported on all scheduled, monthly, board and called meetings. I recorded attendance of board members on a spreadsheet, for easy reference. I was honored to co-present, with Board President, GF Ann Walters-Pope, and take minutes, during the August, 2020 Board Retreat.

Minutes were taken and recorded for the following board and called meetings:

September, 2020	November, 2020	January, 2021	March, 2021
October, 2020	December, 2020	February, 2021	April, 2021

President Ann had special Birthday and Anniversary cards designed, that I mailed to all board members to acknowledge their celebratory occasion(s). I managed the GFF email account and forwarded emails to the appropriate board officer or responded, as appropriate. To help ensure all donors were properly acknowledged, I assisted the Assistant Secretary in researching mailing and email addresses.

As architect of the **ScholarSip Campaign**, I worked closely with the Financial Secretary to coordinate orders of the mugs, and arrange for shipment to the Chapter Liaison/representative. Where necessary, I worked with an ad-hoc committee of "willing worker" Board members to repack and ship orders of mugs that were less than 36.

To maximize donations to the Girl Friends Fund, Inc.[®], during the inaugural **Giving Tuesday**, I created online Give Lively and Facebook fundraisers to solicit my non-Girl Friend family and friends. Both fundraisers very successful.

As a member of the 2021 **Eunice Shreeves Scholarship Luncheon Committee**, I was successful in identifying the vintner for the event.

The **GFF Policies and Procedures** have not been totally revised, since 2014. I began the process to update this document, requesting that Board and Committee members either update or create information for their section(s) of responsibility.

In pursuit of funding for GFF scholarships, I created a dialogue between the GFF's board president and scholarship committee chair, and the VP of Medical Scientific Research and the Director of Diversity and Inclusion of the Alzheimer's Association and myself that resulted in a recommendation to the GFF Board that we serve as a Co-Investigator on their R25 grant application that would allow the GFF scholars to serve as the recruitment pool for the Alzheimer's Association's Summer Scientific Internship Program. Selected GFF scholars will be mentored by minority scientists as we attempt to fill the void of minority scientific researchers. Each internship is valued at roughly \$16,000. and includes travel, lodging, compensation and attendance at a conference. The recommendation was unanimously approved.

I have indeed benefitted from my second year as Board Secretary, through learning so much more about the inner-workings of The Girl Friends Fund, Inc.[®] More importantly, I got better acquainted with other Board members and met (via phone or ZOOM) many incredible and like minded Girl Friends who were also committed to **Bringing Dreams to Life** for our scholars. Thank you, for each and everything you did to support my service to our great organization.

Warm regards,

Roslyn Thibodeaux Goodall

Girl Friend Roslyn Thibodeaux Goodall, MBA
Dallas Chapter (Charter Member)

Assistant Secretary

Dear Girl Friends,

I began my responsibilities as Girl Friends Fund Assistant Secretary on July 1, 2020. It has been my primary responsibility to ensure that the generous donors of the Girl Friends Fund, Inc.® are acknowledged and received a gracious Thank You letter, consistent with IRS regulations, acknowledging their contributions.



Marcella Boyd Cox
Cleveland

I have reviewed records, drafted correspondence, and ensured timely mailing of these acknowledgments to our donors in concert with and under the direction of our Financial Secretary, GF Tamara Turnley Robinson. I have made certain that this function was both accurate and efficient.

It has been my distinguished privilege to serve in this capacity for the 2020-2021 term.

Girlfriendly,

Marcella Boyd Cox

GF Marcella Boyd Cox

The Girl Friends Fund, Incorporated®

Financial Secretary



Tamara Turnley Robinson
Atlanta

Dear Girl Friends Fund Board and Girl Friends,

Thank you very much for the opportunity to serve this special and wonderfully unique organization as Financial Secretary of The Girl Friends Fund, Inc.® My duties are to receive all monies directly from any source on behalf of The Girl Friends Fund, and to provide said monies for deposit to The Girl Friends Fund National Treasurer. The collaborative objective was to provide GF Lori Parker, National Treasurer with deposit transmittals of all funds received via check within 10 days of receipt. In addition, electronic donations continue to be a growing stream of donation revenue. My duties also include documenting all donations received from all online sources. I also joyfully endeavor to accurately designate all 'In honor of and In memory of' donation attributions.

I provide a monthly report to the GFF Board of Directors with a full accounting of all monies collected by category and source. I also provide a full accounting of revenue received during the year to all Girl Friends in the GFF Annual Report.

A sincere and heartfelt thank you to each of you for your continued generous support of The Fund, especially during another year of 'the pandemic'. Especially this year, your generosity has truly made a difference in the lives of our young scholars.

With warm Girl Friendly regards,

Tamara Turnley Robinson

Tamara Turnley Robinson

GFF Financial Secretary



Financial Secretary Report

Monies Received by Category, July 2020 - May 31, 2021

Column1	Column2
GFF Signature Jewelry	\$ 6,275.28
Esther Shreeves Scholarship Luncheon	\$ 45,676.01
General Donation	\$ 61,459.53
Esther Marioneaux Endowment Fund	\$ 10,281.68
Pioneer Camapaign	\$ 5,686.26
Gwendoyne Johnson Scholarship	\$ 1,500.00
Carolyn Carter Scholarship	\$ 352.56
Carole Temple Phillips Scholarship	\$ 5,000.00
Anita Peek Gilger Trust	\$ 16,000.00
Eunice Shreeves Silent Auction	\$ 3,993.66
Juanity Humphrey Scholarship	\$ 358.06
Other / Scholarsip	\$ 10,845.00
TOTAL	\$ 167,428.04

The Girl Friends Fund, Incorporated®

 **G**ROWING **F**UTURE **F**UNDING 

Treasurer



Lori L. Parker
Dallas

Dear Girl Friends Fund Board and Girl Friends,

It has indeed been a pleasure and an honor to serve as Treasurer under the phenomenal leadership of the Girl Friends Fund President GF Ann Walters-Pope.

As Treasurer for the 2020-2021 fiscal year, I had the fiduciary responsibility to ensure that all financial records were created and maintained according to General Accepted Accounting Principles (GAAP). It was my objective to present meticulous and accurate monthly financial reports for all bank accounts registered at Bank of America. The monthly financial reports consisted of all income (donations), expenditures (expenses), and any outstanding checks.

Additionally, my responsibilities included reconciling all bank accounts to ensure accurate closing balances, verifying that all vouchers had accompanying original receipts attached and deposits and checks were properly recorded. It was of the utmost importance to ensure the accountability of all accounts by safeguarding the GFF assets and ensuring financial controls were in place.

I would like to sincerely thank GF Ann and the GFF Board for allowing me to serve as your 2020-2021 Treasurer. I deeply appreciate all the support and encouragement I received from the Girl Friends Fund board. I would especially like to thank GF Tamara Turnley-Robinson for providing me with the necessary and accurate reports to complete my job effectively.

In Girl Friendly Service,

Lori L. Parker

GF Lori L. Parker

The Girl Friends Fund, Incorporated®



Treasurer's Report

Accounts	Checking Operating #1897	Checking Conclave #9764	Savings Committed #0753	Savings Restricted #4450	Savings Endowment #0458	Bank of America	Ameriprise Investments
Beginning Balance 07/01/2020	\$ 51,880.95	\$ 96.35	\$ 149,524.07	\$ 113,583.95	\$ 13,195.15	\$ 328,280.47	\$ 361,153.31
Fiscal Year 2020-2021 Income							
Monthly Income	FY2020-2021						FY2020-2021
July	\$ 3,415.00	\$ -	\$ 7.52	\$ 5.71	\$ 0.66	\$ 3,428.89	
August	\$ -	\$ -	\$ 5.84	\$ 4.44	\$ 0.52	\$ 10.80	
September	\$ 890.00	\$ -	\$ 5.38	\$ 4.66	\$ 0.54	\$ 900.58	
October	\$ -	\$ 24,420.95	\$ 4.00	\$ 4.81	\$ 0.56	\$ 24,430.32	
November	\$ 4,735.75	\$ -	\$ 3.87	\$ 4.66	\$ 0.54	\$ 4,744.82	
December	\$ 17,376.06	\$ -	\$ 4.00	\$ 4.81	\$ 1,000.56	\$ 18,385.43	
January	\$ 20,634.55	\$ -	\$ 4.02	\$ 4.82	\$ 300.55	\$ 20,943.94	
February*	\$ 1,324.34	\$ -	\$ 3.63	\$ 4.36	\$ 0.03	\$ 1,332.36	
March	\$ 34,702.68	\$ -	\$ 4.02	\$ 4.82	\$ 0.17	\$ 34,711.69	
April	\$ 64,903.67	\$ -	\$ 3.89	\$ 4.67	\$ 4,600.22	\$ 69,512.45	
Total Income as of 4/30/2021	\$ 147,982.05	\$ 24,420.95	\$ 46.17	\$ 47.76	\$ 5,904.35	\$ 178,401.28	\$ 356,802.56
Fiscal Year Expenses 2020-2021							
Monthly Expenses	Operating	Conclave	Committed	Restricted	Endowment		
July	\$ 3,070.52	\$ -	\$ -	\$ -	\$ -	\$ 3,070.52	
August	\$ 330.24	\$ -	\$ -	\$ -	\$ -	\$ 330.24	
September	\$ 78,175.00	\$ -	\$ -	\$ -	\$ -	\$ 78,175.00	
October	\$ 3,367.32	\$ -	\$ -	\$ -	\$ -	\$ 3,367.32	
November	\$ -	\$ -	\$ -	\$ -	\$ -	\$ -	
December	\$ 87.47	\$ -	\$ -	\$ -	\$ -	\$ 87.47	
January*	\$ 22,282.26	\$ -	\$ -	\$ -	\$ -	\$ 22,282.26	
February	\$ 1,457.61	\$ -	\$ -	\$ -	\$ -	\$ 1,457.61	
March	\$ 16,007.76	\$ -	\$ -	\$ -	\$ -	\$ 16,007.76	
April	\$ 749.51	\$ -	\$ -	\$ -	\$ -	\$ 749.51	
Total Expenses as of 04/30/2021	\$ 125,527.69	\$ -	\$ -	\$ -	\$ -	\$ 125,527.69	(125,527.69)
Board Approved Transfers							
9/1/2020	\$ 55,000.00	\$ -	\$ (55,000.00)	\$ -	\$ -		
1/1/2021	\$ 14,000.00	\$ -	\$ -	\$ -	\$ (14,000.00)		14,000.00
2/1/2021*	\$ 20,927.30	\$ (24,517.30)	\$ -	\$ -	\$ 3,590.00		
3/1/2021	\$ (250.00)	\$ -	\$ -	\$ -	\$ 250.00		
	\$ -	\$ -	\$ -	\$ -	\$ -		
	\$ -	\$ -	\$ -	\$ -	\$ -		
Board Approved Transfers	\$ 89,677.30	\$ (24,517.30)	\$ (55,000.00)	\$ -	\$ (10,160.00)	\$ -	
Bank Ending Balances as of 04/30/2021	\$ 164,012.61	0.00	\$ 94,570.24	\$ 113,631.71	\$ 8,939.50	\$ 381,154.06	\$ 381,154.06
Total Net Assets Bank of America & Ameriprise							\$ 756,307.37

Investment Committee

REPORT OF THE INVESTMENT COMMITTEE



Jacqueline Hrabowski
Chair/Baltimore

Hello Girl Friends,

Since 2014, The Girl Friends Fund® (GFF) Investments Account which the Board of Directors voted to officially name, the Esther Marioneaux Endowment Fund, has been professionally managed by Ameriprise Financial Services Incorporated (AFSI) in an Actively Diversified (AD) fund for Moderately Aggressive investors. The investment objective is to deliver risk-adjusted growth of capital to moderately aggressive investors. Last year, the GFF's Investment Committee reassessed the portfolio's purpose, future goals, risk tolerance, and time frame. Based upon the advice of our Ameriprise Fund Manager who referenced the volatility and uncertainty of the markets given the looming COVID-19 Pandemic, the GFF Board of Directors approved the change in asset allocation from Moderately Aggressive to Moderately Conservative.

The long-term growth of this portfolio has given the GFF the opportunity to fulfill its mission of providing college scholarships to deserving youth. In the Fall of 2021, the GFF will draw funds in the amount of \$12,000.00 from this account to provide a 4-year scholarship (\$6,000) to two deserving scholars. The Investment Committee will continue to monitor the performance of this account and make a determination annually on the amounts that can be applied to scholarships.

The GFF Investment Committee

GF Marie Latham Bush

GF Roslyn Thibodeaux Goodall

GF Lori Parker

GF Tamara Turnley Robinson

BF Frank Sims

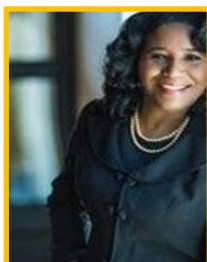
Girl Friendly ,
Jacqueline Hrabowski
GF Jacqueline Hrabowski



Marie Latham Bush



Roslyn Thibodeaux Goodall



Lori Parker



Tamara Turnley Robinson



Frank Sims

Investment Report

REPORT OF THE INVESTMENT ADVISOR

Dear Members of the Girl Friends Fund,

As the Financial Advisor to the Girl Friends Fund (GFF) portfolio managed by Ameriprise, it gives me great pleasure to provide an update on your account which I have managed since its inception.

Ameriprise Financial Services Incorporated (AFSI) is a professional money manager that manages the GFF funds in a diversified portfolio incurring reasonable risk in efforts to achieve incremental outperformance for long-term investors. It uses two key Solutions: 1) Asset Allocation and 2) Mutual Fund selection. Quarterly, the asset allocation is reviewed and revised as needed to maximize our potential returns given our risk tolerance. Mutual funds are selected based on the asset allocation targets and are monitored to ascertain that the fund is investing in the expected asset class and delivering competitive long-term performance. When a fund does not meet expectations, the fund is replaced. The tables highlight the asset allocation investment strategies held in the GFF Fund during the past two years.

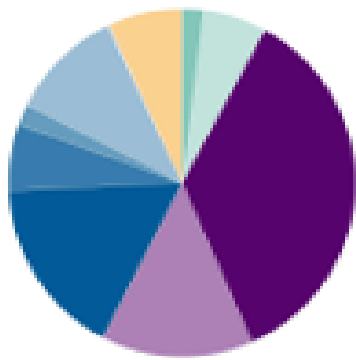
At the end of 2020, The GFF portfolio's moderately conservative allocation was 36% equities, 49% fixed income, 8% cash equivalents, and 7% alternative investments. Last year, The GFF paid fees of approximately 1% of the portfolio, totaling \$3,166. As of March 31, 2021, the GFF portfolio was valued at \$368,454, an increase of \$99,034 which included an additional contribution of \$14,000.

Thank you for the honor of over-seeing the management of The GFF portfolio which supports the academic success of our youth.

Respectfully Submitted,

William A. Bagby, Financial Advisor,

Associate Vice President, Ameriprise Financial



EXPANDED (IRG)	VALUE (\$)	(%)
CASH	7,161	2.02
CASH INVESTMENTS	20,953	5.91
CORE FIXED INCOME	125,735	35.46
NON-CORE FIXED INCOME	50,244	14.17
U.S. LARGE CAP	59,299	16.73
U.S. MID CAP	21,859	6.17
U.S. SMALL CAP	6,791	1.92
FOREIGN EQUITY	37,408	10.55
OTHER STOCK	585	0.16
ALTERNATIVE STRATEGIES	24,504	6.91
Total:	\$354,539	100%

Value of your investment accounts

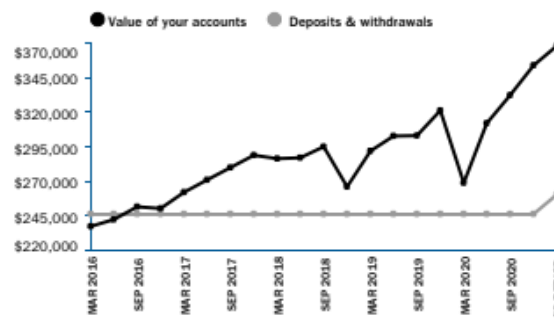
	This month	This year
Beginning value	\$353,597.64	\$354,140.13
Net deposits & withdrawals	\$14,000.00	\$14,000.00
Dividends, interest & income	\$549.55	\$1,302.91
Change in value	\$307.11	-\$988.74
Ending value	\$368,454.30	\$368,454.30

Your asset allocation

Asset class	Value on Mar 31, 2021	Percent of assets
Cash & cash investments*	\$29,998.31	8.1%
Fixed income	\$187,097.67	50.8%
Equities	\$129,060.54	35.0%
Alternatives	\$22,297.78	6.1%
Total assets	\$368,454.30	100%

*Cash investments includes cash held inside pooled investments (e.g. mutual funds), as part of a manager's investment strategy, and is not directly accessible unless you sell some of that investment. For details visit ameriprise.com/allocation.

Value of your investment accounts over time



This chart provides a five-year view of your account values. The black line shows the value of your accounts, while the gray line shows your net contributions (deposits less withdrawals).

Get all the details online at ameriprise.com. Click the Portfolio tab to find your latest account value, activity and asset allocation. Your Ameriprise financial advisor can help you understand how the stated account value shown here may differ from the amount you'd receive if you sold your assets (after any tax withholding, outstanding loans, pending transactions and potential fees).

Audit Committee Report



Barbara Lord Watkins
Chair/Dallas

Dear Girl Friends,

The Girl Friends Fund, Inc.® (GFF), established in 1988, is a **501 (c) 3 nonprofit organization** supported through generous, tax deductible donations from members of The Girl Friends®, Inc., corporate sponsors and the general public. All members of The Girl Friends®, Inc. are members of "The Fund".

An external audit was performed by Lori K. Orta, P.C, CPA for the fiscal year from July 1, 2019 through June 30, 2020.

The 990 form was filed on time for 2019-2020. In addition, appropriate bond insurance was renewed in a timely manner.

Committee Members

GF Kathlynnne Duffy Espy

GF Roslyn Thibodeaux Goodall

GF Casma Huie

GF Jacqueline Randolph

GF Barbara Lord Watkins, Chairman

The attached Independent Auditor's Report is inclusive of The Girl Friends Fund, Incorporated® Financial position, Statement of Activities and Changes in Net Assets, Cash Flows and Functional Expenses. There are several Notes to the Financial Statements related to Investments, Scholarships, Liquidity and Availability, Net Assets with Donor Restrictions and Board Designated Endowment that are also noted in the Financial Statements.



GF Kathlynnne D. Espy



GF Roslyn Thibodeaux Goodall



GF Casma Huie



GF Jacqueline Randolph

Audit Report

INDEPENDENT AUDITOR'S REPORT



To the GFF Board of Directors
The Girl Friends Fund, Inc. ®

We have audited the accompanying financial statements of The Girl Friends Fund, Inc. ® ("the Fund") (a nonprofit organization), which comprise the statement of financial position as of June 30, 2020, and the related statement of activities and changes in net assets, cash flows, and functional expenses for the year then ended, and the related notes to the financial statements.

Management's Responsibility for the Financial Statements

Management is responsible for the preparation and fair presentation of these financial statements in accordance with accounting principles generally accepted in the United States of America; this includes the design, implementation, and maintenance of internal control relevant to the preparation and fair presentation of financial statements that are free from material misstatement, whether due to fraud or error.

Auditor's Responsibility

Our responsibility is to express an opinion on these financial statements based on our audit. We conducted our audit in accordance with auditing standards generally accepted in the United States of America. Those standards require that we plan and perform the audit to obtain reasonable assurance about whether the financial statements are free from material misstatement.

An audit involves performing procedures to obtain audit evidence about the amounts and disclosures in the financial statements. The procedures selected depend on the auditor's judgment, including the assessment of the risks of material misstatement of the financial statements, whether due to fraud or error. In making those risk assessments, the auditor considers internal control relevant to the entity's preparation and fair presentation of the financial statements in order to design audit procedures that are appropriate in the circumstances, but not for the purpose of expressing an opinion on the effectiveness of the entity's internal control. Accordingly, we express no such opinion. An audit also includes evaluating the appropriateness of accounting policies used and the reasonableness of significant accounting estimates made by management, as well as evaluating the overall presentation of the financial statements.

We believe that the audit evidence we have obtained is sufficient and appropriate to provide a basis for our audit opinion.

Opinion

In our opinion, the financial statements referred to above present fairly, in all material respects, the financial position of the Fund as of June 30, 2020, and the changes in its net assets and its cash flows for the year then ended in accordance with accounting principles generally accepted in the United States of America.

Emphasis-of-Matter – Global Pandemic

As discussed in Note 9 to financial statements, the World Health Organization has characterized COVID-19 as a pandemic. While the Fund expects this matter to negatively impact its results, the extent of the impact of COVID-19 on the Fund's operational and financial performance will depend on future developments. Our opinion is not modified with respect to that matter. Dallas, Texas November 10, 2020

Lori K. Orta, P.C.

Dallas, Texas
November 10, 2020

5050 Quorum Drive, Suite 312, Dallas, Texas 75254 Telephone (972) 378-9510
Fax (214) 445-0657 Cell (972) 342-7115 Email: lkorta@lorikortapc.com
Website: www.lorikortapc.com

Audit Report
INDEPENDENT AUDITOR'S REPORT

The Girl Friends Fund, Inc.®

STATEMENT OF FINANCIAL POSITION

June 30, 2020

ASSETS

CURRENT ASSETS

Cash and cash equivalents	\$ 237,363
Cash and cash equivalents - with donor restrictions	117,473
Pledges receivable - with donor restrictions	3,415
Investments	<u>306,891</u>
Total current assets	<u>665,142</u>

TOTAL ASSETS	<u>\$ 665,142</u>
--------------	-------------------

LIABILITIES AND NET ASSETS

Accounts payable and accrued expenses	\$ 10,100
Accrued scholarships	<u>19,500</u>
Total current liabilities	<u>29,600</u>

NET ASSETS

Without donor restrictions	
GFF Board Designated	312,323
Undesignated	<u>202,331</u>
Total without donor restrictions	514,654
With donor restrictions	<u>120,888</u>
Total net assets	<u>635,542</u>

TOTAL LIABILITIES AND NET ASSETS	<u>\$ 665,142</u>
----------------------------------	-------------------

Audit Report

INDEPENDENT AUDITOR'S REPORT

The Girl Friends Fund, Inc.®

STATEMENT OF ACTIVITIES AND CHANGES IN NET ASSETS

For the Year Ended June 30, 2020

	Without Donor Restrictions	With Donor Restrictions	Total
SUPPORT AND REVENUES			
Contributions	\$ 54,318	\$ 39,717	\$ 94,035
Special events	24,300	-	24,300
Less: direct expenses	<u>(10,144)</u>	<u>-</u>	<u>(10,144)</u>
Net special events	14,156	-	14,156
Investment income - net of fees	9,133	-	9,133
Other income	149	-	149
Net assets released from restriction	<u>66,000</u>	<u>(66,000)</u>	<u>-</u>
Total support and revenues	<u>143,756</u>	<u>(26,283)</u>	<u>117,473</u>
EXPENSES			
Program services			
Scholarships	<u>66,000</u>	<u>-</u>	<u>66,000</u>
Total program services	66,000	-	66,000
Supporting services			
Management and general	10,033	-	10,033
Fundraising	<u>812</u>	<u>-</u>	<u>812</u>
Total supporting services	<u>10,845</u>	<u>-</u>	<u>10,845</u>
Total expenses	<u>76,845</u>	<u>-</u>	<u>76,845</u>
Changes in net assets	66,911	(26,283)	40,628
NET ASSETS, at beginning of year	<u>447,743</u>	<u>147,171</u>	<u>594,914</u>
NET ASSETS, at end of year	<u>\$ 514,654</u>	<u>\$ 120,888</u>	<u>\$ 635,542</u>

Audit Report
INDEPENDENT AUDITOR'S REPORT

The Girl Friends Fund, Inc.®

STATEMENT OF CASH FLOWS

For the Year Ended June 30, 2020

Cash flows from operating activities:

Changes in net assets \$ 40,628

Adjustments to reconcile change in net assets to net cash provided by (used in) oper-

Unrealized and realized gains on investments (576)

Change in operating assets and liabilities, net

Pledges receivable (3,415)

Accounts payable and accrued expenses 10,100

Net cash provided by operating activities 46,737

Cash flows from investing activities:

Purchase of investments (68,509)

Proceeds from sale of investments 59,758

Net cash used in investing activities (8,751)

Increase in cash and cash equivalents 37,986

Cash and cash equivalents, at beginning of year 316,850

Cash and cash equivalents, at end of year \$ 354,836

Reconciliation of cash and cash equivalents reported within the statement of financial position to the statement of cash flows

Cash and cash equivalents \$ 237,363

Cash and cash equivalents - with donor restrictions 117,473

Total cash and cash equivalents shown in the statements of cash flows \$ 354,836

Audit Report

INDEPENDENT AUDITOR'S REPORT

The Girl Friends Fund, Inc.®

STATEMENT OF FUNCTIONAL EXPENSES

For the Year Ended June 30, 2020

	Program Services	Supporting Services			
	Scholarships	Management And General	Fundraising	Total Supporting Services	Total Expenses
Scholarship expense	\$ 66,000	\$ -	\$ -	\$ -	\$ 66,000
Professional fees	-	7,558	-	7,558	7,558
Bank service fees	-	455	812	1,267	1,267
Board expenses	-	1,000	-	1,000	1,000
Printing	-	593	-	593	593
Other expenses	-	427	-	427	427
	<u>\$ 66,000</u>	<u>\$ 10,033</u>	<u>\$ 812</u>	<u>\$ 10,845</u>	<u>\$ 76,845</u>

NOTES TO THE FINANCIAL STATEMENTS

1. SUMMARY OF SIGNIFICANT ACCOUNTING POLICIES

Nature of Business

The Girl Friends Fund, Inc. (the "Fund"), is a nonprofit organization incorporated under the laws of the state of Texas. The Fund was established in 1988 to support deserving African American students with financial assistance through scholarships. The Fund's primary mission is to assist graduating high school seniors with the opportunity to attend and remain in a college or university to further their educational goals. The Fund also assists seniors and juniors in college with the financial assistance to apply for medical school, prepare for admissions testing, and attend the requisite school interviews. The Fund is an organization of like-minded professional women whose members volunteer their time, expertise, talents and resources to help shape our communities leaders of tomorrow, believing in "Bringing Dreams to Life"one scholar at a time. The Fund was designated as a 501(c)(3) entity in 1989.

Membership of the Fund consists of all active members in good standing of The Girl Friends, Inc. ("The GF, Inc."), one of the oldest social/civic organizations of African-Women women in the United States, established in 1927 and incorporated in 1938, with approximately 47 chapters to date across the country. Although the Annual Meeting of the Fund and its fundraising luncheon are held during the Conclave of the GF, Inc., the Fund is a separate entity and operates independently from The GF, Inc. as a public charity. Accordingly, the activities of The GF, Inc. are not included in the accompanying financial statements.

Audit Report

INDEPENDENT AUDITOR'S REPORT

1. SUMMARY OF SIGNIFICANT ACCOUNTING POLICIES (Continued)

The Fund's program is as follows:

Scholarships – The Fund brings dreams to life by providing scholarships and mentoring to high-achieving, African-American students who face significant financial obstacles in their path toward a college education. The Fund provides awards of \$1,000 to \$1,500 annually for up to four academic years, depending on availability of funds, to qualified high school seniors who have been accepted to a four-year institution. The scholarship is renewal for four years, provided applicants' academic requirements are met each year. The Fund's goal is to promote the academic achievement required to pursue careers including, but not limited to: Science, Technology, Engineering, Medicine, Law, Business, Education and Creative Arts.

The Fund is supported mainly by donations, fundraising events, and the volunteer service of the GFF Board and members.

Basis of Accounting

The accompanying financial statements have been prepared on the accrual basis of accounting in accordance with accounting principles generally accepted in the United States of America ("GAAP"). Net assets, revenues, gains, and losses are classified based on the existence or absence of donor or grantor-imposed restrictions. Accordingly, net assets and changes therein are classified and reported as follows:

Net assets without donor restrictions - Net assets available for use in general operations and not subject to donor restrictions. See Note 6.

Net assets with donor restrictions - Net assets subject to donor-imposed restrictions. Some donor-imposed restrictions are temporary in nature, such as those that will be met by the passage of time or other events specified by the donor. Other donor-imposed restrictions are perpetual in nature, where the donor stipulates that resources be maintained in perpetuity. Donor-imposed restrictions are released when a restriction expires, that is, when the stipulated time has elapsed, when the stipulated purpose for which the resource was restricted has been fulfilled, or both. See Note 5.

Cash and Cash Equivalents

Cash and cash equivalents consist of cash on hand and all highly liquid investments purchased with an initial maturity of three months or less. The FDIC deposit insurance insures deposits, money market accounts and certificates of deposit up to \$250,000 per depositor, per insured bank for each ownership category. The Fund maintains cash balances in accounts located in Dallas, Texas. There was approximately \$76,000 of uninsured balances at June 30, 2020.

Investments

At June 30, 2020, the Fund's investments in marketable securities consist of pooled institutional funds that are stated at their fair value in the accompanying statement of financial position. Interest, dividends, and realized and unrealized gains and losses are reported within investment returns in the accompanying statement of activities and changes in net assets as increases or decreases in net assets without donor restrictions unless their use is restricted by explicit donor stipulations. Investments at June 30, 2020, are held and managed by Ameriprise Financial Services Company.

Investment securities are exposed to various risks, such as interest rate, overall market volatility and credit risks. Due to the level of risk associated with certain investment securities, it is at least reasonably possible that changes in the values of investment securities will occur in the near term and that such changes could materially affect the Fund's account balances and the amounts reported in the statement of financial position. See Note 3.

Audit Report

INDEPENDENT AUDITOR'S REPORT

1. SUMMARY OF SIGNIFICANT ACCOUNTING POLICIES (Continued)

Fair Value Measurements

The Fund applies the GAAP authoritative guidance for fair value measurements and disclosures, which defines fair value, establishes a framework for measuring fair value, and requires certain disclosures about fair value measurements. GAAP describes three levels of inputs that may be used to measure fair value:

Level 1 - Quoted prices in active markets for identical assets or liabilities. An active market is a market in which transactions occur with sufficient frequency and volume to provide pricing information on an ongoing basis.

Level 2 - Significant other observable inputs other than Level 1 prices such as quoted prices for similar assets or liabilities, quoted prices in markets that are not active, or inputs that are observable or can be corroborated by observable market data.

Level 3 - Unobservable inputs that are supported by little or no market activity, are significant to the fair value of the assets or liabilities and reflect management's assumptions and best estimates based on available data.

Valuation techniques used fair value measurements needs to maximize the use of observable inputs and minimize the use of unobservable inputs. A valuation method may produce a fair value measurement that may not be indicative of net realizable value or reflective of future fair values. Furthermore, although management believes the valuation methods are appropriate and consistent with those used by other market participants, the use of different methodologies or assumptions could result in different fair value measurements at the reporting date.

Mutual funds are valued at quoted market, which for commingled funds represents the net asset value of shares held by the Fund at year end. There have been no changes to the methodologies used at June 30, 2020.

Financial Instruments

The carrying value of cash and cash equivalents, cash and cash equivalents – with donor restrictions, pledges receivable, and accrued scholarships approximate fair value due to the short-term maturities of these assets and liabilities

Scholarships

Scholarships are recognized when the student recipients have been approved by the Fund and when scholarship terms have been met. See Note 4.

Revenue Recognition

Contributions and grants are generally recorded only upon receipt unless evidence of an unconditional promise to give has been received. Unconditional promises to give (pledges receivable) that are expected to be collected in future years are recorded at the present value of the amounts expected to be collected and reduced by an allowance for uncollectible amounts. Conditional promises to give are recognized when the conditions to which they are subject are met.

Audit Report

INDEPENDENT AUDITOR'S REPORT

1. SUMMARY OF SIGNIFICANT ACCOUNTING POLICIES (Continued)

During fiscal year 2020, the Fund received notification of a \$30,000 gift for scholarships through a donor advised trust fund. The Fund anticipates receiving \$3,000 per year over the next ten years. This gift did not meet the criteria for recording in accordance with GAAP and is not included in the statement of activities and changes in net assets.

Contributed goods and services

Contributed services are reflected in the financial statements at the estimated fair value of the services received if the services received (a) create or enhance nonfinancial assets or (b) require, and are provided by, individuals with specialized skills, and would typically need to be purchased if not provided by donation. Many individuals volunteer their time and perform a variety of tasks that help The Fund. Volunteer hours totaling 2,992 with a value of \$76,086 were not reflected in the financial statements for the year ended June 30, 2020. However, these volunteer services are necessary to meet the Fund's mission.

Functional Allocation of Expenses

The costs of providing various programs and other activities have been summarized on a functional basis in the statements of activities and changes in net assets.

Use of Estimates

The preparation of financial statements in conformity with GAAP requires management to make estimates and assumptions that affect the reported amounts of assets and liabilities and disclosure of contingent assets and liabilities at the date of the financial statements. Accordingly, actual results could differ from those estimates.

Income Taxes

The Fund is exempt from federal income taxes under Section 501(c) (3) of the Internal Revenue Code. Accordingly, no provision for income taxes is reflected in the accompanying financial statements.

The Fund has concluded that it does not have any unrecognized tax benefits resulting from the current or prior period tax positions. Accordingly, no additional disclosures have been made on the financial statements regarding ASC 740, *Income Taxes*. The Fund does not have any outstanding interest or penalties, and none have been recorded in the statements of activities and changes in net assets for the year ended June 30, 2020. The Fund's informational returns filed are generally subject to examination for three years after the later of the due date or date of filing. As a result, The Fund is no longer subject to income tax examinations by tax authorities for years prior to 2017.

Audit Report

INDEPENDENT AUDITOR'S REPORT

1. SUMMARY OF SIGNIFICANT ACCOUNTING POLICIES (Continued)

Accounting Pronouncements Adopted

The Fund adopted Financial Accounting Standards Board ("FASB ") Accounting Standards Update ("ASU") 2016-14, *Presentation of Financial Statements of Not-for-Profit Entities* during year ended June 30, 2019. The ASU amends the current reporting model for nonprofit organizations and enhances their required disclosures. The major changes include: (a) requiring the presentation of only two classes of net assets now entitled "net assets without donor restrictions" and "net assets with donor restrictions", (b) modifying the presentation of underwater endowment funds and related disclosures, (c) requiring the use of the placed in service approach to recognize the expirations of restrictions on gifts used to acquire or construct long-lived assets absent explicit donor stipulations otherwise, (d) requiring that all nonprofits present an analysis of expenses by function and nature in either the statement of activities, a separate statement, or in the notes and disclose a summary of the allocation methods used to allocate costs, (e) requiring the disclosure of quantitative and qualitative information regarding liquidity and availability of resources, (f) presenting investment return net of external and direct expenses, and (g) modifying other financial statement reporting requirements and disclosures intended to increase the usefulness of nonprofit financial statements.

Implementation of ASU 2016-14 did not require reclassification or restatement of any opening balances related to the periods presented. The Fund's net assets previously reported as temporarily restricted are now reported as net assets with donor restrictions. Likewise, the Fund's net assets previously reported as unrestricted are now reported as net assets without donor restrictions.

In November 2016, the FASB issued ASU 2016-18 (Topic 230) – *Statement of Cash Flows*. This ASU requires entities to show the changes in the total of cash, cash equivalents and restricted cash in the statement of cash flows and reconcile those amounts to the statement of financial position. The Fund adopted ASU 2016-18 on December 31, 2019, and applied the provisions retrospectively to all periods presented in the financial statements. For the year ended June 30, 2020, the Fund added \$132,783 of restricted cash to the total cash and cash equivalents presented in the statements of cash flows. The Adoption of ASU 2016-18 had no impact to total unrestricted revenues, excess of revenues over expenses or total net assets.

In 2014, the FASB issued ASU 2014-09, *Revenue from Contracts with Customers* (Topic 606) which is a comprehensive new revenue recognition standard that will supersede existing revenue recognition guidance. The core principle of the guidance is that an entity should recognize revenue to depict the transfer of promised goods or services to customers in an amount that reflects the consideration to which the entity expects to be entitled in exchange for those goods or services. The entity should recognize revenue when (or as) the entity satisfies a performance obligation. Not-for-profit entities must consider whether certain arrangements are fully or partially subject to Topic 606. Examples include, but are not limited to memberships, sponsorships, grants and contracts. Further, judgment is required to bifurcate transactions between contribution and exchange components. The Fund has adopted this ASU as of and for the year ended June 30, 2020.

Audit Report

INDEPENDENT AUDITOR'S REPORT

1. SUMMARY OF SIGNIFICANT ACCOUNTING POLICIES (Continued)

In 2018, the FASB issued ASU 2018-08, *Clarifying the Scope and Accounting Guidance for Contributions Received and Made* to address difficulty and diversity in practice among not-for-profit entities in (1) evaluating whether transactions should be accounted for as contributions (nonreciprocal transactions) subject to Topic 958, Not-for-Profit Entities or as exchanges (reciprocal transactions) subject to Topic 606 and (2) determining between conditional and unconditional contributions. This ASU applies to all entities that receive or make contributions.

The term used in the presentation of financial statements to label revenue (for example, contributions and grants and tuition and fees) that is accounted for within Topic 958 is not a factor for determining whether an agreement is within the scope of that guidance. The Fund has adopted this ASU as of and for the year ended June 30, 2020.

2. LIQUIDITY AND AVAILABILITY

The Fund monitors its liquidity in order to meet operating needs and other contractual commitments while maintaining sufficient resources to meet donor restrictions placed on contributed financial assets.

As a part of the Fund's liquidity management, it has a policy to structure its financial assets to be available as its general expenditures, liabilities, and other obligations come due. The Fund regularly monitors liquidity and resources required to meet its operational needs and other contractual commitments. The Fund receives contributions with donor restrictions and without donor restrictions by donors, and considers these contributions which are ongoing, major, and central to its annual operations to be available to meet cash needs for general expenditures.

The following reflects the Fund's financial assets as of June 30, 2020. Amounts available include donor restricted amounts that are available for general expenditure in the following year.

Financial assets

Cash and cash equivalents	\$ 354,836
Pledges receivable	3,415
Investments	<u>306,891</u>
Total financial assets	665,142
Less amounts not available to be used within one year, due to	
Designated by GFF Board	<u>(312,323)</u>
Financial assets available to meet general expenditures within one year	<u>\$ 352,819</u>

Audit Report

INDEPENDENT AUDITOR'S REPORT

3. INVESTMENTS

The Fund maintains cash and investments which are insured under Securities Investor Protection Corporation ("SIPC") limits. SIPC provides up to \$500,000 of protection for securities, which includes a \$250,000 limit for cash per customer. There were no uninsured balances at June 30, 2020.

Investments consist of the following at June 30, 2020:

	Fair Value (Level 1)
Mutual funds	<u>\$ 306,892</u>

Investment income consist of the following at June 30, 2020:

Interest and dividends	\$ 11,602
Unrealized and realized gain	576
Investment management fees	<u>(3,045)</u>
	<u>\$ 9,133</u>

4. SCHOLARSHIPS

The Fund annually awards scholarships to graduating high school seniors, nominated by local chapters of the Fund, who maintain an established grade point average and plan to attend an accredited four-year institution. Scholarships will be awarded for up to four years, providing the award recipient satisfies the renewal requirements, which include continued enrollment at an accredited four-year institution, class registration, maintenance of the required grade point average, and are dependent on availability of funds.

Expenses for the future renewal scholarship awards will be recognized over the next four years, following the verification that the scholarship conditions have been met by the selected recipients. A portion of the Fund's fiscal year 2021 scholarships totaling \$19,500 have met the conditions to be recognized and have been recorded as a liability at June 30, 2020.

Expected future payments of renewal scholarship awards for selected recipients for the remaining term of the commitment is as follows at the year ended June 30, 2020:

Fiscal year 2021	\$ 75,000
Fiscal year 2022	57,000
Fiscal year 2023	39,000
Fiscal year 2024	<u>19,500</u>
	<u>\$ 190,500</u>

Audit Report

INDEPENDENT AUDITOR'S REPORT

5. NET ASSETS WITH DONOR RESTRICTIONS

Net assets with donor restrictions are available for the following at June 30, 2020:

Subject to passage of time	\$ 3,415
Subject to expenditure for specified purposes – scholarships	<u>117,473</u>
	<u>\$ 120,888</u>

Release from net assets with donor restrictions consisted of the following for the year ended June 30, 2020:

Satisfaction of purpose restrictions - scholarships	<u>\$ 66,000</u>
---	------------------

6. GFF BOARD DESIGNATED ENDOWMENT

In 2002, the Fund established an endowment fund, which is to be used for scholarships. The scholarship endowment funds are held in a brokerage account and a bank savings account styled "scholarship endowment fund" and are reported as investments and cash and cash equivalents in the accompanying financial statements. The Fund had the following GFF board designated endowment related activities for the year ended June 30, 2020:

GFF Board Designated endowment beginning of the year	\$ 303,190
Investment return	<u>9,133</u>
GFF Board Designated endowment end of the year	<u>\$ 312,323</u>

7. RELATED PARTIES

During the year ended June 30, 2020, the Fund was a national project recipient and received a donation of \$25,000 from The GF Inc., which is reported as contributions revenue and support in the accompanying financial statements.

During the year ended June 30, 2020, contributions from members of the Board totaled approximately 19% of the total contributions.

Audit Report

INDEPENDENT AUDITOR'S REPORT

8. SIGNIFICANT CONCENTRATIONS

For the year ended June 30, 2020, two donors contributed approximately 43% of total contributions.

9. RISKS, ECONOMIC OUTLOOK AND UNCERTAINTIES

The Fund depends heavily on contributions for its revenue. The ability of the donors to continue giving amounts comparable with prior years may be dependent, among other things, upon current and future overall economic conditions and the continued deductibility for income tax purposes of donations to the Fund. While management believes the Fund has the resources to continue its programs, its ability to do so and the extent to which it continues may be dependent on the above factors.

On March 11, 2020, the World Health Organization declared the novel strain of coronavirus ("COVID-19") a global pandemic and recommended containment and mitigation measures worldwide. The COVID-19 outbreak in the United States has caused business disruption through mandated and voluntary closings of business and shelter in place orders. In response, the U.S. Government enacted the Coronavirus Aid, Relief, and Economic Security ("CARES") Act, which includes significant provisions to provide relief and assistance to affected organizations.

COVID-19 had a significant impact on the fundraising efforts of the Fund during the fiscal year 2020. The major fundraiser for the Fund, a luncheon, and the annual meeting of the Fund takes place in May. During 2020, both events were viral due to COVID-19 thus impacting the usual opportunities to raise funds for scholarships through the sale of tickets to the luncheon. In addition, the Fund was also unable to conduct business in the usual manner due to COVID19. However, during this time period, the Fund did surpass traditional fundraising years.

While the disruption is currently expected to be temporary, there is considerable uncertainty around the direction of the closings and shelter in places orders and the ultimate impact of the CARES act and other governmental initiatives. It is at least reasonably possible that this matter will negatively impact the Fund. However, the financial impact and duration cannot be reasonably estimated at this time.

10. SUBSEQUENT EVENTS

In connection with the preparation of the financial statements, subsequent events have been evaluated by the Fund through November 10, 2020, which was the date the financial statements were available for issuance, and concluded that no disclosures are required.

Scholarship Committee

REPORT OF THE SCHOLARSHIP COMMITTEE



Dr. Fawn T. Robinson
Chair/Pittsburgh

Dear Girl Friends Fund Board and Girl Friends:

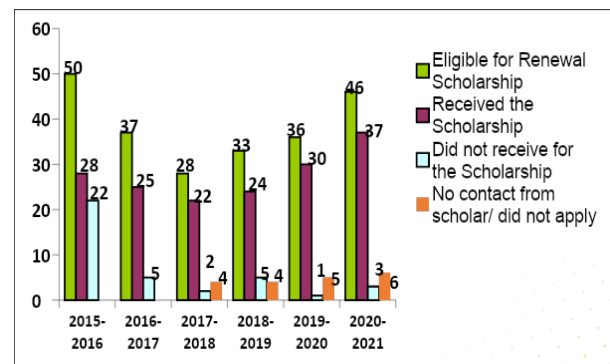
Girl Friends Fund Scholarship Committee was pleased to provide opportunities for Girlfriends across the country to support student success through the Girl Friends Fund, Inc.® The Scholarship Committee was tasked to organize and execute the **2020-2021 Scholarship Cycle and Scholars Renewal Process**. The Scholarship Committee Members are: GF Kathlynn D. Espy (Columbus), GF Sonya Goldsboro (Las Vegas), GF Annette Johnson (Albany), GF Jacqueline Randolph (New Haven), and GF Nedra Starling (Cleveland).

2020 Scholars Renewal Process

Each year, The Scholarship Committee reaches out to our scholars during the months of May-August to encourage the scholars to renew their scholarships. The scholars are eligible to renew the scholarship annually (up to four (4) years consecutively). The scholars must meet the renewal process criteria: (a) a minimum cumulative 3.0 GPA at the end of each academic year; (b) enrolled

full-time in an accredited four-year undergraduate institution; (c) completion the Returning Scholars Renewal Form; (d) official transcript; and (e) enrollment verification.

- 46 Past scholars were eligible to reapply for the scholarship
- 40 scholars reapplied for the scholarship
- **37 scholars met the renewal requirements and received the annual scholarship** which included eight (8) \$1,000 scholarships and two (2) scholars who received the GF Carolyn M. Carter Scholarship of \$3,000 to assist with cost of medical school applications.



The scholarship checks were distributed in September 2020 along with the 13 new 2020 Scholarships.

For the 2021-2022 renewal scholarship cycle, the Scholars will be emailed in May 2021 with instructions regarding the online renewal form and submission of an official transcript and enrollment verification by July 31st. The online renewal form will be available on the Girl Friends Fund website June 1st – 31st. Scholarship checks will be distributed in September 2021.

2021 New Scholars Cycle

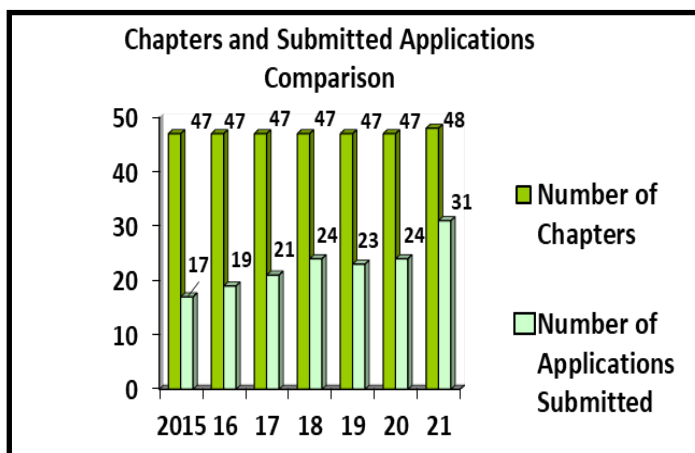
For the 2021 Scholarship Cycle, Chapter Presidents and Chapter Liaisons received the Scholarship Application through email in September 2020. The committee conducted a training session on January 31, 2021 with **8 Girlfriends attending the session**. With the *March 1st deadline*, the Scholarship Committee **received 31 applications** which was an increase of six (6) applications from last year.

Scholarship Committee

REPORT OF THE SCHOLARSHIP COMMITTEE

Report of Scholarship Committee Continue...

The GF Chapters made it difficult for the scholarship reviewers, by submitting an incredible group of young scholars with amazing academic achievements, leadership initiatives, and service commitments. The average scores of our past scholars include weighted QPA: 4.20+, SAT: 1360+, and ACT: 27.6+.



Thank you to the **11 Scholarship Reviewers** from seven Girlfriend chapters for reading, reviewing, and rating each application.

Dallas Chapter (GF Angela May)

Detroit Chapter (GF Suane Loomis)

Durham Chapter (GF Wanda Payne, GF Montresa McMillian, GF Joelle Duren)

Golden State Chapter (GF Denise LeNoir, GF Michele Davenport, GF Sidney Hunter)

Loudoun County Chapter (GF Nicole Baker Fulgham)

Minneapolis/St. Paul Chapter (GF Carolyn Suarez)

New Orleans Chapter (GF Nikki Epps Baham)

The scores from each reviewer were tailed and combined together. A final list of the scores was submitted to The Fund Board for review. The 2021 Scholars will be announced at the Conclave.

The following 31 chapters submitted a Scholarship Application for the 2021 Scholarship Cycle:

- | | | | |
|---------------|----------------------|------------------|----------------|
| 1. Albany | 9. Columbia | 17. New Haven | 25. Roanoke |
| 2. Atlanta | 10. Fairfield County | 18. New Jersey | 26. San Diego |
| 3. Baltimore | 11. Greenville | 19. New York | 27. Seattle |
| 4. Buffalo | 12. Houston | 20. Norfolk | 28. St. Louis |
| 5. California | 13. Las Vegas | 21. Orlando | 29. Toledo |
| 6. Chicago | 14. Louisville | 22. Philadelphia | 30. Trenton |
| 7. Cincinnati | 15. Memphis | 23. Pittsburgh | 31. Washington |
| 8. Cleveland | 16. Miami | 24. Potomac | |

Thank you for promoting the GFF scholarship, participating in the scholarship training, submitting scholarship applications, communicating with local school districts, cultivating our scholars, raising scholarship funds, and giving to The Girl Friends Fund, Inc.® both in service and in dollars. As a committee, we strongly encourage each chapter to continue to mentor their scholars and strengthen the relationships between the chapter, scholars, and the local high schools in effort to generate more scholarship applications. Your efforts are impacting the development of the next generation and your continuous lovely friendship is embracing and creating a community of great scholars!

Respectfully Submitted:

Fawn T. Robinson

Fawn T. Robinson

Chair of GFF Scholarship Committee



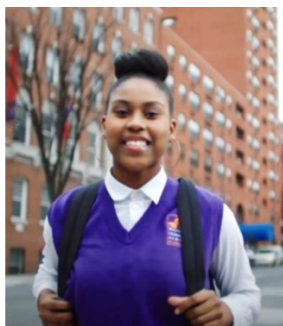
Scholarship Recipients

You did it!
Congratulations



Albany

Jordyn Hunter
Spelman College
Information Technology



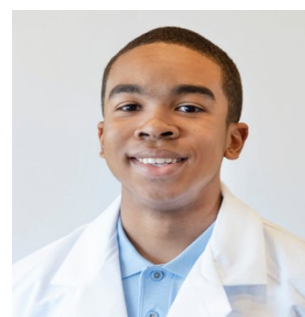
Baltimore

Cayla Moore
Alabama A&M University
Urban Planning



Chicago

Cynaiah Overstreet
University of Illinois
Computer Science and
Music Technology



Cleveland

Toby Byron Jones
John Carroll
University
Biology/Pre-Med



Columbia

Taylor Jacobs
Fayetteville State
Business and Marketing



Houston

Kelsey Cadien
Howard University
International Business/Pre-Law



Las Vegas

Symone Moore
Fisk University
Biology



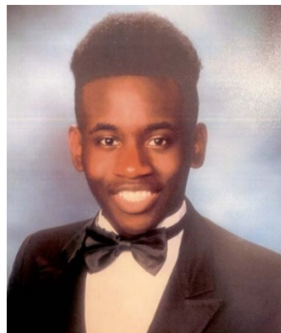
Memphis

Jadyn Cobb
Spellman College
Political Science

Scholarship Recipients

 **2021** class of

You did it!
Congratulations



Norfolk
Richard Meades
North Carolina A&T University
Pre-law



Orlando
Ricardo Joachim
Morehouse College
Engineering and Computer
Science



Potomac
Ashley Asante-Manu
Stanford University
Human Biology



Roanoke
London Paige
Virginia Polytechnic Institute
and State University
Biology

Scholars



Seattle
Maya García
Columbia University
Dual BA Degree Program
Law, Political Science



Trenton
Shelby Williams
Brown University
Political Science



Washington
Rnaisa Murphy
University of Pennsylvania
Business Administration



Pittsburgh
Alaina Peeler
Temple University
Biochemistry

alzheimer's
association®



Named Scholarships



GF Carolyn M. Carter Memorial Scholarship

The GF Carolyn M. Carter Memorial Scholarship was established in 2013 to support the undergraduate education of scholarly, high school graduates, particularly those with an interest in STEM. The \$1,500 award is renewable annually for up to four years. The award is also available to college juniors and/or seniors, in which case, \$3,000 may be awarded specifically to support their application to medical school. When awarded to juniors, it is renewable for one year. The scholarship was established by her daughter, GF Cindy Carter Cole.



Anita Peek Gilger, MD Trust

A 1941 graduate of The Johns Hopkins College of Medicine, Dr. Gilger, a Florida native, was a philanthropist and lover of the arts. She understood the challenges faced by low income students and ensured that they were among her beneficiaries. She named her friend, GF Helen Keith Wright (Cleveland), as one of her Trustees. Her Trust has been a significant donor to the GFF. In 2008, the Board of Directors established a scholarship in her name.



GF Juanita P. Humphrey

The GF Juanita P. Humphrey Scholarship was established in 2008 as the result of a donation from her estate. This was the largest one-time donation received by the GFF. GF Juanita was a Life Member of the New Jersey Chapter of The Girl Friends®, Inc. She was a selfless mentor to many who benefitted significantly from the many talents she acquired in the span of 96 years. This award is presented to a student who has outstanding accomplishments and involvement in community activities as well as academic achievement.



GF Gwendolyn G. Johnson

The GF Gwendolyn G. Johnson Scholarship was established in 2013 by immediate Past President of The GFF, GF Andrea L. Johnson, in honor of her mother. The one-time \$1,000 award is granted to a high school graduate who has been accepted to a four-year institution and meets the additional criteria consistent with the GFF General Scholarship.

Named Scholarships



GF Carole Temple Phillips

The GF Carole Temple Phillips Scholarship was established by the Board of Directors in 2010 as a onetime \$1,000 award to commemorate the legacy of GF Carole's stalwart commitment to The Fund as its Leader. As a demonstration of her ongoing commitment to The Fund and its mission, in 2014 GF Carole converted this to a recurring scholarship.



Pioneers of The Fund

The Pioneers of the Fund Scholarship was established by the GFF Board of Directors in April 2018 to be an enduring Scholarship of Distinction in honor of the 48 Pioneer members, initiating and supporting the Fund. The scholarships were initially awarded to students in 2019, meeting criteria consistent with GFF General Scholarship Awards.



GF Jacqueline C. Hrabowski

GF Jacqueline Hrabowski of the Baltimore Chapter is a philanthropist and advocate of mentoring young women interested especially in careers in public service and education. She established a named scholarship in 2019 to support two students at \$1,500 each annually for 4 years beginning in 2020. In addition, The Jacqueline Hrabowski Charitable Trust will contribute \$30,000 to support two students per year (\$3,000/yr.) for a 10-year period beginning in 2021.



Alzheimer's Association

The 2021 Alzheimer's Association Scholarship is a scholarship of distinction established to encourage scholars who are underrepresented in dementia science to contribute to addressing disparities in Alzheimer's and all other dementia.

alzheimer's 
association®

Esther C. Marioneaux

Endowment Fund

2021 CONTRIBUTIONS

GF Esther C. Marioneaux was a visionary who stood at the helm of The Girl Friends Fund, Inc.® (GFF) as President from 2000 to 2002.

She had the foresight to establish an endowment fund in 2002 with hopes that it would come to provide a constant revenue stream for GFF scholarships. She asked each Girl Friend to make a one-time donation of \$250. **GF Lynda Carroll**, GFF Past President Emeritus, followed in GF Esther's footsteps with lofty ideas of her own. Under her significant leadership, the fund was named in honor of GF Esther and a medallion was designed for presentation to each Girl Friend who made the requisite contribution. These became "members" of the GF Esther C. Marioneaux Endowment Fund (ECMF) and their names were inscribed on plaques displayed at The Girl Friends Fund Annual Meeting of the Membership. In response to her desire to honor donations to the ECMF beyond that initially requested, during her tenure as president, GF Carol Temple Phillips, Past President Emeritus, established the ECMF Certificate. Since 2002, membership in the ECMF has grown to over 400 individuals and 30 chapters of The Girl Friends®, Inc. In 2016, GF Cecilia B. Henderson, Past President Emeritus, presented first-time members medallions engraved with their name, date and GFF logo. After 16 years of donating at the \$250.00 level, the donation level was raised under President LaVerne N. Boyd's administration in 2018 to the current \$300 per member donation level to assist in growing the endowment. GF Esther passed away on March 19, 2019 in Huntersville, North Carolina. However, her legacy will continue and the ECMF presentation of awards remains a sacred celebration of GF Esther C. Marioneaux and is conducted during the GFF Annual Meeting of the Membership.

We welcome our newest members, thank our continuing contributors, and thank all for sharing in our vision.

Gwen Chattman (Atlanta)

Leslie Douglas-Churchwell (New Haven)

Rosemary Duffy (Columbus)

Elizabeth Duffy (Atlanta)

Kathlynn Duffy Espy (Columbus)

Marcia Elam*

Deborah Clark Hall (Richmond)*

Shirley J. Hughes (Minneapolis/St. Paul)

Lynn Johns (Potomac)*



Olivia Johnson (Columbus)*

Beth Jones (Atlanta)

Thelma Lovette Morris (Pittsburgh)

Carole Temple Phillips (Brooklyn)

Jacqueline Randolph (New Haven)

Tamara Turnley Robinson (Atlanta)

Marie Ray Scott (Las Vegas)

Victoria Vaughn (Memphis)*

Ann Walters-Pope (Miami)

* New Members

Chapters

Albany
Atlanta
Birmingham
Boston
Brooklyn*
Buffalo

Charlotte
Cincinnati
Cleveland
Columbia
Dallas
Detroit

Durham
Loudoun County
Louisville
Memphis
Miami
New Haven

New Jersey
New York
Newport News
Norfolk
Orlando
Philadelphia

Richmond
Roanoke
Seattle
St. Louis
Toledo
Washington

Esther C. Marioneaux

Endowment Fund

MEMBERS

Angela Adderley	Teresa A. Burr	Cecelia Epperson	Sheilah Shaw Horton
Deborah Marioneaux Allen	Evelyn Burton	Elizabeth Espy	Royalynne Hourihan
Barbara W. Alston	Marie Bush	Elizabeth N. Espy	Dolores B. Hudson
Jennifer D. Alston-Sako	Jean Clarkson Butler	Kathy Espy	Alice K. Houston
Janet C. Archer	Mildred Carrethers	Kathy D. Espy	Agatha Howard
Melissa Archer	Lynda Perry Carroll	Amy Espy-Smith	Wanda Coleman Hudson
Trudy Duncombe Archer	Carolyn M. Carter	Laura Espy-Bell	Shirley J. Hughes
Bert Asbury	Cynthia S. Carter	Lynne Espy-Williams	Casma Huie
Paquita Harris Attaway	Irene Carter	Hazelle Ferguson	Myrtle J. Humphrey
Gail Bailey	Jonita Carter	Scyla Murray Fernandez	Annie Hunter
Cynthia Ackron Baldwin	Gwen Chattman	Cheryl Finley	Carol Iglesias
Faustina Balthazar-Rucker	Gwendolyn L. Chattman	Hillarie Flood	Joan James
Lynne Rosewald Bannister	Mary Johnson Childs	Joan Sessoms Ford	Daisy Jeffries
Cecelia Powell Barnes	Doris Ford Chisolm	Margaret E. Foster Franklin	Alexine Johnson
Angela Bass	Kim Clark	Veronica Marshall Frazier	Audrey E. Jackson
Lillian McLean Beard	Miriam Clark	Shirley D. Freeman	Debbie C. Jackson
Patricia Beckett	Christy Clayton	Jodi Gallman	Emily Jackson
Mary D. Bell	Donna Coaxum	Margaret Gaines-Clark	Lynette Jackson
Roslyn Bell	Anita Cox Cobb	Kitty Gardiner	Valerie J. Branch Jackson
Robin Belle	Cindy Carter Cole	Connie Gee	Joan James
Betty Ann Belle	Barbara Bell Coleman	Mary Beaudoin Gibbons	Daisy Jeffries
Toni DesVerney Bennett	Barbara Bryce Coleman	Nanette Binford Gibson	Gygi Jennings
Michelle Bernard	Yolanda Coleman	Sonya Goldsboro	Lynn Johns
Nesta Bernard	Eleanor O'Banyoun Collins	Roslyn Thibodeaux Goodall	Andrea L. Johnson
Angela McAlister Berry	Michelle L. Collins	Marina Grant	Annette Johnson
Daryl Jerome Berry	B. Stephanie Commander	Tiffini Greene	Eddie Bernice Johnson
Angela Blayton	Forrestine "Tina" Coombs	Phoebe A. Haddon	Erica Nicole Johnson
Anita Bond	Cheryl Cooper	Maeble Hairston	Ernestine Norwood Johnson
Jacqueline Bontemps	Melva B. Copes	Dela Hale	Evelyn Johnson
Georgia Booker	Betty Corbitt	Joan Hall	Joan Arrington Johnson
Kelly Booker	Marcella Boyd Cox	Deborah Clark Hall	Mae Coleman Johnson
Pamela J. Boone	Stacey Crittenden	Bernadette Hamilton	Olivia Johnson
Dorothy Bostic	Brenda Culp	Lyn Hamlin	Tamara Harris Johnson
LaVerne Nichols Boyd	Tanya Curry	Janie Greenwood Harris	Carla D. Jones
Keree Brannen	Daryl Dance	Robin Leach Harris	Laren Jones
Elba "Tina" Brewer	Suzette Scarver Dave	Sharon Harris	Leslie Davis Jones
Betty Brinson	Joan Spence Davis	Joya Harrison	Michele W. Jones
Christina Brown Bristol	Sandra Days	Valerie Harrison	Rosalyn Jones
Shonda Brock	Mwendwa Denece	Lucille Brinson Harper	Shirley Jones
Cheryl Whiteman Brooks	Maria DeLongoria	Jacquelyn T. Hartley	Carolynne Lamar Jordan
Alma Brown	Pamela DeLongoria	Toni D. V. Hawkins-Bennett	Margaret H. Jordan
Alma Arrington Brown	Margaret Falkener DeLorme	Margaret Haynes	Anona Joseph
Antoinette Brown	Charlyne Dickerson	Stacy Haynes-Nelson	LeVerene Kelley
Barbara Brown	Shauna Ryder Diggs	Cecelia B. Henderson	Cynthia Kelly
Beulah Brown	Katherine Dockens	Charlotte Henderson	Elsie B. Kennedy
Brenda Brown	Daisy Douglas	Julia H. Henderson	LaVerne Dukes King
Carol N. Brown	Laura M. Douglas	Gwen Hicks	Kathleen C. A. Knight
Gloria Brown	Dorothy Dowdye	Jessica Hicks	Betty Kolb
J. Melva Brown	Muriel J. Drew	Elizabeth Hilton	Victoria Lacey
Joy San Walker	Sandra Driver	Imogen Hines	Debra Lamb
Brown Juanita	Rosemary Duffy	Harriet D. Hobson	Barbara M. Lanier
Washington Brown	Rosemary Duffy-Cooper	Alexandria Holloway	Carolyn Contee-Lassiter
Melva Brown	Nina Kenney Dunn	Yolanda Holmes	Dede Lea
Virginia Lewis Brown	Elaine Effort	Olga Holt	Jean Leach
Betty Bell Browne	Joan Eldridge	Joan Willis Holton	Melanie B. Leak
Carol Bryant	Marcia Elam	Ruby Homayssi	Kimberly Leslie-Patton
Vicki C. Bryant	Caroline Taylor Ellerson	Helen Hopson	Donna Lewis
Janice Burks	Deanne Hope Emerson	Deanna Ford Horton	Lynn Lewis

Esther C. Marioneaux

Endowment Fund

MEMBERS

Tina Lewis
Charisse Lillie
Eveline Lloyd
Rhea Lloyd
Edna Center Lofton
Vada Love
Jenny Lovell
Lori Helen Luis
Andre Mahone
Andrea T. Mahone
Teri Mallett
Stephanie J. Marioneaux
Esther Commander Marioneaux
Robyn Markoe
Taryn Markoe
Eva Martin
Anita Marioneaux Martinez
Barbara Mason
Lorraine Matthews
Betty D. McClain
Belma McClaskey
Sylvia McKinney
Juanita D. Melford
Yvonne Minor-Ragan
Terrelle Mitchell
Margaret Moore
Margaret Turman Moreland
LaShana B. Morris
Thelma Morris
Jessica L. Morse
Carolyn Lewis Mosby
Sandra L. Murdock
Maria Murphy
Maria D. Murphy
Pamela Elizabeth Murphy
Jo Foster Murray
Ellen Bentley Nash
Antoinette Johnson Neals
Carol Neyland
Lisa A. Nichols
Gladys E. Nichols
Lynell C. Nunn
Emmekunla Nylander
Phyllis Osbourne
Julie Othman
Faye D. Owens
Maxine Owens
Cheryl Parker
Gwendolyn Pearson
Sandra Pemberton
Deborah L. Perry
Ruth L. Pettis
Alona Phillips
Carole Temple Phillips

Elyse Phillips
Martha D. Phillips
Neil Foster Phillips
Aurelius H. Pitts
Marie Pogue
Heather Poladian
Mildred Pollard
Josephine Poindexter
Camille Porter
Marie E. Porter
Ersa Hines Poston
Joyce Price
Marion Proffitt
Dorothy Pryor
Shirley Williams Purvis
Deborah Pye
Eleanor Quash
Joyce Ford Quick
Jacqueline Randolph
Sharon Rencher
Barbara Rice
Carolyn Rice
Michelle Richardson
Joan Belle Ricks
Pamela Elizabeth Riddick
Vera Riddick
Ida Risbrook
Emma Roberts
Agnes G. Robinson
Alexis B. Robinson
Fawn Robinson
Irene O'Banyoun Robinson
Sylvia K. Robinson
Lynne Williamson Rogers
Marcia Boddy Rogue
Georgia Tallier Russan
Dorothea Moore Saunders
Leslie Joy Sawyer
Darlene Jeffries Schaller
Brenda Scott
Marie Ray Scott
Karen Selsey
Nancy Sergile
Ann Sewell
Joyce Sewell
E. Christine Ramsey Shack
Florence Sharpless
Juanita Shavers
Benita F. Shobe
Nancy Sergile
Jacquelyn Shropshire
Mirian Shropshire
Terilyn Shropshire
Karen F. Shirley

Anne Simmons
Gwen Simmons
Leslie Simmons
Sylvia A. Simmons
Barbara Simpkins
Rosalind Sims
Rose Singley
Marzetta F. Sinkler
Grace Hopson Smith
Racheal Norcom Smith
Marilyn M. Smith
Monica Smith
Shirley Powe Smith
Brenda Snead
Konneta Sparks
Virginia Scott Speller
Sharon A. Spencer
Cheryl Spicer-Bryant
Cecile Kennedy Springer
Donna Sprott
Cheryl Stanley
Nedra Starling
Susan Stephens
Clotilde Stenson
Lisa Stenson- Desamours
Cheryl L. Steward
Marilyn Strong
Carolyn Young Suarez
Myrna Symes
Ruthie Ida Tate
Kathy Taylor
Paula Whitfield Taylor
Phyllis Taylor
Betty Wimberly Thomas
D. Conrada Gill Thomas
Inez Thomas
Lorna Thomas
Lydia Thomas
Claudia Thompson
Jackie Threadgill
Deanna Shobe Tinsley
Shirley Tolentino
Cecile Tolliver
Winifred Veronica Torbet
Tamara Torbert
Vivian Tuck
Shuana K. Tucker Sims
Chaton T. Turner
Marita Turner
Oddis Calvin Turner
Barbara Robinson Utterback
Janice Valentine
Annette VanDevere

Victoria Vaughn
Emma S. Walker
Karen Hodges Walker
Shirley Walker
Valaida Walker
Ann E. Walters-Pope
C. Linda Waples
Barbara Weaver Ward
Ava F. Washington
Daryl Jordan Washington
Barbara Lord Watkins
Harriet Watson
Bessie H. S. Weaver
Jacquelyn Hartley White
Nola Lancaster Whiteman
Alease Williams
Doris Williams
Esther Williams
Frances Williams
Julia Williams
Marguerite L. Williams
Donna Wilson
Shelia Wilson
Sonali B. Wilson
Margaret Bush Wilson

Non-Members
J. Patrick Hudson
Marcia Elam

Bringing Dreams to Life

Scholarship Donations

GENERAL / NAMED



The Girl Friends Fund, Incorporated®

~ VISIONARY LEVEL (\$15,000 - \$24,999) ~

ANITA PEEK GILGER, MD TRUST

In honor of GF LaVerne N. Boyd, GFF Past President Emeritus

~ PATRON LEVEL (\$5,000 - \$9,999)~

CAROL TEMPLE PHILLIPS NAMED SCHOLARSHIP

James Metzger

ALZHEIMER'S ASSOCIATION NAMED SCHOLARSHIP

In honor of GF Roslyn Thibodeaux Goodall

~GENERAL SCHOLARSHIP FUND~

Creative Marketing Resources

In honor of GF Ann Walters-Pope, GFF President

Jacqueline Moore Bowles (Milwaukee)

In honor of GF Ann Walters-Pope, GFF President

~BENEFACITOR LEVEL (\$1000 - \$4,999)~

JACQUELINE HRABOWSKI NAMED SCHOLARSHIP

GF Jacqueline Hrabowski

GWENDOLYN JOHNSON NAMED SCHOLARSHIP

Cleveland Chapter

Scholarship Donations



GENERAL / NAMED

The Girl Friends Fund, Incorporated®

~BENEFACITOR LEVEL (\$1000 - \$4,999)~

Chapters

Columbus Chapter

In honor of GF LaVerne Dukes King, GF Past President

Louisville Chapter

Miami Chapter

In honor of GF Ann E. Walters-Pope, GFF President

New Haven Chapter

Orlando Chapter

Individual Members

Jacqueline Bontemps (Newport News)

Joyce Ford Quick (Buffalo)

In memory of Fannie Sparrow Ford: GF Joyce Ford Quick, daughter & GF Shayla A. Quick, granddaughter, Buffalo Chapter; GF Dr. Deanna Ford Horton, daughter, Potomac Chapter, GF Rolene O. Ford, daughter-in-law, GF Aricka O. Ford, GF Jameelee Sparrow Ford, granddaughters & BF James E. Ford, son, all of Albany. Jockular B. Ford M.D., son & Lin H. Ford, daughter-in-law, Loudonville, NY.

Frank L. Sims (Atlanta)

Lashell Vaughn (Memphis)

Scholarship Donations

GENERAL / NAMED



The Girl Friends Fund, Incorporated®

Non-members

Network For Good

GF Roslyn Thibodeaux Goodall

GF Lori Parker

Jason Turnley Robinson

In honor of GF Tamara Turnley Robinson

~PARTNER LEVEL (\$250 - \$999)~

CAROLYN CARTER NAMED SCHOLARSHIP

Alva Jean Crawford (Cincinnati)

GWENDOLYN JOHNSON NAMED SCHOLARSHIP

Cleveland Chapter

In honor of BF William Cunningham, husband of GF Patricia Turner Cunningham

~GENERAL SCHOLARSHIP FUND~

Chapters

Atlanta Chapter

In honor of GF Mirian C. Shropshire, Past GFF President

Buffalo Chapter

California Chapter

Cleveland Chapter

In honor of the Golden State Chapter

Columbia Chapter

In memory of GF Alice Carson Tisdale

Fairfield County Chapter

New Orleans Chapter

San Diego Chapter

Memphis Chapter

Newport News Chapter

St. Louis Chapter

Minneapolis Chapter

Pittsburgh Chapter

Washington Chapter

Scholarship Donations



GENERAL / NAMED

The Girl Friends Fund, Incorporated®

~PARTNER LEVEL (\$250 - \$999)~

Individual Members

Jacqueline Bontemps (Newport News)

Lynda Carroll (New Orleans)

Marcella Boyd Cox (Cleveland)

Paula Green (Golden State)

Jacqueline Hrabowski (Baltimore)

Annette Johnson (Albany)

Nina Bowman (Boston)

Donna Coaxum (Chicago)

Beverly Crawford (Miami)

Cecelia Henderson (Buffalo)

Jean Hurd (Boston)

Carla Jones & Janet Crosby (Miami)

In honor of GF Ann Walters-Pope, GFF President

Valerie Lewis

In honor of Mrs. Gloria H. Lewis

Ingrid Moore

Faye Owens (Louisville)

In memory of Ina Hall

Lynn Rogers (Columbia)

In memory of my father Lynwood F. Williamson, mother Yvonne Beaubian Williamson and brother, Wendell W. Williamson

Janet Schwartz (Orlando)

Sauna Tucker (New Haven)

Barbara Lord Watkins (Dallas)

Jacquelyn Shropshire (Las Vegas)

Vallery Twanugabo (Golden State)

Non-members

Richard A. Pope, Jr.

In honor of his lovely bride, GF Ann Walters Pope, GFF President

Scholarship Donations

GENERAL / NAMED



The Girl Friends Fund, Incorporated®

~FRIENDS LEVEL (\$25 - \$249)~

CAROLYN CARTER NAMED SCHOLARSHIP

Leslie Douglas-Churchwell (New Haven)

Thelma Lovette Morris (Pittsburgh)

JUANITA HUMPHRIES NAMED SCHOLARSHIP

Gwendolyn Barrington Jackson (New Jersey)

~GENERAL SCHOLARSHIP FUND~

Chapters

Columbus Chapter

In honor of the Golden State Chapter

Durham Chapter

Houston Chapter

Loudoun County Chapter

Pittsburgh Chapter

In honor of the Golden State Chapter

Individual Members

Angela Adderley (New Jersey)

Enola Aird (New Haven)

Sarah Akinfosile (San Diego)

Jennifer Alston (Roanoke)

In honor of Dr. Gloria Alston McNeil

Scholarship Donations



GENERAL / NAMED

The Girl Friends Fund, Incorporated®

Anne Allison (Atlanta)

In honor of GF Tracey Allison

Tracey Allison (California)

Janet Archer (Buffalo)

Peggy Barmore (Albany)

Teresa Bazemore (California)

Bettie Brinson (Brooklyn)

Shonda Brock (Buffalo)

Brenda Alston (Loudoun County)

Melissa Archer (Buffalo)

Vera Barnes (Las Vegas)

Genea DeShields Boykin (Columbia)

Christina Bristol (New Jersey)

Dorris Brown (Loudoun County)

Florence Simkins Brown (Miami)

In honor of GF Ann Walters-Pope, GFF President

Ritchie Manley Brown (Memphis)

Teresa Burr (Springfield)

Yolanda G Butler (Orlando)

Delores Diane Cadle (Buffalo)

Marla Burch (Roanoke)

Jean Butler (Orlando)

Marie Latham Bush (Toledo)

Mary C. Calloway (Roanoke)

Reba Cannaday (Roanoke)

In memory of GF Lavern Craighead Fuller-Prunty

Stephanie Cummings Carr (Loudoun County)

Gloria Chapman (New Haven)

Brenda Coakley (Baltimore)

Francine Cole (Loudoun County)

Joann Collins (Dallas)

Holly Cousins (St. Louis)

Judith Craven (Houston)

Nadine Clifford (Buffalo)

Anita Cox Cobbs (Durham)

Barbara Coleman (California)

Connie Cosby (Louisville)

Alisha Covington (California)

Rhonda Crockett (Columbus)

Darla Culmer (Miami)

In honor of GF Ann Walters-Pope, GFF President

Anita Dabney (Houston)

Kim Armstrong Davis (Pittsburgh)

Suzette Dave (Columbus)

Sandra Days (Potomac)

Scholarship Donations

GENERAL / NAMED

The Girl Friends Fund, Incorporated®



Mollie Deberry (Roanoke)

In memory of Mr. & Mrs. William T. DeBerry II

Shauna Diggs (Detroit)

Gail Ash Dotson (Miami)

In honor of GF Ann Walters-Pope, GFF President

Renia Dotson (Birmingham)

Tracy Duncan (Springfield)

Ericka Dunlap (Orlando)

Stephanie Durrett (Pittsburgh)

Elaine Effort (Pittsburgh)

Susan Ellis (Chicago)

Doris Ennis (Roanoke)

In memory of Hugh W. Ennis II

Michelle Mills Faison (Detroit)

Maritha Gay (Baltimore)

Roslyn Thibodeaux Goodall (Dallas)

Sonya Goldsboro (Las Vegas)

Leisha Gordon (Buffalo)

Patsy Graham (Miami)

In honor of GF Ann Walters-Pope, GFF President

Lynda Greene (Seattle)

Andrea Haley (Roanoke)

In memory of Carmen Goode

Bernadette Hamilton (Louisville)

Laura M Harris (Buffalo)

Thelma Haynesworth (Roanoke)

In memory of GF Hugh Ennis

Carolyn Hazelton (Miami)

In honor of GF Ann Walters-Pope, GFF President

Carrie Henley (California)

Pat Henry (Roanoke)

In memory of Irene White

Scholarship Donations



GENERAL / NAMED

The Girl Friends Fund, Incorporated®

Sandra Heyward (Newport News)

Cheryl Hitchcock (Baltimore)

Harriet Hobson (Philadelphia)

Elizabeth Hilton (Cleveland)

Kim Hitchens (Birmingham)

Alexandria Holloway (Miami)

In honor of GF Ann Walters-Pope, GFF President

Camelia Holmes (Birmingham)

Sheila Holmes (Seattle)

Tracey Nash Huntley (Dallas)

Carol Johnson (Memphis)

Lisa Renee Johnson (Golden State)

Inez Jones (Buffalo)

Adrienne Wells-Kestur (St. Louis)

Clara Lee (New Haven)

Carolyn Lowe (Philadelphia)

Jothany Machazire (Buffalo)

Deborah B Matthews (Philadelphia)

Lauren Ming (St. Louis)

Courtney Moore (California)

Kim Montgomery (Columbia)

Olivia Morris (Greenville)

Gail Myatt (New Haven)

Marilyn Holmes (California)

Yolanda Holmes (Washington)

Luwanda Jenkins (Baltimore)

Joan Johnson (Brooklyn)

Lydia Johnson (Richmond)

Marguerite Jones (Las Vegas)

Kathleen Knight (Las Vegas)

Tracey McCants Lewis (Pittsburgh)

Merry Macer (Baltimore)

Anita Marioneaux-Martinez (Fairfield)

Anita McCoy (Durham)

Terrelle Ballard Mitchell (California)

Emma Paulett Moore (New Haven)

Thelma Lovette Morris (Pittsburgh)

Yvette Mozie-Ross (Baltimore)

Antoinette Neals (New Jersey)

Lauren N'Namdi (Miami)

In honor of GF Ann Walters-Pope, GFF President

Lisa Nicholas (California)

Rhona Osborne (Buffalo)

Vonda Reed Owens (Columbus)

Rhonda Nolen (Las Vegas)

Allyson Owens (Baltimore)

Connie Page (Baltimore)

Scholarship Donations

GENERAL / NAMED

The Girl Friends Fund, Incorporated®



Carolyn Patterson (Roanoke)
In memory of Vencil Patterson Jr.

Leslie Patterson (Atlanta)

Stephanie Perez (Albany)

Rhonda W. Poindexter (Roanoke)

Estrella Powell (Cincinnati)

Yvonne Minor Ragan (Buffalo)

Mary Reed (Orlando)

Shanna Rieras (Birmingham)

Fawn Robinson (Pittsburgh)

E. Poullett Moore Rogers (N. Haven)

Karen Saah (Brooklyn)

Benita Shobe (New York)

Donna Wilson Pearson (Baltimore)

Diane Pierce (Durham)

Suzanne Kellar Porter (Louisville)

Shayla Quick (Buffalo)

Jacqueline Randolph (New Haven)

Gloria Riley (Cincinnati)

Alexis Robinson (New Orleans)

Tamara Turnley Robinson (Atlanta)

Saundra Rowell (Minneapolis/St. Paul)

Kimberly Savoy (Boston)

Carolyn Shovely (Roanoke)
In memory of Carmen Goode

Carol Sills (Trenton)

Raquel Skinner (Baltimore)

Cynthia Smith (Las Vegas)

Sharon Spencer (Birmingham)

Paula Taylor (Trenton)

Debra Thomas (Baltimore)

Valerie Bell Thomas (Baltimore)

Virginia Joy Simmons (California)

Brenda Smith (Albany)

Lisa Smith (California)

Selma Stewart (Newport News)

Toya Barnes-Teamer (New Orleans)

Inez Thomas (San Diego)

Mary Tillman (Miami)
In honor of GF Ann Walters-Pope, GFF President

Rhoda E Tipton (New Orleans)

Timothie Tinsley (Las Vegas)

Deanna Shobe Tinsley (Louisville)

Vivian Tuck (San Diego)

Scholarship Donations



GENERAL / NAMED

The Girl Friends Fund, Incorporated®

Shauna Tucker (New Haven)

Lisa Walker (Houston)

Barbara Warren (Columbus)

Eva Watts (Potomac)

Leslyn Wheless (Columbia)

Dawn Kimble-Vance (Baltimore)

LeVerne Wallace (Las Vegas)

Stasia Washington (California)

Hildred Webb (Houston)

Susan Whetstone (New Haven)

In honor of GF Michelle Turner

Bettyjean Wilkinson (Las Vegas)

Denita Willoughby (California)

Kendra Hamilton-Wynn (Dallas)

Elaine Williams (Houston)

Regina Wilson (Pittsburgh)

Non-Members

Ruby Hemingway Adams

In honor of GF Ann Walters-Pope, GFF President

William Allison

In honor of GF Tracey Allison

Campaign to Elect Jennifer Andreau

In honor of GF Ann Walters-Pope, GFF President

Michelle Arnold

David Artiz

Diana Bien-Aime

In honor of GF Ann Walters-Pope, GFF President

D'Bria Bradshaw

In honor of GF Ann Walters-Pope, GFF President

Teresa Brown

In honor of Richard & GF Ann Walters-Pope, GFF President

Scholarship Donations

GENERAL / NAMED

The Girl Friends Fund, Incorporated®

Non-Members (continued)



Cynthia Watkins Clanton

Bonita D. Cooper

In honor of Richard & GF Ann Walters-Pope, GFF President

Dianne Curry

Kelly Davis

In honor of GF Tracey Allison

Elizabeth Disbrow

Berneer Dunson

In honor of GF Tracey Allison

Carolyn Ellerson

Lynette Fahie

In honor of Richard & GF Ann Walters-Pope, GFF President

Savonne Ferguson

Cynthia Gary

In honor of GF Roslyn Thibodeaux Goodall

Gwen George

Nancy Glover

Carol Johnson Green

Cynthia Guidry

In honor of GF Roslyn Thibodeaux Goodall

Deah Harriott

Frenchy Bush Harris

In honor of her mother, GF Marie Latham Bush

Carla Horton

Susan Houck

In honor of Richard & GF Ann Walters-Pope, GFF President

Brenda Jones

Scholarship Donations



GENERAL / NAMED

The Girl Friends Fund, Incorporated®

Non-Members (continued)

Virginia Lamkin

Lynne Lightfoote

In honor of GF Tracey Allison

Nadine Marchand

Chandra Marshall-Henson

Nikki Martin

In honor of GF Tracey Allison

Linda Mayo-Perez

Kim McCray

In honor of GF Ann Walters-Pope, GFF President

Vicki Meek

Denise Mincey-Mills

In honor of Richard & GF Ann Walters-Pope, GFF President

Karmen Morgan

Paula Mott

In honor of GF Tracey Allison

Pamela Murphy

Adrienne Parkmond

Miles A. Pope

In honor of my mom, GF Ann Walters-Pope, GFF President

Jerry Reynolds

Curt Robinson

Kim Ryals

Shanaysha Sauls

Scholarship Donations

GENERAL / NAMED

The Girl Friends Fund, Incorporated®



Non-Members (continued)

Edlecia Sherrod

Silver Springs Chapter of The Links, Inc.

In honor of GF Shauna Tucker-Sims, Easter Area Director of The Links, Inc.

Andrew J. Smith III

In honor of GF Tracey Allison

Dale Smith

In honor of GF Roslyn Thibodeaux Goodall

Eula Smith

In honor of GF Roslyn Thibodeaux Goodall

Catla Soler

Cheryl Sueing-Jones

Linda McIntosh Todd

Tara D. Turner

In honor of GF Ann Walters-Pope, GFF President

Nicole Venable

In honor of GF Tracey Allison

Denese Waiters

In honor of GF Ann Walters-Pope, GFF President

Carmen Elly Wilkerson

Cora Williams

In honor of GF Roslyn Thibodeaux Goodall

Tracy Young

Scholarship Donations



GENERAL / NAMED

The Girl Friends Fund, Incorporated®

~ PIONEER CAMPAIGN ~

PIONEER LEVEL (\$1000 and above)

Louisville Chapter

In honor of Pioneer GF Belma Lunderman McClaskey

New Haven Chapter

In memory of Pioneer GF Agnes Timpson

New Jersey Chapter

*In honor of NJ Pioneers and
in memory of GF Shirley Tolentino, Juanita Humphrey, Rebecca Kingslow*

St. Louis Chapter

In honor of GF Georgia Rusan, Margaret Bush-Wilson, Carol Williams

Trenton Chapter

In honor of all Pioneers

MENTOR LEVEL (\$250 - \$499)

Yolanda Ruffin (New Jersey)

Eva Watts (Detroit)

EDUCATOR LEVEL (\$100 - \$249)

Individual Members

Deborah Clarke Hall (Richmond)

In honor of GF Dawn Cobb, In memory of Estrelle Clarke

Gloria S. Key (New Jersey)

Antoinette Neals (New Jersey)

Kimberly Parris (New Jersey)

Marjorie Rich (New Jersey)

Merele Watts (Detroit)

Scholarship Donations

GENERAL / NAMED

The Girl Friends Fund, Incorporated®



TUTORIAL LEVEL (\$25 - \$99)

Individual Members

Angela Adderley (New Jersey)

Priscilla Wynn Brown (Trenton)

Adrienne Collins (Trenton)

Deanna Emerson (Trenton)

Clyde Evan Group (Trenton)

Dorothy Harper (Trenton)

Lanella Hooper-Williams (Trenton)

Jewel Johnson (Trenton)

Stacy Reed Mevs (New Jersey)

Gwendolyn Pearson (Trenton)

Sandra Pemberton (Trenton)

Aurelius Pitts (New Jersey)

Ruby Sampson (New Jersey)

Jennfer Taylor-Smith (New Jersey)

Cheryl Spicer (Trenton)

Ana Tolentino (New Jersey)

Susan V. Van Buren (Trenton)

C. Linda Waples (Trenton)

Dawn Williamson (Trenton)

Simone Anderson (Trenton)

Dianne Clark (Trenton)

Delene Copeland (Trenton)

Fabienne Francois (Trenton)

Emilyn Hamlin (New Jersey)

Margaret Haynes (New Jersey)

Gwendolyn Barrington Jackson (New Jersey)

Yvette Kenner (Trenton)

C.L. Parker (Trenton)

Sandra Pemberton (Trenton)

Christine Fowler-Phillips (New Jersey)

Joanna Sanders (New Jersey)

Carol Sills (Trenton)

Chonita Spencer (New Jersey)

Chaterine Starghill (Trenton)

Donna Twisdale (New Jersey)

Adrina Walker (Trenton)

Yvette Williams (Trenton)

Margaret Williamson (Trenton)

Scholarship Donations



GENERAL / NAMED

The Girl Friends Fund, Incorporated®

~ SILENT AUCTION DONATIONS ~

\$1000 +

The Toledo Chapter

\$500 - \$999

The San Diego Chapter

\$200 - \$499

The Boston Chapter

The Brooklyn Chapter

The Buffalo Chapter

The Cleveland Chapter

The Columbus Chapter

The Miami Chapter

The New Haven Chapter

The New Jersey Chapter

The St. Louis Chapter

Jacqueline Bontemps (Newport News)

Marie Latham Bush (Toledo)

\$25 - \$199

The Las Vegas Chapter

Sonya Goldsboro (Las Vegas)

Yvette Mozie-Ross (Baltimore)

Cynthia Smith (Las Vegas)

Valerie A. Bell Thomas (Baltimore)

Scholarship Donations

GENERAL / NAMED

The Girl Friends Fund, Incorporated®



~ESTHER C. MARIGONEAUX DONATIONS~

\$250 - \$100

Betty Ann Bell

Nicole Bernard

Mary Child

Lisa Stenson Desamours

Robin Leach Harris

Annette Johnson

Daryl Jordan

Lori Luis

Carole Temple Phillips

Sharon Rencher

Clotilde Stenson

Nola Whiteman

T. Merele Williams

*Thank You For
Your Support*

Chapter Challenge

The **Chapter Challenge** is a fundraising incentive challenging **ALL CHAPTERS** of The Girl Friends®, Inc. to make a contribution to The Fund that meets one or more of the following criteria.

- ✓ Make a chapter donation of \$500 or more
- ✓ Become the chapter with the highest average per capita gift
- ✓ Give the amount equal to funding a Fund scholar for an entire year (\$1,500)
- ✓ Be the chapter that comes closest to 100 percent giving by all members

KUDOS to our top contributing chapters!!!

LOUISVILLE | NEW HAVEN | CLEVELAND | ST. LOUIS | COLUMBUS

Thank you to all of our participating Chapter and below are some that stood out!!!

Boston	Houston	New Orleans	Roanoke
Brooklyn	Memphis	Newport News	San Diego
Buffalo	Miami	Orlando	Trenton
California	Minneapolis/St. Paul	Philadelphia	Washington
Fairfield County	New Jersey	Pittsburgh	

MEMBER CHALLENGE

The **Member Challenge** asks every Girl Friend to step up and become a member of the Esther C. Marioneaux Endowment Fund (ECM). Girl Friends who make an individual first-time donation of \$300 or more to the ECM receive the Fund's Esther C. Marioneaux medallion.

We acknowledge and extend a heart-felt **Thank You** to the following Girl Friend for going above and beyond, making the **largest individual member contribution** that exceeded \$300!!!

GF Beth Jones (Atlanta Chapter)
GF Shirley J. Hughes (Minneapolis/ St. Paul Chapter)
GF Carole Temple Phillips (Brooklyn Chapter)

We congratulate and welcome the following **New Members** to the ECM – They stepped up to the **MEMBER CHALLENGE** to date...Thank you!!!

Marcia Elam
GF Deborah Clark Hall (Richmond Chapter)
GF Lynn Johns (Potomac Chapter)
GF Olivia Johnson (Columbus Chapter)
GF Victoria Vaughn (Memphis)

To all of the ECM continuing contributors, thank you for sharing in GF Esther's vision by growing the Esther C. Marioneaux Endowment and the ability to continually fund scholarships.

The Girl Friends Fund, Inc.[®]
presents the virtual

Eunice Shreeves Scholarship Luncheon

Pairings *with a* Purpose

May 27, 2021

12:30 p.m.

\$100
Per Person



Chef Richard Roberts

Executive Chef

catered for
The Obamas
The Clintons
Jennifer Lopez (J. Lo)
& Beyoncé



Malek Amrani

Sommelier

Winemaker & Founder of

THE VICE

Wines - Napa Valley

Included:

- S** Executive Chef
- C** Advanced Sommelier
- H** Personal Bottle of Wine
- O** Tasting Notes
- L** Hors d'oeuvres Menu
- A** Preparation details
- R** Shopping List
- S** 1 Raffle Ticket

Tickets must be purchased no later than May 1st to allow for your wine shipment

Purchase tickets online at <https://girlfriendsfund.org/2021luncheon/>



Eunice Shreeves Scholarship Luncheon



Gail Coles Johnson
Chair/Loudoun County



Tiffany Britton
Co-Chair/Dallas



Dear Girl Friends,

We are delighted to serve as Chair and Co-chair of the Eunice Shreeves Scholarship Luncheon Committee of the Girl Friends Fund, Inc.® We believe our theme for this year's virtual event "Pairing with a Purpose" truly exemplifies a desire to give back while we engage in a reconnecting with each other!

This will be our second virtual luncheon, but it promises to be a delightful experience! Following the example of GF Lori L. Parker who designed and delivered "Love to Fund a Future" virtually last year, we are busy created and exceptional experience as we continue to navigate this new normal of Zoom and virtual meetings.

Virtual does not mean flat nor boring. We will delight all 5 of your senses. You will see your beautiful past GFF Presidents as they participate in the Parade of Presidents. You will touch the ingredients used to prepare delicious hors d'oeuvres under the direction of celebrity executive chef Richard Roberts. You will smell and taste the aromas of an amazing wine selected by advanced sommelier Malek Amrani. You will also hear testimonials from a scholar so that we truly understand the impact of receiving a Girl Friends Fund Scholarship.

There will be raffles and a silent auction. But mostly there will be you enjoying an afternoon of fun with old and new friends in an intentional and purposeful way.

We are so grateful for the support and hard work of the 2021 Luncheon Committee, the Board of Directors under the leadership of the Fabulous GF Ann Walters-Pope. We are grateful for you donating and "Pairing with a Purpose" especially in these uncertain times.

Please consider making a donation through www.girlfriendsfund.org.

Thank you for your continued support!

Respectfully submitted,

GF Gail Coles Johnson

GF Gail Coles Johnson, Chair

Loudoun County Chapter

GF Tiffany Britton

GF Tiffany Britton, Co-Chair

Miami Chapter

The Girl Friends Fund, Incorporated®

~ EUNICE SHREEVES SCHOLARSHIP LUNCHEON SPONSORSHIPS ~

A World of Thanks



COCO B
PRODUCTIONS

**MAJOR
SPONSORS**

**WILLIAMS
CHICKEN®**

~ CHARDONNAY ~

\$1500

Tangee Gibson

Anonymous

~ ROSE ~

\$1250

*Jacqueline Bowles
Debra Hunter Johnson*

*Lynnette Crenshaw
Erika Salter*

Jacqueline Hrabowski

~ REISLING ~

\$500

Kobi Brinson

Mildred Carrethers

Shauna Ryder Diggs

Marnese Elder

Tracey Nash-Huntley

Jacqueline Randolph

Baylor Scott & White

Dr. Marvin Whitfield

Time to say

Thank You!

Fund Development



Ann E. Walters-Pope
Co-Chair/Miami



Roslyn Thibodeaux Goodall
Co-Chair/Dallas

Dear Girl Friends:

The Fund Development Committee creates opportunities that allow the members, and the community, to raise more funds to support scholarships. Through review of suggested ideas, the board chooses those which offer the best return on investment and which are thought to have the biggest appeal to the members.

Giving Tuesday was a month-long digital campaign comprised of carefully designed messaging with a call to action focused on the importance of continuing to

support scholarships even in the midst of a pandemic. Members, friends, family and corporate donors were encouraged to give \$10 or more and encourage 10 or more family and friends to also give \$10. We implemented peer-to-peer fundraising and text-to-donate by using our new Give Lively donation platform. Giving Tuesday raised over \$16,000...Thank you!

The **ScholarSip Campaign** was also a huge success. Through the support of Girl Friends from 28 Chapters, we exceeded our goal of selling 504 mugs raising over \$10,000. Some Chapters reordered the mugs, after members saw the actual product. Other members took "Mug Shots" during their virtual Chapter meetings. The limited edition, signature mugs will be quite a keepsake, for years to come.

We are excited to announce a first, a major partnership with the **Alzheimer's Association**. This relationship resulted in the establishment of a named scholarship, to be awarded in 2021. Additionally, representatives from the board of the Girl Friends Fund, Inc.® will serve as co-investigators on their R25 (Advancing Diversity in Aging Research) grant. The grant award would provide paid summer internships for GFF scholars who apply for and are selected for the program. This is the first time the Girl Friends Fund, Inc.® has partnered with an organization that has offered such benefits.

We sincerely thank you for your support of the Girl Friends Fund, Inc.® and invite you to send us your fundraising recommendations for consideration. As they say, it takes a village.

Girlfriendlly,

Girl Friend Ann E. Walters-Pope
Co-Chair

Girl Friend Roslyn Thibodeaux Goodall
Co-Chair



Scholar Sip

The Girl Friends Fund, Inc.®



alzheimer's 
association®



Special Projects Fundraising



Joyce Ford Quick
Chair/Buffalo



Cecelia B. Henderson
Co-Chair/Buffalo

The Girl Friends Fund, Inc.® Special Projects Fundraising Committee 2021 Annual Report

Dear Girl Friends,

It has been my pleasure to serve as Chair of the Special Projects Fundraising Committee with GF Cecelia B. Henderson as the Co-Chair for the past five years, under the leadership of the Girl Friends Fund, Inc.® (GFF) presidents Cecelia B. Henderson, LaVerne N. Boyd and Ann E. Walters-Pope. Since launching our bracelet fundraiser, Girl Friends have purchased five Different bracelets with our engraved "Bringing Dreams to Life" with the GFF symbol until they sold out at Conclave or soon after.

In 2019, at the New York Conclave, we added a sterling silver bracelet with the NY apple charm and the sterling silver GFF charm. In addition, a sterling silver pendant with a 30-inch adjustable chain commemorating the 30th Anniversary of Girl Friends Fund, Inc.® was added.

Last year, as a result of the pandemic, The Girl Friends®, Incorporated 85th Conclave in Philadelphia was Virtual. The GFF sold our 5th limited edition bracelet at the Virtual Eunice Shreeves Scholarship Luncheon. All of the crystal and rhinestone wrap bracelets sold out. This year we will be experiencing our 86th National Conclave again virtually. Therefore we only presented a series of sterling silver pieces of jewelry, a Liberty Bell charm, a charm bracelet with the GFF charm and a pendant with a 30-inch adjustable chain.

All proceeds from the jewelry sales will provide scholarships to graduating seniors in pursuit of higher education. With your support, the fundraiser makes it possible for GFF to continue "Bringing Dreams to Life".

The Girl Friends Fund, Inc.® continues to request donations to benefit scholarships. Our goal is to increase the number of scholarships available for students each year. Girl Friends thank you again for your continued generosity and support particularly during these unprecedented times for all of us.

Girl Friendly Always,

GF Joyce Ford Quick, Chair.

GF Cecelia B. Henderson, Co-Chair.

The Girl Friends Fund, Incorporated®

Spectacular Jewelry Event

CUSTOM GIRL FRIENDS FUND COLLECTION PIECES

PROCEEDS FUND SCHOLARSHIPS

MAKE YOUR SPECIAL PURCHASES

The GFF Spectacular jewelry event is happening now. We have a variety of limited pieces, ranging from timeless classics to modern one-of-a-kind combinations! Supplies are limited!! Visit our website under the jewelry tab. All jewelry will be shipped in time for our 2021 Virtual Conclave.

	PRICE
A. Sterling Silver Charm Bracelet	\$120.00
B. Liberty Bell Charm	\$ 35.00
C. Sterling Silver Pendant	\$120.00

*Prices include shipping and handling

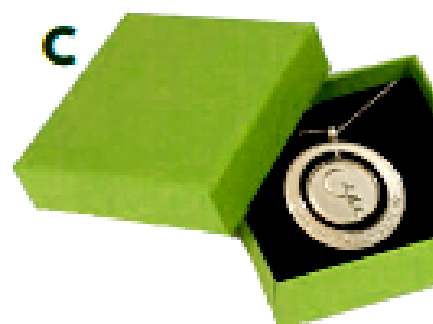
A



B



C



Silent Auction



Sonya Goldsboro
Chair/Las Vegas

Dear Girl Friends,

The final GFF Silent Auction Reminder Letter was distributed to chapter presidents and liaisons in April. The letter reminded GFs that a deadline of May 6, 2021, was created in order to ensure that donations made by that date could be represented in the report to members at the GFF, Inc. general meeting on May 27th.

GFs were reminded of the various ways that their donations could be made and that any money donated to the Silent Auction AFTER the May 6, 2021 deadline date would be thankfully and gratefully accepted.

At the request of the GFF president, a Silent Auction End of the Year report/letter was provided to her. It was noted that the amount of monetary donations made to the Silent Auction Fundraiser would be made known during the GFF meeting on May 27th.

As chair of the Silent Auction Committee, I would like to thank the members of this committee for their willingness to serve and to always provide their unvarnished critiques. I am so very grateful to them. The unwavering support and the critiques of the GFF president has been invaluable and always very much appreciated. GF Marie, in addition to her being a committee member, has acted promptly with every reminder distribution when directed by the president. I cannot thank her enough. The Financial Secretary and Treasurer are essential GFs to any fundraising process and GF Tamara and GF Lori Parker have been available and timely regarding any request made to them. A heartfelt thanks to all. Last, but not least, I thank GF Ann for the opportunity to serve.

Girl Friendly Always,

Sonya Goldsboro

Committee Members



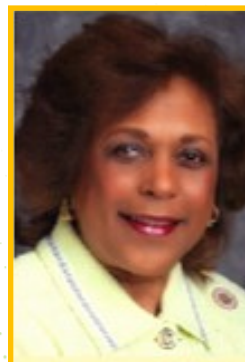
Marie Latham Bush



Jacqueline F. Bontemps



Marcella Boyd Cox



Cecelia B. Henderson*



Jacqueline Randolph

Nominating Committee

The nominating committee creates a slate of candidates to fill vacant offices on the Board of Directors. Membership is limited to Board Members.



BF Frank Sims, Chair
(Atlanta)



GF Ann E. Walters-Pope
(Miami)

Nominating Committee - Board of Directors

The nominating committee of the Board of Directors receives nominations and develops a slate of candidates to fill vacancies on the Board that are created as a result of the completion of terms of service. The Chair and the President discuss the needs of expertise on the Board and the recruitment of members who meet those needs is directed by the Committee.



GF Tamara Harris Johnson (Chair)
(Birmingham)



GF Marie Latham Bush
(Toledo)



GF Jacqueline Bontemps
(Newport News)



GF Kathlynn Espy
(Columbus)

Committee Chairs 2020-2021



GF Barbara Lord Watkins*

Audit Chair



GF Lori Parker

Budget Chair



GF Marie Latham Bush

Communications Chair



GF Gail Coles Johnson *

Eunice Shreeves Luncheon Chair



GF Tiffany Britton*

Eunice Shreeves Luncheon Co-Chair



GF Roslyn Thibodeaux Goodall

Chair Fund Development Co-Chair



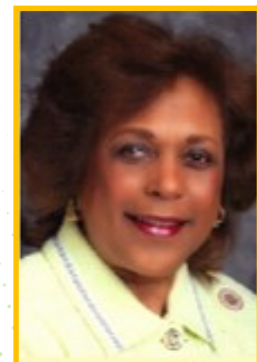
GF Ann E. Walters-Pope

Fund Development Co-Chair



GF Joyce Ford Quick

Fundraising Special Projects Chair



GF Cecelia B. Henderson*

Fundraising Special Projects Co-Chair

*Non-Board Member

Committee Chairs 2020-2021



GF Jacqueline Hrabowski
Investment Chair



GF Roslyn Thibodeaux Goodall
Hospitality Chair



GF Tracey Allison*
Legal Review Chair



GF Marie Latham Bush
Liaison & Chapter Relations



GF Tamara Harris Johnson*
Nominating – Board Positions Chair



BF Frank Sims
Nominating – Board Officers Chair



GF Fawn Robinson
Scholarship Chair



GF Sonya Goldsboro*
Silent Auction Chair



GF Fawn Robinson
Website Chair

*Non-Board Member

Directors 2020-2021



GF Jacqueline F. Bontemps



GF Jacqueline Hrabowski



GF Kathlynn D. Espy



GF Annette Johnson



GF Beth Jones



GF Joyce Ford Quick



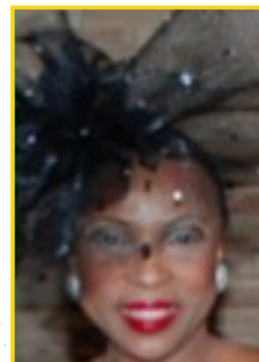
GF Jacqueline Randolph



GF Fawn Robinson



BF Frank Sims



GF Margaret Gaines Clark
EX-OFFICIO
President, The Girl Friends®, Inc.

Directors/Officers 2020-2021



GF Ann E. Walters-Pope
President



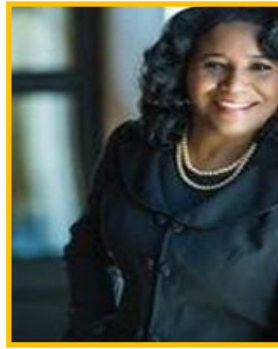
GF Marie Latham Bush
Vice President



GF Roslyn Thibodeaux Goodall
Secretary



GF Marcella Boyd Cox
Assistant Secretary



GF Lori Parker
Treasurer



GF Tamara Turnley-Robinson
Financial Secretary



GF Tracey Allison*
Parliamentarian



*Non-Board Member

2021 ANNUAL REPORT

The Girl Friends Fund, Inc.®

Registered Agent

10011 Silver Creek Road

Dallas, Texas 75243

Email: info@girlfriendsfund.org

Please visit our website: www.girlfriendsfund.org

