

# 2020 ANNUAL REPORT

The Girl Friends Fund, Incorporated®  
*Bringing Dreams to Life*



**Audit Report**  
July 1, 2018 - June 30, 2019

**Financial Report**  
July 1, 2019 - April 30, 2020

**Report of Contributions**  
July 1, 2019 - May 12, 2020



*Bringing Dreams to Life*



# The Girl Friends Fund, Incorporated®

## CONTENTS

### LETTERS AND REPORTS

President's Message	4
History of The Girl Friends Fund, Inc. ®	6
Past Presidents Emeriti	8
Vice President & Communications Chair	9
Secretary	10
Financial Secretary	11
Treasurer	13
Investment Report	15
2018-2019 Internal Audit Report	17

### SCHOLARSHIPS

Named Scholarships of Distinction	20
Scholarship Committee Report	22
2020 Scholarship Recipients	24
Esther C. Marioneaux Endowment Fund	26
General/Named Scholarship Donations	29

### MORE REPORTS AND INFORMATION

Chapter Challenge	36
Eunice Shreeves Scholarship Luncheon Report	37
Silent Auction Report	39
Fund Development/Fundraising Report	40
Special Projects Fundraising Report	42
Nominating Committee	44
Annual Meeting of the Membership Minutes	45
Committee Chairs	48
Directors 2019-2020	50
Officers 2019-2020	51

## President's Message



*Ann Walters-Pope*  
Miami

Dear Girl Friends,

As we continue to navigate this unprecedented COVID-19 pandemic, we, at The Girl Friends Fund, Inc.® sincerely hope that you and your loved ones are well and are taking every precaution to ensure your health and well-being. Despite the current situation, The Fund is thriving. I remain truly grateful, honored and excited to have been elected as the 14<sup>th</sup> National President of The Girl Friends Fund, Inc.® The journey to date has indeed been challenging and a growth process. I am therefore, delighted to share with you the Annual Report of The Girl Friends Fund, Inc.®

Together with our dedicated Board of Directors, we have established new systems for improving the overall operations of the organization. Our mission continues to focus on *Bringing Dreams to Life* as we provide scholarships and mentoring to high-achieving African-American students who face significant financial obstacles in their path toward a college education. With that in mind, we adopted the administrative theme - **Growing Future Funding**. While we are blessed to have so many Girl Friends who support The Fund, we also need to do better by casting a wider net and soliciting from corporations and other organizations to strengthen our funding capabilities.

The **Growing Future Funding** administration accomplished the following:

- Created a **GFF At-A-Glance** publication
- Developed a **Meeting Notification** that contains links to meeting materials (all in one place)
- Secured an online **GFF "Drop Box"** in order to archive, retain and store safely all GFF documents in a secure and easily accessible place.
- Closed the existing Merchant Services account to realize **significant cost savings** when processing credit card transactions and opened a **PayPal protocol** for accepting donations on-line.
- Launched **individual member email communications** with the 1700+ members  
Designed a **new newsletter**, *Bringing Dreams to Life*, that showcases GFF Scholars, supporting the need and importance for continued and sustainable philanthropy
- Updated the information on the **GFF website** and added a **"Pioneers of The Fund"** page to acknowledge our Pioneers.
- Facilitated preparation and timely filing of **Form 990**
- Provided the **2018-2019 Internal Audit Report** completed by the audit committee

In 2019, we saw record donations given, in celebration of our 30<sup>th</sup> Anniversary and recognition of our Pioneers. This year's donations are running second to 2019 but have surpassed our 2018 contributions, even in the midst of this COVID-19 crisis that has impacted many of us economically. This happened with the exclusion of this year's Eunice Shreeves Scholarship Luncheon proceeds and the signature jewelry sales, which are still pending...Thank you.



We are projected to provide \$64,000 to 47 eligible returning scholars that include the 10 first-time scholars awarded \$1,000 for four years last year. The GFF Board approved awarding 13 new scholars in 2020 for a 4-year period at \$1500 per year. This commitment of \$78,000 is funded in part by the 2019 National Project Award given to The Fund by The Girl Friends®, Inc. in the amount of \$25,000. It is through such continued support of Girl Friends, that we are able to renew and increase scholarship awards. Thank you.

As you know, this pandemic has forced us into social distancing. This new normal has resulted in the cancellation of the in-person 85<sup>th</sup> National Conclave and concurrently our GFF Annual Meeting. The Fund Bylaws allow Directors and Committee Chairs to attend all meetings virtually, except our Annual Meeting of the Membership. Thus, we have instituted the following to continue The Fund's operations.

- We sent out and received written consent for the informal action of voting on open and/or eligible Board Director positions electronically in lieu of not having an in-person Annual Meeting of the Membership.
- All members received a link to access the 2020 Annual Report containing all information that would have been reviewed at the Annual Meeting of the Membership.
- In place of the ESS Luncheon, we hosted a **"Love to Fund a Future"** virtual presentation to:
  - Share GFF information
  - Introduce and congratulate the 2020 Scholarship Recipients and nominating chapters
  - Feature some of our current Scholars
  - Conduct a raffle
  - Enjoy each other virtually
- Chapters and members were asked to consider a monetary donation in the name of the Silent Auction instead of providing an auction item. Donations to date have surpassed last year's silent auction proceeds!!
- Our 2020 Crystal Signature Bracelet is now available for purchase on-line. Hurry, supplies are limited!!

We have received tremendous support this year. As of May 12, 2020, we received \$74,601.33. More funds have been committed and are still being received!!

Girl Friends, we say **THANK YOU**, to you and to the many donors for your great generosity!!! To our Board of Directors, I extend a warm thank you for giving unselfishly of your time, talent and treasure. Please continue to be health-conscious and diligent, and please keep one another as well as those impacted by COVID-19 lifted in prayer during these difficult and uncertain days.

We remain prayerful, safe and encouraged together.

In Friendship,

*Ann E. Walters-Pope*

GF Ann E. Walters-Pope (Miami)  
National President, The Girl Friends Fund, Inc.®  
President's Message





## *The Girl Friends Fund, Inc.*

### *History*

The Girl Friends Fund, Inc (GFF, Inc.) was incorporated in Texas on February 22, 1988 and was recognized as a non-profit charitable organization by a five-year advance ruling from the Internal Revenue Service (IRS) on June 30, 1989, The Final Ruling of the IRS that the GFF, Inc. continue operation as a non-profit charitable organization was received from the IRS on December 1, 2008.

The GFF, Inc. was the brainchild of Girl Friends (GF/GFs) Ersa Posten and Helen Wright, past national presidents of the Girl Friends, Inc. (GF, Inc.) Prior to the 1987 Girl Friends Conclave, GF, Inc. national president GF Carolyn Wells appointed a three-member committee to explore the feasibility of securing a 501 C-3 public charity tax exemption from the IRS for the GF, Inc. Members of the committee were GFs Joan Sessoms Ford (Chairperson), Helen Wright (Advisory Board Chairperson) and Yvonne Gandy. At the committee's recommendation the delegates to the 1987 GF, Inc. Conclave approved the establishment of a separate charitable corporation to which tax-deductible contributions could be made. The mission of this corporation was financial assistance for college bound students who demonstrated financial need and distribution of proceeds from fundraising for other charitable purposes. This separate fund was named "The Girl Friends Fund" by vote of the Conclave delegates.

Initial Board members elected as required for incorporation in Texas, were GFs Rebecca Kingslow (Chairperson), Lucille Blondin and Joan Sessoms Ford. In turn they elected as initial officers GFs Konnetta P. Sparks, President and Yvonne Gandy, Secretary-Treasurer to serve until the first GFF, Inc. Board of Directors meeting. As Legal Counsel, Joan Sessoms Ford was charged with preparation of all documents necessary for incorporation and filing with the IRS for tax exempt charitable status. Five members of the Dallas GF, Inc. Chapter served as incorporators and signed the document for filing for incorporation on December 22, 1989.

The first meeting of the GFF, Inc. Board of Directors occurred at the Peabody Hotel in Memphis, Texas on May 27, 1989, and was convened by Interim President, Konnetta Sparks. Upon her election as the first president of the GFF, Inc., Chrystine Shack assumed the presidential role and proceeded with the meeting. Other initial officers were GFs Margaret Bush Wilson (Vice President), Cecile Springer (Secretary) and Lucille Blondin (Treasurer.) The first Directors were GFs Paquita Attaway, Lucille Blondin, Joan Sessoms Ford, Mae Johnson, Rebecca Kingslow, Irma Roy, Margaret Rucker, Chrystine Shack, Cecile Springer, Margaret Bush Wilson, and Konnetta P. Sparks (ex-officio.) A projected three- year budget needed for filing with the IRS was developed by Yvonne Gandy, Konnetta Sparks, Cecile Springer and Helen Wright, dated May 27, 1989.

Revised by-laws developed by Joan Sessoms Ford were reviewed and commented upon by the GFF, Inc. Board and the GF, Inc. membership and were approved on May 24, 1990 at the GFF, Inc. first annual meeting in Orlando, Florida and signed by Chrystine Shack (President), Joan Sessoms Ford (Legal Counsel), Cecile Springer (Secretary) and Margaret Bush Wilson (Vice President.)

The first fundraiser of the GFF, Inc. was a Girl Friends Fund Wheel. This effort was a raffle spearheaded by GF Paquita Attaway on May 27, 1992 at the GFF, Inc. Annual Meeting in Pittsburgh, PA. GFs Rebecca Kingslow and Lucille Blondin presented the framework of the GFF, Inc. scholarship program to the GFF, Inc. Board, and the first scholarship was awarded in 1995 under the guidance of GF Florence Sharpless as Scholarship Chairperson.

The GFF, Inc. Endowment Fund was established in 2002 during the administration of GF Esther C. Marioneaux for whom the Endowment Fund was later named during the presidency of GF Lynda Carroll. GF Lynda awarded the first Esther C. Marioneaux Endowment Fund medallions to each Girl Friend who made a one-time \$250 donation to the Endowment Fund. This practice has been continued by each subsequent president.

In addition to the General Scholarship Fund, through the beneficence of Girl Friends and/or their families, the GFF, Inc. has created five additional "named scholarships," called "Scholarships of Distinction" – the GF Carolyn M. Carter Memorial Scholarship, the Anita Peek Gilger, MD Trust, the GF Juanita P. Humphrey Scholarship, the GF Gwendolyn G. Johnson Scholarship, the GF Carole Temple Phillips Scholarship, the Pioneers of The Fund Scholarship, and the GF Jacqueline C. Hrabowski Scholarship – which are awarded yearly.

The presidents of the GFF, Inc. have all spearheaded outstanding activities. Girl Friends who have served as G.F.F. Inc president are: Konnetta P. Sparks, who led the establishment of the G.F.F, Inc.; Chrystine Shack 1989-1992; Helen K. Wright 1992-1995; Miriam Shropshire 1995-2000; Esther C. Marioneaux 2000-2002; Lynda P. Carroll, 2002-2005; Phoebe A. Haddon, 2005-2007; Carole T. Phillips, 2007-2010; Elaine Effort, 2010-2012; Andrea L. Johnson, 2012-2013; Cynthia Carter Cole 2013-2015; Cecelia B. Henderson 2015-2017; and LaVerne Nichols Boyd. Our current president is Ann E. Walters-Pope.

All members of The Girl Friends, Inc. are members of The Girl Friends Fund, Inc. We are one team with one mission. In recognition of the special importance of access to higher education for all and despite widespread economic instability and rising tuition costs we remain committed to eradicating the inequalities in educational opportunities in particular for African-American young women and young men that are low income and under-represented in universities and colleges across America. We have strength in numbers! We are a lifeline to our aspiring scholars and will remain so!

(We gratefully acknowledge the historical work of the 2015- 2017 History Committee: Co-Chairs GF Nina Jennings and GF Sheila J. Williams, the 2001 History of GF Cecile Springer, and the efforts of G.F. Lynne Bannister).

We also acknowledge GF Joan Sessoms Ford, Esq. for providing this history write-up and note that updates were added in May 2020.

# Past Presidents Emeriti



GF Konnetta Sparks  
(New York)  
1989 (Interim)



GF Chrystine Shack \*  
(Memphis)  
1989 – 1992



GF Helen Keith Wright  
(Cleveland)  
1992 – 1995



GF Mirian C. Shropshire  
(Atlanta)  
1995 - 2000



GF Esther C. Marioneaux \*  
(Charlotte)  
2000 – 2001



GF Lynda P. Carroll  
(New Orleans)  
2001-2005



GF Phoebe A. Haddon  
(Philadelphia)  
2005 – 2007



GF Carole Temple Phillips  
(Brooklyn)  
2007 – 2010



GF Elaine Effort  
(Pittsburgh)  
2010- 2012



GF Andrea L. Johnson  
(California)  
2012 – 2013



GF Cynthia Carter  
(Boston)  
2013 – 2015



GF Cecelia Henderson  
(Buffalo)  
2015 – 2017



GF LaVerne Nichols Boyd  
(Cleveland)  
2017-2019

\*Deceased

## *Vice President & Communications/ Chapter Liaison Chair*



*Marie Latham Bush*  
Toledo

Girl Friends,

It has been an honor and pleasure to serve as your Vice President. I sincerely thank you for electing me to this position and have every intention of proving to you that your vote of confidence in my ability was not in vain.

As with most Vice Presidents of organizations, I work closely with our President Ann Walters-Pope, and officers of The Fund. My main role is to assist the President. I am responsible for communications from The Girl Friends Fund, Inc.® (GFF) to The Girl Friends®, Inc. National Officers, Advisory Board, Chapter Presidents, Chapter GFF Liaisons, and the GFF Directors.

This program year, you received two (2) *Bringing Dreams to Life* newsletters. My role was to secure and organize the information prior to publication of the newsletters and having them emailed to you. The Fund wants to keep you informed of the scholars and what and how they are doing. Through the newsletter, we informed you how your generous support of the Eunice Shreeves Scholarship Luncheon, donations to the Silent Auction, purchase of jewelry, and chapter and individual donations make these scholarships possible. We also shared how Directors and members were making a difference in their communities.

I have worked closely with the nomination committee to provide a slate of names to be elected Directors for the coming years. Each of you received communications regarding this virtual election process.

The COVID-19 pandemic caused many changes that had to be adapted to create a means to continue the GFF's objective of "*Bringing Dreams to Life*" for our deserving scholars. This also required the GFF to make changes to our scholarship campaign, the Eunice Shreeves Scholarship Luncheon, Silent Auction and other fundraising activities. Serving on committees has heightened my understanding of the workings of the GFF. I appreciate the knowledge gained.

Serving as Vice President provides opportunities to learn more about The Girl Friends Fund, Inc.® and The Girl Friends®, Inc. I thank you.

Girl Friendly,

*Marie Latham Bush*

Marie Latham Bush  
Toledo Chapter



## Secretary



*Roslyn Thibodeaux Goodall*  
Dallas

Dear Girl Friends,

It has been my esteemed privilege to serve as board Secretary of The Girl Friends Fund, Inc.® I appreciate your electing me to this two-year position, in 2019. My responsibility is to accurately document minutes of all scheduled monthly board meetings, as well as any called meetings. I developed a spreadsheet on which I captured the attendance of members on the conference calls. The minutes were documented and forwarded to the President who included them in the monthly board packet that was emailed to the board members.

Minutes were recorded for the following board and called meetings:

September 10, 2019	February 11, 2020
October 8, 2019	March 10, 2020
November 12, 2019	April 5, 2020
December 10, 2019	April 14, 2020
January 14, 2020	May 12, 2020

As Chair of the Courtesy Committee, I mailed birthday and anniversary cards to members of the board. President Ann Walters-Pope had these cards designed expressly for our board with lovely drawings and friendship greetings.

When it was determined that The Girl Friends Fund, Inc.® would not have an in person, Annual Meeting of the Membership, all members were sent a Consent Form, which they were asked to sign and return to my attention. The purpose of the Consent Form was to authorize certain business actions by the board. It was my responsibility to receive and record responses from all members. In addition to recording those responses, I also responded to those Girl Friends who sent personal messages inquiring about my safety and well being. I was grateful for their concern.

This has been an exhilarating and educational time in my life as a Girl Friend. I have increased my knowledge of The Girl Friends Fund, Inc.® and have become acquainted with some very dedicated and devoted board members. Thank you, again, for your confidence in my ability to serve as board Secretary. I look forward to enhancing my contribution to the organization in the coming year.

With a Grateful Heart,

*Roslyn Thibodeaux Goodall*

Girl Friend Roslyn Thibodeaux Goodall  
Charter Member (1983) – Dallas Chapter

## *Financial Secretary*



*Tamara Turnley Robinson*  
Atlanta

May 21, 2020

Dear Girl Friends Fund Board and Girl Friends,

Thank you for the opportunity to serve our wonderful organization as Financial Secretary the past two years. My duties are to receive all monies directly from any source on behalf of the Girl Friends Fund, and to provide said monies for deposit to the Girl Friends Fund National Treasurer. The collaborative objective was to provide GF Beth Jones, National Treasurer, deposit transmittals of all funds received within 7-10 days of receipt. In addition, electronic donations have become an important stream of revenue, my duties are to log all donations received via all online sources.

My responsibilities also include providing a recording of all donations to the Girl Friends Fund Assistant Financial Secretary, Annette Johnson in order to ensure proper donor acknowledgements. In addition, I provide a monthly report to the GFF Board of Directors with a full accounting of all monies collected. I also provide a full accounting of revenue received during the year to the body in the GFF Annual Report.

A sincere and heartfelt THANK YOU for your generous support of The Fund, particularly in a year of a pandemic. We GFs continue to support our youth with their scholarly endeavors!

With warm Girl Friendly regards,

*Tamara Turnley Robinson*

Tamara Turnley Robinson  
Financial Secretary



# Financial Secretary Report

## Monies Received By Category, July 2019 - May 12, 2020

<b>GFF Signature Jewelry</b>	\$	<b>3,329.00</b>
<b>Esther Shreeves Scholarship Luncheon</b>	\$	<b>3,330.00</b>
<b>General Donation</b>	\$	<b>36,220.83</b>
<b>Esther Marioneaux Endowment Fund</b>	\$	<b>5,890.00</b>
<b>Pioneer Campaign</b>	\$	<b>900.00</b>
<b>Gwendolyn Johnson Scholarship</b>	\$	<b>2,500.00</b>
<b>Carolyn Carter Scholarship</b>	\$	<b>650.00</b>
<b>Carole Temple Phillips Scholarship</b>	\$	<b>250.00</b>
<b>Anita Peek Gilger Trust</b>	\$	<b>15,500.00</b>
<b>Eunice Shreeves Silent Auction</b>	\$	<b>5,825.00</b>
<b>Juanita Humphrey Scholarship</b>	\$	<b>175.00</b>
<b>Other</b>	\$	<b>31.50</b>
<b>TOTAL</b>	\$	<b>74,601.33</b>

GFF FINANCIAL SECRETARY REPORT  
2019 - 2020 SUMMARY - REVENUE RECEIVED  
Monies Received by Month by Category July 2019 - May 12, 2020

TOTAL	GFF Signature Jewelry	Esther Shreeves Scholarship Luncheon	General Donations	Esther C. Marioneaux Endowment Fund	Pioneer Campaign	Gwendolyn Johnson Scholarship	Carolyn Carter Scholarship	Carole T. Phillips Scholarship	Anita P. Gilger Trust	ES Silent Auction	Other	Juanita Humphrey Scholarship	TOTALS
July	\$ 124.00	\$ -	\$ 169.07	\$ -	\$ -	\$ -	\$ -	\$ -	\$ -	\$ -	\$ -	\$ -	\$ 293.07
August	\$ 558.00	\$ -	\$ -	\$ -	\$ 300.00	\$ -	\$ -	\$ -	\$ -	\$ 50.00	\$ -	\$ -	\$ 908.00
September	\$ 1,347.00	\$ -	\$ -	\$ -	\$ -	\$ -	\$ -	\$ -	\$ -	\$ -	\$ -	\$ -	\$ 1,347.00
October	\$ 390.00	\$ -	\$ 100.00	\$ -	\$ -	\$ -	\$ -	\$ -	\$ -	\$ -	\$ -	\$ -	\$ 490.00
November	\$ -	\$ -	\$ -	\$ -	\$ -	\$ -	\$ -	\$ -	\$ -	\$ -	\$ -	\$ -	\$ -
December	\$ 730.00	\$ -	\$ 2,501.00	\$ 300.00	\$ -	\$ -	\$ 200.00	\$ -	\$ 15,500.00	\$ -	\$ -	\$ -	\$ 19,231.00
January	\$ 120.00	\$ -	\$ 2,150.00	\$ -	\$ -	\$ -	\$ -	\$ -	\$ -	\$ -	\$ -	\$ -	\$ 2,270.00
February	\$ 60.00	\$ 1,530.00	\$ 100.00	\$ -	\$ -	\$ -	\$ -	\$ -	\$ -	\$ -	\$ -	\$ -	\$ 1,690.00
March	\$ -	\$ 1,530.00	\$ 4,570.00	\$ 500.00	\$ -	\$ -	\$ 300.00	\$ -	\$ -	\$ -	\$ 31.50	\$ -	\$ 6,931.50
April	\$ -	\$ 180.00	\$ 15,827.50	\$ 3,590.00	\$ 100.00	\$ 2,500.00	\$ 100.00	\$ 250.00	\$ -	\$ 2,110.00	\$ -	\$ -	\$ 24,657.50
May	\$ -	\$ 90.00	\$ 10,803.26	\$ 1,500.00	\$ 500.00	\$ -	\$ 50.00	\$ -	\$ -	\$ 3,665.00	\$ -	\$ 175.00	\$ 16,783.26
<b>TOTAL</b>	<b>\$ 3,329.00</b>	<b>\$ 3,330.00</b>	<b>\$ 36,220.83</b>	<b>\$ 5,890.00</b>	<b>\$ 900.00</b>	<b>\$ 2,500.00</b>	<b>\$ 650.00</b>	<b>\$ 250.00</b>	<b>\$ 15,500.00</b>	<b>\$ 5,825.00</b>	<b>\$ 31.50</b>	<b>\$ 175.00</b>	<b>\$ 74,601.33</b>

## Treasurer



*Beth M. Jones*  
Atlanta

Dear Girl Friends Fund Board and Girlfriends:

Thank you for allowing me to serve as your Treasurer this past year under the inspired leadership of Girl Friends Fund President Ann E. Walters-Pope. My duties and responsibilities have consisted of providing the Board of Directors and the membership with monthly reconciled financial status reports for all bank accounts and protecting the financial health of the assets of the Girl Friends Fund.

It has been a pleasure to work with Girl Friends Tamara Turnley-Robinson, Financial Secretary and Barbara Lord-Watkins, Audit Chair. We have worked collaboratively to ensure that the funds collected are being accurately recorded, invested and distributed in a timely manner. Transparency and accountability have guided our work to serve as stewards of the funds lovingly contributed to the Fund by our extraordinarily generous Girl Friends.

It has been a sincere honor to serve as an officer of the Girl Friends Fund and to be an active participant in execution of its philanthropic endeavors. In this day and time, our work in supporting the academic pursuits of our young scholars is more important than ever. I am humbled and grateful for this opportunity to be of service. I appreciate the warm support that the Executive Board has provided me during my tenure. The generosity of our Girl Friends and Boy Friends knows no bounds. The exemplary stewardship of these resources is making a huge difference.

With Kindest Girl Friendly Regards,

*Beth M. Jones*

Beth M. Jones  
Treasurer

# Treasurer's Report



The Girl Friends Fund, Inc.

2019-2020 Treasurer's Annual Report

Accounts	Checking Operating #1897	Checking Conclave #9764	Savings Committed #0753	Savings Restricted #4450	Savings Endowment #0458	Bank of America	Ameriprise Investments
Beginning Balance 07/01/2019	\$ 130,743.37	\$ 25,631.80	\$ 69,950.72	\$ 74,711.36	\$ 13,187.27	\$ 314,224.52	\$ 303,190.17
<b>Fiscal Year 2019-2020 Income</b>							
Monthly Income						FY2019-2020	FY2019-2020
July	\$ 0.15	\$ -	\$ 4.16	\$ 4.44	\$ 0.67	\$ 9.42	
August	\$ 7.00	\$ -	\$ 4.16	\$ 4.44	\$ 0.67	\$ 16.27	
September	\$ 810.07	\$ -	\$ 4.03	\$ 4.30	\$ 0.65	\$ 819.05	
October	\$ 997.00	\$ 723.96	\$ 4.16	\$ 4.44	\$ 0.67	\$ 1,730.23	
November	\$ 490.00	\$ -	\$ 4.03	\$ 4.30	\$ 0.65	\$ 498.98	
December	\$ 1,311.00	\$ -	\$ 4.16	\$ 15,504.71	\$ 0.67	\$ 16,820.54	
January	\$ 2,971.50	\$ -	\$ 3.92	\$ 1,605.07	\$ 0.63	\$ 4,581.12	
February*	\$ -	\$ -	\$ 5.53	\$ 4.99	\$ 0.63	\$ 11.15	
March*	\$ -	\$ -	\$ 9.82	\$ 5.08	\$ 0.67	\$ 15.57	
April*	\$ 18,287.50	\$ 96.35	\$ 9.53	\$ 2,894.94	\$ 0.65	\$ 21,288.97	
May							
June							
Total Income as of 4/30/2020	\$ 24,874.22	\$ 820.31	\$ 53.50	\$ 20,036.71	\$ 6.56	\$ 45,791.30	\$ 293,083.83
<b>Fiscal Year Expenses 2019-2020</b>							
Monthly Expenses	Operating	Conclave	Committed	Restricted	Endowment		
July	\$ 2,012.85	\$ -	\$ -	\$ -	\$ -	\$ 2,012.85	
August	\$ 10.47	\$ -	\$ -	\$ -	\$ -	\$ 10.47	
September	\$ 65,127.95	\$ -	\$ -	\$ -	\$ -	\$ 65,127.95	
October	\$ 151.66	\$ -	\$ -	\$ -	\$ -	\$ 151.66	
November	\$ 7,549.16	\$ -	\$ -	\$ -	\$ -	\$ 7,549.16	
December	\$ 9.16	\$ -	\$ -	\$ -	\$ -	\$ 9.16	
January	\$ 43.38	\$ -	\$ -	\$ -	\$ -	\$ 43.38	
February*	\$ -	\$ -	\$ -	\$ -	\$ -	\$ -	
March	\$ -	\$ -	\$ -	\$ -	\$ -	\$ -	
April*	\$ -	\$ -	\$ -	\$ -	\$ -	\$ -	
May							
June							
Total Expenses as of 04/30/2020	\$ 74,904.63	\$ -	\$ -	\$ -	\$ -	\$ 74,904.63	
<b>Board Approved Transfers</b>							
2/21/20	\$ 20,020.00	\$ (20,020.00)					
2/21/20	\$ 6,335.76	\$ (6,335.76)					
2/21/20	\$ (45,000.00)		\$ 45,000.00				
2/21/20	\$ (30,000.00)		\$ 30,000.00				
2/21/20	\$ 6,151.33			\$ (6,151.33)			
4/29/20	\$ -	\$ -	\$ 4,500.00	\$ (4,500.00)			
Board Approved Transfers	\$ (42,492.91)	\$ (26,355.76)	\$ 79,500.00	\$ (10,651.33)		\$ -	
Bank Ending Balances as of 04/30/2020	\$ 38,220.05	\$ 96.35	\$ 149,504.22	\$ 84,096.74	\$ 13,193.83	\$ 285,111.19	
Total Net Assets							
Bank of America & Ameriprise							\$ 578,195.02

Respectfully Submitted, GFF Beth M Jones



# Investment Committee Report

## REPORT OF THE INVESTMENT COMMITTEE



*Jacqueline Hrabowski*  
Chair/Baltimore

The Girl Friends Fund (GFF)'s Investments are professionally managed by Ameriprise Financial Services Incorporated (AFSI) in an Actively Diversified (AD) fund for Moderately Aggressive investors. The investment objective is to deliver risk-adjusted growth of capital to moderate aggressive investors. A few years ago, the GFF committee assessed the portfolios intent, future goals, risk tolerance, and time frame. We decided that with the advice of a manager with proven performance and expertise, we were willing to take more measured risk in order to achieve enhanced growth. Last year, our portfolio's moderately aggressive allocation was 67.5% equities, 25% fixed income 3.2% cash equivalents, 4% alternative investments, and .3% other assets and is now approximately 68% equities, 22.9% fixed income, 2.9% alternatives, 6.1% cash equivalents, and .1% other assets.

The GFF is invested in a fund of funds. Therefore, the portfolio is actively advised by an unaffiliated portfolio strategist, Wilshire Associates, Incorporated. (WAI) WAI advises AFSI in the best allocation for a portfolio with our profile. WAI has over 40 years of institutional experience. Its AD Portfolios leverage its institutional expertise informed by working with some of the nation's largest non-profit entities of endowments, foundations, and pension funds. WAI does not have discretionary authority nor control to purchase or sell assets or make other Investments. It merely provides portfolio allocation strategies and fund management.

AFSI is a professional money manager that manages the GFF funds in a diversified portfolio incurring reasonable risk in efforts to achieve incremental outperformance for long-term investors. It uses two key Solutions: 1) Asset Allocation and 2) Mutual Fund selection. Quarterly, the asset allocation is reviewed and revised as needed to maximize our potential returns given our risk tolerance. Mutual funds are selected based on the asset allocation targets and are monitor to ascertain that the fund is investing in the expected asset class and delivering competitive long-term performance. When a fund does not meet expectations, the fund is replaced. Last year, we paid fees of approximately 1% of the portfolio, totaling \$2,964.73. As of March 30<sup>th</sup>, 2020, the current GFF portfolio was valued at \$269,419.94, down 7.9% from last year's value of \$292,493.87. Throughout 2019, income from dividends, interest, and capital gains totaling \$13,744.79 were reinvested back into the portfolio.

Respectively Submitted,

*LaShana Broussard-Morris*

GF LaShana Broussard-Morris,  
Immediate Past Investment Committee Chairperson



LaShana Broussard-Morris  
Durham

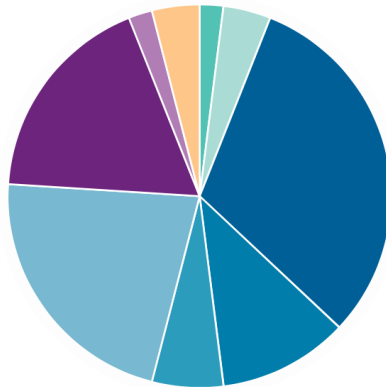


Roslyn Thibodeaux Goodall  
Dallas

# Investment Committee

## 2019 YEAR END PORTFOLIO ALLOCATION

### Asset Allocation



Asset Class	12/31/19	09/30/19	Qtr Change
Cash	2.00%	2.00%	0.00%
Cash Investments	4.00%	2.00%	2.00%
<b>Cash total</b>	<b>6.00%</b>	<b>4.00%</b>	<b>2.00%</b>
U.S. Large Cap	31.00%	32.00%	-1.00%
U.S. Mid Cap	11.00%	10.00%	1.00%
U.S. Small Cap	6.00%	4.00%	2.00%
Foreign Equity	22.00%	20.00%	2.00%
<b>Equity total</b>	<b>70.00%</b>	<b>66.00%</b>	<b>4.00%</b>
Core Fixed Income	18.00%	22.00%	-4.00%
Non-Core Fixed Income	2.00%	4.00%	-2.00%
<b>Fixed Income total</b>	<b>20.00%</b>	<b>26.00%</b>	<b>-6.00%</b>
Alternative Strategies	4.00%	4.00%	0.00%
<b>Alternatives total</b>	<b>4.00%</b>	<b>4.00%</b>	<b>0.00%</b>
<b>Total</b>	<b>100.00%</b>	<b>100.00%</b>	

### Investment Strategy

The Active Diversified Funds Moderate Aggressive portfolio is diversified across multiple asset classes and investment styles using active mutual funds and passive ETFs. Wilshire Funds Management, a division of Wilshire Associates, leverages the following key mechanisms in the management of these investment solutions:

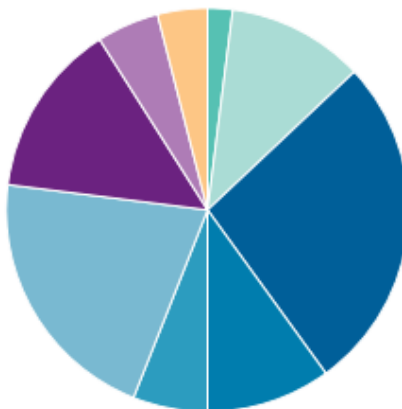
**Asset allocation targets** are reviewed on a quarterly basis in an effort to maximize the return potential relative to the given level of risk taken. Any allocation changes will be made during a quarterly reallocation process.

**Dynamic asset allocation** tilts are driven by near-term capital markets views made by Wilshire Funds Management. Senior members of the Wilshire Funds Management investment team meet formally at least quarterly basis to evaluate economic and market data and research to develop the their intermediate-term, forwarding-looking views.

**Investment selections** are monitored on an ongoing basis to ensure that each position is contributing the correct stylistic exposure, generating competitive long-term performance, and remaining consistent with its management process. In situations where a holding is not meeting their expectations, action will be taken to replace it.

## 2018 YEAR END PORTFOLIO ALLOCATION

### Asset Allocation



Asset Class	12/31/18	09/30/18	Qtr Change
Cash	2.00%	2.00%	0.00%
Cash Investments	11.00%	6.00%	5.00%
<b>Cash total</b>	<b>13.00%</b>	<b>8.00%</b>	<b>5.00%</b>
U.S. Large Cap	27.00%	32.00%	-5.00%
U.S. Mid Cap	10.00%	11.00%	-1.00%
U.S. Small Cap	6.00%	5.00%	1.00%
Foreign Equity	21.00%	21.00%	0.00%
<b>Equity total</b>	<b>64.00%</b>	<b>69.00%</b>	<b>-5.00%</b>
Core Fixed Income	14.00%	16.00%	-2.00%
Non-Core Fixed Income	5.00%	3.00%	2.00%
<b>Fixed Income total</b>	<b>19.00%</b>	<b>19.00%</b>	<b>0.00%</b>
Alternative Strategies	4.00%	4.00%	0.00%
<b>Alternatives total</b>	<b>4.00%</b>	<b>4.00%</b>	<b>0.00%</b>
<b>Total</b>	<b>100.00%</b>	<b>100.00%</b>	

Respectively Submitted, LaShana Broussard-Morris, Immediate Past Investment Committee Chairperson

# *Audit Committee*

## **REPORT OF INTERNAL AUDIT**

**July 1, 2018 – June 30, 2019**



*Barbara Lord Watkins*  
Chair/Dallas

The Girl Friends Fund, Inc.<sup>®</sup> (GFF) established in 1988, is a 501 (c) 3 nonprofit organization supported through generous tax-deductible donations from members of The Girl Friends<sup>®</sup>, Inc., corporate sponsors and the general public. All members of The Girl Friends<sup>®</sup>, Inc. are members of “The Fund.”

The Internal Audit Committee of The Girl Friends Funds, Inc.<sup>®</sup> (GFF, Inc.) conducted an internal audit of the financial records from July 1, 2018 through June 30, 2019 fiscal year.

The Girl Friends Fund, Inc.<sup>®</sup> provided 12 new scholarships for the 2018-2019 fiscal year. There were twenty-three (23) returning scholars. Two (2) of the twenty-three (23) returning scholars received \$3,000.00 each to assist with medical school applications. All other students received \$1,500.00 each. Additionally, ten (10) scholars received \$1,000 each for a total of \$10,000. The total number of funded scholars is forty-five (45). Sixty-five thousand and five hundred dollars (\$65,500.00) was provided to scholars for the school year 2018-2019.

The 990 Form was filed on time for 2018-2019. In addition, appropriate bond insurance was renewed in a timely manner.

The audit committee looked at both the cash income, expenditures and the deposits for the fiscal year as noted by examining the financial secretary’s and treasurer’s monthly reports as well as transfers to the treasurer for online receipts, signature jewelry, Eunice Shreeves Scholarship Luncheon, general donations, pioneer campaign, and silent auction. Also reviewed was income for the following: Gwendolyn Johnson, Carolyn Carter and Carole Temple Phillips Scholarship Funds. Additionally, the following were reviewed: Anita Peek Gilger Trust, Esther Marioneaux Endowment Fund and miscellaneous funds. The committee reviewed vouchers for disbursement of funds along with receipts for the vouchers, bank statements and investment documents.

It was determined that GFF, Inc. received and disbursed funds in accordance with the intended purpose of the fund.

We received and reviewed the Financial Secretary's reports along with each month's bank statement for all accounts and compared the entries with the canceled checks, vouchers and the Treasurer's reports. The GFF, Inc. has five (5) accounts with Bank of America. They are: Committed, Operating, Endowment, Restricted and Credit accounts. Each of these accounts were examined for deposits, appropriate withdrawals and bank reconciliation. Revenue for the fiscal year (2018-2019) was \$203,190.75. Expenditures for the same period was \$153,069.24. The beginning balance for the fiscal year (July 1, 2018) for all accounts with Bank of America was \$265,088.00. The ending balance for the year (June 30, 2019) in all accounts was \$314,224.52. This included the variance of \$8,520.22 that was acknowledged in credit card charges. The beginning balance for the Investment Fund with Ameriprise Financial in July 1, 2018 was \$287,346.80 and the ending balance in June 30, 2019 was \$303,190.17. The portfolio's asset allocation consists of 67.8% equities, 20.7% fixed income, 7.4% cash equivalents, 3.9% alternatives and other assets, 0.2%.

The major fundraiser for the 2018-2019 year was the Pioneers Campaign. The profit realized from this event was \$44,708.67. The Eunice Shreeves Scholarship Luncheon had a profit of \$9,537.71; the Silent Auction had a profit of \$4,926.96; and, the sale of bracelets provided additional income in the amount of \$4,018.11. Income from corporate and other donations accounted for over \$92,000.00 in revenue.

## **SUGGESTIONS AND FINDINGS**

This is the second year that "The Fund" has had an Assistant Treasurer. This position along with the use of appropriate software for the organization has enhanced GFF, Inc.'s ability to be more efficient in reporting, documenting and storage for all financial information related to the organization. It is recommended that yearly financial records be provided on a separate drive to incoming financial officers.

We recommend continuous oversight to ensure that vouchers are completed prior to the writing of checks and that checks have more than one signature prior to disbursement. There was an oversight with overpayment of \$36 to a musician at the luncheon; however, it was noted that vouchers/vouchers notation for all checks were present. It is further recommended that the Document Retention; Finance Committee; Investment, Management and Spending; and Audit policies be updated for future reference.

The committee is grateful to the Immediate Past President LaVerne Boyd, President Ann E. Walters-Pope, Financial Secretary Tamara Turnley-Robinson, Treasurer Beth Jones and Scholarship Chair, Fawn Robinson for their tremendous cooperation and support in helping us to fulfill our responsibility to the organization.

### **Committee Members**

GF Kathlynnne Duffy Espy

GF Roslyn Thibodeaux Goodall

GF Casma Huie

GF Jacqueline Randolph

GF Barbara Lord Watkins, Chairman

Submitted April 14, 2020



Kathlynnne Duffy Espy  
Columbus



Roslyn Thibodeaux Goodall  
Dallas



Casma Huie  
Washington



Jacqueline Randolph  
New Haven



# Named Scholarships

## SCHOLARSHIPS OF DISTINCTION



### GF Carolyn M. Carter Memorial Scholarship

The GF Carolyn M. Carter Memorial Scholarship was established in 2013 to support the undergraduate education of scholarly, high school graduates, particularly those with an interest in STEM. The \$1,500 award is renewable annually for up to four years. The award is also available to college juniors and/or seniors, in which case, \$3,000 may be awarded specifically to support their application to medical school. When awarded to juniors, it is renewable for one year. The scholarship was established by her daughter, GF Cindy Carter Cole.



### Anita Peek Gilger, MD Trust

A 1941 graduate of The Johns Hopkins College of Medicine, Dr. Gilger, a Florida native, was a philanthropist and lover of the arts. She understood the challenges faced by low income students and ensured that they were among her beneficiaries. She named her friend, GF Helen Keith Wright (Cleveland), as one of her Trustees. Her Trust has been a significant donor to the GFF. In 2008, the Board of Directors established a scholarship in her name.



### GF Juanita P. Humphrey

The GF Juanita P. Humphrey Scholarship was established in 2008 as the result of a donation from her estate. This was the largest one-time donation received by the GFF. GF Juanita was a Life Member of the New Jersey Chapter of The Girl Friends®, Inc. She was a selfless mentor to many who benefitted significantly from the many talents she acquired in the span of 96 years.

This award is presented to a student who has outstanding accomplishments and involvement in community activities as well as academic achievement.



### GF Gwendolyn G. Johnson

The GF Gwendolyn G. Johnson Scholarship was established in 2013 by immediate Past President of The GFF, GF Andrea L. Johnson, in honor of her mother. The one- time \$1,000 award is granted to a high school graduate who has been accepted to a four-year institution and meets the additional criteria consistent with the GFF General Scholarship.

# *Named Scholarships*

## SCHOLARSHIPS OF DISTINCTION



### **GF Carole Temple Phillips**

The GF Carole Temple Phillips Scholarship was established by the Board of Directors in 2010 as a one-time \$1,000 award to commemorate the legacy of GF Carole's stalwart commitment to The Fund as its Leader. As a demonstration of her ongoing commitment to The Fund and its mission, in 2014 GF Carole converted this to a recurring scholarship.



### **Pioneers of The Fund**

The Pioneers of the Fund Scholarship was established by the GFF Board of Directors in April 2018 to be an enduring Scholarship of Distinction in honor of the 48 Pioneer members, initiating and supporting the Fund. The scholarships were initially awarded to students in 2019, meeting criteria consistent with GFF General Scholarship Awards.



### **GF Jacqueline C. Hrabowski**

GF Jacqueline Hrabowski of the Baltimore Chapter is a philanthropist and advocate of mentoring young women interested especially in careers in public service and education. She established a named scholarship in 2019 to support two students at \$1,500 each annually for 4 years beginning in 2020. In addition, The Jacqueline Hrabowski Charitable Trust will contribute \$30,000 to support two students per year (\$3,000/yr.) for a 10-year period beginning in 2021.

**The Girl Friends Fund, Incorporated®**  
*Bringing Dreams to Life*

# Scholarship Committee

## REPORT OF THE SCHOLARSHIP COMMITTEE



*Dr. Fawn T. Robinson*  
Chair/Pittsburgh

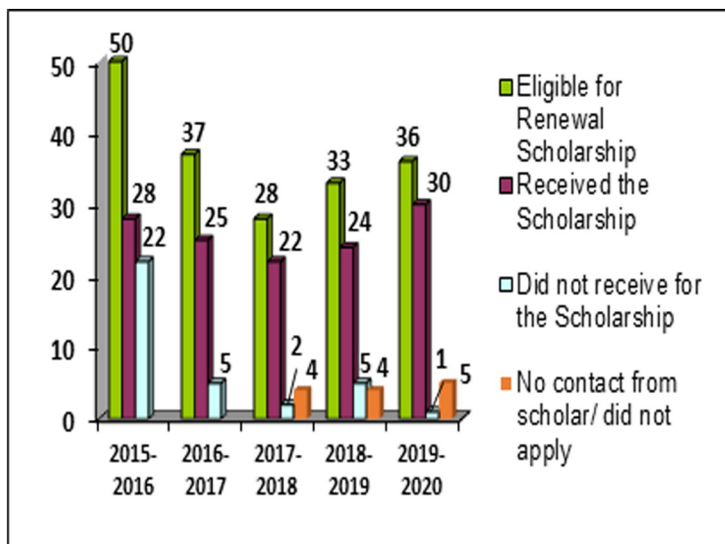
### Dear Girl Friends Fund Board and Girl Friends:

Girl Friends Fund Scholarship Committee was pleased to provide opportunities for Girlfriends across the country to support student success through the Girl Friend Fund, Inc. The Scholarship Committee was tasked to organize and execute the **2019-2020 Scholarship Cycle and Scholars Renewal Process**. The 2019-2020 Scholarship committee members are: GF Marcella Cox (Cleveland), GF Kathlynn D. Espy (Columbus), GF Sonya Goldsboro (Las Vegas), GF Jacqueline C. Hrabowski (Baltimore), GF Annette Johnson (Albany), GF Marie Latham Bush (Toledo), GF Lori Parker (Dallas), GF Jacqueline Randolph (New Haven), GF Nedra Starling (Cleveland), and GF Ann Walters-Pope (Miami).

### 2019-2020 Scholars Renewal Process

Each year, The Scholarship Committee reaches out to our scholars during the months of May-August to encourage the scholars to renew their scholarships.

The scholars are eligible to renew the scholarship annually (up to four (4) years consecutively). The scholars must meet the renewal process criteria: (a) a minimum cumulative 3.0 GPA at the end of each academic year; (b) enrolled full-time in an accredited four-year undergraduate institution; (c) completion the Returning Scholars Renewal Form; (d) official transcript; and (e) enrollment verification.



36 Past scholars were eligible to reapply for the scholarship

31 scholars reapplied for the scholarship

**30 scholars meet the renewal requirements and received the annual scholarship** which included two (2) scholars who received the GF Carolyn M. Carter Scholarship of \$3,000 to assist with cost of medical school applications.

The scholarship checks were distributed in September 2019 along with the 23 new 2019 Scholarships. For the 2020-2021 renewal scholarship cycle, the Scholars will be emailed in May 2020 with instructions regarding the online renewal form and submission of an official transcript and enrollment verification by July 31st. The online renewal form will be available on the Girl Friends

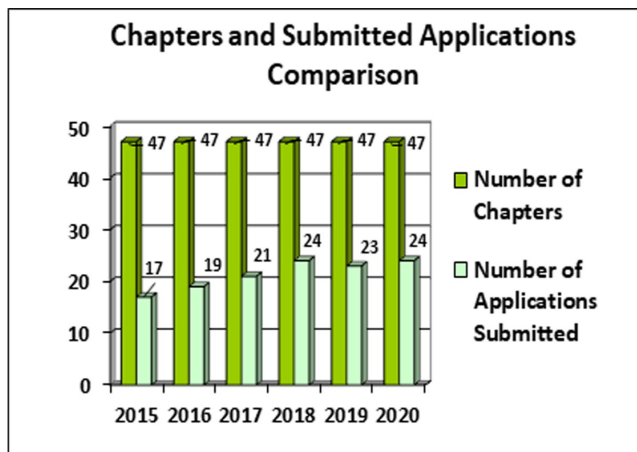
Fund website July 1<sup>st</sup> – 31st. Scholarship checks will be distributed in September 2020.

### 2020 New Scholars Cycle

For the 2020 Scholarship Cycle, Chapter Presidents and Chapter Liaisons received the Scholarship Application through email in October 2019. The committee conducted a training session on February 9, 2020 with **22 Girlfriends attending the session**. With the *March 1<sup>st</sup>* deadline, the Scholarship Committee **received 24 applications** which was an increase of one (1) application from last year.

# Scholarship Committee

The GF Chapters made it difficult for the scholarship reviewers, by submitting an incredible group of young scholars with amazing academic achievements, leadership initiatives, and service commitments. The average scores of our past scholars include weighted QPA: 4.20+, SAT: 1360+, and ACT: 27.6+. Thank you to the **six Scholarship Reviewers**, GF Scyla Murray Baielli (Chicago), GF Gail Finley (Washington), Alberta Hinds (Nashville), GF Casma Huie (Potomac), GF Annette Johnson (Albany), and GF Leslie Patterson (Atlanta) for reading, reviewing, and rating each application. The scores from each reviewer were tailed and combined together. A final list of the scores was submitted to The Fund Board for review.



The following **24 chapters** submitted a Scholarship Application for the **2020 Scholarship Cycle**:

Baltimore Chapter	Durham Chapter	New Jersey Chapter
Boston Chapter	Fairfield County Chapter	Pittsburgh Chapter
Buffalo Chapter	Las Vegas Chapter	Roanoke Chapter
California Chapter	Loudoun County Chapter	San Diego Chapter
Cincinnati Chapter	Louisville Chapter	Seattle Chapter
Cleveland Chapter	Miami Chapter	Springfield Chapter
Columbia Chapter	Minneapolis/St. Paul Chapter	St. Louis Chapter
Columbus Chapter	New Haven Chapter	Toledo Chapter

The 2020 Scholars will be announced at the 2020 Conclave. As a committee, we strongly encourage each chapter to continue to mentor their scholars and strengthen the relationships between the chapter, scholars, and the local high schools in effort to generate more scholarship applications.

Thank you for promoting the GFF scholarship, participating in the scholarship training, submitting scholarship applications, communicating with local school districts, cultivating our scholars, raising scholarship funds, and giving to The Girl Friends Fund, Inc. both in service and in dollars. Your efforts are impacting the development of the next generation and your continuous lovely friendship is embracing and creating a community of great scholars!

Respectfully Submitted:

**Fawn T. Robinson**

Fawn T Robinson  
Chair of GFF Scholarship Committee





## 2020 Scholarship Recipients



*Miami Chapter*

**Aaliyah Buissereth**

Howard University  
Criminology/Political Science



*Durham Chapter*

**Aissa Dearing**

Howard University  
Climate Science



*St. Louis Chapter*

**Lailah Hall**

North Carolina A&T State  
University  
Agricultural Business



*Fairfield County Chapter*

**Danielle Johnson**

Fordham University  
Liberal Arts

# Congratulations!



*Boston Chapter*

**Asia Kelly**

Howard University  
Veterinarian



*Baltimore Chapter*

**Magdalene Lindsay**

University of Maryland  
Engineering



*Pittsburgh Chapter*

**Carmelione Majewski**

University of Dayton  
Psychology





## 2020 Scholarship Recipients



*Las Vegas Chapter*  
**Rhealyn Manning**  
Howard University  
Biomedical Science



*Roanoke Chapter*  
**Elyse McFalls**  
North Carolina Central University  
Computational and Data Analytics



*Seattle Chapter*  
**Sloane Miller**  
North Carolina AT&T  
Computer Science

# Congratulations!



*Cleveland Chapter*  
**Naya Nicole Scipio**  
Spelman College  
Pre-Med



*Buffalo Chapter*  
**Jessica Shaw**  
SUNY at Buffalo  
Pharmacology and Toxicology



*San Diego Chapter*  
**Brandon Wells**  
Stanford University  
Aerospace Engineering

# Esther C. Marioneaux

## Endowment Fund

### 2020 CONTRIBUTIONS

GF Esther C. Marioneaux was a visionary who stood at the helm of The Girl Friends Fund, Inc.® (GFF) as President from 2000 to 2002.

She had the foresight to establish an endowment fund in 2002 with hopes that it would come to provide a constant revenue stream for GFF scholarships. She asked each Girl Friend to make a one-time donation of \$250. **GF Lynda Carol**, GFF Past President Emeritus, followed in GF Esther's footsteps with lofty ideas of her own. Under her significant leadership, the fund was named in honor of GF Esther and a medallion was designed for presentation to each Girl Friend who made the requisite contribution. These became "members" of the GF Esther C. Marioneaux Endowment Fund (ECMF) and their names were inscribed on plaques displayed at The Girl Friends Fund Annual Meeting of the Membership. In response to her desire to honor donations to the ECMF beyond that initially requested, during her tenure as president, GF Carol Temple Phillips, Past President Emeritus, established the ECMF Certificate. Since 2002, membership in the ECMF has grown to over 400 individuals and 30 chapters of The Girl Friends®, Inc. In 2016, GF Cecilia B. Henderson, Past President Emeritus, presented first-time members medallions engraved with their name, date and GFF logo. After 16 years of donating at the \$250.00 level, the donation level was raised under President LaVerne N. Boyd's administration in 2018 to the current \$300 per member donation level to assist in growing the endowment. GF Esther passed away on March 19, 2019 in Huntersville, North Carolina. However, her legacy will continue and the ECMF presentation of awards remains a sacred celebration of GF Esther C. Marioneaux and is conducted during the GFF Annual Meeting of the Membership.

We welcome our newest members, thank our continuing contributors, and thank all for sharing in our vision.

Deborah Marioneaux Allen (Charlotte)  
*In memory of Esther Commander Marioneaux*  
LaVerne Boyd (Cleveland)  
Marie Latham Bush (Toledo)  
Mary Childs (Fairfield County)  
Christy Clayton (Durham)  
Leslie Douglas-Churchwell (New Haven)  
Suzette Dave (Columbus)



Rosemary Duffy (Columbus)  
Kathlynn Duffy Espy (Columbus)  
**Roslyn Thibodeaux Goodall (Dallas)\***  
**Alexandria Holloway (Miami)\***  
Jacqueline Randolph (New Haven)  
Tamara Turnley Robinson (Atlanta)  
Benita Shobe (New York)  
Ann Walters-Pope (Miami)  
*In memory of Malcolm Walters-O'Neill*

\* New Members

### CHAPTERS

Albany  
Atlanta  
Birmingham  
Boston  
Buffalo  
Charlotte

Cincinnati  
Cleveland  
Columbia  
Dallas  
Detroit  
Durham

Loudoun County  
Louisville  
Memphis  
Miami  
New Haven  
New Jersey

New York  
Newport News  
Norfolk  
Orlando  
Philadelphia  
Richmond

Roanoke  
Seattle  
St. Louis  
Toledo  
Washington



# Esther C. Marioneaux

## Endowment Fund

### MEMBERS

Angela Adderley  
Deborah Marioneaux Allen  
Barbara W. Alston  
Jennifer D. Alston-Sako  
Janet C. Archer  
Melissa Archer  
Trudy Duncombe Archer  
Bert Asbury  
Paquita Harris Attaway  
Gail Bailey  
Cynthia Ackron Baldwin  
Faustina Balthazar-Rucker  
Lynne Rosewald Bannister  
Cecelia Powell Barnes  
Angela Bass  
Lillian McLean Beard  
Patricia Beckett  
Mary D. Bell  
Roslyn Bell  
Robin Belle  
Betty Ann Belle  
Toni DesVerney Bennett  
Michelle Bernard  
Nesta Bernard  
Angela McAlister Berry  
Daryl Jerome Berry  
Angela Blayton  
Anita Bond  
Jacqueline Bontemps  
Georgia Booker  
Kelly Booker  
Pamela J. Boone  
Dorothy Bostic  
LaVerne Nichols Boyd  
Keree Brannen  
Elba "Tina" Brewer  
Betty Brinson  
Christina Brown Bristol  
Shonda Brock  
Cheryl Whiteman Brooks  
Alma Brown  
Alma Arrington Brown  
Antoinette Brown  
Barbara Brown  
Beulah Brown  
Brenda Brown  
Carol N. Brown  
Gloria Brown  
J. Melva Brown  
Joy San Walker  
Brown Juanita  
Washington Brown  
Melva Brown  
Virginia Lewis Brown  
Betty Bell Browne  
Carol Bryant

Vicki C. Bryant  
Janice Burks  
Teresa A. Burr  
Evelyn Burton  
Marie Bush  
Jean Clarkson Butler  
Mildred Carrethers  
Lynda Perry Carroll  
Carolyn M. Carter  
Cynthia S. Carter  
Irene Carter  
Jonita Carter  
Gwen Chattman  
Gwendolyn L. Chattman  
Mary Johnson Childs  
Doris Ford Chisolm  
Kim Clark  
Miriam Clark  
Christy Clayton  
Donna Coaxum  
Anita Cox Cobb  
Cindy Carter Cole  
Barbara Bell Coleman  
Barbara Bryce Coleman  
Yolanda Coleman  
Eleanor O'Banyoun Collins  
Michelle L. Collins  
B. Stephanie Commander  
Forrestine "Tina" Coombs  
Cheryl Cooper  
Melva B. Copes  
Betty Corbitt  
Marcella Boyd Cox  
Stacee Crittenden  
Brenda Culp  
Tanya Curry  
Daryl Dance  
Suzette Scarver Dave  
Joan Spence Davis  
Sandra Days  
Mwendwa Denece  
Maria DeLongoria  
Pamela DeLongoria  
Margaret Falkener DeLorme  
Charlyne Dickerson  
Shauna Ryder Diggs  
Katherine Dockens  
Daisy Douglas  
Laura M. Douglas  
Dorothy Dowdye  
Muriel J. Drew  
Sandra Driver  
Rosemary Duffy  
Rosemary Duffy-Cooper

Nina Kenney Dunn  
Elaine Effort  
Joan Eldridge  
Caroline Taylor Ellerson  
Deanne Hope Emerson  
Cecelia Epperson  
Elizabeth Espy  
Elizabeth N. Espy  
Kathy Espy  
Kathy D. Espy  
Amy Espy-Smith  
Laura Espy-Bell  
Lynne Espy-Williams  
Hazel Ferguson  
Scyla Murray Fernandez  
Cheryl Finley  
Hillarie Flood  
Joan Sessoms Ford  
Margaret E. Foster Franklin  
Veronica Marshall Frazier  
Shirley D. Freeman  
Jodi Gallman  
Margaret Gaines-Clark  
Kitty Gardiner  
Connie Gee  
Mary Beaudoin Gibbons  
Nanette Binford Gibson  
Sonya Goldsboro  
Marina Grant  
Tiffini Greene  
Phoebe A. Haddon  
Maeble Hairston  
Dela Hale  
Joan Hall  
Bernadette Hamilton  
Lyn Hamlin  
Janie Greenwood Harris  
Robin Leach Harris  
Sharon Harris  
Joya Harrison  
Valerie Harrison  
Lucille Brinson Harper  
Jacquelyn T. Hartley  
Toni D. V. Hawkins-Bennett  
Margaret Haynes  
Stacy Haynes-Nelson  
Cecelia B. Henderson  
Charlotte Henderson  
Julia H. Henderson  
Gwen Hicks  
Jessica Hicks  
Elizabeth Hilton  
Imogen Hines  
Harriet D. Hobson  
Yolanda Holmes  
Olga Holt

Olga Holt  
Joan Willis Holton  
Ruby Homayssi  
Helen Hopson  
Deanna Ford Horton  
Sheilah Shaw Horton  
Royalynne Hourihan  
Dolores B. Hudson  
Alice K. Houston  
Agatha Howard  
Wanda Coleman Hudson  
Shirley J. Hughes  
Casma Huie  
Myrtle J. Humphrey  
Annie Hunter  
Carol Iglesias  
Joan James  
Daisy Jeffries  
Alexine Johnson  
Audrey E. Jackson  
Debbie C. Jackson  
Emily Jackson  
Lynette Jackson  
Valerie J. Branch Jackson  
Joan James  
Daisy Jeffries  
Gygi Jennings  
Andrea L. Johnson  
Annette Johnson  
Eddie Bernice Johnson  
Erica Nicole Johnson  
Ernestine Norwood Johnson  
Evelyn Johnson  
Joan Arrington Johnson  
Mae Coleman Johnson  
Tamara Harris Johnson  
Carla D. Jones  
Laren Jones  
Leslie Davis Jones  
Michele W. Jones  
Rosalyn Jones  
Shirley Jones  
Carolyn Lamar Jordan  
Margaret H. Jordan  
Anona Joseph  
LeVerene Kelley  
Cynthia Kelly  
Elsie B. Kennedy  
LaVerne Dukes King  
Kathleen C. A. Knight  
Betty Kolb  
Victoria Lacey  
Debra Lamb  
Barbara M. Lanier  
Carolyn Contee-Lassiter

*Bringing Dreams to Life*



# Esther C. Marioneaux

## Endowment Fund

### MEMBERS

Dede Lea	Gwendolyn Pearson	Benita F. Shobe	Marita Turner
Jean Leach	Sandra Pemberton	Nancy Sergile	Oddis Calvin Turner
Melanie B. Leak	Deborah L. Perry	Jacquelyn Shropshire	Barbara Robinson Utterback
Kimberly Leslie-Patton	Ruth L. Pettis	Mirian Shropshire	Janice Valentine
Donna Lewis	Alona Phillips	Terilyn Shropshire	Annette VanDevere
Lynn Lewis	Carole Temple Phillips	Karen F. Shirley	Emma S. Walker
Tina Lewis	Elyse Phillips	Anne Simmons	Karen Hodges Walker
Charisse Lillie	Martha D. Phillips	Gwen Simmons	Shirley Walker
Eveline Lloyd	Neil Foster Phillips	Leslie Simmons	Valaida Walker
Rhea Lloyd	Aurelius H. Pitts	Sylvia A. Simmons	Ann E. Walters-Pope
Edna Center Lofton	Marie Pogue	Barbara Simpkins	C. Linda Waples
Vada Love	Heather Poladian	Rosalind Sims	Barbara Weaver Ward
Jenny Lovell	Mildred Pollard	Rose Singley	Ava F. Washington
Lori Helen Luis	Josephine Poindexter	Marzetta F. Sinkler	Daryl Jordan Washington
Andre Mahone	Camille Porter	Grace Hopson Smith	Barbara Lord Watkins
Andrea T. Mahone	Marie E. Porter	Racheal Norcom Smith	Harriet Watson
Teri Mallett	Ersa Hines Poston	Marilyn M. Smith	Bessie H. S. Weaver
Stephanie J. Marioneaux	Joyce Price	Monica Smith	Jacquelyn Hartley White
Esther Commander Marioneaux	Marion Proffitt	Shirley Powe Smith	Nola Lancaster Whiteman
Robyn Markoe	Dorothy Pryor	Brenda Snead	Alease Williams
Taryn Markoe	Shirley Williams Purvis	Konnetta Sparks	Doris Williams
Eva Martin	Deborah Pye	Virginia Scott Speller	Esther Williams
Anita Marioneaux Martinez	Eleanor Quash	Sharon A. Spencer	Frances Williams
Barbara Mason	Joyce Ford Quick	Cheryl Spicer-Bryant	Julia Williams
Lorraine Matthews	Jacqueline Randolph	Cecile Kennedy Springer	Marguerite L. Williams
Betty D. McClain	Sharon Rencher	Donna Sprott	Donna Wilson
Belma McClaskey	Barbara Rice	Cheryl Stanley	Shelia Wilson
Sylvia McKinney	Carolyn Rice	Nedra Starling	Sonali B. Wilson
Juanita D. Melford	Michelle Richardson	Susan Stephens	Margaret Bush Wilson
Yvonne Minor-Ragan	Joan Belle Ricks	Clotilde Stenson	Non-Members
Terrelle Mitchell	Pamela Elizabeth Riddick	Lisa Stenson- Desamours	J. Patrick Hudson
Margaret Moore	Vera Riddick	Cheryl L. Steward	
Margaret Turman Moreland	Ida Risbrook	Marilyn Strong	
LaShana B. Morris	Emma Roberts	Carolyn Young Suarez	
Thelma Morris	Agnes G. Robinson	Myrna Symes	
Jessica L. Morse	Alexis B. Robinson	Ruthie Ida Tate	
Carolyn Lewis Mosby	Fawn Robinson	Kathy Taylor	
Sandra L. Murdock	Irene O'Banyoun Robinson	Paula Whitfield Taylor	
Maria Murphy	Sylvia K. Robinson	Phyllis Taylor	
Maria D. Murphy	Lynne Williamson Rogers	Betty Wimberly Thomas	
Pamela Elizabeth Murphy	Marcia Boddy Rogue	D. Conrada Gill Thomas	
Jo Foster Murray	Georgia Tallier Russian	Inez Thomas	
Ellen Bentley Nash	Dorothea Moore Saunders	Lorna Thomas	
Antoinette Johnson Neals	Leslie Joy Sawyer	Lydia Thomas	
Carol Neyland	Darlene Jeffries Schaller	Claudia Thompson	
Lisa A. Nichols	Brenda Scott	Jackie Threadgill	
Gladys E. Nichols	Marie Ray Scott	Deanna Shobe Tinsley	
Lynell C. Nunn	Karen Selsey	Shirley Tolentino	
Emmekunla Nylander	Nancy Sergile	Cecile Tolliver	
Phyllis Osbourne	Ann Sewell	Winifred Veronica Torbet	
Julie Othman	Joyce Sewell	Tamara Torbert	
Faye D. Owens	E. Christine Ramsey Shack	Vivian Tuck	
Maxine Owens	Florence Sharpless	Shuana K. Tucker Sims	
Cheryl Parker	Juanita Shavers	Chaton T. Turner	

*Bringing Dreams to Life*



## *Scholarship Donations*

**GENERAL / NAMED**

**The Girl Friends Fund, Incorporated®**

**~ VISIONARY LEVEL (\$15,000 - \$24,999) ~**

**ANITA PEEK GILGER, MD TRUST**

**~ BENEFACITOR LEVEL (\$1,000 - \$4,999) ~**

## *Chapters*

**The Cincinnati Chapter**

**The Cleveland Chapter**

*In honor of Named Scholarship for GF Gwendolyn Johnson*

**The Columbus Chapter**

*In honor of GF LaVerne Dukes King,  
former National President, Columbus Chapter*

**The Durham Chapter**

**The Miami Chapter**

**The New Haven Chapter**

**The Orlando Chapter**

**The San Diego Chapter**



# Scholarship Donations



GENERAL / NAMED

## Individual Members

**Jacqueline Bontemps (Newport News)**

**LaVerne N. Boyd (Cleveland)**

*In honor of LaVerne N. Boyd 30<sup>th</sup> Anniversary Celebratory Scholarship*

**Marcella Boyd Cox (Cleveland)**

*In honor of Named Scholarship for GF Gwendolyn Johnson*

**Tangee Gibson (Dallas)**

**Jacqueline C. Hrabowski (Baltimore)**

*In honor of Named Scholarship for GF Jacqueline C. Hrabowski*

**Jacqueline Randolph (New Haven)**

**Erika N. Salter (Dallas)**

*In honor of Erika T. Salter 30<sup>th</sup> Anniversary Celebratory Scholarship*

**Marie Ray Scott (Las Vegas)**

## Non - Members

**AARP Multicultural Leadership Department**

*In support of Roslyn Thibodeaux Goodall*

**The Melissa Charitable Foundation**

*In support of Ann Walters-Pope*

**Smiley Wiley Breast Cancer**

*In support of Ann Walters-Pope*

# Scholarship Donations

GENERAL / NAMED

## ~ PARTNER LEVEL (\$250 - \$999) ~

### Chapters

The Birmingham Chapter  
The Chicago Chapter  
The Dallas Chapter  
The Memphis Chapter  
The New York Chapter  
The Norfolk Chapter  
The Roanoke Chapter  
The Washington Chapter

The Boston Chapter  
The Columbia Chapter  
The Detroit Chapter  
The New Jersey Chapter  
The Newport News Chapter  
The Richmond Chapter  
The Seattle Chapter

### Non - Members

Marie Latham Bush (*Toledo*)  
Nina Kenney Dunn (*Newport News*)  
Cecilia Henderson (*Buffalo*)  
Jean Hurd (*Boston*) – In honor of Named Scholarship for Carole T. Phillips  
Annette Johnson (*Albany*)  
Debra Hunter Johnson (*Dallas*)  
Cynthia Bearden McAdory (*Miami*) – In honor of GF Ann Walters-Pope  
Faye D. Owens (*Louisville*)  
Emmekunla Nylander (*Buffalo*)  
Lori Parker (*Dallas*)  
Fawn Robinson (*Pittsburgh*) – In honor of Named Scholarship for Carolyn T. Carter  
Joyce Ford Quick (*Buffalo*)  
Marzetta Sinkler (*Roanoke*) – In memory of William Sinker  
Vivian Crawford Tuck (*San Diego*)  
Ann Walters-Pope (*Miami*)  
In memory of Malcolm Walters O'Neill  
Barbara Lord Watkins (*Dallas*)





## Scholarship Donations

### Non - Members

**Vivian Cabrerizo** – *In support of Ann Walters-Pope*  
**Canyon Family Foundation, Inc.** – *In support of Ann Walters-Pope*  
**Cisneros Insurance Agency** – *In support of Ann Walters-Pope*  
**Marcia Elam** – *In support of Tamara Turnley Robinson*  
**Lopez Insurance and Financial Services, Inc.** – *In support of Ann Walters-Pope*  
**Rick Sanchez Insurance Agency** – *In support of Ann Walters-Pope*  
**Frank Walker Insurance Agency, Inc.** – *In support of Ann Walters-Pope*  
**Your Cause Charitable Giving**

### ~ FRIENDS LEVEL (\$25 - \$249) ~

### Chapters

**The Fairfield County Chapter**  
**The Minneapolis / St. Paul Chapter**  
**The Trenton Chapter**

**The Las Vegas Chapter**  
**The New Orleans Chapter**

### Non - Members

**Jennifer Alston (Roanoke)** – *In honor of GF Carolyn Patterson*  
**Teresa Bazemore (Philadelphia)**  
**Angela McAlister Berry**  
*In memory of GF Carole-Ann Henderson Brockenborough (Durham),*  
*GF Barbara Zuber (Albany), BF W. Wayne Perry (Durham), BF Douglass Diggs (Detroit)*  
**Ritchie Manley Bowden (Memphis)**  
**Tiffany Britton (Miami)** – *In honor of GF Ann Walters-Pope*  
**Florence Simkins Brown (Miami)**  
*In honor of GF Ann Walters-Pope*  
**Denise Bunkley (Dallas)**  
**Marla C. Burch (Roanoke)**  
**Mary Calloway (Roanoke)**



**Rheba Cannaday (Roanoke)** – *In memory of Irvin (Earl) Cannaday Jr.*  
**Diane Clark (Trenton)**  
**Faye Clark (Trenton)**  
**Margaret Gaines Clark (Trenton)**  
**Nadine Clifford (Buffalo)**  
**Kimberly Cooper (Miami)** – *In honor of GF Ann Walters-Pope*  
**Delene Copeland (Trenton)**  
**Beverly Crawford (Miami)** – *In honor of GF Ann Walters-Pope*  
**Gail Ash Dotson (Miami)** – *In honor of GF Ann Walters-Pope*  
**Leslie Douglas-Churchwell (New Haven)**  
*In honor of the Named Scholarship for GF Carolyn M. Carter*  
**Kathleen Delemos (Trenton)**  
**Deanna Emerson (Trenton)**  
**Doris N. Ennis (Roanoke)** – *In memory of Hugh Wesley Ennis II*  
**Sonya Goldsboro (Las Vegas)**  
**Leisha Gordon (Buffalo)**  
**Patsy Graham (Miami)** – *In honor of GF Ann Walters-Pope*  
**Lyn Hamlin (New Jersey)**  
**Dorothy Harper (Trenton)**  
**Valerie Harrison (Philadelphia)**  
**Thelma T. Haynesworth (Roanoke)** – *In memory of Helen Harris*  
**Carolyn Hazelton (Miami)** – *In honor of GF Ann Walters-Pope*  
**Patricia W. Henry (Roanoke)**  
**Valeria Hodges (Springfield)**  
**Lanella Hooper-Williams (Trenton)**  
**Gwendolyn Barrington Jackson (New Jersey)**  
**Beverly Jennings (Trenton)**  
**Jewel Johnson (Trenton)**  
**Inez Jones (Buffalo)** – *In honor of Named Scholarship for Carolyn M Carter*  
**Yvette Kenner (Trenton)**  
**Sheila Long (Miami)** – *In honor of GF Ann Walters-Pope*  
**Marla Marshall (San Diego)**  
**Saron McEnheimer (Roanoke)**  
**Susan McKenzie (Washington DC)** – *In memory of GF 'Mike' Baird*  
**Yvette Mozie-Ross (Baltimore)**  
**Paula Murphy (Buffalo)**  
**Antoinette Neals (New Jersey)**  
**Lauren N'Namdi (Miami)** – *In honor of GF Ann Walters-Pope*  
**Faye Owens (Louisville)**  
**Kimberly Parris (New Jersey)**  
**Carolyn K. Patterson (Roanoke)** – *In memory of Vencil Patterson*  
**Gwendolyn Pearson (Trenton)**  
**Emily Pollard (Philadelphia)**  
**Joyce Ford Quick (Buffalo)**



## *Individual Members*

---

**Jacqueline Randolph (New Haven)** – *In honor of Named Scholarship for Carolyn T. Carter*

**Beth Y. Reddick (Miami)** – *In honor of GF Ann Walters-Pope*

**E. Paulett Moore Rogers (New Haven)**

*In honor of the Named Scholarship for GF Juanita P. Humphrey*

**Benita Shobe (New York)**

**Terilyn A. Shropshire (California)**

**Carol Sills (Trenton)**

**Judith Simkins (Trenton)**

**Mollie Simons (Fairfield County)** – *Esther Marioneaux Endowment*

**Beth Sinkler (Roanoke)** – *In memory of William Sinkler*

**Cheryl Spicer (Trenton)**

**Donna Twisdale Sprout (New Jersey)**

**Leslie Taylor Stovall (Roanoke)**

*In honor of GF Phyllis Taylor (Potomac) & In memory of GF Cynthia Taylor-Wolfe (Potomac)*

**Paula Taylor (Trenton)**

**Bettye Thomas (Trenton)**

**Debra Thomas (Baltimore)**

**Marye Thomas (Dallas)**

**Mary Tillman (Miami)** – *In honor of GF Ann Walters-Pope*

**Tamara Turnley Robinson (Atlanta)** – *In honor of GF Mirian Shropshire*

**Susan Van Buren (Trenton)**

**Yolanda Bostic Williams (Albany)**

**Yvette Williams (Trenton)**

**Margaret Williamson (Trenton)**

**Loretha Wimbush (Roanoke)** – *In memory of Callie & David Shropshire*

## *Non - Members*

---

**Edmond Effort** – *In support of Fawn Robinson*

**Kelly V. Hagar Insurance Agency Inc.** – *In support of Ann Walters-Pope*

**Darlene Jeffries-Schaller**

**Alejandro Lopez** – *In support of Ann Walters-Pope*

**Carolyn Martin** – *In support of Roslyn Thibodeaux Goodall*

**Carolyn Eskridge Martin** – *In support of Roslyn Thibodeaux Goodall*

**Danette Mitchel** – *In support of the Las Vegas Chapter*

**David Montgomery**

**Rey Polanco** – *In support of Ann Walters-Pope*

**Darlene Jeffries-Schaller** – *In support of Fawn Robinson*



## ~ SILENT AUCTION DONATIONS ~

### **\$1000 +**

**Richelle Watkins (Toledo)**

### **\$500 - \$999**

**Toya Davis (Dallas)**

**Debra Hunter Johnson (Dallas)**

**Eddie Bernice Johnson (Dallas)**

**The San Diego Chapter**

### **\$200 - \$499**

**The Boston Chapter**

**The Columbus Chapter**

**Danette Mitchell (Las Vegas)**

**The Cleveland Chapter**

**The Miami Chapter**

**Tracey Nash-Huntley (Dallas)**

### **\$25 - \$199**

**V Spencer Austin (Dallas)**

**Mildred Carrethers (Dallas)**

**Deanna Emerson (New Jersey)**

**Sonya Goldsboro (Las Vegas)**

**Brenda Lauderback (Dallas)**

**Angela May (Dallas)**

**Kimberly Powell (Dallas)**

**Ava Washington (Dallas)**

**Karma Rodgers Butler (Las Vegas)**

**Marnese Elder (Dallas)**

**Roslyn Thibodeaux Goodall (Dallas)**

**Deborah Hutson (Dallas)**

**Cheryl Malone (Dallas)**

**Venita Owens (Dallas)**

**Marye Thomas (Dallas)**

**Barbara Lord Watkins (Dallas)**

## ~ PIONEERS CAMPAIGN ~

### **INSPIRATIONAL LEVEL (\$500 - \$999)**

Individual Members

**Joan Ford (Dallas)**

### **MENTOR LEVEL (\$250 - \$499)**

Non-members

**Pfizer Foundation**

### **EDUCATOR LEVEL (\$100 - \$249)**

Individual Members

**Annette Johnson (Albany)**

### **TUTORIAL LEVEL (\$50 - \$99)**

Individual Members

**Marilyn Bowser (New Jersey)**



# Chapter Challenge

The **Chapter Challenge** is a fundraising incentive challenging **ALL CHAPTERS** of The Girl Friends®, Inc. to make a contribution to The Fund that meets one or more of the following criteria.

- Make a chapter donation of \$500 or more
- Become the chapter with the highest average per capita gift
- Give the amount equal to funding a Fund scholar for an entire year (\$1,500)
- Be the chapter that comes closest to 100 percent giving by all members

KUDOS to our top contributing chapters!!!

**DALLAS | CLEVELAND | NEW HAVEN | MIAMI**

Thank you to all of our participating Chapter and below are some that stood out!!!

Birmingham	Detroit	Newport News	Roanoke
Chicago	Durham	New York	San Diego
Cincinnati	Fairfield County	Norfolk	Washington
Columbus	Memphis	Orlando	

## MEMBER CHALLENGE

The **Member Challenge** asks every Girl Friend to step up and become a member of the Esther C. Marioneaux Endowment Fund (ECM). Girl Friends who make an individual first-time donation of \$300 or more to the ECM receive the Fund's Esther C. Marioneaux medallion.

We acknowledge and extend a heart-felt **Thank You** to the following Girl Friend for going above and beyond, making the **largest individual member contribution** that exceeded \$300!!!

**GF Kathlynn Espy (Columbus Chapter)**

We congratulate and welcome the following **New Members** to the ECM – They stepped up to the MEMBER CHALLENGE to date...Thank you!!!

**GF Roslyn Thibodeaux Goodall (Dallas Chapter)**

**GF Alexandria Holloway (Miami Chapter)**

To all of the ECM continuing contributors, thank you for sharing in GF Esther's vision by growing the Esther C. Marioneaux Endowment and the ability to continually fund scholarships.

## Eunice Shreeves Scholarship Luncheon



*Lori L. Parker*  
Chair/Dallas

Dear Girl Friends,

It is indeed my honor and pleasure to welcome you to The Girl Friends Fund, Incorporated® virtual presentation, *“Love to Fund a Future”*. As we navigate through this new normal, the luncheon committee wanted to bring some **LOVE** and **JOY** to our beloved Girl Friends during these unprecedented times.

We are excited to have the opportunity for you to meet three of our very own outstanding scholars. Ti’Ara Clark is a junior at Fisk University from the Dallas Chapter, Alanna Williams is a sophomore at Wayne State University from the Detroit Chapter and Courtney Draper is a junior at Wright State University from the Toledo Chapter. In addition, we will introduce our 2020 Scholarship recipients, and then Courtney will perform an electrifying dance performance called **HOPE**. Girl Friends, the fun does not end there, we will also have an incredible vocal performance by Crystal Thornton that will bring the house down. Crystal is a radio personality on 104.1 The Fish in Portland, OR. To continue the celebration, we would like to invite you to participate in our **LOVE HEART** raffle for the opportunity to win a \$250 Visa gift card, GFF bracelet or a Girl Friend Fund T-shirt.

We thank you in advance for the generous donations we have received from our beautiful Girl Friends, our community partners and the public at large. It is only through your commitment that we can make a difference within the lives of our young African American students.

I am incredibly grateful for the support from the Luncheon Committee, the Board of Directors, President Ann Walters-Pope and this outstanding organization. It is your exceptional commitment and contributions that are invaluable to the mission of The Girl Friends Fund, Inc.®.

Girl Friends, please join me and the luncheon committee in toasting to our Amazing Philadelphia Girl Friends and to all our Girl Friends near and far during our *“LOVE to FUND a FUTURE”* virtual presentation.

Thank you again for your continued support.

Respectfully submitted,

*GF Lori L. Parker*

GF Lori L. Parker, Chair

*Love*  
to  
**FUND**  
a  
**FUTURE**

*Bringing Dreams to Life*



The Girl Friends Fund, Inc.®  
welcomes you to



Sponsored by



Real Possibilities



## *Silent Auction*



*Sonya Goldsboro*  
Chair/Las Vegas

Dear Girl Friends Fund Board and Girl Friends,

The 2019 Silent Auction culminated in May 2019 at the Westchester Marriott Hotel in Tarrytown, NY. It is our pleasure to report that the total auction intake was confirmed as \$4926.96. Thank You E-cards were sent to all donating chapters, donating individual Girl Friends (GF), and supporting volunteers.

Pre-COVID-19, preparations for the 2020 Silent Auction was begun prior to the first Girls Friends Fund, Inc. (GFF) Board of Directors Meeting. The committee agreed upon an auction theme and color scheme which after more discussions at GFF Board of Directors Meetings were expanded to embrace the GFF Luncheon theme.

A letter of invitation to support the auction was generated and disseminated to the members of the Girl Friends®, Inc. (GF) who are the members of the GFF. A monthly reminder letter with auction instructions and requests for volunteers was disseminated up to the period when the 2020 GF Conclave was cancelled. This turn of events necessitated a change in plans for raising funds for scholarships. The committee agreed that it would ask each chapter and individual GFs to make a monetary donation to the GFF Scholarship Fund in the name of the GFF Silent Auction. A letter to this effect was disseminated to all GF, Inc. chapter presidents and liaisons for sharing with their members. The committee is hopeful that by making this “ask”, the GFF Silent Auction will remain relevant as a fundraising tool to assist our scholars.

Respectfully Submitted,

*Sonya Goldsboro*

Sonya Goldsboro,  
GFF 2019-2020 Silent Auction Committee Chair, Las Vegas Chapter

GF Jacqueline Bontemps, Committee Member, New Port News Chapter  
GF Marie Latham Bush, Committee Member, Toledo Chapter  
GF Marcella Cox, Committee Member, Cleveland Chapter  
GF Roslyn Thibodeaux Goodall, Committee Member, Dallas Chapter  
GF Cecelia B. Henderson, Committee Member, Buffalo Chapter  
GF Jacqueline Randolph, Committee Member, New Haven Chapter



# Fund Development

Dear Girl Friends:

The Fund Development Committee is charged with creating opportunities and sustainable strategies to raise more funds to support scholarships. Through a “Think Tank” concept, we considered several fundraising ideas. As part of the process, we attempted to think of ideas that would appeal and increase interest among Girl Friends and outside donors while building excitement around “Bringing Dreams to Life”.



*Ann E. Walters-Pope*  
Co-Chair/Miami



*Roslyn Thibodeaux Goodall*  
Co-Chair/Dallas

**AmazonSmile** is a program that rewards participating non-profit organizations 0.5% of purchases, made by its members. All members need to do is sign up for the service, and indicate **The Girl Friends Fund, Inc.®** (GFF) as their preferred charity. If we can get the majority of our members to join **AmazonSmile** and indicate the GFF as their charity of choice, it will not be long before proceeds from the purchases of our members grow into an amount that can potentially fund a single scholarship.

The **ScholarSip 2020 Campaign** is an opportunity for each member to support scholarships through the purchase of the 11-ounce, white porcelain signature cup, which bears the GFF logo and the name of each Chapter. These limited-edition cups will sell for \$15.00 plus a small shipping fee. We planned to pre-sell the cups and have them available at the Conclave. Based on the current environment, we decided to market the cups through the Chapters and on the GFF website. We will work with the Presidents and Liaisons to try and have them available through the chapters, based on orders.

Ideas that are under development are: a signature broach created that would celebrate sisterhood and scholarship; development of a GFF Fundraising Toolkit – the why and how we all can get involved in raising funds for the FUND; a collaboration with existing Girl Friends events around the country; A GFF Giving Day; targeting Top 20 companies with education giving; and continuing to encourage our Girl Friends to contribute... making it easy...making it FUN!!!

We will continue to consider fundraising concepts and ideas that we feel can result in our being able to raise funds to support scholarships.

Girlfriendly

*Ann E. Walters-Pope*

GF Ann E. Walters-Pope  
Co-Chair

*Roslyn Thibodeaux Goodall*

GF Roslyn Thibodeaux Goodall  
Co-Chair

You shop. **Amazon gives.** Join AmazonSmile to get started

Turn your Amazon purchases into a force for good. With every eligible purchase, **AmazonSmile** **donates 0.5%** to the charity of your choice (**Girl Friends Fund**). Join AmazonSmile, today, and help us raise funds for the **Girl Friends Fund, Inc.** This includes all Charity List purchases as well as millions of everyday items at **smile.amazon.com**.



*ScholarSip 2020 Campaign*

The Board of the Girl Friends Fund is thrilled to introduce the “ScholarSip 2020” campaign. Through the sales of our Signature porcelain cup, we endeavor to raise new scholarship dollars. The graphic, below, will adorn the 11 oz. cup which is scheduled to be available after the 2020 Conclave. We are researching the feasibility of making these cups available through the Chapters. The cups will sell for \$15.00 + a nominal shipping fee. As soon as we have the shipping details confirmed, we will forward information to Chapter Presidents and GFF Liaisons so that members may pre-order her cup(s). Just think of the huge impact your support can have in the lives of students who depend on our financial scholarships. Thank you, in advance, for your anticipated support.

# ScholarSip 2020

**The Girl Friends Fund, Inc.**



# *Special Projects Fundraising*

**The Girl Friends Fund, Inc.  
Special Projects Bracelet Fundraising  
Committee  
2020 Annual Report  
April 20, 2020**

Dear Girl Friends Fund Board and Girl Friends:



*Joyce Ford Quick,*  
Chair/Buffalo



*Cecelia B. Henderson*  
Co-Chair/Buffalo

It has been our pleasure and honor to serve as Chair (Joyce Ford Quick) and Co-Chair (Cecelia B. Henderson) of the Special Projects Jewelry Committee. We are Energized, Excited, Inspired and Motivated for another year of fundraising!

Last year we added a Sterling Silver Charm Bracelet with the NY Charm commemorating the New York Conclave. In addition, a Sterling Silver Pendant with a 30-inch adjustable chain commemorating our 30<sup>th</sup> Anniversary of the Girl Friends Fund was also made available along with the 4<sup>th</sup> Edition Signature Bracelet. Unfortunately, we do not have a charm bracelet this year. We commissioned a Limited 5<sup>th</sup> Edition Signature Bracelet, Rhinestone and Crystal Wrap. The Fund wants to use it to commemorate our 85<sup>th</sup> National Conclave. The bracelet will be on sale through our website and as always, all monies raised will be for our scholarships.

Be a part of the “Sisterhood of the Fund” and purchase yours today! Thank you Girl Friends for making this fundraiser a success while “Bringing Dreams to Life” for our many scholarship recipients. We appreciate your continued support of our mission.

Respectfully Submitted,

*GF Joyce Ford Quick, Chair*

*GF Cecelia B. Henderson, Co-Chair*

GF Joyce Ford Quick, Chair

GF Cecelia B. Henderson, Co-Chair

# *Special Projects Fundraising*

## **PURCHASE YOUR GIRL FRIENDS FUND JEWELRY**

The Girl Friends Fund Inc. ®, the GFF Board, and the Special Projects Fundraising Committee Chairman, GF Joyce Ford Quick and Co-chairman, GF Cecelia B. Henderson are excited to announce the 5th Limited Edition Girl Friends Fund Crystal and Rhinestone Wrap Bracelet now available for purchase! The proceeds from the jewelry sales will provide scholarships to graduating seniors in pursuit of higher education. With your support, the fundraiser makes it possible for the GFF to continue “Bringing Dreams to Life” and assist our youth in fulfilling their goals to attend college/university.

### **LIMITED 5th EDITION GIRL FRIENDS FUND JEWELRY**

**NEW!** Our 5th Limited Edition Girl Friends Fund **Crystal and Rhinestone Bracelet** with shinny faceted beads of crystal and clear rhinestones with a stainless steel disk engraved with GFF and “Bringing Dreams to Life”.

**Cost: \$40.00 each includes shipping and handling costs**



## **JEWELRY FROM THE 30th GFF ANNIVERSARY CELEBRATION**

From our **30th GFF Anniversary** Celebration last year, a 8 inch solid **Sterling Silver Charm Bracelet** with toggle clasp, and 2 sterling silver charms: a GFF charm and an apple charm engraved with New York and 2019, the date of the Conclave. Our plans are to add a charm representing each Conclave going forward.

**Cost: \$130.00 each includes shipping and handling costs**



From our **30th GFF Anniversary** Celebration last year, a **Sterling Silver GFF Pendant** with GFF and “Bringing Dreams to Life” on the front face and 30<sup>th</sup> Anniversary 2019 engraved on the back, with a 30 inch Sterling Silver adjustable chain. Each Special Edition Bracelet and Pendent is unique and a beautiful memory of the 30<sup>th</sup> Anniversary of the GFF supporting our youth.

**Cost: \$120.00 each includes shipping and handling costs**





## *Nominating Committee*

The nominating committee creates a slate of candidates to fill vacant offices on the Board of Directors. Membership is limited to Board Members.



Marie Latham Bush  
(Toledo)



Marcella Boyd Cox  
(Cleveland)



Fawn Robinson  
(Pittsburgh)

## *Nominating Committee - Board of Directors*

The nominating committee of the Board of Directors receives nominations and develops a slate of candidates to fill vacancies on the Board that are created as a result of the completion of terms of service. The Chair and the President discuss the needs of expertise on the Board and the recruitment of members who meet those needs is directed by the Committee.



Jennifer Clark,  
(Dallas)



Jacqueline Bontemps  
(Newport News)



Kathlynn Espy  
(Columbus)



Marie Latham Bush  
(Toledo)



Barbara Lord Watkins  
(Dallas)



# *Annual Meeting Minutes*

## **GIRL FRIENDS FUND ANNUAL MEETING OF THE MEMBERSHIP**

**MAY 2, 2019**

*Tarrytown Marriott  
New York*

**The meeting was called to order at 3:48 p.m.** by President LaVerne Boyd. Quorum established. GF Donna Coaxum gave a meditation. GF Marie Latham Bush called the roll for Board Directors and Gf Chapters.

**GFF Present:** Melissa Archer, Jacqueline Bontemps, LaVerne Boyd, Marie Latham Bush, Donna Coaxum, Marcella Cox, Kathlyne Espy, Joyce Quick, Roslyn Thibodeaux Goodall, Beth Jones, Ann E. Walters-Pope, Tamara Turnley Robinson, Barbara Lord Watkins, Lori L. Parker, Sonya Goldsboro, Cecelia Henderson, Faye Owens, and Fawn Robinson.

**GFF Absent:** Annette Johnson, LaShanna Broussard-Morris, Jacqueline Randolph, Nedra Starling

### **Chapters Present:**

Atlanta, Baltimore, Buffalo, Charlotte, Chicago, Cleveland, Columbia, Columbus, Dallas, Durham, Fairfield County, Las Vegas, Louisville, Memphis, Miami, Minneapolis/St. Paul, Nashville, New Haven, New Orleans, Philadelphia, Pittsburgh, Potomac, Seattle, Toledo.

**Chapter absent:** Albany, Boston, Brooklyn, California, Cincinnati, Detroit, Greenville, Houston, Loudon County, Milwaukee, New Jersey, New York, Newport News, Norfolk, Orlando, Philadelphia, Richmond, Roanoke, San Diego, Seattle, Springfield, St. Louis, Trenton, Washington.

Minutes from 2018 Annual Meeting of the Membership, Greenbrier, WVA were approved with corrections that Memphis and Nashville Chapters were present and in the Presidents report GF Beth Jones is from the Atlanta Chapter not Albany Chapter. Motion made by GF Roslyn Thibodeaux Goodall; Seconded by GF Ann E. Walters-Pope.

### **Reports – Officers:**

**President** – GF LaVerne Boyd apologized for the delay in starting. She emphasized the importance of the scholars and the Girl Friends who have and continue to support The Fund. What a wonderful occasion to celebrate thirty (30) years of The Girl Friend Fund, Inc.® (GFF) and recognize and honor those 48 Pioneers who envisioned and made the dream come true. The Fund has raised over a million dollars and processed over 800 scholarships to assist our 203 minority scholars. Our goal this past year was to ensure The Fund had an additional thirty-thousand dollars (\$30k) to assist our scholars and we exceeded that goal. In fact, at the luncheon, we had already raised \$47,500 and to make it an even \$50,000 we asked GFs to donate \$1500. GF Linda Carroll donated \$2000 which brought our total to \$50,500 and contributions are still being received. We had three 30<sup>th</sup> Anniversary Celebration Scholarships this year named from the three donors who each gave \$5000.00: Girl Friends Georgia T. Rusan, Erica N. Salter, and LaVerne Boyd. GF Jacqueline Hrabowski (Baltimore Chapter) pledged \$30,000.00 over the next three years for a scholarship named in her honor. Our financial team reports will reflect the accuracy of our investments and record keeping. Thank you, Girl Friends. (Please refer to the entire report in the GFF annual Report 2019.)

# Annual Meeting Minutes

**Vice President** – GF Ann E. Walters-Pope had no report.

**Secretary** – GF Marie Latham Bush thanked the GFF for the opportunity to serve as secretary this past year.

**Financial Secretary** – GF Tamara Turnley Robinson reported that The Fund had received over 400 Girl Friend donations from July 18, 2018 – May 19, 2019:

Esther Marioneaux Endowment Fund	\$ 12,520.00
General Donations	\$ 53,680.00
Pioneer Campaign	\$ 45,560.00
GFF Jewelry	\$ 11,363.25
Eunice Shreeves Luncheon	\$ 16,560.00
Eunice Shreeves Silent Auction	\$ 750.00
Gwendolyn Johnson Scholarship	\$ 2155.00
Carolyn Carter Scholarship	\$ 1850.00
Carole Temple Phillips Scholarship	\$ 2850.00
Anita Peek Gilger Trust	\$ 15,500.00
Other	\$ 99.00
<b>TOTAL</b>	<b>\$162,887.25</b>

Between April 11- May 2, 2019 \$10,700 was received. More than half of all the donations were made online.

**Treasurer** – GF Beth Jones reported the

**Beginning balance on July 1, 2018**

Operating checking	\$183,093.19
Conclave	\$ 3,704.26
Savings Committed	\$ 69,905.33
Savings Restricted	\$ 2,503.28
Savings Endowed	\$ 5,882.95
Bank of America	\$265,089.01
Ameriprise Investment	\$287,346.80

**Ending Balance April 11, 2019**

Operating checking	\$173,371.98
Conclave	\$ 4,723.09
Savings Committed	\$ 69,938.52
Savings Restricted	\$ 72,968.70
Savings Endowed	<u>\$ 13,185.30</u>
Bank of America	\$334,187.59
Ameriprise Investment	<u>\$292,493.87</u>
<b>Total net Assets as of 4/11/2019</b>	<b>\$626,681.46</b>

GF Beth stated she will do an addendum to her report to bring it up to date.

**Assistant Treasurer** – GF Lori L. Parker stated this was a new position in 2017 with the purpose of putting the data into Quickbooks. She has input over 18,000 figures.

**Assistant Financial Secretary** – GF Annette Johnson was absent. No report

### **Committee Reports**

**Audit** – GF Barbara Lord Watkins stated an internal audit of The Fund was conducted of the financial records from July 1, 2017 – June 30, 2018. It was “determined that The Girl Friends Fund, Inc.® received and disbursed funds in accordance with the intended purposes of the funds. In addition, the financial record of The Fund reflects all financial and fiscal activities.”

**Pioneer Campaign** – GF Joan Sessoms Ford reported that the \$30,000 Pledge campaign exceeded \$50,000.

**Legal Review** – GF Donna Coaxum thanked her committee for their work. The registered trademark for GFF has been obtained and a copy is in the inside cover of the 2019 Annual Report. She asked Girl Friends to refer to her report for more details.

**Scholarship** – GF Fawn Robinson stated there were 23 applications for four-year scholarships this year. Thirteen of the applicants were awarded the four-year renewable scholarships. Thirty-three scholars were eligible to apply for renewal; 29 applied; 24 were eligible for renewal. Two scholars received Cynthia Carter Scholarship (\$3000 each) for Medical School. GFF has had over 800 applications/inquiries and helped over 203 scholars.

**Fundraiser/Luncheon** – GF Barbara Lord Watkins had to leave early but asked that any comments be shared with her.

**Silent Auction** – GF Sonya Goldsboro thanked everyone for their support and help.

2019 Auction items	\$3,880
Buffalo Chapter	\$ 500
San Diego Chapter	\$ 500
<b>Total</b>	<b>\$4,880</b>

**Fundraising/Special Projects** – GFs Joyce Ford Quick and Cecelia Henderson thanked everyone for their support. Chapters were reminded to pick up jewelry for their members who were not present. Money collected thus far is \$11,253.25. The three options for jewelry were sterling silver charm bracelet with commemorative apple charm (NY – Big Apple); sterling silver pendant commemorating the 30th anniversary; and a 4th edition stackable bracelet. A new charm with the conclave location will be available each year to add to the charm bracelet.

**Nominations to Board** – GF Faye Owens stated there were two candidates. GF Marie Latham Bush (Toledo) returning board director 3-year term and GF Jacqueline Hrabowski (Baltimore) new board member 3-year term. GF Marie Latham Bush received 47 votes; GF Jacqueline Hrabowski received 44 votes. Both were elected.

### **Elected Officers of The Girl Friends Fund, Inc. 2019 – 2021**

President	Ann E. Walters-Pope (Miami)
Vice President	Marie Latham Bush (Toledo)
Secretary	Roslyn Thibodeaux Goodall (Dallas)
Treasurer	Beth Jones (Atlanta)
Financial Secretary	Tamara Turnley Robinson (Atlanta)

**New Business** – Vice President GF Ann E. Walters-Pope and former President GF Cecelia Henderson presented outgoing President GF Laverne Boyd with a beautiful glass artwork. GFs LaVerne Boyd and Ann E. Walters-Pope presented GF Shuana Tucker-Sims with a glass artwork for the time she served as Assistant Financial Secretary before she left the board to serve as the Historian for The Girl Friends®, Inc.

Meeting adjourned at 5:18 p.m.

Respectfully Submitted by,

*Marie Latham Bush*

GF Marie Latham Bush  
Secretary

## *Committee Chairs 2019-2020*



**GF Barbara Lord Watkins**  
Audit Chair



**GF Beth Jones**  
Budget Chair



**GF Marie Latham Bush**  
Communications Chair



**GF Lori L. Parker\***  
Eunice Shreeves Luncheon



**GF Roslyn Thibodeaux Goodall**  
Chair Fund Development Co-Chair



**GF Ann E. Walters-Pope**  
Fund Development Co-Chair



**GF Joyce Ford Quick**  
Fundraising Special Projects Chair



**GF Cecelia B. Henderson\***  
Fundraising Special Projects Co-Chair



**GF Jacqueline Hrabowski**  
Investment Chair



## *Committee Chairs 2019-2020*



**GF Roslyn Thibodeaux Goodall**  
Hospitality Chair



**GF Tracey Allison\***  
Legal Review Chair



**GF Marie Latham Bush**  
Liaison & Chapter Relations



**GF Jennifer Clark\***  
Nominating – Board Positions Chair



**GF Marcella Boyd Cox**  
Nominating – Board Officers Chair



**GF Fawn Robinson**  
Scholarship Chair



**GF Sonya Goldsboro\***  
Silent Auction Chair



**GF Fawn Robinson**  
Website Chair



## *Directors 2019-2020*



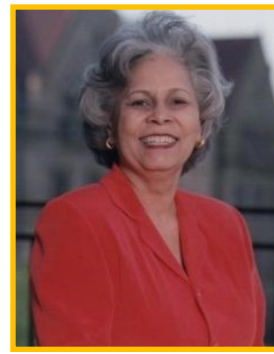
GF Jacqueline F. Bontemps



GF LaVerne N. Boyd



GF Marcella Boyd Cox



GF Kathlynn D. Espy



GF Jacqueline Hrabowski



GF Joyce Ford Quick



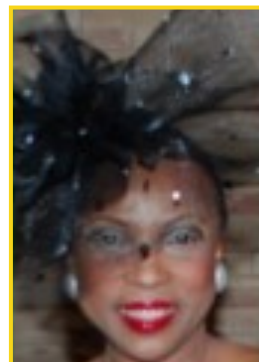
GF Jacqueline Randolph



GF Fawn Robinson



GF Barbara Lord Watkins



GF Margaret Gaines Clark  
EX-OFFICIO  
President, The Girl Friends®, Inc.

## *Officers 2019-2020*



GF Ann E. Walters-Pope  
President



GF Marie Latham Bush  
Vice President



GF Roslyn Thibodeaux Goodall  
Secretary



GF Beth Jones  
Treasurer



GF Lori Parker\*  
Assistant Treasurer



GF Tamara Turnley-Robinson  
Financial Secretary



GF Annette Johnson  
Assistant Financial Secretary



GF Tracey Allison\*  
Parliamentarian





2020



The Girl Friends Fund, Inc. Registered Agent 10011 Silver Creek  
Road Dallas, Texas 75243 Email: [girlfriendsfund@gmail.com](mailto:girlfriendsfund@gmail.com)

Please visit our website <http://girlfriendsfund.org>

