

THE GIRL FRIENDS FUND, INCORPORATED



# ANNUAL REPORT

# 2018

FINANCIAL REPORT  
July 1, 2016 - June 30, 2017

REPORT OF CONTRIBUTIONS  
July 1, 2017 – April 30, 2018

BRINGING  
*Dreams*  
TO  
*Life*



# TABLE OF CONTENTS

## *Bringing Dreams to Life* THROUGH...

President's Message 2017 – 2018	3
Presidents Advisors	
History of The Girl Friends Fund, Inc.	5
Past Presidents Emeriti The Girl Friends Fund, Incorporated	7
Investment Committee	8
Secretary	10
Assistant Secretary	14
Financial Secretary	15
Annual Income Report	16
Treasurer	17
Internal Audit Committee	18
2017 Audit Report	19
Scholarship	27
Scholarship Recipients 2018	
Scholarship Recipients 1995 – 2017	
Named Scholarships	
Scholarship Committee	
Fundraising Committee Report	34
Special Projects Bracelet Fundraising Committee Report	35
Third Edition Bracelet Order Form	36
Eunice Shreeves Scholarship Luncheon	38
Silent Auction	39
Contributions	40
Thank You - Helen Keith Wright	
General Fund	
Thank You - Patricia A. Maryland DrPH	
Esther C. Marioneaux Endowment Fund	
Chapter Challenge	48
Communication Committee	49
Liaison and Chapter Relations Committee	51
Legal Review/Bylaws	52
Website/Technology Committee	53
Overview of Donations to the GF Fund, Inc.	54
Communication Report	55
Spring Newsletter	57
Nominating Committee	60
Board of Directors	
Board of Officers	

## PRESIDENT'S MESSAGE



GF LaVerne Nichols Boyd  
President  
The Girl Friends Fund, Inc

It has been my privilege to serve our Girl Friends Fund (GFF) for my first year beginning July 1, 2017. *Thank you so very much for your support during this year!* Our Fund is evolving and successfully growing as a nonprofit entity and charitable arm of Girl Friends, Inc. My vision for the Fund began with a recognition that a review of components of any organization is necessary to insure its viability. To that end, we began the year with the theme "One Team, One Mission,...Ensuring a Strong Foundation for the Future. We have accomplished the following:

- Initiated our GFF Trademark process to prevent our Logo from being infringed upon and as another means of potential revenue through sales promoting its likeness and our slogan "Bringing Dreams to Life"
- Reinstated functionality of our GFF Website by revising and updating general Information Annual Reports, and financial data.
- Instituted a permanent GFF Web page for added convenience in processing payments for Annual Luncheon and memorabilia sales.
- Conducted an Independent Audit in accord with Article 6, Section 4 of the GFF Bylaws.
- Reorganized and enhanced financial controls for the GFF:
  - o Developed original policies and procedures for Treasurer and Financial Secretary positions to ensure high quality and care in the creation and maintenance of financial records and documents.
  - o Obtained and Installed a Quick Books Program for Nonprofits and recorded our 1800 plus members and the G.F. Inc. 47 Chapters to assist with documenting Fund donations and strengthening controls.
  - o Instituted the new position of Assistant Treasurer under Article 5, Section 1 of GFF Bylaws and developed original policies and procedures for that position.
  - o Identified, recruited, and added to our Officers an accountant certified in Quick Books to act as GFF Assistant Treasurer.
- Improved the scholarship application process and conducted a virtual training to assist Chapters resulting in an increase in scholar applications for 2018
- Conducted conference calls to educate Chapter Liaisons about their importance to the GFF and produced a functional description of position objectives.
- Created and disseminated GFF Newsletters to advise of GFF activities and provide a source for donations.
- Introduced a new initiative designated as GFF Pioneers of Fund Scholarship Campaign to honor the contributions of Girl Friends who have been instrumental in the beginnings of our beloved GFF.

Education remains an important equalizer in our communities. I respectfully ask that we all consider recommitting ourselves to our mission as members of our Fund. In so doing we ensure that our scholars



as future educators, doctors, scientists, lawyers, and other educated professionals have the strength of our numbers, the wealth of our talents and resources, as well as the focus of our dedication to rely on while "Bringing Dreams to Life" , One Scholar at a Time.

With Love and in Friendship,

*GF LaVerne N. Boyd*

GF LaVerne N. Boyd

## PRESIDENT'S ADVISORS



GF Cecelia  
Henderson  
Buffalo



GF Joan  
Sessoms Ford  
Dallas



GF Carole  
Temple Phillips  
Brooklyn



GF Cecile  
Kennedy  
Springer  
Pittsburgh



GF Helen Keith  
Wright  
Cleveland

## HISTORY OF THE GIRL FRIENDS FUND, INC.



The Girl Friends Fund, Inc (G.F.F. Inc.) was incorporated in Texas on February 22, 1988 and was recognized as a non-profit charitable organization by a five-year advance ruling from the Internal Revenue Service (IRS) on June 30, 1989. The Final Ruling of the IRS that the G.F.F. Inc. was continuing to operate as a non-profit charitable organization was received from the IRS on December 1, 2008.

The G.F.F. Inc. was the brainchild of Girl Friends Erska Posten and Helen Wright, past presidents of the Girl Friends, Inc. (G.F., Inc). Prior to the 1987 Girl Friends Conclave then G.F. Inc. President Carolyn Wells appointed a three-member committee to explore the feasibility of securing a 501© (3) public charity tax exemption from the IRS for the G.F. Inc. The members of the committee were GF Joan Sessoms Ford, Chairperson; GF Helen Wright, Advisory Board Chairperson and GF Yvonne Gandy. The Committee gave its recommendation at the 1987 Conclave to establish a separate fund dedicated to charitable purposes. The delegates to the 1987 Girl Conclave accepted the recommendation and approved the establishment of a separate charitable corporation to which tax-deductible contributions could be made.

The mission of this new corporation was financial assistance for college-bound students who demonstrated financial need, and distribution of proceeds of fundraising for other charitable purposes. This separate Fund was named "The Girl Friends Fund" by vote of the Conclave delegates. A Joint Committee was appointed at the 1987 Conclave to facilitate applying to the IRS for the approval of a charitable tax-exempt corporation, i.e. the G.F.F., Inc. The 1987-1988 Joint Committee met during the 1987 Conclave and for filing for incorporation of the G.F.F., Inc. in Texas, elected Initial Board members GF Rebecca Kingslow, Chairperson,

GF Lucille Blondin and GF Joan Sessoms Ford. GF Joan, as Legal Counsel, was charged with proceeding with preparation of all documents necessary for incorporation and then filing with the IRS for tax exempt charitable status. Five members of the Dallas G.F., Inc. Chapter served as incorporators and signed the document for filing for incorporation on December 22, 1987. Articles of Incorporation, By-laws, Financial Data and the identification of Board members and Officers were required for filing with the IRS. The Chapters of G.F., Inc, were given the opportunity to comment on the Bylaws, and appropriate recommended revisions were made.

On March 18, 1989, the initial Board met to pursue the application for tax exempt status. This Board elected as initial officers GF Konnetta P. Sparks, President and GF Yvonne Gandy, Secretary- Treasurer to serve until the first G.F.F. Inc. Board of Directors meeting. Articles of Incorporation and the Bylaws were accepted. A projected three- year budget needed for filing with the IRS was developed by GFs Yvonne Gandy, Konnetta Sparks, Cecile Springer and Helen Wright, dated May 27, 1988. This Committee recommended that no scholarship be awarded until the Fund had acquired \$ 50,000. President Sparks signed the IRS "Application for Recognition of Exemption Under 501© (3) of the Internal Revenue Code" on behalf of the G.F.F., Inc. on March 20, 1989.

The first meeting of the newly elected Board of Directors, of the G.F.F. Inc. occurred at the Peabody Hotel in Memphis Texas on May 27, 1989 and was convened by interim President, Konnetta Sparks. Upon her election as the first president of the G.F.F. Inc., GF Chrystine Shack assumed the presidential role and proceeded with the meeting. Other initial officers were GF Margaret Bush Wilson, Vice President; GF Cecile Springer, Secretary, and GF Lucille Blondin, Treasurer. The first Directors were: GF's Paquita Attaway, Mae Johnson, Rebecca Kingslow, Irma Roy, Margaret Rucker, Chrystine Shack, Cecile Springer, Margaret Bush Wilson, Joan Sessoms Ford and Konnetta P. Sparks, ex-officio. Revised Bylaws, reviewed and commented upon by the

## HISTORY OF THE GIRL FRIENDS FUND, INC.

Board and the membership, were approved on May 24, 1990 at the First Annual meeting in Orlando, Florida and signed by GF Chrystine Shack, President; GF Margaret Bush Wilson, Vice President; GF Cecile Springer, Secretary; and GF Joan Sessoms Ford, Legal Counsel. In 1991, at the Second Annual meeting in Williamsburg, Virginia, under the leadership of GF Chrystine Shack, it was definitively decided that a scholarship would not be granted by the G.F.F., Inc. until it had accumulated \$ 50,000. The first fundraiser of the G.F.F. was a Girl Friends Fund Wheel. This effort was a raffle spearheaded by G.F. Paquita Attaway. On May 27, 1992 at the Annual Meeting in Pittsburgh. GFs Rebecca Kingslow and GF Lucille Blondin presented the framework of the G.F.F. Inc. scholarship program to the Board, and the first scholarship was awarded in 1995 under the guidance of GF Florence Sharpless as Scholarship Chairperson.

The G.F.F. Inc. Endowment was established in 2002 during the administration of GF Esther Marioneaux for whom the Endowment was later named during the presidency of G.F. Lynda Carroll. GF Lynda Carroll was responsible for initiating the medallion and ceremony that we still use to recognize new donors. Also, through the beneficence of Girlfriends or their families, the G.F.F., Inc. has created five "named scholarships," called "Special Scholarship Distinctions," which are awarded annually.

The presidents of the G.F.F, Inc. have all spearheaded outstanding fundraising activities. Girl Friends who have served as G.F.F. Inc president are: Konnetta P. Sparks, who led the establishment of the G.F.F, Inc.; Chrystine Shack 1989-1992; Helen K. Wright 1992-1995; Miriam Shropshire 1995-2000; Esther C. Marioneaux 2000-2002; Lynda P. Carroll, 2002-2005; Phoebe A. Haddon, 2005-2007; Carole T. Phillips, 2007-2010; Elaine Effort, 2010-21012; Andrea L. Johnson, 2012-2013; Cynthia Carter Cole 2013-2015 and Cecelie B Henderson 2015-2017. Our present president is LaVerne N. Boyd.

(We gratefully acknowledge the Historical work of the 2017 History Committee: Co-Chairs GF Nina Jennings and GF Sheila J. Williams, the 2001 History of GF Cecile Springer, and the efforts of G.F. Lynne Bannister)

*GF Joan Sessoms Ford*

GF Joan Sessoms Ford

## PAST PRESIDENTS EMERITI THE GIRL FRIENDS FUND, INC.



Konnetta Sparks (New York)  
1989 (Interim)



Chrystine Shack (Memphis)\*  
1989 – 1992



Helen Keith Wright (Cleveland)  
1992 – 1995



Mirian C. Shropshire (Atlanta)  
1995 – 2000



Esther C. Marioneaux (Charlotte)  
2000 – 2002



Lynda Carroll (New Orleans)  
2002 – 2005



Phoebe A. Haddon (Philadelphia)  
2005 – 2007



Carole Temple Phillips (Brooklyn)  
2007 – 2010



Elaine Effort (Pittsburgh)  
2010 – 2012



Andrea L. Johnson (California)  
2012 – 2013



Cynthia Carter (Boston)  
2013 – 2015



Cecelia Henderson (Buffalo)  
2015 – 2017

\* Deceased

## INVESTMENT COMMITTEE

### Investment Committee Report *Thursday May 17, 2018* Girl Friends Conclave – Greenbrier Resort. West Virginia



GF LaShana B.  
Morris  
Durham  
Chair



GF Deborah  
Perry  
Pittsburgh



GF Annette  
VanDevere  
Atlanta

The Girl Friend Fund (GFF)'s Investments are professionally managed by Ameriprise Financial Services Incorporated (AFSI) in an Actively Diversified fund for Moderately Aggressive investors. The investment objective is to deliver growth of capital to investors. A few years ago, the GFF committee assessed the portfolios intent, future goals, risk tolerance, and time frame. We decided that with the advice of a manager with proven performance and expertise, we were willing to take more measured risk in order to achieve enhanced growth. Our portfolio's moderately aggressive allocation of 60% equities, 29% fixed income, 6% alternatives, 4.5% cash equivalents, and .5% other assets is now approximately, 67% equities, 20% fixed income 9% cash equivalents, and 4% alternative investments.

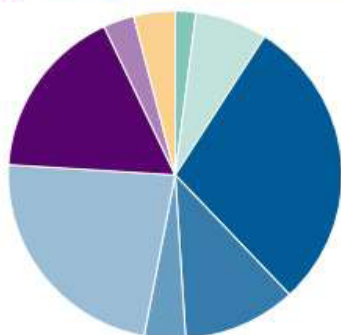
The GFF is invested in a fund of funds. Therefore, the portfolio is actively advised by an unaffiliated portfolio strategist, Wilshire Associates, Incorporated. (WAI) WAI advises AFSI in the best allocation for a portfolio with our profile. WAI has over 40 years of institutional experience and advises on a dynamic asset allocation, which over time, delivers consistent, risk-adjusted performance. It does not have discretionary authority nor control to purchase or sell assets or make other Investments. It merely provides portfolio allocation strategies and fund management.

AFSI is a professional money manager that manages the GFF funds in a diversified portfolio incurring reasonable risk in efforts to achieve incremental outperformance for long-term investors. It uses two key Solutions: 1) Asset Allocation and 2) Mutual Fund selection. Quarterly, the asset allocation is reviewed and revised as needed to maximize our potential returns given our risk tolerance. Mutual funds are selected based on the asset allocation targets and are monitor to ascertain that the fund is investing in the expected asset class and delivering competitive long-term performance. When a fund does not meet expectations, the fund is replaced. Last year, we paid fees of approximately 1% of the portfolio. **As of April 30th 2018, the current GFF portfolio was valued at \$286,862.53, up ~8% from last year's value of \$265,875.90.** The portfolio manager reports the following allocation:



## FIRST QUARTER 2017 PORTFOLIO ALLOCATION

## Asset Allocation



Asset Class	03/31/18	12/31/17	Qtr Change
Cash	2.00%	2.00%	0.00%
Cash Investments	7.00%	4.00%	3.00%
<b>Cash total</b>	<b>9.00%</b>	<b>6.00%</b>	<b>3.00%</b>
U.S. Large Cap	29.00%	28.00%	1.00%
U.S. Mid Cap	11.00%	12.00%	-1.00%
U.S. Small Cap	4.00%	5.00%	-1.00%
Foreign Equity	23.00%	20.00%	3.00%
<b>Equity total</b>	<b>67.00%</b>	<b>65.00%</b>	<b>2.00%</b>
Core Fixed Income	17.00%	17.00%	0.00%
Non-Core Fixed Income	3.00%	5.00%	-2.00%
<b>Fixed Income total</b>	<b>20.00%</b>	<b>22.00%</b>	<b>-2.00%</b>
Alternative Strategies	4.00%	7.00%	-3.00%
<b>Alternatives total</b>	<b>4.00%</b>	<b>7.00%</b>	<b>-3.00%</b>
<b>Total</b>	<b>100.00%</b>	<b>100.00%</b>	

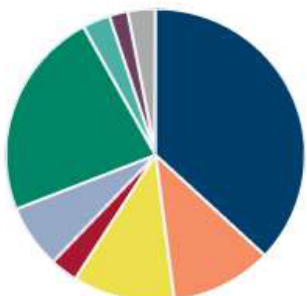
## Investment Strategy

The Active Diversified Funds Moderate Aggressive portfolio is diversified across multiple asset classes and investment styles using active mutual funds and passive ETFs. Wilshire Funds Management, a division of Wilshire Associates, leverages three key mechanisms in the management of these investment solutions:

1. **Asset allocation targets** are reviewed on a quarterly basis to maximize the return potential relative to the given level of risk taken. Any allocation changes will be made during a quarterly reallocation process.
2. **Dynamic asset allocation** tilts are driven by near-term capital markets views made by Wilshire Funds Management. Senior members of the Wilshire Funds Management investment team meet formally on at least a quarterly basis to evaluate economic and market data and research to develop the Firm's intermediate-term, forward-looking views.
3. **Investment selections** are monitored on an ongoing basis to ensure that each position is contributing the correct stylistic exposure, generating competitive long-term performance, and remaining consistent with its management process. In situations where a holding is not meeting Wilshire's expectations, action is taken to replace the position with a higher conviction alternative.

## FIRST QUARTER 2018 PORTFOLIO ALLOCATION

## Portfolio Allocations



Asset Class	03/31/17	12/31/16	Qtr Change
U.S. Large Cap Equities	37.00%	37.00%	0.00%
U.S. Small & Mid-Cap Equities	11.00%	11.00%	0.00%
International Developed Equities	11.00%	11.00%	0.00%
Emerging Market Equities	3.00%	3.00%	0.00%
High Yield Bonds	7.00%	7.00%	0.00%
U.S. Core Taxable Bonds	23.00%	21.00%	2.00%
Alternatives	3.00%	3.00%	0.00%
Cash	2.00%	2.00%	0.00%
Non-traditional Bonds	3.00%	5.00%	-2.00%

## Allocation Rationale

Given the targeted risk level of the moderate aggressive portfolio, 48% of the portfolio is invested in U.S. equities, 14% is invested in non-U.S. equities and 35% is invested in fixed income. This quarter Wilshire made no broad asset class changes.

The U.S. equity market had another strong quarter due to continued economic growth and consequent earnings growth. The newly elected administration and the associated hopes for regulatory reforms, tax cuts and increased public spending has led the rally among the domestic equity markets. Sector performance varied in the first quarter with the Information Technology and Health Care sectors leading the pack while the Energy and Telecom Services sectors struggled. Developed and emerging foreign markets also posted strong returns for the quarter. The weakening U.S. dollar also provided additional value for U.S. investors holding foreign securities. Rates changed little during the quarter with the 10-year U.S. Treasury Yield declining 0.05 percentage points, ending at 2.40%. For the second time in three months, the Federal Reserve increased the federal fund rate by 0.25% amid increased confidence in economic growth.

Through allocations to seven U.S. mutual funds and four non-U.S. mutual funds and ETFs, the portfolio is well-diversified across the growth and value styles. This quarter Wilshire introduced a 3% allocation to iShares MSCI Europe, Australasia and Far East (EAFE) Value ETF. Wilshire also decreased the allocation to MFS International Value Fund by 2% and decreased the allocation to Oppenheimer International Growth Fund by 1%.

The portfolio's fixed income allocations are diversified across a broad range of exposures including core bonds, high yield bonds and non-traditional bonds. This quarter Wilshire increased the allocation to the Multi-Manager Total Return Bond Strategies Fund by 2% and decreased the allocation to the BlackRock Strategic Income Opportunities Fund by 2%.



GF Nedra  
Starling  
Cleveland

## Secretary Year End Report 2017-2018

### *Annual Meeting - May 17, 2018*

At the start of our year, July, 2017, in the girl friendly spirit of cooperation all Board members and Committee Chairs were asked to comply with the following guidelines. Doing so assisted in getting all reports out to all Board members and Committee Chairs in a timely fashion and recording our meetings, deliberations and outcomes accurately. All were thanked in advance for cooperation.

#### 1. Submission of monthly reports for distribution:

NO LATER THAN the Thursday prior to that month's call meeting to assist in getting them compiled and distributed to everyone in a timely fashion for review before the scheduled call meeting.

#### Thursday Submission Dates for Reports – by 10pm EST:

September 7, 2017	October 5, 2017
November 9, 2017	December 7, 2017
January 4, 2018	February 8, 2018
March 8, 2018	April 5, 2018
May 3, 2018	June 7, 2018

All submitted reports were combined into a single PDF file for email distribution prior to the conference call date. Included reports appeared in the order as listed on the published agenda. The published agenda for the meeting was always the first item in the file.

Those planning on giving a report, and especially if the report included items or recommendations requiring a vote, were asked to send in either WORD or EXCEL by the stated due date to the Board Secretary - [starlin@ccf.org](mailto:starlin@ccf.org)

Those planning on giving a verbal update or comments only (do not have a written report to include for that month's call meeting) and DO NOT require any voting action were asked to respond to the reminder email from the Board Secretary - [starlin@ccf.org](mailto:starlin@ccf.org) with that information so we were not waiting to receive a report that would not be forthcoming.

#### Tuesday Board Conference Call Dates – 9pm EST:

September 12, 2017	October 10, 2017
November 14, 2017	December 12, 2017
January 9, 2018	February 13, 2018
March 13, 2018	April 10, 2018
May 8, 2018	June 12, 2018

#### 2. Board Meeting Meditations:

GFs honoring us with meditations at the start of our Board calls were asked to please send the Board Secretary a copy via email of their meditation for inclusion in the minutes.

#### 3. Rules of the Road:

To be courteous to all of us, all Board members and Committee Chairs were asked to keep in mind these "Rules of the Road" for conference call protocol during our monthly conference calls. Conference call protocol was in effect on all calls in order to have productive and timely meetings.



## **“Rules of the Road” for Conference Call Protocol:**

- Please be prompt in calling in and joining the conference call.
- If you are arriving on the call after the scheduled time – do not immediately announce yourself. Please wait for the end of the current presentation and respond when requested by either the President or Secretary.
- Once the roll call is complete, if you are participating via your cell phone, please mute your cell phone to prevent the intrusion of background noise and possible static. In the spirit of GF courtesy, please turn off your TV, music or any other sounds to prevent the intrusion of background noise (including other individuals’ background conversations) during times you unmute to make a comment.
- If you are participating via your land line please turn off your TV, music or any other sounds to prevent the intrusion of background noise (including other individuals’ background conversations).
- When making a comment, to contribute to the discussion, please state your name so it can be recorded as part of the official minutes.

## **4. Distributed to each Board member:**

- Full listing of our scheduled Board conference calls with call-in number and access code listed at the bottom. Report submission dates are also listed.
- Board directory (with photos) listing contact information – name, US mailing address, phone number(s) and email address(es). Also included committee chairs, and President Emeriti.
- Blank sheet as a word document with our GFF logo in upper left corner to use (if you wish) when formulating your reports. Logo can also be cut & pasted into Excel documents.

## **Updating of all Emails for Girl Friends®, Inc. Executive Committee, Advisory Board, Chapter Presidents, GFF Chapter Liaisons, and Girl Friends®, Inc. Membership:**

A list of emails for all GF Inc. Executive Committee, Advisory Board, Chapter Presidents, Chapter Treasurers and GFF Chapter Liaisons for 2017 – 2018 was compiled and updated. A list of emails for all GF Inc. Membership for 2017 – 2018 received from The Girl Friends, Inc. National Secretary is currently being used.

## **Notices sent to GFF Board and Committee Chairs:**

Sent the following notices/information to all Girl Friends Fund, Inc. Board members and Committee Chairs:

- o 2017-2018 Fall/Winter Newsletter; 2017-2018 Spring/Summer Newsletter
- o Scholarship Luncheon and Silent Auction updates (including Chapter Bid Sheets and request for volunteers) and reminders
- o Request for volunteers for Scholarship Luncheon and Silent Auction activities in The Greenbrier
- o 2018 Eunice Shreeves Scholarship Luncheon flier and ticket order form and reminders
- o Fund Raising Drive and Chapter Challenge & Member Challenge Fund Raising Drive information with Donor forms (Girl Friend and non-Girl Friend sources) and reminders
- o Special Projects Fund Raising – Bracelet information and reminders
- o Fund Raising – Barnes & Noble Book Fair information and reminders

## SECRETARY

- o 2018 Scholarship Application information including application and Liaison Information Sheet
- o 2018 Scholarship Application Liaison Training information and schedule
- o Reminder about Scholarship Training Sessions
- o Scholarship Training video information and electronic link
- o Forms – Nomination for Members of the GFF Board of Directors
- o Information and link about reserving hotel room for 2018 The Greenbrier Conclave
- o Monthly call meeting notices and documents
- o Letter requesting nomination/support of The Girl Friends Fund, Inc. as the Girl Friends®, Inc. National Project
- o Courtesy messages regarding events and life changes of Board members and Committee Chairs

### **Notices sent to Girl Friends®, Inc. Executive Board and Advisory Board:**

Sent the following notices/information to all Girl Friends®, Inc. Executive Board and Advisory Board:

- o Request for updated listing of National Officers, Advisory Board members, Chapter Presidents and Treasurers (to include names, chapters and contact email)
- o Request for full listing of The Girl Friends, Inc. membership
- o 2017-2018 Fall/Winter Newsletter; 2017-2018 Spring/Summer Newsletter
- o Scholarship Luncheon and Silent Auction updates (including Chapter Bid Sheets and request for volunteers) and reminders
- o Request for volunteers for Scholarship Luncheon and Silent Auction activities in The Greenbrier
- o 2018 Eunice Shreeves Scholarship Luncheon flier and ticket order form and reminders
- o Fund Raising Drive and Chapter Challenge & Member Challenge Fund Raising Drive information with Donor forms (Girl Friend and non-Girl Friend sources) and reminders
- o Special Projects Fund Raising – Bracelet information and reminders
- o Fund Raising – Barnes & Noble Book Fair information and reminders
- o 2018 Scholarship Application information including application and Liaison Information Sheet

### **Notices sent to Girl Friends®, Inc. Chapter Presidents and Liaisons:**

Sent the following notices/information to all Girl Friends®, Inc. chapter presidents and liaisons:

- o 2017-2018 Fall/Winter Newsletter; 2017-2018 Spring/Summer Newsletter
- o Scholarship Luncheon and Silent Auction updates (including Chapter Bid Sheets and request for volunteers) and reminders
- o Request for volunteers for Scholarship Luncheon and Silent Auction activities in The Greenbrier
- o 2018 Eunice Shreeves Scholarship Luncheon flier and ticket order form and reminders

- o Fund Raising Drive and Chapter Challenge & Member Challenge Fund Raising Drive information with Donor forms (Girl Friend and non-Girl Friend sources) and reminders
- o Special Projects Fund Raising – Bracelet information and reminders
- o Fund Raising – Barnes & Noble Book Fair information and reminders
- o 2018 Scholarship Application information including application and Liaison Information Sheet
- o 2018 Scholarship Application Liaison Training information and schedule
- o Reminder about Scholarship Training Sessions
- o Scholarship Training video information and electronic link
- o Forms – Nomination for Members of the GFF Board of Directors
- o Letter requesting nomination and support of The Girl Friends Fund, Inc. as the Girl Friends®, Inc. National Project

### Notices sent to The Girl Friends®, Inc. Membership:

Sent the following notices/information to all Girl Friends®, Inc. members:

- o 2017-2018 Fall/Winter Newsletter; 2017-2018 Spring/Summer Newsletter
- o Scholarship Luncheon and Silent Auction updates (including Chapter Bid Sheets and request for volunteers) and reminders
- o Request for volunteers for Scholarship Luncheon and Silent Auction activities in The Greenbrier
- o 2018 Eunice Shreeves Scholarship Luncheon flier and ticket order form and reminders
- o Fund Raising Drive and Chapter Challenge & Member Challenge Fund Raising Drive information with Donor forms (Girl Friend and non-Girl Friend sources) and reminders
- o Special Projects Fund Raising – Bracelet information and reminders
- o Fund Raising – Barnes & Noble Book Fair information and reminders
- o 2018 Scholarship Application information including application and Liaison Information Sheet
- o 2018 Scholarship Application Liaison Training information and schedule
- o Reminder about Scholarship Training Sessions
- o Scholarship Training video information and electronic link
- o Forms – Nomination for Members of the GFF Board of Directors

Respectfully Submitted



GF Nedra Starling  
Cleveland Chapter

## ASSISTANT SECRETARY



### Assistant Secretary Report 2017-2018

*April 10, 2018*

#### End of the Year Report

Dear Girl Friends Fund Members,

It has been my pleasure to serve as your Assistant Secretary for the last year under the leadership of Girl Friend Fund President LaVerne Nichols Boyd. The duties and responsibilities of my role are to acknowledge, thank, and provide necessary information to GFF donors for all donations to the Fund.

GF Shuana  
Tucker-Sims  
New Haven

As of today's date, I am pleased to share the following:

- A total of 93 acknowledgement letters have been sent to individual donors, chapters and supporting entities with accurate tax reporting information
- In collaboration with GF Annette VanDevere, Financial Secretary, my goal has been to respond to all donations within 5-7 business days
- It has also been my responsibility to include proper acknowledgements in letters when a donation is in support of a Girl Friend, chapter contribution or in memory of a loved one.
- A monthly report is provided to the Board of Directors of the Girl Friends Fund, Inc.

I would like to express my sincere gratitude to the Executive Board for their ongoing collaboration and support, and to our many contributors of the Girl Friends Fund, Incorporated.

In Service & Girl Friendship,

*GF Shuana Tucker-Sims*

GF Shuana Tucker-Sims



GF Annette R.  
VanDevere  
Atlanta

### Financial Secretary Report

*April 11, 2018*

#### Girl Friends Conclave

Dear Members of the Girl Friends Fund,

Thank you for allowing me to serve as your Financial Secretary for this past year under the leadership of Girl Friends Fund President LaVerne Nichols Boyd. My duties are to receive monies for deposit directly from any source on behalf of the Girl Friends Fund. In addition, my duties are to provide the Board of Directors and to the body an accounting of all monies collected by the Girl Friends Fund.

In collaboration with GF Shuana Tucker-Sims, Assistant Secretary, the objective was to provide her with the necessary information for acknowledgement of donations within 5 business days.

Donations can be made to one of our named scholarships to assist our scholars. They are the GF Carolyn M. Carter Memorial Scholarship; GF Gwendolyn G. Johnson Scholarship and the GF Carole Temple Phillips Scholarship. We also have the Esther C. Marioneaux Endowment Fund, which began with the intention of ultimately providing a constant revenue stream for Girl Friends Fund scholarships.

Girl Friends are also able to honor each other as a sign of friendship and memorialize friends and family members who have passed away to benefit The Fund.

Please know that I am so appreciative of the warm support that the Executive Board has provided during my tenure. It is truly wonderful to have so many contributors to the Girl Friends Fund, Incorporated. This generosity is what fuels, "Bringing Dreams to Life".

With Girl Friendly Appreciation,

*GF Annette R. VanDevere*

GF Annette R. VanDevere

# FINANCIAL SECRETARY ANNUAL INCOME REPORT

## Annual Income Report

By Category

July 1, 2017 – April 30, 2018

*GF Annette VanDevere, Financial Secretary*

General Scholarships	\$56,554.17
Esther Marioneaux Endowment Fund	\$ 8,050.00
Anita P. Gilger Trust Fund	\$16,250.00
Carolyn Carter Scholarship Fund	\$ 150.00
G.G. Johnson Scholarship Fund	\$ 2,850.00
Carol Phillips Scholarship Fund	\$ 250.00
Eunice Shreeves Scholarship Luncheon	\$11,615.00
Silent Auction	\$ 500.00
Girl Friends Bracelets	\$ 1,628.00
Girl Friends Fascinators	\$ 120.00
<b>GRAND TOTAL</b>	<b>\$ 97,967.17</b>

## Annual Income Report

July 1, 2017 – April 30, 2018

*GF Annette VanDevere, Financial Secretary*

July 2017	\$ 0.00
August 2017	\$ 0.00
September 2017	\$ 1,000.00
October 2017	\$ 500.00
November 2017	\$ 0.00
December 2017	\$34,180.17
January 2018	\$ 7,700.00
February 2018	\$ 6,585.00
March 2018	\$19,100.00
April 2018	\$28,900.00
<b>GRAND TOTAL</b>	<b>\$ 97,967.17</b>

*\*Please note that some months do not reflect online donations.*

# TREASURER



GF Deborah  
Perry  
Pittsburgh

## ANNUAL TREASURER'S REPORT

### GIRLFRIENDS FUND, INC.

BEGINNING BALANCE	Checking OPERATING	Savings COMMITTED	Savings RESTRICTED	Savings ENDOWMENT	BANK OF AMERICA	AMERIPRISE INVESTMENTS
	#1897	#0753	#4450	#0458	\$ 212,603.00	\$ 265,876.00
	\$ 134,350.00	\$ 69,870.00	\$ 2,502.00	\$ 5,881.00		
FISCAL YEAR 2017-2018 INCOME						
MONTHLY INCOME					FY 2017- 2018	FY 2017-2018
Jul	\$ -	\$ 3.00	\$ -	\$ -	\$ 3.00	\$ -
Aug	\$ 8.00	\$ 3.00	\$ -	\$ -	\$ 11.00	\$ -
*Sep	\$8,525.00	\$ 3.00	\$ -	\$ -	\$ 8,528.00	\$ -
Oct	\$ 500.00	\$ 3.00	\$ -	\$ -	\$ 503.00	\$ -
Nov	\$ -	\$ 3.00	\$ -	\$ -	\$ 3.00	\$ -
Dec	\$ 34,180.00	\$ 3.00	\$ -	\$ -	\$ 34,183.00	\$ -
Jan	\$ 7,700.00	\$ 3.00	\$ -	\$ -	\$ 7,703.00	\$ -
Feb	\$ 6,585.00	\$ 3.00	\$ -	\$ -	\$ 6,588.00	\$ -
Mar	\$ 19,100.00	\$ 3.00	\$ -	\$ -	\$ 19,103.00	\$ -
Apr	\$ 28,900.00	\$ 3.00			\$ 28,903.00	\$ -
May	TBD				\$ -	\$ -
Jun	TBD				\$ -	\$ -
Interest		\$ 30.00	\$ 1.00	\$ 2.00	\$ 33.00	\$ 20,987.00
**Income Totals as of April 30th	\$ 105,498.00	\$ 30.00	\$ 1.00	\$ 2.00	\$ 105,531.00	\$286,863
FISCAL YEAR 2017-2018 EXPENSES						
MONTHLY EXPENSES	OPERATING	COMMITTED	RESTRICTED	ENDOWMENT	FY 2017-2018	
Jul	\$ 524.00	-	-	-	\$ 524.00	
Aug	\$ 2,435.00	-	-	-	\$ 2,435.00	
Sep	\$ 28.00	-	-	-	\$ 28.00	
Oct	\$ 48,815.00	-	-	-	\$ 48,815.00	
Nov	\$ 1,610.00	-	-	-	\$ 1,610.00	
Dec	\$ 2,435.00	-	-	-	\$ 2,435.00	
Jan	\$ 986.00	-	-	-	\$ 986.00	
Feb	\$ 1,618.00	-	-	-	\$ 1,618.00	
Mar	\$ 3,126.00	-	-	-	\$ 3,126.00	
Apr	\$ 708.00	-	-	-	\$ 708.00	
May	TBD	-	-	-	\$ -	
Jun	TBD	-	-	-	\$ -	
Expense Totals as of April 30th	\$ (62,285.00)	-	-	-	\$ (62,285.00)	TOTAL NET ASSETS (BOA/AMPRSE)
ENDING BALANCES	\$ 177,563.00	\$ 69,900.00	\$ 2,503.00	\$ 5,883.00	\$ 255,849.00	\$542,712.00

\* September 2017 income includes BOA deposits (\$1000) plus Square Account income (\$7525) for a total deposit \$8525.00.

\*\* Income deposits in this report include bank and Internet deposits.

\*\*\* Board Proposal presented to transfer Endowment Funds (\$5883) and Square Deposit (\$7525) into the GFF Ameriprise Investment Account.

Respectfully Submitted,  
Deborah Perry, Treasurer 2018



## REPORT OF INTERNAL AUDIT COMMITTEE



GF Barbara  
Lord Watkins  
Dallas  
Chair

The Girl Friends Fund, Inc. (GFF) is a non-profit organization Incorporated in Texas in 1988 to help young African-American men and women realize their dream of an equal opportunity to a college education. The Girl Friends Fund is supported through donations from members and chapters of the affiliated/sister organization which is a separate non-profit organization and the general public.

On recommendation of the 2017 Audit Committee, and pursuant to GFF Bylaws, an independent certified public accounting firm was hired to perform the audit of Girl Friends Fund, Inc. financial records for the fiscal year June 1, 2016- June 30th 2017. The firm selected was Lori K. Orta, P.C. Certified Public Accountant. It is located in Dallas, Texas. Many of the recommendations made by last year's committee have been implemented including use of QuickBooks by a newly established assistant treasurer position; however, others will be completed moving forward.

In the auditor's opinion which is found in the Independent Auditor's report ".....the financial statements referred to above present fairly, in all material respects, the financial position of the Fund as of June 30, 2018 and the change in its net assets and its cash flows for the year ended in accordance with accounting principles generally accepted in the United States of America." The entire report is included in the 2018 Annual report.

I want to take this opportunity to express my sincere appreciation to Girl Friends Cecelia Henderson, LaVerne Boyd, Deborah Perry, Ann Walters-Pope and Annette VanDevere. These wonderful women spent numerous hours providing information and support to ensure the completion of the audit. It has been my pleasure and honor to once again serve as the Chair of the Girl Friends, Inc. Audit Committee.

Girl Friendly,

*GF Barbara Lord Watkins*

GF Barbara Lord Watkins



GF Sonya  
Goldboro  
Las Vegas



GF Annette  
VanDevere  
Atlanta

## Financial Statements and Independent Auditor's Report

*June 30, 2017*

We have audited the accompanying financial statements of The Girl Friends Fund, Inc. ("the Fund") (a nonprofit organization), which comprise the statement of financial position as of June 30, 2017, and the related statement of activities and changes in net assets, cash flows and functional expenses for the year then ended, and the related notes to the financial statements.

### Management's Responsibility for the Financial Statements

Management is responsible for the preparation and fair presentation of these financial statements in accordance with accounting principles generally accepted in the United States of America; this includes the design, implementation, and maintenance of internal control relevant to the preparation and fair presentation of financial statements that are free from material misstatement, whether due to fraud or error.

### Auditor's Responsibility

Our responsibility is to express an opinion on these financial statements based on our audit. We conducted our audit in accordance with auditing standards generally accepted in the United States of America. Those standards require that we plan and perform the audit to obtain reasonable assurance about whether the financial statements are free from material misstatement.

An audit involves performing procedures to obtain audit evidence about the amounts and disclosures in the financial statements. The procedures selected depend on the auditor's judgment, including the assessment of the risks of material misstatement of the financial statements, whether due to fraud or error. In making those risk assessments, the auditor considers internal control relevant to the entity's preparation and fair presentation of the financial statements in order to design audit procedures that are appropriate in the circumstances, but not for the purpose of expressing an opinion on the effectiveness of the entity's internal control. Accordingly, we express no such opinion. An audit also includes evaluating the appropriateness of accounting policies used and the reasonableness of significant accounting estimates made by management, as well as evaluating the overall presentation of the financial statements.

We believe that the audit evidence we have obtained is sufficient and appropriate to provide a basis for our audit opinion.

### Opinion

In our opinion, the financial statements referred to above present fairly, in all material respects, the financial position of the Fund as of June 30, 2017, and the change in its net assets and its cash flows for the year then ended in accordance with accounting principles generally accepted in the United States of America.

*Lori K. Orta, P.C.*

Lori K. Orta, P.C.  
Dallas, Texas  
March 13, 2018

The Girl Friend's Fund, Inc.  
Statement of Financial Position  
June 30, 2017

**ASSETS**

**CURRENT ASSETS**

Cash and cash equivalents	\$ 115,063
Cash and cash equivalents - temporarily restricted	\$ 109,761
Investments	\$ 266,261
Total current assets	\$ 491,085

<b>TOTAL ASSETS</b>	<b>\$ 491,085</b>
---------------------	-------------------

**LIABILITIES AND NET ASSETS**

**CURRENT LIABILITIES**

Accrued scholarships	\$ 18,000
Accrued expenses	\$ 4,870
Total current liabilities	\$ 22,870

**NET ASSETS**

Unrestricted net assets	
GFF Board designated	\$ 277,283
Undesignated	\$ 81,171
Total unrestricted net assets	\$ 358,454
Temporarily restricted net assets	\$ 109,761
Total net assets	\$ 468,215

<b>TOTAL LIABILITIES AND NET ASSETS</b>	<b>\$ 491,085</b>
---	-------------------

The Girl Friend's Fund, Inc.  
Statement of Activities and Changes in Net Assets  
June 30, 2017

SUPPORT AND REVENUES	Unrestricted	Temporarily Restricted	Total
Contributions	\$ 42,467	\$ 39,935	\$ 82,402
Investment income net of fees	\$ 28,578	-	\$ 28,578
Special events	\$ 29,874	-	\$ 29,874
Less: direct expenses	\$(19,135)	-	\$(19,135)
Net special events	\$ 10,739	-	\$ 10,739
Other income	\$ 382	-	\$ 382
Net assets released from restriction	\$ 55,500	\$ (55,500)	-
<b>Total support and revenues</b>	<b>\$137,666</b>	<b>\$ (15,565)</b>	<b>\$122,101</b>

The Girl Friend's Fund, Inc.  
Statement of Activities and Changes in Net Assets (cont'd)  
June 30, 2017

EXPENSES	Unrestricted	Temporarily Restricted	Total
Program Services	\$ 55,500	-	\$ 55,500
Supporting services			
Management and general	\$ 19,932	-	\$ 19,932
Fundraising	\$ 475	-	\$ 475
Total expenses	\$ 75,907	-	\$ 75,907
Changes in net assets	\$ 61,759	\$ (15,565)	\$ 46,194
NET ASSETS at beginning of year	\$296,695	\$ 125,326	\$422,021
NET ASSETS at end of year	\$358,454	\$ 109,761	\$468,215

The Girl Friend's Fund, Inc.  
Statement of Cash Flows  
For the Year Ended June 30, 2017

Cash flows from operating activities	
Changes in net assets	\$ 46,194
Adjustments to reconcile change in net assets to net cash provided by (used in) operating activities:	-
Unrealized gains on investments	\$ (27,684)
Change in operating assets and liabilities, net	
Accounts receivable	\$ 760
Accrued expenses	\$ 4,8704
Net cash provided by operating activities	\$ 24,140
Cash flows from investing activities	
Net acquisition of investments	\$ (14)
Net change in temporarily restricted cash and cash equivalents	\$ 15,565
Net cash provided by investing activities	\$ 15,551
Increase in cash and cash equivalents	\$ 39,691
Cash and cash equivalents at beginning of year	\$ 75,372
Cash and cash equivalents at end of year	\$ 115,063

The Girl Friend's Fund, Inc.  
Statement of Functional Expenses  
June 30, 2017

	Program Services	Management & General	Fundraising	Total Supporting Services	Total
Scholarship expense	\$ 55,500	\$ -	\$ -	\$ -	\$ 55,500
Professional fees	\$ -	\$ 5,605	\$ -	\$ 5,605	\$ 5,605
Printing & postage	\$ -	\$ 2,925	\$ 325	\$ 3,250	\$ 3,250
Board expenses	\$ -	\$ 1,403	\$ -	\$ 1,403	\$ 1,403
Website expense	\$ -	\$ 751	\$ -	\$ 751	\$ 751
Gifts	\$ -	\$ 502	\$ -	\$ 502	\$ 502
Other expenses	\$ -	\$ 252	\$ -	\$ 252	\$ 252
Insurance expense	\$ -	\$ 250	\$ -	\$ 250	\$ 250
Bank service fees	\$ -	\$ 244	\$ -	\$ 244	\$ 244
Advertising	\$ -	\$ -	\$ 150	\$ 150	\$ 150
Loss from fraudulent checks	\$ -	\$ 8,000	\$ -	\$ 8,000	\$ 8,000
	\$ 55,500	\$ 19,932	\$ 475	\$ 20,407	\$ 75,907

The Girl Friends Fund, Inc.

## Notes to Financial Statements

### SUMMARY OF SIGNIFICANT ACCOUNTING POLICIES

#### Nature of Business

The Girl Friends Fund, Inc. (the "Fund"), is a nonprofit organization incorporated under the laws of the state of Texas. The Fund was established in 1988 to support deserving African American students with financial assistance through scholarships. The Fund's primary mission is to assist graduating high school seniors with the opportunity to attend and remain in a college or university to further their educational goals. The Fund also assists seniors and juniors in college with the financial assistance to apply for medical school, prepare for admissions testing, and attend the requisite school interviews. The Fund is an organization of like-minded professional women whose members volunteer their time, expertise, talents and resources to help shape our communities leaders of tomorrow, believing in "Bringing Dreams to Life"....one scholar at a time. The Fund was designated as a 501(c)(3) entity in 1989.

Membership of the Fund consists of all active members in good standing of The Girl Friends, Inc. ("The GF, Inc."), one of the oldest social/civic organizations of African-Women women in the United States, established in 1927 and incorporated in 1938, with approximately 47 chapters to date across the country. Although the Annual Meeting of the Fund and its fundraising luncheon are held during the Conclave of the GF, Inc., the Fund is a separate entity and operates independently from The GF, Inc. as a public charity. Accordingly, the activities of The GF, Inc. are not included in the accompanying financial statements.

The Fund is supported mainly by donations, fundraising events, and the volunteer service of the GFF Board and members.

### Basis of Accounting

The accompanying financial statements have been prepared on the accrual basis of accounting in accordance with generally accepted accounting principles (GAAP) in the United States of America.

For reporting purposes, resources are classified into three net asset categories according to the existence or absence of donor-imposed restrictions. Accordingly, net assets of the Fund and changes therein are classified and reported as follows:

Unrestricted net assets - net assets that are not subject to donor-imposed stipulations. Unrestricted net assets may be designated for specific purposes by action of the GFF Board of Directors. See Note 5.

Temporarily restricted net assets - net assets subject to donor-imposed stipulations that may or will be met either by actions of the Fund and/or the passage of time. When a restriction expires, temporarily restricted net assets are reclassified to unrestricted net assets and reported in the statement of activities and changes in net assets as net assets released from restrictions.

Permanently restricted net assets - net assets subject to donor-imposed stipulations that they be maintained in perpetuity by the Fund. There were no permanently restricted net assets at June 30, 2017.

### Cash and Cash Equivalents

Cash and cash equivalents consist of cash on hand and all highly liquid investments purchased with an initial maturity of three months or less. The FDIC deposit insurance insures deposits, money markets accounts and certificates of deposit accounts up to \$250,000 per deposit, per insured bank for each ownership category. The Fund also holds cash and cash equivalents at Ameriprise Financial Services Company that is covered by FDIC insurance. There were no uninsured balances at June 30, 2017.

### Investments

The Fund carries investments in marketable securities with readily determinable fair values at their fair value in the accompanying statement of financial position. Fair values are based on quoted market prices. Income earned from investments, including unrealized gains and losses, is recorded in unrestricted net assets. Due to the level of risk associated with certain investment securities, it is possible that changes in the value of investment securities will occur in the near term, and that such changes could materially affect the amounts reported in the financial statements. Investments at June 30, 2017 are held and managed by Ameriprise Financial Services Company. See Note 2.

### Financial Instruments

The carrying value of cash and cash equivalents and accrued liabilities approximate fair value due to the short-term maturities of these assets and liabilities.

### Scholarships

Scholarships are recognized when the student recipients have been approved by the Fund and when scholarship terms have been met. See Note 3.

### Contributions

Contributions, including unconditional promises to give, are recognized in the period received. All contributions are available for unrestricted use unless specifically restricted by donor. Conditional promises to give are recognized when the conditions on which they depend are substantially met. Unconditional promises to give that are expected to be collected within one year are recorded at net realizable value.

### Contributed Goods and Services

Contributed services are reflected in the financial statements at the estimated fair value of the services

received if the services received (a) create or enhance nonfinancial assets or (b) require, and are provided by, individuals with specialized skills, and would typically need to be purchased if not provided by donation. Many individuals volunteer their time and perform a variety of tasks that help The Fund. Volunteer hours valued at approximately \$92,000 were not reflected in the financial statements for the year ended June 30, 2017. However, these volunteer services are necessary to meet the Fund's mission.

### Functional Allocation of Expenses

The costs of providing the various scholarships and supporting services have been summarized on a functional basis in the statement of activities and changes in net assets for the year ended June 30, 2017. Accordingly, certain costs have been allocated among the scholarships and supporting services benefited.

### Use of Estimates

The preparation of financial statements in conformity with accounting principles generally accepted in the United States of America requires management to make estimates and assumptions that affect the reported amounts of assets and liabilities and disclosure of contingent assets and liabilities at the date of the financial statements. Accordingly, actual results could differ from those estimates.

### Income Taxes

The Fund is exempt from federal income taxes under Section 501(c) (3) of the Internal Revenue Code. Accordingly, no provision for income taxes is reflected in the accompanying financial statements. The Fund has concluded that it does not have any unrecognized tax benefits resulting from the current or prior period tax positions. Accordingly, no additional disclosures have been made on the financial statements regarding ASC 740, Income Taxes. The Fund does not have any outstanding interest or penalties, and none have been recorded in the statement of activities and change in net assets for the year ended June 30, 2017. The Fund's informational returns filed are generally subject to examination for three years after the later of the due date or date of filing. As a result, the Fund is no longer subject to income tax examinations by tax authorities for years prior to 2014.

## INVESTMENTS

The Fund adopted ASC 820, Fair Value Measurements, ("ASC 820"), which requires enhanced disclosures about investments that are measured and reported at fair value. ASC 820 emphasizes that fair value is a market-based measurement, not an entity-specific measurement. Therefore, a fair value measurement should be determined based on the assumptions that market participants would use in pricing the asset or liability. As a basis for considering market participant assumptions in fair value measurements, ASC 820 establishes a three-tier hierarchy to distinguish between various types of inputs used in determining the value of the Guild's investments and liabilities. Level 1 hierarchy uses quoted prices (unadjusted) in active markets for identical assets and liabilities. Level 1 assets include publicly traded securities and mutual funds. Valuations of these instruments do not require a high degree of judgment as the valuations are based on quoted prices in active markets that are readily available. Level 2 hierarchy uses other quoted prices in markets that are not active or for which all significant inputs are not observable, either directly or indirectly. Level 3 hierarchy uses inputs that are unobservable and significant to the overall fair value measurement.

The following is a description of the valuation methodologies used for assets measured at fair value. There have been no changes to the methodologies used at June 30, 2017.

Mutual funds – valued at quoted market, which for commingled funds represent the net asset value of shares held by the Fund at year end.

Equities – valued at quoted market, which for commingled funds represent the net asset value of shares



held by the Fund at year end.

Investments consist of the following at June 30, 2017:

	Fair Value (Level 1)
Mutual funds	\$ 258,144
Equities	\$ 8,117
	<hr/> \$ 266,261

Investment income consist of the following at June 30, 2017:

Interest and dividends	\$ 4,863
Unrealized gain	\$ 27,684
Realized loss	\$ (1,555)
Investment management fees	<hr/> \$ (2,414)
	\$ 28,578

## SCHOLARSHIPS

The Fund annually awards scholarships to graduating high school seniors, nominated by local chapters of the Fund, who maintain an established grade point average and plan to attend an accredited four-year institution. Scholarships will be awarded for up to four years, providing the award recipient satisfies the renewal requirements, which include continued enrollment at an accredited four-year institution, class registration, maintenance of the required grade point average, and are dependent on availability of funds.

Expenses for the future renewal scholarship awards will be recognized over the next four years, following the verification that the scholarship conditions have been met by the selected recipients. A portion of the Fund's fiscal year 2018 scholarships of \$18,000 have met the conditions to be recognized have been recorded as a liability at June 30, 2017.

Expected future payments of renewal scholarship awards for selected recipients for the remaining term of the commitment is as follows at the year ended June 30, 2017:

Fiscal year 2018	\$ 43,500
Fiscal year 2019	\$ 52,500
Fiscal year 2020	\$ 36,000
Fiscal year 2021	<hr/> \$ 18,000
	\$ 150,000

## TEMPORARILY RESTRICTED NET ASSETS

Temporarily restricted net assets are donor restricted for the following purposes at June 30, 2017:

Scholarships	\$ 109,761
--------------	------------

Release from restrictions consisted of the following for the year ended June 30, 2017:

Scholarships	\$ 55,500
--------------	-----------

## GFF BOARD DESIGNATED ENDOWMENT

In 2002, the Fund established an endowment fund, which is to be used for scholarships. The scholarship endowment funds are held in a brokerage account and a bank savings account styled "scholarship endowment fund" and are reported as investments and cash and cash equivalents in the accompanying

financial statements. The Fund had the following GFF board designated endowment related activities for the year ended June 30, 2017:

GFF Board designated endowment beginning of year	\$ 248,703
Investment return	\$ 28,580
GFF Board designated endowment end of year	\$ 277,283

#### RELATED PARTIES

During the year ended June 30, 2017, the Fund was a national project recipient and received a donation of \$16,680 from The GF Inc., which is reported as contributions revenue and support in the accompanying financial statements.

#### CONCENTRATION

At June 30, 2017, one donor made a contribution which totaled approximately 13% of the total revenue.

#### LOSS FROM FRAUDULENT CHECKS

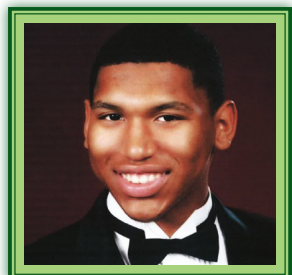
During the year ended June 30, 2017, two fraudulent checks were cashed totaling \$8,000. The Fund is pursuing all avenues in an attempt to recover the funds.

#### SUBSEQUENT EVENTS

In connection with the preparation of the financial statements, subsequent events have been evaluated by The Fund through March 13, 2018, which was the date the financial statements were available for issuance, and concluded that no additional disclosures are required.

*\*Loss event referred to occurred November 2016*

## SCHOLARSHIP RECIPIENTS 2018



David Barfield  
California  
Computer Science  
Stanford University



Chandler Calloway  
Roanoke  
Architectural Design  
Virginia Tech



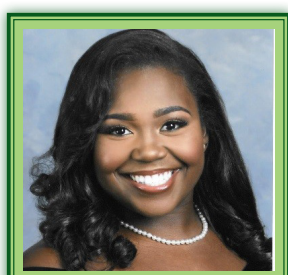
Chelsea Carter  
Louisville  
Creative Writing  
Howard University



Courtney Draper  
Toledo  
Organizational  
Leadership & Dance  
Wright State University



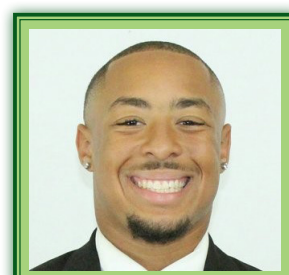
Slone Harris  
Cincinnati  
Bio-Chemistry  
Brown University



Jillian Jackson  
Memphis  
Business  
Administration  
Spelman College



Eva Logan  
Charlotte  
Mathematics  
University of North  
Carolina at Chapel Hill



Kahtrel Maynard  
San Diego  
Biology  
Brown University



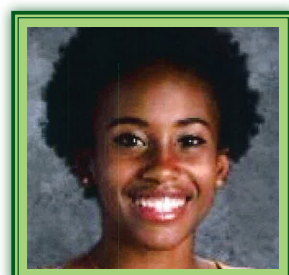
Breona Minefee  
Cleveland  
Human Development  
and Psychological  
Studies  
Emory University



Alice Royer  
Miami  
English/Pre-Law  
University of Florida



Takai Straw  
Orlando  
Public Relations  
Howard University



Imani Turner  
Columbus  
Exercise Science  
Ohio State University

# SCHOLARSHIP RECIPIENTS

## 1995 – 2017

1995 - Group 1  
 Rashunda Davis Cleveland  
 Shonda Feaster Philadelphia  
 Kayenda Johnson Baltimore  
 Arnita Moore Memphis

1996 - Group 2  
 Ayanna Lyles Fairfeild  
 Charissa Smith Trenton  
 Melanie Price California

1997 -Group 3  
 Kamela Kuntz New Jersey  
 Teresa Washington Detroit  
 Precious Williams St. Louis

1998 - Group 4  
 Forrestine Grisby Charlotte  
 Ty-Isha Jones Norfolk  
 LaTonia Monroe Springfield

1999 - Group 5  
 Idaceen Christian Memphis  
 Hillary Fowler Orlando  
 Deborah Minor Cleveland

2000 - Group 6  
 Marian McElvoy Baltimore  
 Geneene Thompson Columbia  
 Eric Russell Washington

2001 - Group 7  
 Lawanna Evans Dallas  
 Martine Joseph Miami  
 Michelle Robinson Pittsburgh  
 Charlene Talbot Orlando

2002 - Group 8  
 Jody Arshimene Trenton  
 Joy Bentley New Jersey  
 Jamille Lukes Albany  
 Krystal Reid Pittsburgh

Daniele Spears Fairfield County  
 2003 - Group 9  
 Precious Wilson Durham  
 Marie Porter Miami  
 Marquita Williams Columbus  
 Janis Galloway Norfolk

2004 - Group 10  
 Matthew Mackey Albany  
 Vereaux Reynolds Pittsburgh  
 Janelle Coleman Philadelphia  
 Zsa Zsa Booker Detroit  
 Brittany Paige Cleveland

2005 - Group 11  
 Fatimah Muhammad Cleveland  
 James Robinson Memphis  
 Ileshaah Murphy Buffalo  
 Brittany Clifton Columbia  
 Reiah Etwaroo New Jersey  
 Diane Melville Miami  
 Rachelle Jones Orlando  
 Cierra Witherspoon Columbus  
 Aisha Harris New Haven  
 Daniel DeVougas Milwaukee

2006 - Group 12  
 Sharla Berry California  
 La nesha Bridges Pittsburgh  
 Jessica Clinton Miami  
 Shauna Edwards Albany  
 Chavaughn Gibson Cleveland  
 Shellese Shemwell Louisville  
 Monica Soloman Orlando  
 Charrice White Memphis

2007 - Group 13  
 Ashley Bayton Potomac  
 Tiffany Graves Cleveland  
 Bennie Williams\* Buffalo  
 Melisa Douge Miami  
 Courtney Hubbard Orlando  
 Bianca Stinney Albany

## SCHOLARSHIP RECIPIENTS 1995 – 2017

Chanise Shepherd  
Trevorlyn Anderson

Louisville  
New York

### 2008 - Group 14

Shauna Bowes  
Adrian Caldwell  
Monique Fortune  
*GF Juanita P. Humphrey Scholar*  
Ashlie Graham  
Kelly Harper  
Diamond Haynes  
Briittany Sumner  
Briittany Wharry  
*Anita Peek Gilger, MD Trust Scholar*

Miami  
Greenville  
Philadelphia  
  
Buffalo  
Potomac  
Cleveland  
Norfolk  
Baltimore

### 2009 - Group 15

Ariel Brown  
Bailey Brown  
*GF Juanita P. Humphrey Scholar*  
Jennifer Collins  
Vanessa LeBon  
Noni Thomas  
*Anita Peek Gilger, MD Trust Scholar*  
Paige Tutt  
Monika Wiggins  
Melody Williams

Baltimore  
Fairfield County  
  
Cleveland  
Miami  
Dallas  
  
Albany  
Buffalo  
Orlando

### 2010 - Group 16

Arion Chapman  
Jeffeline Ermilus  
Shanise Edmond  
Timia Harris  
Leah Jones  
Chasidy Lowe  
Tershone Phillips  
Christien Russell  
Toni Walker-Stanley  
*GF Juanita P. Humphrey Scholar*  
Brendon Taylor  
*Anita Peek Gilger, MD Trust Scholar*  
Chelsea Walker  
Chelsea Zellar

Potomac  
Miami  
Buffalo  
Columbus  
Cleveland  
Baltimore  
Brooklyn  
Louisville  
Trenton  
  
Pittsburgh  
  
Greenville  
Albany

### 2011 - Group 17

Dafina Bobo  
Shanielle Carrington  
Myriam Diomande  
*Anita Peek Gilger, MD Trust Scholar*  
Linette Dulue\*  
Ariel Foster  
Natacha Jerome\*  
*GF Carole Temple Phillips Scholar*  
Veronica Johnson  
Jasmine Jones  
Lauren Larkin  
Briana Nelson  
*GF Juanita P. Humphrey Scholar*  
Stephanie Osborne  
Malena Price  
Maya Wilson

Minneapolis  
New Jersey  
Albany  
  
New Haven  
Miami  
Orlando  
  
Louisville  
Roanoke  
Cleveland  
Seattle  
  
Chicago  
Brooklyn  
Baltimore

### 2012 - Group 18

Denisha Ivanna Bennett  
Jordan Alexander Canedy  
Sha Ron DeBerry  
Bria Green  
*Anita Peek Gilger, MD Trust Scholar*  
Nije Johnson  
Taylor Gaines Johnson  
Vanessa Marshall  
Raechel Mattison  
Quishaun Murden  
Diamond Pollard  
Shelby Smith  
Bria White  
Edward Taylor  
*GF Juanita P. Humphrey Scholar*

Miami  
Cleveland  
Potomac  
Buffalo  
  
Pittsburgh  
Seattle  
Columbia  
Baltimore  
Trenton  
Roanoke  
Albany  
New Haven  
Houston

### 2013 – Group 19

La Darria Arnold  
*GF Juanita P. Humphrey Scholar*  
Sydney Miray Harper  
Brytney Taylor Humphries  
Naima Rene Lamb  
Jeremy Austin Ledbetter  
Delenn Marie Lloyd-Latif  
Judny Louis

Dallas  
  
Potomac  
Pittsburgh  
California  
Roanoke  
Albany  
Miami

*\*Denotes a one time additional award*

# SCHOLARSHIP RECIPIENTS 1995 – 2017

Jermaine Medley  
Monique Danielle Smith  
Andre Scruggs  
Jasmine Monique Terry  
Adam Williams  
Amanda Honeywell  
*Anita Peek Gilger, MD Trust Scholar*

Orlando  
Seattle  
Louisville  
Cincinnati  
Cleveland  
Brooklyn

## GF Gwendolyn G. Johnson Scholars

Christopher Alexander Berry  
Ashleigh Bobbitt  
Nia Coffey  
Morgan Samantha Frances  
Terah Teresea Gamble  
Monique Christine McBride  
Taylor Grace McKinnon  
Kaila Natasha Williams

Las Vegas  
New Jersey  
Minneapolis/ St. Paul  
Trenton  
Greenville  
Buffalo  
Boston  
Baltimore

## 2014 – Group 20

Christopher Adams  
*GF Juanita P. Humphrey Scholar*  
Tyler Ambrose  
Joslyn Barnett  
*Anita Peek Gilger, MD Trust Scholar*  
Katelyn Bynoe  
*Gwendolyn G. Johnson Scholar*  
AnneLiza Carey  
*Gwendolyn G. Johnson Scholar*  
Anyah Hall

Seattle  
Roanoke  
Cleveland  
Boston  
Trenton  
Miami

## 2015 – Group 21

Sharmar Ballard  
*GF Carolyn M. Carter Scholar*  
William Blanton  
Sierra Brown  
*GF Gwendolyn G. Johnson Scholar*  
Colasia Claxton  
*GF Carole Temple Phillips Scholar*  
Jada Irving  
*GF Carolyn M. Carter Scholar*  
Brielle Jackson  
*GF Carolyn M. Carter Scholar*

Norfolk  
Louisville  
Roanoke  
New Haven  
San Diego  
Cleveland

Emerson Celeste Kearney  
*GF Carolyn M. Carter Scholar*  
Tyra Searcy  
*GF Gwendolyn G. Johnson Scholar*  
Taylor Thurman  
*GF Juanita Humphries Scholar*  
Ronniko Williams  
*Anita Peek Gilger Scholar*

Cincinnati  
St. Louis  
New Jersey  
Miami

## 2016 – Group 22

Cedrica Anderson  
Loren Carmichael  
*Humphrey Scholar*  
Tyler Coleman  
Alexis Cushshon  
*Gwendolyn G. Johnson*  
Alexa Eason  
J'Sharre Gamblin  
*Carolyn Carter*  
Jabril King-Mahdi  
Cara Pannell  
Paula Salvant  
*Anita Peek Gilger*  
Roxanne Saunders  
Curtis Tarik Staples  
*Carole Temple Phillips*  
Mia Thompson

Columbus  
Memphis  
Pittsburgh  
St. Louis  
New Haven  
Buffalo  
San Diego  
Cleveland  
New Jersey  
Miami  
Roanoke  
Louisville

## 2017 – Group 23

Ndidi Anekwe  
Janae Boyd  
Treniya Bronaugh  
Lauren Brown  
Ti'Ara Clark  
Zoe Collier Robinson  
Nicholas Gilliard  
Lauren Hamilton  
Allen Shelton  
Steven Thomas II  
Allexus Wooden  
Jadzia Young

Fairfield County  
Louisville  
Pittsburgh  
Roanoke  
Dallas  
St. Louis  
Columbia  
Cleveland  
Las Vegas  
Toledo  
Miami  
Orlando





### GF Carolyn M. Carter Memorial Scholarship

The GF Carolyn M. Carter Memorial Scholarship was established in 2013 to support the undergraduate education of scholarly, high school graduates, particularly those with an interest in STEM. The \$1,500 award is renewable annually for up to four years. The award is also available to college juniors and/or seniors, in which case, \$3,000 may be awarded specifically to support their application to medical school. When awarded to juniors, it is renewable for one year. The scholarship was established by her daughter, GF Cindy Carter Cole.



### Anita Peek Gilger, MD Trust

A 1941 graduate of The Johns Hopkins College of Medicine, Dr. Gilger, a Florida native, was a philanthropist and lover of the arts. She understood the challenges faced by low income students and ensured that they were among her beneficiaries. She named her friend, GF Helen Keith Wright (Cleveland), as one of her Trustees. Her Trust has been a significant donor to the GFF. In 2008, the Board of Directors established a scholarship in her name.



### GF Juanita P. Humphrey

The GF Juanita P. Humphrey Scholarship was established in 2008 as the result of a donation from her estate. This was the largest one time donation received by the GFF. GF Juanita was a Life Member of the New Jersey Chapter of The Girl Friends®, Inc. She was a selfless mentor to many who benefitted significantly from the many talents she acquired in the span of 96 years.

This award is presented to a student who has outstanding accomplishments and involvement in community activities as well as academic achievement.



### GF Gwendolyn G. Johnson

The GF Gwendolyn G. Johnson Scholarship was established in 2013 by immediate Past President of The GFF, GF Andrea L. Johnson, in honor of her mother. The one-time \$1,000 award is granted to a high school graduate who has been accepted to a four-year institution and meets the additional criteria consistent with the GFF General Scholarship.



### GF Carole Temple Phillips

The GF Carole Temple Phillips Scholarship was established by the Board of Directors in 2010 as a one time \$1,000 award to commemorate the legacy of GF Carole's stalwart commitment to The Fund as its Leader. As a demonstration of her ongoing commitment to The Fund and its mission, in 2014 GF Carole converted this to a recurring scholarship.



# SCHOLARSHIP COMMITTEE



GF Fawn Robinson  
Pittsburgh  
Chair

## The Girl Friends Fund, Inc. Scholarship Committee 2018 Annual Report

Greetings from The Girl Friends Fund, Inc. Scholarship Committee:

Girl Friends Fund Scholarship Committee was pleased to provide opportunities for Girlfriends across the country to support student success through the Girl Friend Fund, Inc. The Scholarship Committee was tasked to organize and execute the 2017-2018 Scholarship Cycle and Scholars Renewal Process. The 2017-2018 Scholarship committee members are:

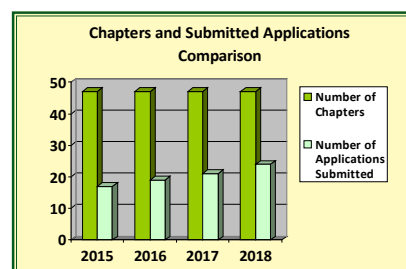
GF Melissa Archer (Buffalo)  
GF Marie Bush (Toledo)  
GF Marcella Cox (Cleveland)

GF Sheilah Shaw Horton (Baltimore)  
GF Ericka Newsome-Hill (Atlanta)  
GF Nedra Starling (Cleveland)

For the 2017-2018 Scholarship Cycle, the application process moved to online submissions through the Girl Friends Fund website. The Girl Friends Chapters worked with local high schools to collect scholarship applications and selected one scholar candidate to submit to The Girl Friends Fund. All Chapter Presidents and Chapter Liaisons received the Chapter Liaison instructions and Scholarship Application by email starting in November 2017 which was a month early then the previous semester. The submission training sessions were attended by Chapter Presidents, Chapter Liaisons, Scholarship Chairs, Scholarship Mentor, and Chapter Members. Thirty- two Girlfriends registered for the scholarship trainings and a recording of the training was sent by email to the registered training attendees in addition to all Chapter Presidents and Chapter Liaisons.

With the *March 1st* deadline, the Scholarship Committee received 24 applications for the GF Chapters which was an increase of three applications (12.5%) from the 2017 cycle. This is the third consecutive year, the Scholarship committee has seen an increase in scholarship applications.

The GF Chapters made it difficult for the scholarship reviewers, by submitting an incredible group of young scholars with amazing academic achievements, leadership initiatives, and service commitments. Thank you to the **Scholarship Reviewers**, GF Casma Huie (Potomac), GF Nina Jennings (Seattle), and GF Scyla Murray Baielli (Chicago), GF Beverly Parks Lloyd (Atlanta), and Roslyn Thibodeaux Goodall (Dallas) for reading, reviewing, and rating each application. The scores from each reviewer were tailed and combined together. A final list of the scores was submitted to The Fund Board for review.



The following 24 chapters submitted a Scholarship Application for the 2018 Scholarship Cycle:

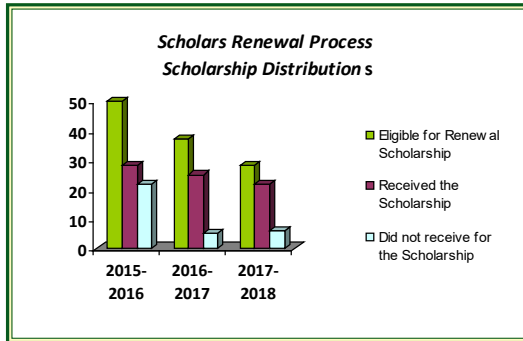
Buffalo Chapter  
California Chapter  
Charlotte Chapter  
Cincinnati Chapter  
Cleveland Chapter  
Columbus Chapter  
Detroit Chapter  
Durham Chapter

Fairfield County Chapter  
Las Vegas Chapter  
Louisville Chapter  
Memphis Chapter  
Miami Chapter  
New Haven Chapter  
New Jersey Chapter  
Orlando Chapter

Pittsburgh Chapter  
Roanoke Chapter  
San Diego Chapter  
Springfield Chapter  
St. Louis Chapter  
Toledo Chapter  
Trenton Chapter  
Washington Chapter

## SCHOLARSHIP COMMITTEE

The 2018 Scholars will be announced at the 2018 Conclave in The Greenbrier in White Sulphur Springs, WV. As a committee, we strongly encourage each chapter to continue to mentor their scholars and strengthen the relationships between the chapter, scholars, and the local high schools in effort to generate more scholarship applications.



### 2017-2018 Scholars Renewal Process

- 28 Past scholars were eligible to reapply for the scholarship
- 24 scholars reapplied for the scholarship
- 22 scholars meet the renewal requirements and received the annual scholarship

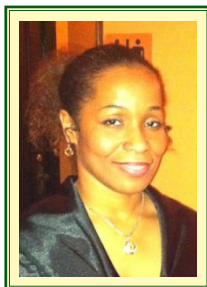
For the 2018-2019 renewal scholarship cycle, the Scholars received an email on April 22nd with instructions regarding the online renewal form and submission of an official transcript and enrollment verification by August 15th. The online renewal form will be available on the Girl Friends Fund website August 1st – 15th. Scholarship checks will be distributed in October.

To Our Lovely Girl Friends,

Thank you for your cross-country assistance with promoting the GFF scholarship, participating in the scholarship training, submitting scholarship applications, communicating with local school districts, cultivating our scholars, raising scholarship funds, and giving to The Girl Friends Fund both in service and in dollars. Your efforts are impacting the development of the next generation and your continuous lovely friendship is embracing and creating a community of great scholars!

Respectfully submitted on behalf of the Scholarship Committee,

*GF Fawn Robinson*  
GF Fawn Robinson



GF Mellisa  
Archer  
Buffalo



GF Marie Bush  
Toledo



GF Marcella  
Cox  
Cleveland



GF Nedra  
Starling  
Cleveland

# FUNDRAISING COMMITTEE REPORT



GF Ann  
Walters Pope  
Miami  
Chair

The Girl Friends Fund, Inc.

## Fundraising Committee Report

"Bringing Dreams to Life" is the cornerstone of all fundraising efforts for The Girl Friends Fund, Inc. The Fund took on a new approach that empowered all Board Members to contribute. There were multiple efforts taking place and all Board Members were engaged.

Our current Fundraising efforts are:

- Eunice Shreeves Scholarship Luncheon & Silent Auction
- Jewelry Sale
- Corporate Donations
- Ongoing Girl Friend's Donations

All current fundraising efforts are being revisited and reevaluated. Lots of brainstorming is taking place to explore redesigning some existing programs to yield more benefit to the Fund while increasing interest among Girl Friends and outside donors and building excitement around "Bringing Dreams to Life".

We agreed that the Fund must create a sustainable strategy around fundraising. Along with the strategy, development of a GFF Fundraising Toolkit – the why and how we all can get involved in raising funds for the FUND; a collaboration with existing Girl Friends events around the country; A GFF Giving Day; targeting of Top 20 companies with education giving; and continuing to encourage our Girl Friends to contribute... making it easy...making it FUN!!!

To that end, a Special Scholarship Campaign is being inaugurated this year to celebrate and honor the Founding members and Early Contributors of The Girl Friends Fund, Inc. who served during the first fifteen years (1990-2005) of the Fund's existence. The objective is to recognize and memorialize the tremendous service of our Founding members, particularly as we approach the 30th Anniversary of the Fund. Please join us and consider recognizing your chapter Pioneer of our Fund by a special contribution to the "Pioneers of the Fund Scholarship Campaign".

We need all Girl Friends! Together we can certainly raise more funds for the benefit of the youth in our communities and across our GFF regions. Please join us, identify a Pioneer to be honored, share the name of a potential donor or simply open a door by providing a specially designated contribution.

Help us with "Bringing Dreams to Life"!!!

Respectfully Submitted,

*GF Ann E. Walters-Pope*

GF Ann E. Walters-Pope

Miami Chapter

The Girl Friends Fund, Vice President & Fundraising Chair

## SPECIAL PROJECTS BRACELET FUNDRAISING COMMITTEE REPORT



GF Joyce Ford Quick  
Buffalo  
Co-Chair



GF Cecelia Henderson  
Buffalo  
Co-Chair

The Girl Friends Fund, Inc.

### The Girl Friends Fund 2018 Bracelet April 10, 2018

Dear GFF Members,

I have been honored to serve as the Chair of the Special Projects Bracelet Committee.

We have had a wonderful time selling bracelets to our Girl Friends throughout our 47 Chapters that can be worn separately and together as a demonstration of friendship and assistance to the mission of the Girl Friends Fund over the last three years.

Our Committee is so fortunate to continue working together to present our Third Limited Edition Girl Friends Fund Bracelet. The GFF 2018 Bracelet is Double Green Advertine with an engraved disk-“Bringing Dreams to Life” our tagline and with the GFF brand. This beautiful bracelet is available now to be pre-ordered online and picked up at Conclave, or purchased during our Conclave at the Greenbrier Resort. Bracelets will also be sold at the Silent Auction and at the Luncheon. Each bracelet will be individually boxed and the GFF will receive a designated profit from each bracelet sold to assist in “bringing dreams to life” for our young scholars. Thank you for your continued support of our mission!

Respectfully Submitted,

*GF Joyce Ford Quick*

GF Joyce Ford Quick, Chair

GF Cecelia B. Henderson, Co-Chair

## Limited Third Edition Now Available!



### THIRD LIMITED EDITION GIRL FRIENDS FUND BRACELET

In 2016 and 2017, The Girl Friends Fund Special Projects Fund Raising Committee announced the commissioning of a special bracelet (our limited FIRST and SECOND editions) that Girl Friends could purchase and wear to promote the Fund and its mission. They were FABULOUS ONE OF A KIND PIECES and sold out! Girl Friends, thank you for making these two fundraisers a success while Bringing Dreams to Life for our many scholarship recipients.

***The Girl Friends Fund, Inc.***  
***Third Edition Bracelet Order Form***  
***Bringing Dreams to Life***

In 2016 and 2017, The Girl Friends Fund Special Projects Fund Raising Committee announced the commissioning of a special bracelet (our limited FIRST and SECOND editions) that Girl Friends could purchase and wear to promote the Fund and its mission. They were FABULOUS ONE OF A KIND PIECES and sold out! Girl Friends, thank you for making these two fundraisers a success while for our many scholarship recipients. Our **THIRD LIMITED EDITION GIRL FRIENDS FUND BRACELET** is now available for purchase!

**Cost per bracelet is \$30 or \$33 online (\$30 + \$3 online processing fee)**

***PHOTO: GFF 2018 Bracelet: Double Green Advertine bracelet with engraved disk — “Bringing Dreams to Life”***



**YES! I would like to order my THIRD LIMITED EDITION GIRL FRIENDS FUND BRACELET!**

Name \_\_\_\_\_  
Address \_\_\_\_\_  
City/ST/Zip \_\_\_\_\_  
Email \_\_\_\_\_ Phone Number \_\_\_\_\_  
Chapter \_\_\_\_\_

# OF BRACELETS: \_\_\_\_\_ AMOUNT ENCLOSED: \$ \_\_\_\_\_

Please make check payable to The Girl Friends Fund, Inc. and enclose with this completed form. Mail completed form to: GF Annette VanDevere, 2142 Kensington Court, Marietta, GA 30064  
Or order online @ \$33 each bracelet plus custom shipping <http://girlfriendsfund.org/bracelet/>

***Thank you for your purchase!***

For GFF use only:    Date purchase received \_\_\_\_\_





## EUNICE SHREEVES SCHOLARSHIP LUNCHEON COMMITTEE

# HATS, HEELS, & HIGHBALLS

5.17.18



GF Shuana  
Tucker-Sims  
New Haven  
Co-Chair



GF Ann  
Walters Pope  
Miami  
Co-Chair

The Girl Friends Fund, Inc.

### Eunice Shreeves Scholarship Luncheon Committee Report May 17, 2018

The Eunice Shreeves Scholarship Luncheon Committee of The Girl Friends Fund, Inc. hit the ground running by developing this year's theme "Hats, Heels & Highballs" in keeping with the era and historical background of the 83rd National Conclave theme – A Gathering of Swans.

The luncheon is an opportunity for the Fund to showcase the many scholarship recipients, thank our donors and raise additional monies through the implementation of a silent auction and a pledge for donations.

Girl Friends will enjoy our traditional Welcome Parade lead by National President GF Benita Shobe! After some facts about the Fund, Girl Friends will be treated to a talented pianist that will fill the room with the sounds of Jazz and BIG Band. Besides the pianist, we will have a "High Heels" and "Bowtie" competition with plenty of wonderful prizes.

To top off the afternoon, we have two past recipients of The Girl Friends Fund Scholarship – Lauren Brown and Sierra Brown both nominated by the Roanoke Chapter. Lauren and Sierra will share how these scholarships have made a difference in their pursuit of higher education.

In addition, we will raffle several fun items as every penny counts in supporting our youth. A special thank you to Bev's Store, Statianery, Rosa's & Soror Bling for their partnership.

Girl Friends, your donations are vital to what The Girl Friends Fund, Inc. does. Please consider a donation through the pledge card at the luncheon or visit our website at [www.girlfriendsfund.org](http://www.girlfriendsfund.org).

Thank you for your continued support.

Respectfully Submitted,

*GF Shuana Tucker-Sims*

GF Shuana Tucker-Sims  
New Haven Chapter  
Co-Chair

*GF Ann E. Walters-Pope*

GF Ann E. Walters-Pope  
Miami Chapter  
Co-Chair

GF's Not Pictured: GF Melissa Archer (Buffalo), GF Maria Bush (Toledo), GF Sonya Goldboro (Las Vegas), GF Erica Newsome-Hills (Atlanta), GF Deborah Pye (Cleveland), GF Joyce Ford Quick (Buffalo), GF Dari Ruff (Washington), GF Nedra Starling (Cleveland), GF Barbara Lord Watkins (Dallas)



GF Sonya  
Goldsboro  
Las Vegas  
Chair



GF Marie Bush  
Toledo



GF Cecelia B.  
Henderson  
Buffalo

### GFF Silent Auction Annual Report *April 2018*

The 2017-2018 Girl Friends Fund, Inc. (GFF) Silent Auction Committee is comprised of GF Marie Latham Bush, Toledo Chapter, GF Cecelia Henderson, Buffalo Chapter and GF Sonya Goldsboro, Chair, Las Vegas Chapter.

The 2017 Silent Auction culminated in May 2017 at the Melia Resort in Puerto Rico. It is with great satisfaction to report that the total intake (credit card square total, cash and checks, and monetary donations from chapters) was confirmed as \$5,955.00.

Preparation for the 2018 Silent Auction to be held at The Greenbrier, White Sulphur Springs, WV was begun in December 2017. Because the members of the Girl Friends®, Inc. (GF) are members of the GFF, a letter was generated that invited GF Chapter Presidents, Liaisons and their chapter members to participate in the 2018 GFF Silent Auction. As a way of showing appreciation for supporting the silent auction, Chapter Presidents and Chapter Liaisons were invited to participate in an Entrance Parade to the GFF Luncheon. The initial Invitation Letter was distributed in January 2018.

In early February 2018, the initial Invitation Letter was followed by a document that provided information pertaining to the shipping of donated auction items, the auction location, auction set-up and time, bidding requirements, the entrance parade of presidents and liaisons, and, the GFF luncheon and auction volunteer support needs. Chapters and members were informed that all donations must have a bid sheet and that those bid sheets were to be emailed to the auction chair by a specific date.

Thereafter, monthly reminder letters were sent to GF Chapter Presidents and Chapter Liaisons. The purpose of these reminders was to keep the Silent Auction on the agendas and minds of GF chapters and GFF members. Encouraging our members was important to having a good outcome for the auction. GFs were encouraged to donate even if they were not planning to come to the Greenbrier.

Unique for this year's event is that Boy Friends are invited to attend the luncheon. In order to enhance their afternoon experience and for their bidding pleasure, chapters and members were encouraged to donate silent auction items that would be of interest to Boy Friends.

With the assistance of the GFF Luncheon chairs and the GFF President, arrangements with the hotel were made for the equipment and audio needs for the auction.

The results of the 2018 GFF Silent Auction will be announced at the 2018 GFF Annual General Meeting.

Respectfully Submitted,

*GF Sonya Goldsboro*

GF Sonya Goldsboro

GFF 2018 Silent Auction Committee Chair

# Anita Peek Gilger MD TRUST FUND



GF Helen Keith Wright  
Cleveland

## Thank you GF Helen (Cleveland Chapter) for contributions through the Anita P. Gilger Trust.

GF Helen along with GF Ersta H. Posten was responsible for the concept behind the Girl Friends Fund, Incorporated. Philanthropy in our local communities based on educating our youth was at the time and remains a necessary and laudable ideal.

GF Helen served as our Fund President from 1992-1995. She also served as our National Girl Friends, Inc. President from 1984 until 1986 in addition to other national offices. She has been a Girl Friend and member of the Cleveland Chapter since 1970. She is one of the Trustees of the Anita P. Gilger Trust and responsible for making possible the establishment of the Anita Peek Gilger, MD Trust Fund for the Girl Friends Fund, Inc.

GF Helen truly represents our ideals as a Girl Friend having always stood for dignity, service, graciousness and conviviality. Thank you, Girl Friend Helen. We appreciate your support over the years of our Fund.

## GENERAL SCHOLARSHIP FUND

September 2017 – February, 2018

### Contributions To The Girl Friends Fund, Inc. General Scholarship Fund

#### DREAMBUILDER (\$10,000 – \$16,999)

##### CORPORATE FOUNDATION TRUSTS

ANITA PEEK GILGER, MD TRUST (CLEVELAND)

**In Support of LaVerne N. Boyd**

##### CHAPTERS

Cleveland

Detroit

##### INDIVIDUAL MEMBER CONTRIBUTIONS

Patricia Maryland (Detroit) **Ascension**

#### BENEFACTORS (\$1,000 – \$4,999)

##### CHAPTERS

Columbus

**In Honor of LaVerne King, former  
National President Girl Friends, Inc.**

Dallas

Durham

Miami

Philadelphia

Potomac

Roanoke

##### INDIVIDUAL MEMBER CONTRIBUTIONS

William and \*LaVerne Boyd  
(Cleveland)

**In Memory of Mary &  
William Boyd, Sr.**

\*Marie Latham Bush (Toledo)

\*Donna Coaxum (Chicago)

\*Marcella Boyd Cox (Cleveland)

**In Memory of Mary &  
William Boyd, Sr.**

Marina Grant (Cleveland)

**In Memory of Mary &  
William Boyd, Sr.**

\*Annette Johnson (Albany)

\*Deborah Perry (Pittsburgh)

\*Joyce Ford Quick (Buffalo)

\*Jacqueline Randolph (New Haven)

Marletta Sinkler (Roanoke)

**In Memory of BF William Sinkler**

\*Nedra Starling (Cleveland)

Cleveland Clinic

Susan Stephens (Cleveland)

**In Memory of Connie Stephens**

\*Shuana Tucker-Sims (New Haven)

**In Memory of Carol F. Moore**

\*Annette R. VanDevere (Atlanta)

\*Ann Walters-Pope (Miami)

##### NON-MEMBER CONTRIBUTORS

Ralph Dise (Cleveland)

Margaret Wong (Cleveland) **In Support of LaVerne N. Boyd**

#### PARTNERS (\$250 - \$999)

##### CORPORATIONS/FOUNDATIONS/TRUSTS

Brandon Roth, Elk&Elk (Cleveland) **In Support of LaVerne N. Boyd**

Linda Frazier, TMG Services (Cleveland) **In Support of LaVerne N. Boyd**

*\*Denotes members of the Girl Friends Fund, Inc. Board of Directors*

## DONATIONS BY CHAPTERS OF THE GIRL FRIENDS®, INC.

Albany  
Atlanta  
Buffalo  
Chicago  
Cincinnati

Louisville  
Fairfield County  
Louisville  
New York  
Norfolk

Pittsburgh  
Richmond  
San Diego  
Trenton  
Washington

## INDIVIDUAL MEMBER CONTRIBUTIONS

Jennifer Alston (Roanoke)  
**In Honor of Jeanette Saks**  
Jacqueline Bontemps  
(Newport News)  
Gwendolyn Chattman (Atlanta)  
Janice Cosby (Detroit)  
Marcella Boyd Cox (Cleveland)  
Tonya Curry (Atlanta)  
Tangee Gibson (Dallas)  
Cecelia Henderson (Buffalo)

Elizabeth Hilton (Cleveland)  
Andrea Johnson (Cleveland)  
Annette Johnson (Albany)  
Debra Hunter Johnson (Dallas)  
Gwendolyn Johnson (Cleveland)  
Carla Jones (Detroit)  
Victoria Lacey (Cleveland)  
Brenda Lauderbeck (Dallas)  
Cynthia McAdory (Miami)  
**For Ann Walters-Pope**

Tracey Nash-Huntley (Dallas)  
Deborah Pye (Cleveland)  
\*Fawn Robinson (Pittsburgh)  
Pamela Rogers (Detroit)  
Joan Sessoms Ford (Dallas)  
Terilyn Shropshire (California)  
\*Barbara Lord Watkins (Dallas)  
Deidre Wilson (New York)  
Linda Wilson (St. Louis)  
Sonali Wilson (Cleveland)

## NON-MEMBER CONTRIBUTIONS

Linda Frazier, TMG Services (Cleveland) **In Support of LaVerne N. Boyd**  
Hazel Willacy (San Francisco) **In Support of LaVerne N. Boyd**  
Molly Wright (Cleveland)

## FRIENDS (\$25 - \$ 249)

### CHAPTERS

Memphis  
Pittsburgh

## INDIVIDUAL MEMBERS CONTRIBUTION

Janet Archer (Buffalo)  
Kimberlyn Atherton-Jenkins (Roanoke)  
**In Memory of Betty Atherton**  
Paula W. Bain (Miami)  
**For Ann Walters-Pope**  
Lise-Pauline Barnett (Detroit)  
Stephanie Bright (Dallas)  
Tiffany Britton (Miami)  
**For Ann Walters-Pope**  
Priscilla Wynn Brown (Trenton)  
Denise Bunkley (Dallas)  
Marla Burch (Roanoke)  
**In Memory of**  
**J. Wilson & J. Patterson**  
Teresa Burr (Springfield)  
Saundra Fenner Butcher (Roanoke)  
**In Memory of Evelyn Ash Fenner**  
Delores Cadle (Buffalo)  
Mary Calloway (Roanoke)  
Linda Campbell (Cleveland)  
Christine Campbell-Matthews  
(Cleveland)  
Kimberly Cooper Campos (Miami)  
**For Ann Walters-Pope**

Barbara Carr (Miami)  
**For Ann Walters-Pope**  
Brenda Chavers (Buffalo)  
Mary Childs (Fairfield County)  
Joanne Christopher-Hines (Miami)  
**For Ann Walters-Pope**  
Diane Clark (Trenton)  
Faye Clark (Trenton)  
Delene Copeland (Trenton)  
Beverly Crawford (Miami)  
**For Ann Walters-Pope**  
Darla Culmer (Miami)  
**For Ann Walters-Pope**  
Rheba Cannaday (Roanoke)  
**In Honor of Carolyn Patterson**  
Mollie Deberry (Roanoke)  
Gail Ash Dotson (Miami)  
**For Ann Walters-Pope**  
Stephanie Durrett (Pittsburgh)  
Elaine Effort (Pittsburgh)  
**In Memory of Gloria Brown**  
Marnese Elder (Dallas)  
Doris Ennis (Roanoke)  
**In Memory of Hugh Ennis Jr.**

Kathy Espy (Columbus)  
**In Memory of Aphelia Ashford**  
**Bethley, mother of**  
**GF Olivia Johnson**  
Margie B. Fayson (Miami)  
**For Ann Walters-Pope**  
Linda Frazier (Cleveland)  
Margaret Williamson Gains  
(Trenton)  
Carol Wilson Golden (Dallas)  
Roslyn Thibodeaux Goodall  
(Dallas)  
Andrea Haley (Roanoke)  
**In Honor of Jean Galloway**  
Elsie King Hamler (Miami)  
**Outlook Inrtnational**  
**for Ann Walters-Pope**  
Thelma Haynesworth (Roanoke)  
**In Honor of Laverne Prunty**  
Carolyn Hazelton (Miami)  
**For Ann Walters-Pope**  
Patricia Henry (Roanoke)  
Imogene Hines (Pittsburgh)  
Cheryl Hitchcock (Baltimore)

*\*Denotes members of the Board of Directors*

Alexandria Holloway (Miami)  
**For Ann Walters-Pope**  
 Lanella Hooper-Williams (Trenton)  
 Tanya Hughes (New Haven)  
 Brenda Jennings (Trenton)  
 Lauren Johnson (Springfield)  
 Jewel Johnson (Trenton)  
 Jill Johnson (Dallas)  
 Cynthia Kelly (Minneapolis)  
 Jewell Kelly (San Diego)  
 Yvette Kenner (Trenton)  
 Juliet King (Miami)  
**For Ann Walters-Pope**  
 Hilary King (Cleveland)  
 Brenda Lauderbeck (Dallas)  
 Beverly Lloyd (Atlanta)  
 Cheryl Malone (Dallas)  
 Saron McEnheimer (Roanoke)  
 Francine McLaughlin (Roanoke)  
**In Memory of Natalie Claytor**  
 Kim Montgomery (Columbus)  
 Pamela Murphy (Buffalo)  
 Jacquelyn Nance (Cleveland)  
 Emmekunia Nylander (Buffalo)  
 Phyllis Osborne (Springfield)

Venita Sockell Owens (Dallas)  
 Lori Parker (Dallas)  
 Leslie Patterson (Atlanta)  
 Patricia Patton (Atlanta)  
 Gwendolyn Pearson (Trenton)  
 Beth Reddick (Miami)  
**For Ann Walters-Pope**  
 Fawn Robinson (Pittsburgh)  
 Tawnicia F. Rowan (Miami)  
**For Ann Walters-Pope**  
 Detra Rugon (Atlanta)  
 Fancille Rusan Wilson (California)  
**In Memory of**  
**Georgia Tallier Rusan**  
 \*Benita Shobe (New York)  
 Carolyn Shovel (Roanoke)  
**In Memory of Marsha White**  
 Carol Sills (Trenton)  
 Judith Simkins (Trenton)  
 Veronica Spencer-Austin (Dallas)  
 Nedra Starling (Cleveland)  
 Leslie Taylor Stovall (Roanoke)  
**In Memory of**  
**Cynthia Taylor Wolfe**  
 Betty Thomas (Trenton)

Marye Thomas (Dallas)  
 Michelle Thomas (Dallas)  
 Bettye Thomas (Trenton)  
 Constance Thornhill-Bettis  
 (Pittsburgh)  
**In Memory of**  
**Lynne King Eberhardt**  
 Mary H. Tillman (Miami)  
**For Ann Walters-Pope**  
 Adrina Walker (Trenton)  
 Ava Washington (Dallas)  
 Daryl Jordan Washington  
 (Brooklyn)  
 Barbara Lord Watkins (Dallas)  
 Patricia White-Boyd (Roanoke)  
**In Memory of Ola White**  
 Rojean Williams (Miami)  
**For Ann Walters-Pope**  
 Fancille Rusan Wilson (California)  
**In Memory of**  
**Georgia Tallier Rusan**  
 Helen Wright (Cleveland)  
**In Support of LaVerne N. Boyd**

## NON-MEMBER CONTRIBUTORS

Sheryl Benford (Cleveland)  
**In Support of LaVerne N. Boyd**  
 Rose Butler-Hayes  
**In Honor of Shuana Tucker-Sims**  
 Linda Campbell (Cleveland)  
 Christine Campbell (Cleveland)  
 Audrey Davis (Cleveland)  
**In Support of LaVerne N. Boyd**  
 Robert E. Davis (Cleveland)  
**In Support of LaVerne N. Boyd**

Janice Douglas (Cleveland)  
 Linda Frazier (Cleveland)  
 Darlene Hardiman (Cleveland)  
 Sharon Harley  
**In Memory of**  
**Georgia Tallier Rusan**  
 Mabel Jasper (Cleveland)  
**In Support of LaVerne N. Boyd**  
 Jettye Matlock (Cleveland)  
**In Support of LaVerne Boyd**

Veda Patterson (New Haven)  
 Benita Pearson  
**In Support of LaVerne N. Boyd**  
 Melody Stewart  
**In Support of LaVerne N. Boyd**  
 Bob Tucker  
**In Honor of Shuana Tucker-Sims**  
 Leah Watson  
**In Honor of Shuana Tucker-Sims**





GF Patricia A.  
Maryland, DrPH  
Detroit

THANK YOU ASCENSION HEALTH CARE  
We salute you, our Girl Friend Patricia A. Maryland,  
DrPH and the Detroit Chapter of Girl Friends®, Inc.  
for your support of our Girl Friends Fund scholars!

Girl Friend Patricia A. Maryland, DrPH, Executive Vice  
President, Ascension, and President and  
Chief Executive Officer,  
Ascension Health Care.

Dr. Maryland has been a Girl Friend since 1986.

# ESTHER C. MARIGONEAUX ENDOWMENT FUND

## 2018 Contributions

GF Esther C. Marigoneaux was a visionary who stood at the helm of the GFF as President from 2000-2002.

She had the foresight to establish an endowment fund in 2002 with hopes that it would come to provide a constant revenue stream for GFF Scholarships. She asked each GF to make a one time donation of \$250. GF Lynda Carroll followed in GF Esther's footsteps with lofty ideas of her own. Under her leadership, the fund was named in honor of GF Esther and a medallion was designed for presentation to each GF who made the requisite contribution. These became "members" of the GF Esther C. Marigoneaux Endowment Fund (ECMF) and their names were inscribed on plaques displayed at the GFF Annual Meeting. In response to her desire to honor donations to the ECMF beyond that initially requested, during her tenure as President, GF Carole Temple Phillips established the ECMF Certificate.

Since 2002, membership in the ECMF has grown to over 400 individuals and 30 chapters of The Girl Friends®, Inc. In 2016, GF Cecelia B. Henderson, president of 'The Fund', presented first-time members medallions engraved with their name, date, and GFF logo.

The ECMF Presentation of Awards remains a sacred celebration of GF Esther and is conducted during the GFF Annual Meeting.

Trudy Duncombe Archer (Detroit)\*  
Marcella Boyd Cox (Cleveland)\*  
Brenda Brown (Detroit)\*  
Gwen Chattman (Atlanta)  
Miriam Clark (Detroit)\*  
Christy Clayton (Durham)\*  
Tanya Curry (Atlanta)\*  
Rosemary Duffy Cooper (Columbus)  
Kathy Espy (Columbus)  
Elizabeth Espy (Atlanta)  
Marina Grant (Cleveland)\*  
Valerie Harrison (Philadelphia)\*  
Joya Harrison (Detroit)\*  
Elizabeth Hilton (Cleveland)\*

Wanda Coleman Hudson (Las Vegas)  
Lynette Jackson (Cleveland)\*  
Annette Johnson (Albany)\*  
Victoria Lacey (Cleveland)\*  
Barbara Lord Watkins (Dallas)  
Robyn Markoe (Detroit)\*  
Taryn Markoe (Detroit)\*  
Deborah Pye (Cleveland)\*  
Jacqueline Randolph (New Haven)  
Fawn Robinson (Pittsburgh)\*  
Susan Stephens (Cleveland)\*  
ShuanaTucker (New Haven)  
Annette VanDevere (Atlanta)  
Sonali B. Wilson (Cleveland)\*

\*Denotes New Members

### Chapters

Albany  
Atlanta  
Birmingham  
Boston  
Buffalo  
Cincinnati  
Cleveland  
Columbia  
Dallas\*

Detroit  
Durham  
Loudoun County\*  
Louisville  
Memphis  
Miami  
New Jersey  
New Haven  
New York  
Newport News

Norfolk  
Orlando  
Philadelphia  
Richmond  
Roanoke  
Seattle  
St. Louis  
Toledo\*  
Roanoke  
Washington

### Members

Angela Adderley  
Deborah Marigoneaux Allen  
Barbara W. Alston  
Jennifer D. Alston-Sako  
Janet C. Archer

Melissa Archer  
Bert Asbury  
Paquita Harris Attaway  
Gail Bailey  
Cynthia Ackron Baldwin  
Faustina Balthazar-Rucker

Lynne Rosewald Bannister  
Cecelia Powell Barnes  
Angela Bass  
Lillian McLean Beard  
Patricia Beckett  
Mary D. Bell

Roslyn Bell  
Robin Belle  
Betty Ann Belle  
Toni DesVerney Bennett  
Michelle Bernard  
Nesta Bernard  
Angela McAlister Berry  
Daryl Jerome Berry  
Angela Blayton  
Anita Bond  
Jacqueline Bontemps  
Georgia Booker  
Kelly Booker  
Pamela J. Boone  
Dorothy Bostic  
LaVerne Nichols Boyd  
Keree Brannen  
Elba "Tina" Brewer  
Betty Brinson  
Christina Brown Bristol  
Shonda Brock  
Cheryl Whiteman Brooks  
Alma Brown  
Alma Arrington Brown  
Antoinette Brown  
Barbara Brown  
Beulah Brown  
Carol N. Brown  
Gloria Brown  
J. Melva Brown  
Joy San Walker Brown  
Juanita Washington Brown  
Melva Brown  
Virginia Lewis Brown  
Betty Bell Browne  
Carol Bryant  
Vicki C. Bryant  
Janice Burks  
Teresa A. Burr  
Evelyn Burton  
Marie Bush  
Jean Clarkson Butler  
Mildred Carrethers  
Lynda Perry Carroll  
Carolyn M. Carter  
Cynthia S. Carter  
Irene Carter  
Jonita Carter  
Gwendolyn L. Chattman  
Mary Johnson Childs  
Doris Ford Chisolm  
Kim Clark  
Donna Coaxum  
Anita Cox Cobb  
Cindy Carter Cole  
Barbara Bell Coleman  
Barbara Bryce Coleman  
Yolanda Coleman  
Eleanor O'Banyoun Collins  
Michelle L. Collins  
B. Stephanie Commander  
Forrestine "Tina" Coombs  
Cheryl Cooper  
Melva B. Copes  
Betty Corbitt

Stacey Crittenden  
Brenda Culp  
Daryl Dance  
Suzette Scarver Dave  
Joan Spence Davis  
Sandra Days  
Mwendwa Denee  
Maria DeLongoria  
Pamela DeLongoria  
Margaret Falkener DeLorme  
Charlyne Dickerson  
Shauna Ryder Diggs  
Katherine Dockens  
Daisy Douglas  
Laura M. Douglas  
Dorothy Dowdye  
Muriel J. Drew  
Sandra Driver  
Rosemary Duffy-Cooper  
Nina Kenney Dunn  
Elaine Effort  
Joan Eldridge  
Caroline Taylor Ellerson  
Deanne Hope Emerson  
Cecelia Epperson  
Elizabeth N. Espy  
Kathy D. Espy  
Amy Espy-Smith  
Laura Espy-Bell  
Lynne Espy-Williams  
Hazel Ferguson  
Scyla Murray Fernandez  
Cheryl Finley  
Hillarie Flood  
Joan Sessoms Ford  
Margaret E. Foster Franklin  
Veronica Marshall Frazier  
Shirley D. Freeman  
Jodi Gallman  
Margaret Gaines-Clark  
Kitty Gardiner  
Connie Gee  
Mary Beaudoin Gibbons  
Nanette Binford Gibson  
Sonya Goldsboro  
Tiffini Greene  
Phoebe A. Haddon  
Maeble Hairston  
Dela Hale  
Joan Hall  
Bernadette Hamilton  
Lyn Hamlin  
Janie Greenwood Harris  
Robin Leach Harris  
Sharon Harris  
Lucille Brinson Harper  
Jacquelyn T. Hartley  
Toni D. V. Hawkins-Bennett  
Margaret Haynes  
Stacy Haynes-Nelson  
Cecelia B. Henderson  
Charlotte Henderson  
Julia H. Henderson  
Gwen Hicks  
Jessica Hicks

Imogen Hines  
Harriet D. Hobson  
Yolanda Holmes  
Olga Holt  
Joan Willis Holton  
Ruby Homayssi  
Helen Hopson  
Deanna Ford Horton  
Sheilah Shaw Horton  
Royalynne Hourihan  
Dolores B. Hudson  
Alice K. Houston  
Agatha Howard  
Shirley J. Hughes  
Casma Huie  
Myrtle J. Humphrey  
Annie Hunter  
Carol Iglesias  
Joan James  
Daisy Jeffries  
Alexine Johnson  
Audrey E. Jackson  
Debbie C. Jackson  
Emily Jackson  
Valerie J. Branch Jackson  
Joan James  
Daisy Jeffries  
Gygi Jennings  
Andrea L. Johnson  
Eddie Bernice Johnson  
Erica Nicole Johnson  
Ernestine Norwood Johnson  
Evelyn Johnson  
Joan Arrington Johnson  
Mae Coleman Johnson  
Tamara Harris Johnson  
Carla D. Jones  
Laren Jones  
Leslie Davis Jones  
Michele W. Jones  
Rosalyn Jones  
Shirley Jones  
Carolyn Lamar Jordan  
Margaret H. Jordan  
Anona Joseph  
LeVerene Kelley  
Cynthia Kelly  
Elsie B. Kennedy  
LaVerne Dukes King  
Kathleen C. A. Knight  
Betty Kolb  
Debra Lamb  
Barbara M. Lanier  
Carolyn Contee-Lassiter  
Dede Lea  
Jean Leach  
Melanie B. Leak  
Kimberly Leslie-Patton  
Donna Lewis  
Lynn Lewis  
Tina Lewis  
Charisse Lillie  
Eveline Lloyd  
Rhea Lloyd  
Edna Center Lofton



Vada Love  
Jenny Lovell  
Lori Helen Luis  
Andre Mahone  
Andrea T. Mahone  
Teri Mallett  
Stephanie J. Marioneaux  
Esther Commander Marioneaux  
Eva Martin  
Anita Marioneaux Martinez  
Barbara Mason  
Lorraine Matthews  
Betty D. McClain  
Belma McClaskey  
Sylvia McKinney  
Juanita D. Melford  
Yvonne Minor-Ragan  
Terrelle Mitchell  
Margaret Moore  
Margaret Turman Moreland  
LaShana B. Morris  
Thelma Morris  
Jessica L. Morse  
Carolyn Lewis Mosby  
Sandra L. Murdock  
Maria Murphy  
Maria D. Murphy  
Pamela Elizabeth Murphy  
Jo Foster Murray  
Ellen Bentley Nash  
Antoinette Johnson Neals  
Carol Neyland  
Lisa A. Nichols  
Gladys E. Nichols  
Lynell C. Nunn  
Emmekunla Nylander  
Phyllis Osbourne  
Julie Othman  
Faye D. Owens  
Maxine Owens  
Cheryl Parker  
Gwendolyn Pearson  
Sandra Pemberton  
Deborah L. Perry  
Ruth L. Pettis  
Alona Phillips  
Carole Temple Phillips  
Elyse Phillips  
Martha D. Phillips  
Neil Foster Phillips  
Aurelius H. Pitts  
Marie Pogue  
Heather Poladian  
Mildred Pollard  
Josephine Poindexter  
Camille Porter  
Marie E. Porter  
Ersa Hines Poston

Joyce Price  
Marion Proffitt  
Dorothy Pryor  
Shirley Williams Purvis  
Eleanor Quash  
Joyce Ford Quick  
Jacqueline Randolph  
Sharon Rencher  
Barbara Rice  
Carolyn Rice  
Michelle Richardson  
Joan Belle Ricks  
Pamela Elizabeth Riddick  
Vera Riddick  
Ida Risbrook  
Emma Roberts  
Agnes G. Robinson  
Alexis B. Robinson  
Irene O'Banyoun Robinson  
Sylvia K. Robinson  
Lynne Williamson Rogers  
Marcia Boddy Rogue  
Georgia Tallier Russan  
Dorothea Moore Saunders  
Leslie Joy Sawyer  
Darlene Jeffries Schaller  
Brenda Scott  
Marie Ray Scott  
Karen Selsey  
Nancy Sergile  
Ann Sewell  
Joyce Sewell  
E. Christine Ramsey Shack  
Florence Sharpless  
Juanita Shavers  
Benita F. Shobe  
Nancy Sergile  
Jacquelyn Shropshire  
Mirian Shropshire  
Terilyn Shropshire  
Karen F. Shirley  
Anne Simmons  
Gwen Simmons  
Leslie Simmons  
Sylvia A. Simmons  
Barbara Simpkins  
Rosalind Sims  
Rose Singley  
Marzetta F. Sinkler  
Grace Hopson Smith  
Racheal Norcom Smith  
Grace Hopson Smith  
Marilyn M. Smith  
Monica Smith  
Shirley Powe Smith  
Brenda Snead  
Konnetta Sparks  
Virginia Scott Speller

Sharon A. Spencer  
Cheryl Spicer-Bryant  
Cecile Kennedy Springer  
Donna Sprott  
Cheryl Stanley  
Nedra Starling  
Clotilde Stenson  
Lisa Stenson- Desamours  
Cheryl L. Steward  
Marilyn Strong  
Carolyn Young Suarez  
Myrna Symes  
Ruthie Ida Tate  
Kathy Taylor  
Paula Whitfield Taylor  
Phyllis Taylor  
Betty Wimberly Thomas  
D. Conrada Gill Thomas  
Inez Thomas  
Lorna Thomas  
Lydia Thomas  
Claudia Thompson  
Jackie Threadgill  
Deanna Shobe Tinsley  
Shirley Tolentino  
Cecile Tolliver  
Winifred Veronica Torbet  
Tamara Torbert  
Vivian Tuck  
Shuana K. Tucker Sims  
Chaton T. Turner  
Marita Turner  
Oddis Calvin Turner  
Barbara Robinson Utterback  
Janice Valentine  
Emma S. Walker  
Karen Hodges Walker  
Shirley Walker  
Valaida Walke  
Ann E. Walters-Pope  
C. Linda Waples  
Barbara Weaver Ward  
Ava F. Washington  
Daryl Jordan Washington  
Barbara Lord Watkins  
Harriet Watson  
Bessie H. S. Weaver  
Jacquelyn Hartley White  
Nola Lancaster Whiteman  
Alease Williams  
Doris Williams  
Esther Williams  
Frances Williams  
Julia Williams  
Marguerite L. Williams  
Donna Wilson  
Shelia Wilson  
Margaret Bush Wilson

## CHAPTER CHALLENGE

### CHAPTER CHALLENGE

Our Girl Friend Chapters “rocked” the GFF challenge this year!!! Cleveland and Detroit were in a dead heat as the top fundraisers. Potomac and Dallas competed for an exciting 2018 GFF challenge! Potomac edged Dallas out with a \$405 difference in donations. Collectively, these four dynamic chapters and their members raised an awe-inspiring \$31,470.17.

CLEVELAND | DETROIT | POTOMAC | DALLAS

### MEMBER CHALLENGE

Teamwork still makes the dream work!! This was demonstrated by the following Chapters who combined their outstanding concerted efforts and ability to work together to contribute as Chapter Donors to our Fund. When Chapters support the Fund and its mission, they support their respective communities and our future leaders. We may also be producing future Girl Friends and Boy Friends.

ROANOKE | PHILADELPHIA | MIAMI | DURHAM  
DALLAS | COLUMBUS | BUFFALO

With Appreciation to all Participating Chapters

Louisville, Pittsburgh, Fairfield County, Cincinnati, Albany, San Diego, Memphis, Richmond, Chicago, Atlanta, Trenton, Albany, Memphis and Norfolk.

WE SALUTE ALL GIRL FRIEND, INC. CHAPTERS. THANK YOU FOR YOUR GENEROSITY AND GIVING!!!!

Boston	Detroit	New Jersey
Buffalo	Durham	Newport News
California	Fairfield County	Norfolk
Chicago	Loudoun County	Orlando
Cincinnati	Louisville	Potomac
Cleveland	Memphis	Richmond
Columbia	Miami	Roanoke
Columbus	New Haven	San Diego
Trenton	Washington	



GF Nedra  
Starling  
Cleveland  
Chair

## Communications Committee Year End Report 2017 – 2018

### Fall/Winter Newsletter 2017 – 2018:

- The Fall/Winter 2017–2018 Newsletter was distributed in early December, 2017
- Sent to the following individuals. Each recipient was asked to share the Newsletter with others specifically as noted:
  1. All Girl Friends®, Inc. Executive and Advisory Board members
  2. All Girl Friends®, Inc. Chapter Presidents – asked to share with all members of their Chapter
  3. All GFF Chapter Liaisons – asked to share with all members of their Chapter
  4. All GFF Board members and Committee Chairs (including President of GF, Inc.)
  5. All GFF Presidents Emeriti
  6. All Girl Friends®, Inc. members

- Included a welcome from the Fund's President, GF LaVerne N. Boyd, a listing of our Board Directors and highlighted new directors and Committee Chairs/Co-Chairs, introduced new Liaison & Chapter Relations committee and chair with a listing of Chapter liaisons and asked for updates
- Summarized our May, 2017 Scholarship Luncheon and Silent Auction and included a thank you to all GFs/Chapters and specifically those who donated Silent Auction prizes
- Listed our new scholars, returning scholars, and sponsoring Chapters
- Introduced new page – GFF Chapter and Scholar Happenings to update chapter & scholar information and happenings/relationships
- Included "SAVE THE DATE" information on our upcoming Eunice Shreeves Scholarship Luncheon and Silent Auction and continued encouragement for the donation of individual and Chapter items
- Presented our Second Edition GFF Bracelet Fund Raiser and encouraged purchase
- Presented our second Barnes & Noble Bookfair Fund Raiser
- Presented the Chapter Challenge and Member Challenge to encourage more donations
- Included launch information on our updated website and enhanced features, especially those allowing for online donations, ticket purchasing and bracelet purchasing
- Encouraged attendance at our 2017 Annual Meeting

### Spring/Summer Newsletter 2017 – 2018:

- The Fall/Winter 2017–2018 Newsletter was distributed in April, 2018
- Sent to the following individuals. Each recipient was asked to share the Newsletter with others specifically as noted:
  1. All Girl Friends®, Inc. Executive and Advisory Board members
  2. All Girl Friends®, Inc. Chapter Presidents – asked to share with all members of their Chapter
  3. All GFF Chapter Liaisons – asked to share with all members of their Chapter
  4. All GFF Board members and Committee Chairs (including President of GF, Inc.)



## COMMUNICATIONS COMMITTEE

- 5. All GFF Presidents Emeriti
- 6. All Girl Friends®, Inc. members

- Included a welcome from the Fund's President, GF LaVerne N. Boyd, a summary of the Scholarship activities and submission process, Updates and invitations to participate and/or make purchases and donations from the Scholarship Luncheon, Silent Auction, Fund Raising (Special Projects) Bracelet and Chapter & Liaisons Relations committees with donor forms

- Encouraged attendance at our 2017 Annual Meeting

### Proposed Fall Newsletter 2018 – 2019:

Communications will now start plans for the issuing of the Fall GFF Newsletter that will:

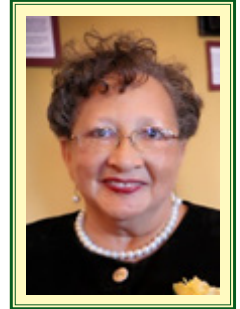
- Distribution to all Girl Friends®, Inc. Executive and Advisory Board members, Chapter presidents and GFF liaisons, and Girl Friends®, Inc. members, GFF Board members, GFF Committee Chairs and GFF Presidents Emeriti
- Each will be asked to share the Newsletter with others specifically as noted:
  1. All Girl Friends®, Inc. Executive and Advisory Board members
  2. All Girl Friends®, Inc. Chapter Presidents – asked to share with all members of their Chapter
  3. All Girl Friends®, Inc. members
  4. All GFF Chapter Liaisons – asked to share with all members of their Chapter
  5. All GFF Board members and Committee Chairs (including President of GF, Inc.)
  6. All GFF Presidents Emeriti
- Introduce new GFF Board members, officers and committee chairs
- List our new scholars (with photos), returning scholars, and sponsoring Chapters
- Present the Chapter Challenge and Member Challenge early in the year to encourage more donations in a timely manner
- Annual request for update of Girl Friends®, Inc. Chapter GFF liaison information
- Updates of any Chapter and scholar happenings
- "SAVE THE DATE" information on our upcoming Eunice Shreeves Scholarship Luncheon and Silent Auction and encouragement of attendance and donations
- Include information on continued and new Special Fund Raising efforts
- Encourage attendance at our 2018 Annual Meeting

We are open to suggestions to increase scholar visibility, encourage Chapter involvement with their scholars and the opportunities that can be made available to our scholars via GFF and/or Chapters and/or individual GFs.

Respectfully Submitted

*GF Nedra Starling*

GF Nedra Starling  
Cleveland Chapter  
Communications Committee Chair



GF Jacqueline  
Randolph  
New Haven



GF Marcella  
Cox  
Cleveland



GF Annette  
VanDevere  
Atlanta



GF Jacqueline  
Randolph  
New Haven  
Chair

### Liaison and Chapter Relations Committee Report

*Annual Meeting - May 17, 2018*

The Greenbrier Resort & Spa

The Liaison and Chapter Relations Committee is a new committee established in August 2018. Committee members are GFs Nedra Starling, Lenora Brown, Dari Ruff, and Jacqueline Randolph, chairperson. Meetings were held via Conference Calls.

An objective of this committee is to educate GFF members, encourage support for our mission, maintain current support to the GFF and to identify and cultivate additional consistent supporters. It became apparent during communications that the position of Chapter Liaison was not consistently viewed across many GF chapters. A second concern was that there was not a uniform understanding of the Chapter and Member Challenges for our fundraising across chapters.

Several communications were sent out to Chapter Presidents and Liaisons urging them to share information with chapter members. This included:

- A letter from GFs LaVerne and Jacque thanking the Liaisons and acknowledging the importance of their position in being a lifeline to the GFF;
- Information about the Barnes and Noble Book Fair;
- National Giving Tuesday;
- Revised information about our Chapter and Member Challenges;
- Revised donor forms for both Girl Friends and Non-Girl Friends; and
- A reminder that donations to the Girl Friend Fund, Inc. are tax deductible.

On January 21, 2018 a Conference Call was held with Liaisons and Presidents to discuss the newly developed Liaison Job Description. In addition, GFs LaVerne Boyd (Pres. GFF), Nedra Starling (Sec. GFF and Communications Chair), and Jacqueline Randolph (Chair Liaison and Chapter Relations) led discussions on the correct use of the Forms, the Named Scholarships, the Signature Projects and the Annual Meeting. The chapters represented on the call were Detroit, Miami, Philadelphia, Toledo, Washington, DC, Fairfield County, Roanoke, Cleveland, and New Haven.

I want to express my appreciation to the Executive Board for the support given me this first term. I am looking forward to another productive year. The new Liaison Job Description is attached.

Respectfully and Girl Friendly submitted,

*GF Jacqueline Randolph*

GF Jacqueline Randolph

## LEGAL REVIEW/ BYLAWS COMMITTEE



GF Donna  
Coaxum  
Chicago  
Chair

### Legal Review Committee *Annual Meeting - May 17, 2018*

The Legal Review Committee worked closely with the President and the GFF Board to review information and a variety of documents in support of the strategic mission of the GFF.

The Legal Review Committee supported the review and finalization of new processes and procedures for the offices of Treasurer, Financial Secretary and Assistant Treasurer.

The Legal Review Committee in collaboration with the Trademark Clinic at California Western School of Law commenced filing of a trademark application for the GFF logo and tagline.

The Legal Review Committee has undertaken due diligence for the creation of a co-sponsorship fundraising program that would allow Girl Friend Chapters to partner with the GFF under its 501(C)(3) status umbrella for fundraising at the Chapter level. The first draft of the co-sponsorship fundraising program guidelines is currently under review. The debut of the program is expected in the fall, 2018.

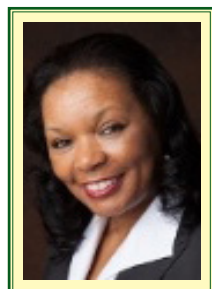
The Legal Committee worked with the West Virginia State Tax Department to complete a sales and use tax exemption filing for a reduction in sales tax for GFF Luncheon and activities in West Virginia.

The Legal Review Committee Chair was appointed as Parliamentarian and also handled all responsibilities commensurate with that office.

Respectfully Submitted,

*GF Donna B. Coaxum*

GF Donna B. Coaxum  
Parliamentarian /  
Chair of Legal Review Committee



GF Deryl  
Brown-Archie  
Seattle



GF Karma  
Rodgers  
Butler  
Milwaukee



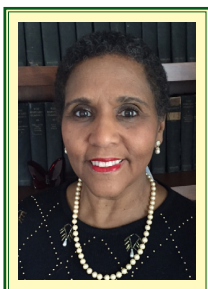
GF Miriam  
Clark  
Detroit



GF Gail Ash  
Dotson  
Miami



GF Joan  
Sessoms Ford  
Dallas



GF Juanita  
Temple  
Chicago

GF's Not Pictured: Maebel Hairston (New Jersey), Janie Greenwood Harris (Nashville), Judith Hightower-Mills (Seattle), Patricia Hardiman Long (Boston), Joyce Moorehead (Potomac), Chrystie Boucree Price (New York), Lyn A. Simmons-Jones (Norfolk), Frances Dyer Stewart (Durham), Marquetta Stewart-Brown (San Diego), Cheryl Sueing-Jones (San Diego)



GF Fawn  
Robinson  
Pittsburgh  
Chair

### Website/Technology Committee Report *Annual Meeting - May 17, 2018*

Dear Girl Friends ,

The website for The Girl Friends Fund has undergone a complete overhaul since last year.

We were pleased to announce in the winter that all updates had been completed and we were up and running! We hope by now you have had an opportunity to visit us online at [girlfriendsfund.org](http://girlfriendsfund.org). The committee believes the new and improved GFF website has lots of value-added features and is:

EASY TO NAVIGATE

DESIGNED FOR YOU, OUR MEMBERS AND OUR GUESTS

INFORMATIVE AND KEEPS YOU UP TO DATE ABOUT SCHOLARS, ACTIVITIES AND FUNDRAISING EVENTS

The committee also wanted to make sure it would be easy for individuals to donate and support GFF events, so it also:

ALLOWS INDIVIDUALS TO MAKE DONATIONS

ALLOW INDIVIDUALS TO PURCHASE TICKETS TO OUR EVENTS AND PURCHASE GFF MEMORABILIA.

Will be utilized in 2018 to assist with Scholarship Application Process.

Please visit our enhanced website. We hope you find it easy to navigate through the new pages and find the information you are looking for. We did our best to design it for you and our guests so that everyone can be informed and keep up to date about our scholars and our scholarship process as well as with the Fund's activities and fundraising events. There are links that allow individuals to make donations to the Fund in support of our scholars.

The new and improved website was designed to serve you, our members. And, remember — ALL MEMBERS OF THE GIRL FRIENDS®, INC. ARE MEMBERS OF THE GIRL FRIENDS FUND, INC.

Girl Friendly,

GF Fawn Robinson  
Website Chair

## OVERVIEW OF DONATIONS TO THE GF FUND, INC.



The Girl Friends Fund, Inc. (GF Fund) is classified as a 501 (c) (3) nonprofit public charity under the Internal Revenue Code. This means that the GF Fund is:

- 1) organized exclusively for charitable and education purposes, and
- 2) donations made by Girl Friends, Boyfriends, corporations and the general public are tax deductible.

The Girl Friends Inc. (GF Inc.) is classified as a 501 (c) (4) Social Welfare nonprofit organization. This means that while the GF Inc. may give charitable donations to The GF Fund and other public charities, contributions made to GF Inc. by the Girl Friends are NOT tax deductible. For that reason, chapters and/or Girl Friends who would like to donate to the GF Fund should make their checks payable directly to The GF Fund. Moreover, chapter donations made to The GF Fund should include a list of the names of individual Girl Friends and the amount donated, so they may receive individual receipts for their tax deduction.

### Type of Donations

Donations may be made in cash, check, and credit card; may be payable by mail or online via Pay pal; and may be made in-kind, such as contributions of items to the auction. Donors will receive a tax receipt for any donation of \$75.00 or more. Contributions may be designated for a particular scholarship Fund, such as the Esther P. Marioneaux Scholarship (\$250.00 minimum donation), Gwendolyn G. Johnson Fund, Carole T. Phillips Fund, and Caroline M. Carter Fund; or can be contributed to the General Fund. Donations made to specific scholarship funds can only be distributed or used in accordance with the guidelines specified by the donor of the fund.

Donations made for the silent auction should include a dollar value or a copy of receipt of purchase, if one is available. The donor of the item may receive a tax deduction for the value of the item listed at the time of the donation. For example, if an artist donates a painting to the Girl Friends Fund to be auctioned, the artist must assign a monetary value to the item. That value would be the basis for the tax deduction. If a Girl Friend donates an item she already has, a fair market value must be provided by her as the donor. Last year, a Girl Friend donated a vacation time share and provided a fair market value for the donated item. Keep in mind that the person bidding on the item is not entitled to a deduction for the total amount paid under the IRS rules because they are receiving something of value. If a handbag is donated that is valued at 150.00 and a bidder at the auction purchases it for \$300.00, \$150.00 or the amount of the purchase over the value of the handbag may be eligible for a tax deduction.

If a chapter wants to co-sponsor an event or solicit a corporate donation on behalf of the Girl Friends Fund, Inc., please contact GF President, LaVerne Boyd at [GFLaVerne@girlfriendsfund.org](mailto:GFLaVerne@girlfriendsfund.org) for more information.

These are general guidelines and any individual who intends to take a tax deduction for their donation should consult their own tax advisor for specific information related to their individual circumstance.

## Board of Directors Annual Meeting Minutes - Puerto Rico May 25, 2017

### Call to Order:

The meeting was called to order at 3:20 p.m. by President Cecelia Henderson. She thanked the audience for attending the Girl Friend Fund annual meeting. GF Laverne Boyd gave the meditation. GF Annette VanDevere called the roll.

**Present:** GFs LaVerne Boyd, Marie Latham Bush, Sonya Goldsboro, Cecelia B. Henderson, Ericka Newsome-Hill, Deborah L. Perry, Joyce Ford Quick, Dari K. Ruff, Shuana Tucker-Sims, Annette VanDevere, Ann Walters-Pope, Barbara Lord Watkins,

**Other Present:** GFs LaShana Broussard-Morris (Investment Chair), Nina Jennings (History Co-Chair), Fawn Robinson (Scholarship Chair), Kim Savoy (Website Technology Chair),

**Absent:** GF's Melissa S. Archer Nedra Starling and Benita Shobe

There was a quorum present. It was moved by Newport News and seconded by Memphis to accept the 2016 minutes. Motion passed.

### Report – Officers:

**President** - GF Cecelia Henderson reported that her activities have focused on reconstruction of the website; communicate the sale of the bracelets; scholarship recipients; appointment of a marketing committee; fundraising and special projects; investment report, Form 990 completed; internal audit has been completed; 2nd edition of the history book; increased the bonding insurance. Please see her message in the GFF 2017 Annual Report page 3-4.

**Vice-President** - GF LaVerne Boyd reported on the Legal Review Committee work. Please see her message in the GFF 2017 Annual Report page 33.

**Secretary** - GF Nedra Starling (not present)-Please see her message in the GFF 2017 Annual Report page 36-37.

**Assistant Secretary** - GF Annette VanDevere reported on the acknowledgement of donations. Please see her message in the GFF 2017 Annual Report page 10.

**Financial Secretary** - GF Ann E. Walters-Pope reported on the income. Please see her message in the GFF 2017 Annual Report page 11.

**Treasurer** - GF Deborah Perry reported on the income and expenses. Please see her message in the GFF 2017 Annual Report page 12. It was moved by GF Casma Huie and seconded by GF Carole Phillips to accept the report of the treasurer. Motion passed.

Also the proposed budget for 2017-2018 was presented. It was moved by New Haven and seconded by Fairfield County to accept the proposed 2017-2018 budget. Motion passed.

**Parliamentarian** - No report was offered.

### Reports – Committee:

**Internal Audit** - GF Barbara Lord Watkins recommended to have a CPA do an external audit. A proposal was made to have an audit for 2017-2018 and to use the services of a Dallas based CPA. Questions came from the audience on costs and were answered. It was moved by New Haven and seconded by New York to accept the report including the recommendations. Motion passed. Please see her message in the GFF 2017 Annual Report page 10.

**Investment/Finance** - GF LaShana Broussard Morris provided an overview of the GFF investments. She said that we are managed by Ameriprise Financial and have gone from moderately conservative to moderately aggressive in our investment portfolio. Please see her message in the GFF 2017 Annual Report page 18,19 & 31.

**Scholarship/Website** - GF Fawn Robinson provided a report on Scholarships & website development. Please see her message in the GFF 2017 Annual Report page 7-8.

**Fundraising/Luncheon** - GF Ann E. Walters-Pope provided an overview of the luncheon. Please see her



message in the GFF 2017 Annual Report page 21.

**Fundraising/Special Projects** - GF Joyce Ford Quick provided an overview of special projects. Please see her message in the GFF 2017 Annual Report page 20.

**Fundraising/Silent Auction** - GF Sonya Goldsboro provided an overview of special projects. Please see her message in the GFF 2017 Annual Report page 20.

**Nominating/Election Board Directors** - GF Janice Marshall acknowledge outgoing directors. Please see her message in the GFF 2017 Annual Report page 34.

**Nominating/Board Officers** - GF Joyce Ford Quick provided a slate for the officers. Please see her message in the GFF 2017 Annual Report page 34.

President – GF LaVerne Boyd

Vice-President – GF Ann E. Walters-Pope

Secretary – GF Nedra Starling

Financial Secretary – GF Annette VanDevere

Treasurer – GF Deborah Perry

Assistant Secretary – GF Shuana Tucker-Sims

**Marketing/Branding** - GF Ann E. Walters-Pope provided an overview of our marketing activities. Please see her message in the GFF 2017 Annual Report page 32.

**History** - GF Nina Jennings provided a report to update the history and development of GF Fund. Please see her message in the GFF 2017 Annual Report page 35.

## **Presentations**

**Esther C. Marioneaux Endowment Fund** - President GF Cecelia Henderson made presentations of the medallion to the following GFs Angela Adderly, New Jersey; Rosemary Cooper, Columbus; Marie Bush, Toledo; Barbara Brown, Potomac; Mildred Carrethers, Dallas; Mary Charles, Fairfield County; Elizabeth Espy, Atlanta; Edie Johnson, Dallas; Tina Lewis, Las Vegas; Yvonne Reagan, Buffalo; Pamela Reddick, Norfolk; Marilyn Smith, Detroit; Shuana Tucker-Sims, New Haven; Annette VanDevere, Atlanta; Ann Walters-Pope, Miami; and Harriet Watson, Las Vegas. Chapters receiving medallions are Dallas; Loudon County; and Toledo.

**Retiring Board Director** - GF LaVerne acknowledged the retiring directors, Sonya Goldsboro and Cecelia Henderson will receive awards of appreciation.

Certificates of continued support were provided to GFs Jennifer Alston, Roanoke; Rosemary Cooper, Columbus; Kathy Espy, Columbus; Shirley Hughes, Minneapolis/St. Paul; Casma Huie, Potomac; Jacqueline Robinson, New Haven; and Barbara Lord Watkins, Dallas.

## **Old Business**

The election results of new Girl Friends to the GFF Board are LaVerne Boyd: 39 votes; Deborah Perry: 36 votes; Jacqueline Randolph: 35 votes.

New Business-None

Announcements-None

The meeting adjourned at 5:35 p.m.



VOLUME 6, ISSUE 2

SPRING/SUMMER 2017-2018

## THE GIRL FRIENDS FUND, INC. NEWSLETTER

EDITOR & WRITER—GF NEDRA STARLING (CLEVELAND CHAPTER)

Bringing Dreams to Life . . .

*The Girl Friends Fund, Inc. Mission Statement*  
Our mission is to provide financial assistance to young, academically gifted and financially challenged African-American men and women in their pursuit of a college education.



### PRESIDENT'S CORNER

GF LaVerne Nichols Boyd, Cleveland Chapter



Springtime Greetings Girl Friends !

On behalf of The Girl Friends Fund, Inc. Board and Committees, **thank you** for your support during our 2017-2018 fiscal year. Your donations and work for our scholars will in fact assist again in bringing dreams to life....one scholar at a time.

We are looking forward to the festivities planned by our Norfolk Girl Friends next month. **We have also extended the time for purchasing our scholarship luncheon tickets at \$85.00 through April 30, 2018.** Don't forget to bring your Boy Friends. Tickets may be purchased at <http://girlfriendsfund.org/luncheon-ticket/>

Peek inside to see our beautiful new GFF bracelet!

We are anticipating competitive participation in Chapter and Member Challenges. Donations received before **April 14, 2018** will be included in the Annual Report distributed prior to the Fund's Annual Meeting at the Greenbrier.

*Last, but not least, all members of The Girl Friends®, Inc. are members of The Girl Friends Fund, Inc. and are encouraged to attend the Annual Meeting following the Luncheon. We hope to see you there!*

THE GIRL FRIENDS FUND, INC.  
ANNUAL MEMBERSHIP MEETING  
THURSDAY, MAY 17, 2018, 3PM

Looking forward to seeing you at the Greenbrier for a "good ole girl friendly" time!!

*GF LaVerne*

GF LaVerne Nichols Boyd  
President of the Girl Friends Fund, Inc.

### SCHOLARSHIP

Chair — GF Fawn Robinson, Pittsburgh Chapter



The Scholarship Committee would like to say thank you to all of the Girl Friends, Inc. chapters who submitted their candidate for the 2018 Girl Friends Fund, Inc. Scholarship cycle. This year we received 24 applications — an increase over last year of 14%! We hope that means the changes we made to our website design and use made it easier to submit your candidate.

Our reviewers are currently hard at work poring over all of the applications to recommend our 2018 Girl Friends Fund scholarship recipients.

We look forward to making the **BIG ANNOUNCEMENT** at our Annual Meeting on May 17, 2018, at The Greenbrier.

All Girl Friends are members of The Girl Friends Fund and are invited to attend our annual meeting—see you there!

With Girl Friendly Congratulations and Thanks  
GF Fawn Robinson, Scholarship Chair

*Girl Friends Fund chapter liaisons — send us news about your scholars to include on The Girl Friends Fund, Inc. website and in The Girl Friends Fund, Inc. newsletter!*



*All Girl Friends are members of the Girl Friends Fund, Inc.!*

*STEP UP and champion your Fund through financial contributions, volunteering on a committee and mentoring our Girl Friends Fund, Inc. scholars!*

## THE GIRL FRIENDS FUND ANNUAL EUNICE SHREEVES SCHOLARSHIP LUNCHEON & SILENT AUCTION

### Annual Eunice Shreeves Scholarship Luncheon

*Chairs — GFs Shuana Tucker-Sims, New Haven Chapter  
& Ann E. Walters-Pope, Miami Chapter*



Proceeds benefit the  
General Scholarship  
Fund

*Please join us!*



### The Annual Eunice Shreeves Scholarship Luncheon

**Date — Thursday, May 17, 2018**

**Time — 12NOON**

**Place—Eisenhower Ballroom of The Greenbrier**

**It's not too late to get your ticket. Current ticket price is \$85 per person.** Tickets can be purchased on the GFF website. Click this link for access: <http://girlfriendsfund.org/luncheon-ticket/> or send your payment to:

GF Annette VanDevere  
2142 Kensington Court  
Marietta, GA 30064

The luncheon is an opportunity for the *Fund* to showcase the many scholarship recipients and raise additional monies through the implementation of a silent auction and a pledge for donations while having a grand time with Girl Friends and our guests.

**This year the Boy Friends are invited to join us in celebration.** There will be a scrumptious lunch, a premium cash bar, our traditional Welcome Parade of chapter presidents and liaisons led by National President GF Benita Shobe and the annual salute to our scholars and GF chapter presidents!

Looking forward to seeing you there!

In friendship and love,  
GFs Shuana Tucker-Sims & Ann E. Walters-Pope  
Eunice Shreeves Scholarship Luncheon Co-Chairs

### Annual Silent Auction Fundraiser

*Chair — GF Sonya Goldsboro, Las Vegas Chapter*



**Proceeds benefit the General Scholarship Fund**

Last year's silent auction was "off the chart" with the largest auction success for the Girl Friends Fund! Thanks to all of you (chapters and individual members) for supporting the silent auction with your donations throughout the years. Proceeds from the Silent Auction benefit our GFF scholars by providing funds to deserving academic students as they further their education. The auction items, donated by chapters, GFF directors and members are always extraordinary!! It goes without saying we could not do it without you.



We continue to ask for support from the chapters and from individual members to make the 2018 Silent Auction bigger and better than ever.

**This year, because our Boy Friends will be joining us at the auction and luncheon we are asking chapters and individual members donating auction prizes to consider including "Boy Friend friendly" items or even making a second auction donation just for the Boy Friends.**

To donate to this year's Silent Auction as a chapter or as an individual please contact me via email [jgolds64@gmail.com](mailto:jgolds64@gmail.com) and I will be happy to send you the blank auction bid sheet to assist you in making your donation.

We are also looking for volunteers to help us the day of the auction. I will be more than happy to send the volunteer task signup sheet to you as well.

With Girl Friendly Affection and Gratitude,  
GF Sonya Goldsboro, Silent Auction Chair

*All Girl Friends are members of the Girl Friends Fund, Inc.!*  
*STEP UP and champion your Fund through financial contributions, volunteering on a committee and mentoring our Girl Friends Fund, Inc. scholars!*

## Fund Raising—Special Projects

*Chair — GF Joyce Ford Quick, Buffalo Chapter  
Co-Chair — GF Cecelia B. Henderson, Buffalo Chapter*



**Girl Friends Fund  
Bracelets  
Limited Third Edition  
now available!**



In 2016 and 2017, The Girl Friends Fund Special Projects Fund Raising Committee announced the commissioning of a special bracelet (our limited FIRST and SECOND editions) that Girl Friends could purchase and wear to promote the Fund and its mission. They were **FABULOUS ONE OF A KIND PIECES** and sold out! Girl Friends, thank you for making these two fundraisers a success while *Bringing Dreams to Life* for our many scholarship recipients.

We are excited to announce our **THIRD LIMITED EDITION GIRL FRIENDS FUND BRACELET** now available for purchase!

**GFF 2018 Bracelet: Double Green Advertine bracelet with engraved disk — “Bringing Dreams to Life”**



**Cost per bracelet is \$33 (\$30 + \$3 online processing fee)  
Pre-Order now and pick up your bracelet at Conclave.**

- Use this link to pre-order for \$33  
<http://girlfriendsfund.org/bracelet/>
- Or mail your check for \$30 (no online fee) to the Fund's Financial Secretary:

GF Annette VanDevere  
2142 Kensington Court  
Marietta, GA 30064

Orders received (via online and checks) by May14th will be available for pick-up at Conclave by you or your Chapter delegate/alternate to avoid mailing fees. **Bracelets will also be available for sale at Conclave while supplies last!**

Happy GFF Shopping! - Girl Friendly yours,  
GFs Joyce Ford Quick & Cecelia B. Henderson, Fund Raising—  
Special Projects Chair & Co-Chair

## Chapter & Liaisons Relations

*Chair — GF Jacquelyne Randolph, New Haven Chapter*



Thank you to all chapter presidents and liaisons who attended our information/training session on January 21, 2018. Fundraising was a major topic of discussion, focusing on correct use of the forms, our named Scholarship Funds, our Signature Projects and our Annual Meeting. We shared that all members of Girl Friends, Inc. are members of Girl Friends Fund and invited to attend the annual meeting. We also recommended that chapters that did not have a GFF committee consider forming one.

And we encouraged enthusiastic participation by all chapters and Girl Friends in **THE GIRL FRIENDS FUND, INC. CHAPTER CHALLENGE AND MEMBER CHALLENGE!** Donations received before April 14, 2018 will be included in the annual report distributed prior to the Fund's annual meeting at the Greenbriar.



The **Chapter Challenge** is a fund raising incentive challenging **ALL CHAPTERS** to make a contribution to the Fund leading up to and beyond our annual meeting in May 2018. Chapters that meet one or more of the following criteria will be acknowledged at our annual membership meeting in May.

- ◆ Make a chapter donation of \$500 or more
- ◆ Become the chapter with the highest average per capita gift
- ◆ Give the amount equal to funding a Fund scholar for an entire year (\$1,500)
- ◆ Be the chapter that comes closest to 100 percent giving by all members

The **Member Challenge** asks every Girl Friend to step up and become a member of the Esther C. Marioneaux Endowment Fund (ECM). The ECM Endowment Fund was established in 2002 under the premise that if each Girl Friend made a ONE-TIME donation of \$250, the interest would sustain scholarships for many years into the future. The Fund would immediately increase in value by \$350K. Girl Friends who make an individual first time donation of \$250 or more to the ECM receive the Fund's Esther C. Marioneaux medalion. Repeat ECM donors will receive a certificate. Please complete the appropriate form included in this Newsletter and mail your contribution to:

GF Annette VanDevere  
2142 Kensington Court  
Marietta, GA 30064

Thank you in advance for your generous support!  
GF Jacqueline Randolph, Liaison and Chapter Relations Chair

*If each GF donates at least \$25.00, our GF Fund would have \$45,000.00 to support our efforts to help young African-American scholars in our communities.*



## NOMINATING COMMITTEE

The nominating committee creates a slate of candidates to fill vacant offices on the Board of Directors. Membership is limited to Board Members.



GF Marcella  
Cox  
Cleveland  
Chair



GF Melissa  
Archer  
Buffalo



GF Erica  
Newsome-Hills  
Atlanta

## NOMINATING COMMITTEE - BOARD OF DIRECTORS

The nominating committee for the Board of Directors recruits members of The Girl Friends, Inc.® and develops a slate of candidates to fill vacancies on the Board that are created as the result of the completion of terms of service. The Chair and the President discuss the needs of expertise on the Board and the Chair recruits members who meet those needs.



GF Faye  
Owens  
Louisville  
Chair



GF Cecelia B.  
Henderson  
Buffalo



GF Casma  
Huie  
Washington

Appointed Tellers: Elizabeth Hilton (Cleveland) and Deborah Pye (Cleveland)  
Tellers count the votes for the Nominating Committee for Board of Directors

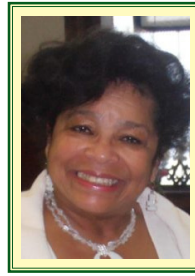
GF's Not Pictured: Laura Douglas (Louisville), Bernadette Hamilton (Louisville)

## DIRECTORS - 2017 – 2018

---



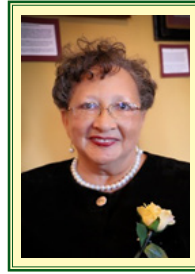
GF Melissa S. Archer  
Buffalo Chapter  
Chair Hospitality



GF Joyce Ford Quick  
Buffalo Chapter  
Chair Fund Raising -  
Special Project



GF Marie Latham Bush  
Toledo Chapter



GF Jacqueline Randolph  
New Haven Chapter  
Chair Liaison &  
Chapter Relations



GF Marcella Boyd Cox  
Cleveland Chapter



GF Dari K. Ruff  
Washington Chapter



GF Annette Johnson  
Albany Chapter



GF Barbara Lord Watkins  
Dallas Chapter  
Chair Audit



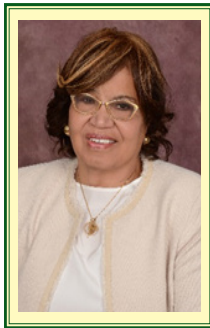
GF Ericka Newsome-Hill  
Atlanta Chapter



GF Benita Shobe  
EX-OFFICIO President  
The Girl Friends, Inc.

## OFFICERS - 2017 – 2018

---



GF LaVerne Nichols Boyd  
PRESIDENT  
Cleveland Chapter



GF Lori L. Parker\*  
ASSISTANT TREASURER  
Dallas Chapter



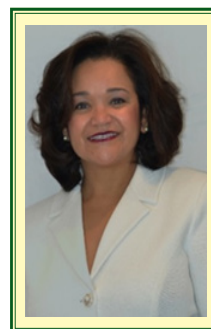
GF Ann E. Walters-Pope  
VICE PRESIDENT  
Miami Chapter



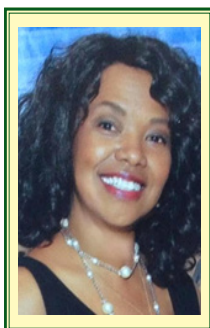
GF Annette VanDevere  
FINANCIAL SECRETARY  
Atlanta Chapter



GF Nedra A. Starling  
SECRETARY  
Cleveland Chapter



GF Shuana Tucker-Sims  
ASSISTANT SECRETARY  
New Haven Chapter



GF Deborah L. Perry  
TREASURER  
Pittsburgh Chapter



GF Donna Coaxum\*  
PARLIAMENTARIAN  
Chicago Chapter



The Girl Friends Fund, Inc. Registered Agent  
10011 Silver Creek Road Dallas, Texas 75243  
Email: [girlfriendsfund@gmail.com](mailto:girlfriendsfund@gmail.com)  
Please visit our website <http://girlfriendsfund.org>



Designed by: KayCi Designs  
[kandaceclifton.myportfolio.com](http://kandaceclifton.myportfolio.com)  
[kandaceclifton@gmail.com](mailto:kandaceclifton@gmail.com)