



BRINGING  
*Dreams*  
TO LIFE



# ANNUAL REPORT 2015

**THE GIRL FRIENDS FUND, INCORPORATED**

Financial Report — July 1, 2013 — June 30, 2014

Report of Contributions — May 1, 2014 — April 30, 2015





# TABLE OF CONTENTS

## *Bringing Dreams to Life* THROUGH...

### **SERVICE**

OVERVIEW 2014 – 2015  
PRESIDENT'S ADVISORS

### **ACCOMPLISHMENT**

HIGHLIGHTS 2014 – 2015

### **HISTORY**

ABOUT THE GIRL FRIENDS FUND, INCORPORATED  
PAST PRESIDENTS OF THE GIRL FRIENDS FUND, INCORPORATED  
HISTORY UPDATE COMMITTEE

### **FINANCIAL SECURITY**

AUDITED FINANCIAL STATEMENTS  
FINANCE/AUDIT COMMITTEE

### **SCHOLARSHIPS**

SCHOLARSHIP RECIPIENTS 2015  
SCHOLARSHIP RECIPIENTS 1995 – 2014  
NAMED SCHOLARSHIPS  
SCHOLARSHIP COMMITTEE

### **FUNDRAISING**

GF EUNICE SHREEVES LUNCHEON  
SILENT AUCTION  
FUNDRAISING COMMITTEE

### **DONATIONS**

DREAM WEAVERS  
GF ESTHER C. MARIGNEAUX ENDOWMENT FUND  
THE CHAPTER CHALLENGE  
GENERAL FUND

### **COMMUNICATION**

### **TECHNOLOGY**

### **MARKETING**

### **COLLABORATION**

LEGAL REVIEW COMMITTEE

### **NOMINATION**

### **COMMITMENT, DETERMINATION AND FRIENDSHIP**

THE GIRL FRIENDS FUND, INCORPORATED BOARD OF DIRECTORS

# OVERVIEW 2014-2015



**GF CYNTHIA CARTER COLE**  
PRESIDENT,  
*THE GIRL FRIENDS FUND, INC*

For the past 26 years, The Girl Friends Fund, Inc. (“The Fund”) has fulfilled a critical and philanthropic role in the form of service and financial support to low income, African-American students across the nation. Throughout this three-decade span, and regardless of economic or political climate, The Fund has persisted in our mission to provide renewable scholarships to students who may not otherwise access a college education. As one of the few organizations dedicated to addressing the funding gap between the limits of a student’s financial aid and their remaining tuition costs, The Fund serves a unique niche in higher education by supporting those particular students who may have no other way to college. By serving in such a crucial capacity, we are, most literally, “Bringing Dreams to Life.”

Last year, as we proudly celebrated our Silver Anniversary, we used that landmark occasion to recommit ourselves to our important role by embracing a necessary evolution. *Change* was the buzzword as our Board of Directors prioritized three areas of organizational transformation, namely changing the perceptions of The Fund, increasing our visibility, and expanding The Fund’s support base.

This year, the buzzword is *Collaboration* as the Board of Directors has collaborated with our membership to effectively implement the commitments identified for our ongoing transformation. Though merely a year removed from our rededication, our accomplishments have been both inspiring and numerous.

## 1) COLLABORATING TO CHANGE PERCEPTIONS

Over the past year, The Fund effectively collaborated to change perceptions in the following ways:

- We eliminated our legal fees by calling on members with legal expertise to form the Legal Review Committee. This committee reviewed our Bylaws, assisted in the development of proposed amendments, reviewed our Policies & Procedures, researched state law related to non-profits, assisted with the review and execution of the Web Design Agreement and drafted Letters of Agreement for our fundraising events with St. John Knits Outlets.
- We avoided an audit fee as **GF Pamela J. Boone (Boston)** donated her services to complete the internal audit of Fiscal Year 2014. GF Pam is an MBA and senior vice president in accounting at a Boston based bank. Additionally, we recruited five additional members with extensive expertise in accounting and finance who, going forward, have agreed to conduct internal audits, file our 1099 and, in the process, review our financial practices. We estimate a combined annual savings of at least \$2,500.
- **GF Sheilah Shaw Horton (Baltimore)** graciously assumed the Chair of the Scholarship Committee. Her role as Vice President for Student Development and Dean of Students at a liberal arts college positioned her perfectly to lead the review of the scholarship application process and guide our Liaisons through the process. She also contributed to the Website Committee ensuring relevant scholarship materials were included.

## 2) INCREASING VISIBILITY

Over the past year, The Fund effectively collaborated to increase visibility in the following ways:

- We proudly launched our new website, [www.girlfriendsfund.org](http://www.girlfriendsfund.org). The site provides both resources and timely information about the work of The Fund to potential donors, scholars and the public in an effective and inviting manner. There, you will find 1099 filings and Audit Reports from the last three years. Our Bylaws and Policies & Procedures are available to our members through protected password. In addition, for our Scholarship nomination process, chapters of The Girl Friend™, Inc. can nominate scholars on the site and scholars are able to upload documents supporting their application with a password protected process. **GF Keree Brannen (Orlando)** has been invaluable as Co-Chair of the Website Committee and has been the consummate GF in her willingness to assist many Board members in their efforts to improve their technology skills.



- The Board adopted the tag line, “*Bringing Dreams to Life*”, suggested by **GF Paula Nailor (New York)**, a member of the newly formed, Marketing Committee.
- **GFs Nina Foxx (San Diego) and Sheila J. Williams (San Diego)**, both creative writers, volunteered to update “*The History of The Fund.*” This important work will clarify and document where we’ve been so we may move forward from a firm foundation.

### 3) EXPANDING SUPPORT

Over the past year, The Fund incorporated both traditional and alternative methods of raising money, effectively collaborating to expand support.

Through St. John Knits Outlet, our members shopped “For a Cause” at a discount and The Fund enjoyed a 10% give back. St. John Knits Outlet provided The Fund with more than \$5,000 in additional support through in kind and real donation as the sponsor the Eunice Shreeves Luncheon, our annual fundraising event. The Fund received additional in kind support from David Yurman Outlet, Las Vegas through the donation of a jewelry ensemble to our Silent Auction.

In addition, The Fund received an in kind donation of more than \$13,000 from CosmedicDerm, in the form of a skin care gift to each of our luncheon attendees. CosmedicDerm is owned and operated by **GF Shauna Ryder Diggs, MD (Detroit)**.

Over the past year, as you can well see, Collaboration has been the key for unlocking both our power and potential as an organization. We have accomplished much and, given our more streamlined and effective approach, we will undoubtedly accomplish a lot more in the months and years to come.

Accordingly, our organizational transformation has been made possible by the substantial efforts of the Board of Directors along with the tireless and generous support and engagement of our members. Make no mistake about it; this is more than a casual acknowledgement.

For our members truly represent the heart and soul of our organization as they energize and sustain our continued efforts, ensuring that the students we serve experience the life-changing impact of a collegiate education.

As I complete the last year of my tenure as President of the Board, collaborating to Bring Dreams to Life with such an inspired, committed and powerful group of individuals has been, indeed, both a lofty purpose and a heartfelt pleasure.

## PRESIDENT’S ADVISORS



**GF JOAN  
SESSOMS FORD**  
(HOUSTON)



**GF CAROLE  
TEMPLE PHILLIPS**  
(BROOKLYN)



**GF CECILE  
KENNEDY  
SPRINGER**  
(PITTSBURGH)

GF Not Pictured: Kathy Taylor (Boston)



# HIGHLIGHTS 2014-2015

The Girl Friends Fund, Inc. (“The Fund”) is delighted to share a number of key accomplishments over the past year:

- **A**WARDED \$54,000 IN SCHOLARSHIP AWARDS
- **B**EGAN NEGOTIATIONS WITH A CORPORATE SPONSOR TO SECURE SUMMER EMPLOYMENT FOR SOME OF OUR SCHOLARS
- **S**ECURED TOTAL CONTRIBUTIONS OF OVER \$107,000 FOR THE PERIOD BETWEEN MAY 1, 2014 AND APRIL 30, 2015
- **R**ECEIVED A RECORD NUMBER OF DONATIONS FROM CHAPTERS OF THE GIRL FRIENDS®, INC.
- **H**ELD MONTHLY FUNDRAISING EVENTS BETWEEN DECEMBER AND MARCH WITH ST. JOHN OUTLETS THAT TRANSLATED INTO AN OVER \$2,000 GIVE BACK TO THE FUND
- **B**EGAN DISCUSSIONS WITH OTHER LUXURY BRANDS FOR FUTURE FUNDRAISING EVENTS
- **S**ECURED A RECORD \$20,000 IN REAL, AND IN KIND, CORPORATE SUPPORT
- **S**ECURED A CORPORATE SPONSOR FOR OUR ANNUAL FUNDRAISING LUNCHEON
- **S**ECURED A DONATION FROM THE DAVID YURMAN OUTLET, LAS VEGAS, VALUED AT OVER \$2,000 FOR THE SILENT AUCTION
- **S**ECURED DOUBLE THE NUMBER OF CONTRIBUTIONS TO THE SILENT AUCTION AS COMPARED TO 2014
- **G**REW THE GF ESTHER C. MARIONEUX ENDOWMENT FUND AS A RESULT OF ALTERNATIVE INVESTMENT DECISIONS
- **C**OMPLETED OUR BYLAW REVIEW AND RECOMMENDED AMENDMENTS TO OUR MEMBERSHIP
- **C**ONTINUED THE UPDATE OF POLICIES AND PROCEDURES
- **P**OPULATED SEVEN OF OUR COMMITTEES WITH 43 VOLUNTEER MEMBERS
- **E**STABLISHED FIVE NEW COMMITTEES - HISTORY UPDATE, LEGAL REVIEW, MARKETING, AND WEBSITE/INFORMATION TECHNOLOGY
- **S**IGNIFICANTLY REDUCED OUR EXPENSES AS THE RESULT OF THE CONTRIBUTED TALENT AND EXPERTISE OF OUR VOLUNTEERS
- **P**UBLISHED THREE NEWSLETTERS
- **E**STABLISHED MECHANISM TO COMMUNICATE DIRECTLY WITH ALL OF OUR MEMBERS VIA EMAIL
- **D**EVELOPED A NEW WEBSITE



# ABOUT THE GIRL FRIENDS FUND, INC.

The Girl Friends Fund, Inc. (The Fund) is a 501(c)(3) public charity whose primary charitable purpose is to provide financial assistance to worthy, low income, youth. Incorporated in 1988 by The Girl Friends®, Inc., and designated as a 501(c)(3) in 1989, The Fund is committed to eradicating income based inequalities in educational opportunities. In particular, The Fund recognizes the special importance of higher education for African-American highschool graduates.

The Fund was the brainchild of GF National Presidents Ersa Poston and Helen Wright. The vision of the The Fund was implemented under the leadership of National President, GF Konnetta Sparks and incorporated by a committed group of Girl Friends including GFs Eddie Bernice Johnson, Veronica Frazier, Sandra Sutton, Marguerite Williams, and Joan Sessoms Ford. GF Joan served as legal counsel and served on the board.

The initial board included GFs Rebecca Webster Kingslow, Paquita Attaway, Lucille Blondin, Joan Sessoms Ford, Irma Roy, Marguerite Rucker, Mae Johnson, Yvonne King Gloster, Cecile M. Springer and Margaret Bush Wilson, with Konnetta Sparks as an ex-officio member. The Fund was incorporated on February 22, 1988 and received its IRS tax exempt status in 1989 as a public charity.

GF Andrea L. Johnson is the Immediate Past President. The other Past Presidents are GFs Konnetta Sparks, Chrystine Shack, Helen Wright, Mirian C. Shropshire, Esther C. Marioneaux, Lynda Carroll, Phoebe A. Haddon, Carole T. Phillips, and Elaine Effort.

The The Fund began awarding scholarships to outstanding high school seniors in 1995 after its endowment grew to \$50,000. The Eunice Shreeves Luncheon, honoring the founder of The Girl Friends® Inc., and our Silent Auction are our annual fundraising efforts.

Since its inception, the Board of Directors has been comprised of dedicated volunteers who not only receive no compensation for their service, but also commit tremendous time and other resources in service to the The Fund.



# PAST PRESIDENTS OF THE GIRL FRIENDS FUND, INCORPORATED



**Andrea L. Johnson (California)**  
2012 – 2013



**Elaine Effort (Pittsburgh)**  
2010 – 2012



**Carole Temple Phillips (Brooklyn)**  
2007 – 2010



**Phoebe A. Haddon (Philadelphia)**  
2005 – 2007



**Lynda Carroll (New Orleans)**  
2002 - 2005



**Esther C. Marioneaux (Charlotte)**  
2000 – 2002



**Mirian C. Shropshire (Atlanta)**  
1995 - 2000



**Helen Keith Wright (Cleveland)**  
1992 – 1995



**Chrystine Shack (Memphis)**  
1989 – 1992



**Konnetta Sparks (New York)**  
1989 (Interim)





## COMMITTEE TO UPDATE HISTORY

This committee documents and updates the history and development of The Fund.

---



GF NINA FOXX  
(SAN DIEGO)



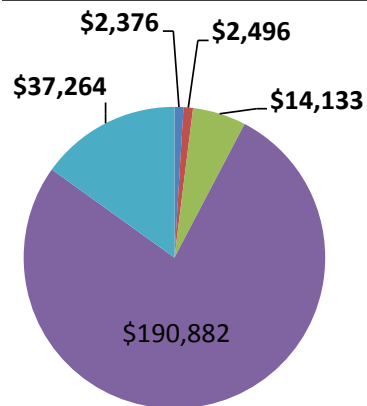
**GF's Not Pictured:** Sheila J. Williams (San Diego)

THE GIRL FRIENDS FUND, INC.

# AUDITED FINANCIAL REPORT EXTERNAL

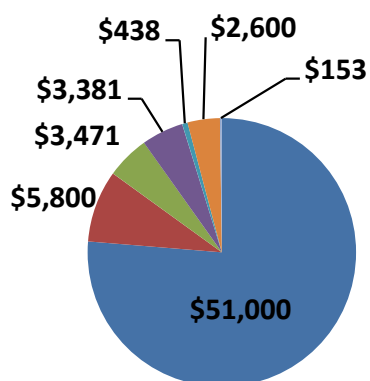
JULY 1, 2012 – JUNE 30, 2013

**Investments at 6/30/2014 -  
Total \$248,578**



- Cash
- Money market fund
- Mutual fund - equities
- Mutual fund - fixed income
- Mutual fund - real estate

**2013 Expense Detail -  
Total \$66,843**



- Scholarships
- Professional services
- Printing and postage
- Meetings/conference
- Insurance
- Website and internet
- Other expenses

## ASSETS

Cash and cash equivalents	\$147,226
Investments	\$247,151

## TOTAL ASSETS

\$394,377

## LIABILITIES

Accounts payable and accrued expenses	-
Scholarship award commitments- current	-

## Total Liabilities

-

## NET ASSETS

Unrestricted net assets	\$68,211
Temporarily restricted net assets	\$326,166
Permanently restricted net assets.	-

## Total Net Assets

\$394,377

## TOTAL LIABILITIES AND NET ASSETS

\$394,377

## REVENUE AND SUPPORT

Special event revenue	\$15,985
Less: costs of direct benefit to donors	(\$6,975)
Contributions	\$84,960
Investment return	(\$5,969)
Net assets released from restrictions	-

## Total Revenue and Support

\$88,001

## EXPENSES

Program services scholarships	\$51,000
Program activities	\$1,616
Supporting services management and general	\$6,391
Fundraising	\$7,836

## Total Expenses

\$66,843

## CHANGE IN NET ASSETS

\$21,158

## NET ASSETS

Beginning of year	\$373,219
End of year	\$394,377

THE GIRL FRIENDS FUND, INC.  
**AUDITED FINANCIAL  
 REPORT INTERNAL**  
 JULY 1, 2013 – JUNE 30, 2014

### ASSETS

Cash and cash equivalents	\$152,557
Investments	\$248,578

**TOTAL ASSETS** **\$401,136**

### LIABILITIES

Accounts payable and accrued expenses	-
Scholarship award commitments- current	-

**Total Liabilities** **-**

### NET ASSETS

Unrestricted net assets	\$52,935
Temporarily restricted net assets	\$348,200
Permanently restricted net assets.	-

**Total Net Assets** **\$401,136**

**TOTAL LIABILITIES AND NET ASSETS** **\$401,136**

### REVENUE AND SUPPORT

Special event revenue	\$10,566
Less: costs of direct benefit to donors	(\$4,552)
Contributions	\$94,108
Investment return	(\$1,426)
Net assets released from restrictions	-

**Total Revenue and Support** **\$101,549**

### EXPENSES

Program services scholarships	\$73,500
Program activities	-
Supporting services management and general	\$16,665
Fundraising	\$4,652

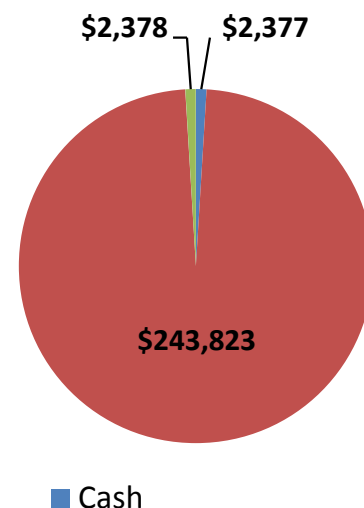
**Total Expenses** **\$94,790**

**CHANGE IN NET ASSETS** **\$6,759**

### NET ASSETS

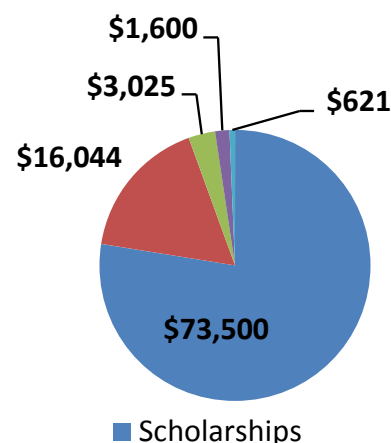
Beginning of year	\$394,377
End of year	\$401,136

**Investments at 6/30/2014 -  
Total \$248,578**



- Cash
- Money market fund

**2014 Expense Detail -  
Total \$94,790**



- Scholarships
- Professional services
- Printing and postage
- Website and internet
- Other expenses

# AUDIT/FINANCE COMMITTEE

This committee completes internal audits and tax requirements; guides financial decision making and investments; vets external auditor candidates.

---



GF PAMELA J.  
BOONE  
(BOSTON)  
CHAIR



GF LASHANA B.  
MORRIS  
(DURHAM)



GF FAYE OWENS  
(LOUISVILLE)



GF LISA SMITH  
(CALIFORNIA)



GF STASIA  
WASHINGTON  
(CALIFORNIA)



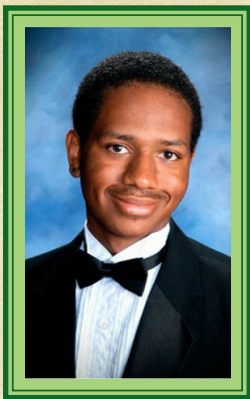
GF GRETA POPE  
WIMP  
(CHICAGO)

GFs Not Pictured: Carolle Jones Clay (Louisville), Joy Marshall (Fairfield County)



# SCHOLARSHIP RECIPIENTS

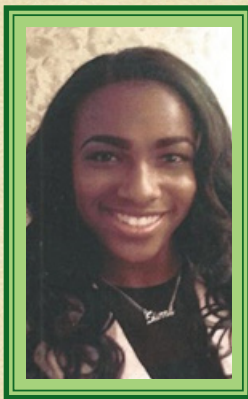
## 2015



**Sharmar Ballard**  
Norfolk  
Psychologist  
VCU  
*GF Carolyn M. Carter Scholar*



**William Blanton**  
Louisville  
Business  
Ownership  
Univ. of Kentucky



**Sierra Brown**  
Roanoke  
Comm.  
Entertainment  
VCU  
*GF Gwendolyn G. Johnson Scholar*



**Colasia Claxton**  
New Haven  
Business  
Univ. of Conn.  
*GF Carole Temple Phillips Scholar*



**Jada Irving**  
San Diego  
Orthopedic  
Surgeon  
Spelman College  
*GF Carolyn M. Carter Scholar*



**Brielle Jackson**  
Cleveland  
Physician  
Rice Univ.  
*GF Carolyn M. Carter Scholar*



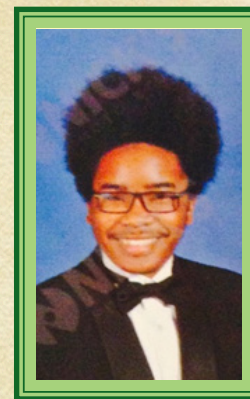
**Emerson Celeste Kearney**  
Cincinnati  
Law  
Dartmouth Univ.  
*GF Carolyn M. Carter Scholar*



**Tyra Searcy**  
St. Louis  
Broadcast  
Journalism  
Univ. of Florida  
*GF Gwendolyn G. Johnson Scholar*



**Taylor Thurman**  
New Jersey  
Communications  
Hofstra Univ.  
*GF Juanita Humphries Scholar*



**Ronniko Williams**  
Miami  
Film Director  
Univ. of Florida  
*Anita Peek Gilger Scholar*





# SCHOLARSHIP RECIPIENTS

## 1995 - Group 1

Rashunda Davis  
Shonda Feaster  
Kayenda Johnson  
Arnita Moore

Cleveland  
Philadelphia  
Baltimore  
Memphis

## 2002 - Group 8

Jody Arshimene  
Joy Bentley  
Jamille Lukes  
Krystal Reid  
Daniele Spears

Trenton  
New Jersey  
Albany  
Pittsburgh  
Fairfield County

## 1996 - Group 2

Ayanna Lyles  
Charissa Smith  
Melanie Price

Fairfeild  
Trenton  
California

## 2003 - Group 9

Precious Wilson  
Marie Porter  
Marquita Williams  
Janis Galloway

Durham  
Miami  
Columbus  
Norfolk

## 1997 - Group 3

Kamela Kuntz  
Teresa Washington  
Precious Williams

New Jersey  
Detroit  
St. Louis

## 2004 - Group 10

Matthew Mackey  
Vereaux Reynolds  
Janelle Coleman  
Zsa Zsa Booker  
Brittany Paige

Albany  
Pittsburgh  
Philadelphia  
Detroit  
Cleveland

## 1998 - Group 4

Forrestine Grisby  
Ty-Isha Jones  
LaTonia Monroe

Charlotte  
Norfolk  
Springfield

## 1999 - Group 5

Idaceen Christian  
Hillary Fowler  
Deborah Minor

Memphis  
Orlando  
Cleveland

## 2005 - Group 11

Fatimah Muhammad  
James Robinson  
Ishaah Murphy  
Brittany Clifton  
Reiah Etwaroo  
Diane Melville  
Rachelle Jones  
Cierra Witherspoon  
Aisha Harris  
Daniel DeVougas

Cleveland  
Memphis  
Buffalo  
Columbia  
New Jersey  
Miami  
Orlando  
Columbus  
New Haven  
Milwaukee

## 2000 - Group 6

Marian McElvoy  
Geneene Thompson  
Eric Russell

Baltimore  
Columbia  
Washington

## 2001 - Group 7

Lawanna Evans  
Martine Joseph  
Michelle Robinson  
Charlene Talbot

Dallas  
Miami  
Pittsburgh  
Orlando

## 2006 - Group 12

Sharla Berry  
La nesha Bridges  
Jessica Clinton

California  
Pittsburgh  
Miami



Shauna Edwards	Albany	Jeffeline Ermilus	Miami
Chavaughn Gibson	Cleveland	Shanise Edmond	Buffalo
Shellese Shemwell	Louisville	Timia Harris	Columbus
Monica Soloman	Orlando	Leah Jones	Cleveland
Charrice White	Memphis	Chasidy Lowe	Baltimore

## 2007 - Group 13

Ashley Bayton	Potomac	Toni Walker-Stanley	Trenton
Tiffany Graves	Cleveland	<i>GF Juanita P. Humphrey Scholar</i>	
Bennie Williams*	Buffalo	Brendon Taylor	Pittsburgh
Melisa Douge	Miami	<i>Anita Peek Gilger, MD Trust Scholar</i>	
Courtney Hubbard	Orlando	Chelsea Walker	Greenville
Bianca Stinney	Albany	Chelsea Zellar	Albany
Chanise Shepherd	Louisville		
Trevorlyn Anderson	New York	<b>2011 - Group 17</b>	

## 2008 - Group 14

Shauna Bowes	Miami	Shanellie Carrington	New Jersey
Adrian Caldwell	Greenville	Myriam Diomande	Albany
Monique Fortune	Philadelphia	<i>Anita Peek Gilger, MD Trust Scholar</i>	
<i>GF Juanita P. Humphrey Scholar</i>		Linette Dulue*	New Haven
Ashlie Graham	Buffalo	Ariel Foster	Miami
Kelly Harper	Potomac	Natacha Jerome*	Orlando
		<i>GF Carole Temple Phillips Scholar</i>	
Diamond Haynes	Cleveland	Veronica Johnson	Louisville
Briittany Sumner	Norfolk	Jasmine Jones	Roanoke
Briittany Wharry	Baltimore	Lauren Larkin	Cleveland
<i>Anita Peek Gilger, MD Trust Scholar</i>		Briana Nelson	Seattle

## 2009 - Group 15

Ariel Brown	Baltimore	Malena Price	Brooklyn
Bailey Brown	Fairfield County	Maya Wilson	Baltimore
GF Juanita P. Humphrey Scholar			
Jennifer Collins	Cleveland		
Vanessa LeBon	Miami	<b>2012 - Group 18</b>	
Noni Thomas	Dallas	Canedy Jordan Alexander	Cleveland
<i>Anita Peek Gilger, MD Trust Scholar</i>		Denisha Ivanna Bennett	Miami
Paige Tutt	Albany	Sha Ron DeBerry	Potomac
Monika Wiggins	Buffalo	Bria Green	Buffalo
Melody Williams	Orlando	<i>Anita Peek Gilger, MD Trust Scholar</i>	

## 2010 - Group 16

Arion Chapman      Potomac      Vanessa Marshall      Columbia

## 2011 - Group 17

Dafina Bobo	Minneapolis
Shanielle Carrington	New Jersey
Myriam Diomande	Albany
<i>Anita Peek Gilger, MD Trust Scholar</i>	
Linette Dulue*	New Haven
Ariel Foster	Miami
Natacha Jerome*	Orlando
<i>GF Carole Temple Phillips Scholar</i>	
Veronica Johnson	Louisville
Jasmine Jones	Roanoke
Lauren Larkin	Cleveland
Briana Nelson	Seattle
<i>GF Juanita P. Humphrey Scholar</i>	
Stephanie Osborne	Chicago
Malena Price	Brooklyn
Maya Wilson	Baltimore

## 2012 - Group 18

Canedy Jordan Alexander	Cleveland
Denisha Ivanna Bennett	Miami
Sha Ron DeBerry	Potomac
Bria Green	Buffalo
<i>Anita Peek Gilger, MD Trust Scholar</i>	
Nije Johnson	Pittsburgh
Taylor Gaines Johnson	Seattle
Vanessa Marshall	Columbia

*\*Denotes a one time additional award*



Raechel Mattison  
 Quishaun Murden  
 Diamond Pollard  
 Shelby Smith  
 Bria White  
 Edward Taylor  
*GF Juanita P. Humphrey Scholar*

Baltimore  
 Trenton  
 Roanoke  
 Albany  
 New Haven  
 Houston

Amanda Honeywell  
*Anita Peek Gilger, MD Trust Scholar*

Brooklyn

**GF Gwendolyn G. Johnson Scholars\***

Christopher Alexander Berry	Las Vegas
Ashleigh Bobbitt	New Jersey
Nia Coffey	Minneapolis/ St. Paul
Morgan Samantha Frances	Trenton
Terah Teresea Gamble	Greenville
Monique Christine McBride	Buffalo
Taylor Grace McKinnon	Boston
Kaila Natasha Williams	Baltimore

**2013 – Group 19**

La Darria Arnold  
*GF Juanita P. Humphrey Scholar*  
 Sydney Miray Harper  
 Brytney Taylor Humphries  
 Naima Rene Lamb  
 Jeremy Austin Ledbetter  
 Delenn Marie Lloyd-Latif  
 Judny Louis  
 Jermaine Medley  
 Monique Danielle Smith  
 Andre Scruggs  
 Jasmine Monique Terry  
 Adam Williams

Dallas  
 Potomac  
 Pittsburgh  
 California  
 Roanoke  
 Albany  
 Miami  
 Orlando  
 Seattle  
 Louisville  
 Cincinnati  
 Cleveland

**2014 – Group 20**

Christopher Adams	Seattle
<i>GF Juanita P. Humphrey Scholar</i>	
Tyler Ambrose	Roanoke
Joslyn Barnett	Cleveland
<i>Anita Peek Gilger, MD Trust Scholar</i>	
Katelyn Bynoe	Boston
<i>Gwendolyn G. Johnson Scholar</i>	
Anneliza Carey	Trenton
<i>Gwendolyn G. Johnson Scholar</i>	
Anya Hall	Miami

*\*These scholars convert to General Fund Scholars after first year of award.*





# NAMED SCHOLARSHIPS OF THE FUND



## GF CAROLYN M. CARTER MEMORIAL SCHOLARSHIP

The GF Carolyn M. Carter Memorial Scholarship was established in 2013 to support the undergraduate education of scholarly, high school graduates, particularly those with an interest in STEM. The \$1,500 award is renewable annually for up to four years. The award is also available to college juniors and/or seniors, in which case, \$3,000 may be awarded specifically to support their application to medical school. When awarded to juniors, it is renewable for one year. The scholarship was established by her daughter, GF Cindy Carter Cole.



## ANITA PEEK GILGER, MD TRUST

A 1941 graduate of The Johns Hopkins College of Medicine, Dr. Gilger, a Florida native, was a philanthropist and lover of the arts. She understood the challenges faced by low income students and ensured that they were among her beneficiaries. She named her friend, GF Helen Keith Wright (Cleveland), as one of her Trustees. Her Trust has been a significant donor to the GFF. In 2008, the Board of Directors established a scholarship in her name.



## GF JUANITA P. HUMPHREY

The GF Juanita P. Humphrey Scholarship was established in 2008 as the result of a donation from her estate. This was the largest one time donation received by the GFF. GF Juanita was a Life Member of the New Jersey Chapter of The Girl Friends®, Inc. She was a selfless mentor to many who benefitted significantly from the many talents she acquired in the span of 96 years. This award is presented to a student who has outstanding accomplishments and involvement in community activities as well as academic achievement.



## GF GWENDOLYN G. JOHNSON

The GF Gwendolyn G. Johnson Scholarship was established in 2013 by immediate Past President of The GFF, GF Andrea L. Johnson, in honor of her mother. The one-time \$1,000 award is granted to a high school graduate who has been accepted to a four-year institution and meets the additional criteria consistent with the GFF General Scholarship.



## GF CAROLE TEMPLE PHILLIPS

The GF Carole Temple Phillips Scholarship was established by the Board of Directors in 2010 as a one time \$1,000 award to commemorate the legacy of GF Carole's stalwart commitment to The Fund as its Leader. As a demonstration of her ongoing commitment to The Fund and its mission, in 2014 GF Carole converted this to a recurring scholarship.

# SCHOLARSHIP COMMITTEE

This committee documents and updates the history and development of The Fund.

---



GF SHEILAH  
SHAW HORTON  
(BALTIMORE)  
CHAIR



GF RICHARDENE  
BREWER  
(CALIFORNIA)



GF SONYA  
GOLDSBORO  
(LAS VEGAS)



GF CASMA HUIE  
(POTOMAC)



GF DANA K. RICE  
(DETROIT)



GF NEDRA  
STARLING  
(CLEVELAND)



GF FAYE OWENS  
(LOUISVILLE)



GF JANET  
PALMER OWENS  
(BOSTON)

# GF EUNICE SHREEVES LUNCHEON COMMITTEE

This committee coordinates this annual fundraising event; negotiates with relevant venues, tracks ticket sales, assigns tables, creates centerpieces and develops program.

---



GF CECELIA B.  
HENDERSON  
(BUFFALO)



GF JACQUELINE F.  
BONTEMPS  
(NEWPORT NEWS)



GF CHERYL  
FINLEY  
(NEW YORK)



GF SONYA  
GOLDSBORO  
(LAS VEGAS)



GF CASMA HUIE  
(POTOMAC)



GF FAYE OWENS  
(LOUISVILLE)



GF SHUANA  
TUCKER SIMS  
(NEW HAVEN)



GF BETTYJEAN  
WILKINSON  
(LAS VEGAS)



# SILENT AUCTION COMMITTEE

This committee solicits items for our annual Silent Auction that generate excitement and executes the Auction in a manner consistent with our policy.



GF SONYA  
GOLDSBORO  
(LAS VEGAS)  
CHAIR



GF KENADIE  
COBBIN-  
RICHARDSON  
(LAS VEGAS)



GF SUZETTE  
SCARVER DAVE  
(COLUMBUS)



GF JACQUELYN  
DAWSON  
(LAS VEGAS)



GF CHERYL  
FINLEY  
(NEW YORK)



GF TANYA  
FLANAGAN  
(LAS VEGAS)



GF CASMA HUIE  
(POTOMAC)



GF DANNETTE  
MITCHELL  
(LAS VEGAS)



GF AVIS  
O'BRYANT CHANEY  
(LAS VEGAS)



GF FAYE OWENS  
(LOUISVILLE)



GF QUINCELLA  
RIVERS  
(LAS VEGAS)



GF SHUANA  
TUCKER SIMS  
(NEW HAVEN)



GF BETTYJEAN  
WILKINSON  
(LAS VEGAS)

GFs Not Pictured: Nicole Knight (Las Vegas)



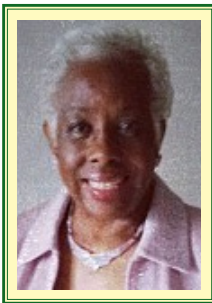
# FUNDRAISING COMMITTEE

This committee raises money in traditional and nontraditional ways, thinking 'outside the box' to appeal to members and the general public.

---



GF CHERYL FINLEY  
(NEW FINLEY)  
CHAIR



GF GWENDOLYN  
L. CHATTMAN  
(ALBANY)



GF MICHELLE  
E. RICHARDSON  
(NEW JERSEY)



GF KAREN  
HOLMES WARD  
(BOSTON)



GF GRETA POPE  
WIMP  
(CHICAGO)

# DREAM BUILDERS

## GF Dede & BF Dallas A. Lea, MD

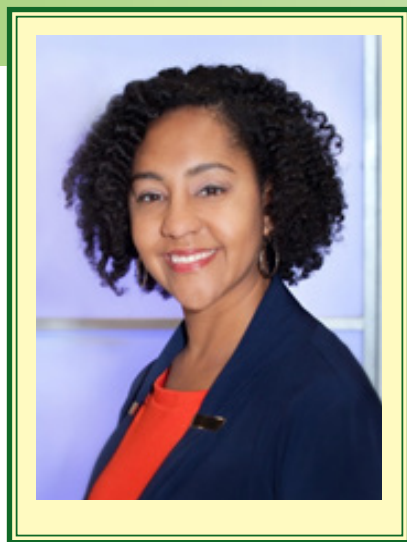


GF Dede and her husband, BF Dallas A. Lea, II, MD live in Chevy Chase, Maryland with their two sons, Dallas III and Daniel. BF Dallas is the President and Managing Partner of Lea Medical Therapies and GF Dede is the Executive Vice President of Global Government Relations for media giant, Viacom.

In addition to The Girl Friends Fund, Inc., GF Dede and BF Dallas have contributed to many philanthropic organizations over the years, including supporting the construction of a hospital in Uganda, and establishing a science and technology center for children at Change Happens, a Houston area community center for at risk youth and adults. In addition, they currently support the development of an outpatient surgical center in Guatemala with the Exodo Foundation, an organization started in the 1980's by DeDe's mother", Norma Ferrell.

BF Dallas is a member of the Clinical Advisory Board and Speaker's Bureau for pharmaceutical company, Allergan. In addition, he is Chief Medical Advisor for BLH Technologies, an international public health and technology company. GF DeDe is on the board for the T. Howard Foundation, an organization that helps minority college students obtain internships in the media industry. GF Dede is a member of the Potomac Chapter of The Girl Friends®, Inc.

## EMC<sup>2</sup> CORPORATION Jessica Anderson, Director Community Involvement



Jessica Anderson is a community-oriented professional and the current Director of Community Involvement for EMC<sup>2</sup> Corporation, a global leader in Information Technology. In this capacity, she leads EMC's corporate giving and employee volunteer programs across the globe.

Prior to joining EMC in 2008, Jessica managed a certified nursing assistant training program for the American Red Cross of Massachusetts Bay in their Health Care Training Department. In this role, she worked with low to moderate income women to help them achieve their goal of better employment.

Jessica also has experience in educational administration as a university-level Program Coordinator for Multicultural Affairs, a Posse Mentor for The Posse Foundation, and as leader of a volunteer service program where students traveled domestically and abroad to give back.

She attended DePauw University, receiving a B.A. in Communication Arts & Sciences, and Emerson College, where she received her M.A. in Organizational

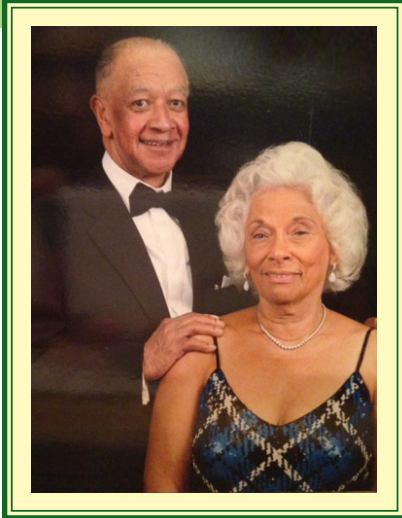
& Corporate Communications.

Jessica recently completed two terms on the board of Big Brothers Big Sisters of Central MA/MetroWest. She currently resides in Sharon, Massachusetts with her husband, Robert, and son, Robert Hamilton.

EMC<sup>2</sup> is a global leader in enabling businesses and service providers to transform their operations and deliver information technology as a service (ITaaS). Through innovative products and services, EMC accelerates the journey to cloud computing, helping IT departments to store, manage, protect and analyze their most valuable asset—information—in a more agile, trusted and cost-efficient way.

# DREAM BUILDERS

## GF Sylvia & BF Robert L. Simmons, MD



GF Sylvia Simmons served on the Board of Directors of The Fund between 2007 and 2013. During her six year tenure, she raised well over \$40,000 for The Fund, making her among the most prolific fundraisers in The Fund's history. Despite the completion of her second and final term on the Board of Directors, GF Sylvia continues her fundraising efforts to the tune of a minimum of \$7,000 annually. She solicits within and outside of our circle of Girl Friendship, including corporations. Well known in the Washington, DC Metropolitan Area for their philanthropy, GF Sylvia and her BF make a substantial personal donation each year, in addition to solicitation.

BF Robert and GF Sylvia have four children; GF Leslie Simmons-Warner, an Obstetrician/Gynecologist, two sons who are Lawyers and one son who is a Corporate Officer for American Airlines. They have five Grand Children.

BF Robert Simmons is Professor Emeritus of Surgery/Cardio-Thoracic, Howard University and recently retired as Sr. Vice-President Medical Affairs, Providence Hospital, Washington, DC. They now enjoy spending most of the winter months at their Beach home in Puerto Vallarta, Mexico

## GF Jacquelyn C. Shropshire



GF Jacquelyn Calloway Shropshire is an accomplished career woman, philanthropic board member, fundraiser, community service volunteer, and entrepreneur. She started her career as the first African-American employee in an administrative position with Trans World Airlines. She was a teacher in the Kansas City Public School System who later taught in the New York Public Schools. She earned a BS from Lincoln University and a MS in education from Hunter College.

GF Jacquelyn married Thomas Shropshire in 1961. They later moved to Nigeria where BF Tom was Corporate Vice President of Phillip Morris. There she helped organize the first American Women's Club and she founded and served as editor-in-chief of "Fancy That" a newsletter for women. The Shropshires moved from Nigeria to Milwaukee, Wisconsin where GF Shropshire began 30 years of service with the Milwaukee Urban League. Additionally, she founded and led

Momentum Unlimited of Milwaukee, a firm specializing in management development, public relations and special event planning. GF Jacquelyn is an active Life Member of Alpha Kappa Alpha Sorority, Inc., The Links, Inc; The Girl Friends®, Inc (Las Vegas); and Life Member, National Council of Negro Women. She has received numerous awards and has served on countless boards.

GF Jacquelyn has a son, attorney Thomas B. Shropshire Jr; a daughter, film editor GF Terilyn A. Shropshire (California); and two granddaughters Bailey Elizabeth and Emily Kate.





# GF ESTHER C. MARIGONEAUX ENDOWMENT FUND

## 2015 DONATIONS

GF Esther C. Marigoneaux was a visionary who stood at the helm of the GFF as President between 2000 and 2002. She had the foresight to establish an endowment fund in 2002 with hopes that it would come to provide a constant revenue stream for GFF Scholarships. She asked each GF to make a one time donation of \$250. GF Lynda Carroll followed in GF Esther's footsteps with lofty ideas of her own. Under her leadership, the fund was named in honor of GF Esther and a medallion was designed for presentation to each GF who made the requisite contribution. These became "members" of the GF Esther C. Marigoneaux Endowment Fund (ECMF) and their names were inscribed on plaques displayed at the GFF Annual Meeting. In response to her desire to honor donations to the ECMF beyond that initially requested, during her tenure as President, GF Carole Temple Phillips established the ECMF Certificate.

Since 2002, membership in the ECMF has grown to over 300 individuals and 24 chapters of The Girl Friends®, Inc. The ECMF Presentation of Awards remains a sacred celebration of GF Esther and is conducted during the GFF Annual Meeting. Plaques continue to be displayed.

**GF Barbara W. Alston** (*Charlotte*)\*

**GF Janet C. Archer** (*Buffalo*)\*

**GF Melissa Archer** (*Buffalo*)\*

**GF Lillian McLean Beard** (*Potomac*)

**GF LaVerne Nichols Boyd** (*Cleveland*)\*

**GF Cindy Carter Cole in Celebration of:**

**GF Pamela J. Boone** (*Boston*)\*

**GF Keree Brannen** (*Orlando*)\*

**GF Jodi Gallman** (*Columbia*)\*

**GF Sheilah Shaw Horton** (*Baltimore*)\*

**GF Gygi Jennings** (*New Haven*)\*

**GF Anne Simmons** (*New York*)\*

**GF Gwendolyn L. Chattman** (*Albany*)\*

**GF Margaret Falkener DeLorme** (*Washington*) \*

**GF Caroline Taylor Ellerson** (*New York*)\* in Love and Girl Friendship to Mom, **GF Kathy Taylor** (*Boston*)

**GF Sonya Goldsboro** (*Las Vegas*)\*

**GF Shirley J. Hughes** (*Minneapolis/St. Paul*)\*

**GF Tina Lewis** (*Las Vegas*)

**GF Emmekunla Nylander** (*Buffalo*)\*

**GF Deborah L. Perry** (*Pittsburgh*)\*

**GF Marie Ray Scott** (*Las Vegas*)\*

**GF Terilyn A. Shropshire** in celebration of the birthday of Mother, **GF Jacquelyn Shropshire** (*Las Vegas*)

**GF Nedra Starling** (*Cleveland*)\*

**GF Inez Thomas** (*San Diego*)

**Roanoke Chapter of The Girl Friends®, Inc.**

\*Denotes new member

### CHAPTERS

Albany  
Atlanta  
Birmingham  
Boston  
Buffalo  
Cincinnati  
Cleveland  
Columbia  
Durham  
Louisville  
Memphis  
Miami  
New Jersey

New Haven  
New York  
Newport News  
Norfolk  
Orlando  
Philadelphia  
Richmond  
Seattle  
St. Louis  
Roanoke  
Washington

### MEMBERS

Debra Marigoneaux Allen  
Jennifer D. Alston-Sako

Bert Asbury  
Paquita Harris Attaway  
Gail Bailey  
Cynthia Ackron Baldwin  
Faustina Balthazar-Rucker  
Lynne Rosewald Bannister  
Cecelia Powell Barnes  
Angela Bass  
Lillian McLean Beard  
Patricia Beckett  
Mary D. Bell  
Roslyn Bell  
Robin Belle  
Betty Ann Belle

Michelle Bernard  
Nesta Bernard  
Angela McAlister Berry  
Daryl Jerome Berry  
Angela Blayton  
Anita Bond  
Jacqueline Bontemps  
Georgia Booker  
Kelly Booker  
Pamela J. Boone  
Dorothy Bostic  
LaVerne Nichols Boyd  
Keree Brannen  
Elba "Tina" Brewer  
Betty Brinson  
Christina Brown Bristol  
Cheryl Whiteman Brooks  
Alma Brown  
Alma Arrington Brown  
Antoinette Brown  
Beulah Brown  
Carol N. Brown  
Gloria Brown  
J. Melva Brown  
Joy San Walker Brown  
Juanita Washington Brown  
Melva Brown  
Virginia Lewis Brown  
Betty Bell Browne  
Carol Bryant  
Vicki C. Bryant  
Janice Burks  
Teresa A. Burr  
Evelyn Burton  
Jean Clarkson Butler  
Lynda Perry Carroll  
Carolyn M. Carter  
Cynthia S. Carter  
Irene Carter  
Jonita Carter  
Gwendolyn L. Chattman  
Mary Johnson Childs  
Doris Ford Chisolm  
Kim Clark  
Donna Coaxum  
Anita Cox Cobb  
Barbara Bell Coleman  
Barbara Bryce Coleman  
Yolanda Coleman  
Eleanor O'Banyoun Collins  
Michelle L. Collins  
B. Stephanie Commander  
Forrestine "Tina" Coombs  
Cheryl Cooper  
Melva B. Copes  
Betty Corbitt  
Stacee Crittenden  
Brenda Culp

Daryl Dance  
Suzette Scarver Dave  
Joan Spence Davis  
Sandra Days  
Mwendwa Denee  
Maria DeLongoria  
Pamela DeLongoria  
Margaret Falkener DeLorme  
Charlyne Dickerson  
Shauna Ryder Diggs  
Katherine Dockens  
Daisy Douglas  
Laura M. Douglas  
Dorothy Dowdye  
Muriel J. Drew  
Sandra Driver  
Nina Kenney Dunn  
Elaine Effort  
Joan Eldridge  
Caroline Taylor Ellerson  
Deanne Hope Emerson  
Cecelia Epperson  
Hazelle Ferguson  
Scyla Murray Fernandez  
Cheryl Finley  
Hillarie Flood  
Joan Sessoms Ford  
Margaret E. Foster Franklin  
Veronica Marshall Frazier  
Shirley D. Freeman  
Margaret Gaines-Clark  
Kitty Gardiner  
Connie Gee  
Mary Beaudoin Gibbons  
Nanette Binford Gibson  
Sonya Goldsboro  
Tiffini Greene  
Phoebe A. Haddon  
Maeble Hairston  
Dela Hale  
Joan Hall  
Lyn Hamlin  
Janie Greenwood Harris  
Robin Leach Harris  
Sharon Harris  
Lucille Brinson Harper  
Jacquelyn T. Hartley  
Toni D. V. Hawkins-Bennett  
Margaret Haynes  
Stacy Haynes-Nelson  
Cecelia B. Henderson  
Charlotte Henderson  
Julia H. Henderson  
Gwen Hicks  
Jessica Hicks  
Imogen Hines  
Harriet D. Hobson  
Olga Holt

Joan Willis Holton  
Ruby Homayssi  
Helen Hopson  
Deanna Ford Horton  
Royalyne Hourihan  
Dolores B. Hudson  
Alice K. Houston  
Agatha Howard  
Shirley J. Hughes  
Casma Huie  
Myrtle J. Humphrey  
Annie Hunter  
Carol Iglesias  
Joan James  
Daisy Jeffries  
Alexine Johnson  
Audrey E. Jackson  
Debbie C. Jackson  
Emily Jackson  
Valerie J. Branch Jackson  
Joan James  
Daisy Jeffries  
Andrea L. Johnson  
Eddie Bernice Johnson  
Erica Nicole Johnson  
Ernestine Norwood Johnson  
Evelyn Johnson  
Joan Arrington Johnson  
Mae Coleman Johnson  
Tamara Harris Johnson  
Laren Jones  
Leslie Davis Jones  
Roselyn Jones  
Shirley Jones  
Carolyn Lamar Jordan  
Margaret H. Jordan  
Anona Joseph  
LeVerene Kelley  
Cynthia Kelly  
Elsie B. Kennedy  
LaVerne Dukes King  
Kathleen C. A. Knight  
Betty Kolb  
Debra Lamb  
Barbara M. Lanier  
Carolyn Contee-Lassiter  
Dede Lea  
Jean Leach  
Melanie B. Leak  
Kimberly Leslie-Patton  
Donna Lewis  
Lynn Lewis  
Tina Lewis  
Charisse Lillie  
Eveline Lloyd  
Rhea Lloyd  
Edna Center Lofton



Vada Love  
Jenny Lovell  
Lori Helen Luis  
Andre Mahone  
Andrea T. Mahone  
Teri Mallett  
Stephanie J. Marioneaux  
Esther Commander Marioneaux  
Anita Marioneaux Martinez  
Barbara Mason  
Lorraine Matthews  
Betty D. McClain  
Belma McClaskey  
Sylvia McKinney  
Juanita D. Melford  
Terrelle Mitchell  
Margaret Moore  
Margaret Turman Moreland  
Thelma Morris  
Jessica L. Morse  
Carolyn Lewis Mosby  
Sandra L. Murdock  
Maria Murphy  
Maria D. Murphy  
Pamela Elizabeth Murphy  
Jo Foster Murray  
Ellen Bentley Nash  
Antoinette Johnson Neals  
Carol Neyland  
Lisa A. Nichols  
Gladys E. Nichols  
Lynell C. Nunn  
Emmekunla Nylander  
Phyllis Osbourne  
Julie Othman  
Faye D. Owens  
Maxine Owens  
Cheryl Parker  
Gwendolyn Pearson  
Sandra Pemberton  
Deborah L. Perry  
Ruth L. Pettis  
Alona Phillips  
Carole Temple Phillips  
Elyse Phillips  
Martha D. Phillips  
Neil Foster Phillips  
Aurelius H. Pitts  
Marie Pogue  
Heather Poladian  
Mildred Pollard  
Josephine Poindexter  
Camille Porter  
Marie E. Porter

Ersa Hines Poston  
Joyce Price  
Marion Proffitt  
Dorothy Pryor  
Shirley Williams Purvis  
Eleanor Quash  
Joyce Ford Quick  
Sharon Rencher  
Barbara Rice  
Carolyn Rice  
Michelle Richardson  
Joan Belle Ricks  
Vera Riddick  
Ida Risbrook  
Emma Roberts  
Agnes G. Robinson  
Alexis B. Robinson  
Irene O'Banyoun Robinson  
Sylvia K. Robinson  
Lynne Williamson Rogers  
Marcia Boddy Rogue  
Georgia Tallier Russan  
Dorothea Moore Saunders  
Leslie Joy Sawyer  
Darlene Jeffries Schaller  
Brenda Scott  
Marie Ray Scott  
Karen Selsey  
Nancy Sergile  
Ann Sewell  
Joyce Sewell  
E. Christine Ramsey Shack  
Florence Sharpless  
Juanita Shavers  
Benita F. Shobe  
Tamara Torbert  
Nancy Sergile  
Jacqueline Shropshire  
Mirian Shropshire  
Terilyn Shropshire  
Karen F. Shirley  
Anne Simmons  
Gwen Simmons  
Leslie Simmons  
Sylvia A. Simmons  
Barbara Simpkins  
Rosalind Sims  
Rose Singley  
Marzetta F. Sinkler  
Grace Hopson Smith  
Racheal Norcom Smith  
Grace Hopson Smith  
Monica Smith  
Shirley Powe Smith

Brenda Snead  
Konetta Sparks  
Virginia Scott Speller  
Sharon A. Spencer  
Cheryl Spicer-Bryant  
Cecile Kennedy Springer  
Donna Sprott  
Cheryl Stanley  
Nedra Starling  
Clotilde Stenson  
Lisa Stenson- Desamours  
Cheryl L. Steward  
Marilyn Strong  
Myrna Symes  
Ruthie Ida Tate  
Paula Whitfield Taylor  
Phyllis Taylor  
Betty Wimberly Thomas  
D. Conrada Gill Thomas  
Inez Thomas  
Lydia Thomas  
Claudia Thompson  
Jackie Threadgill  
Deanna Shobe Tinsley  
Shirley Tolentino  
Cecile Tolliver  
Winifred Veronica Torbet  
Chaton T. Turner  
Marita Turner  
Oddis Calvin Turner  
Barbara Robinson Utterback  
Janice Valentine  
Emma S. Walker  
Karen Hodges Walker  
Shirley Walker  
Valaida Walker  
C. Linda Waples  
Barbara Weaver Ward  
Ava F. Washington  
Daryl Jordan Washington  
Barbara Lord Watkins  
Bessie H. S. Weaver  
Jacquelyn Hartley White  
Nola Lancaster Whiteman  
Alease Williams  
Doris Williams  
Esther Williams  
Frances Williams  
Julia Williams  
Marguerite L. Williams  
Donna Wilson  
Shelia Wilson  
Margaret Bush Wilson

# THE MEMBER AND CHAPTER CHALLENGE

The Fund challenged Chapters of The Girl Friends®, Incorporated and our members to contribute to the Fund. The results were phenomenal!

## THE MEMBER CHALLENGE

And the winner is . . . Buffalo! Buffalo is our hands down leader with 99% of its members contributing! Boston, Detroit, Roanoke, Springfield and Trenton made truly impressive showing with 75% or more of their members accepting the challenge!

## THE CHAPTER CHALLENGE

25 chapters answered our call and in an unprecedented fashion! A total of \$19,721 was raised as the result of Chapter support, enough to fund more than three scholarships over four years! Not only did chapters support The Fund in a more robust manner, but Loudoun County, one of our newest chapter, joined the other supporting chapters for the first time!

BOSTON

BUFFALO

CALIFORNIA

CHICAGO

CINCINNATI

CLEVELAND

COLUMBIA

DETROIT

DURHAM

FAIRFIELD COUNTY

GREENVILLE

LAS VEGAS

LOUDOUN COUNTY

LOUISVILLE

MEMPHIS

MIAMI

MINNEAPOLIS/ST. PAUL

NEW JERSEY

NEW YORK

NEWPORT NEWS

PHILADELPHIA

POTOMAC

ORLANDO

ROANOKE

SAN DIEGO

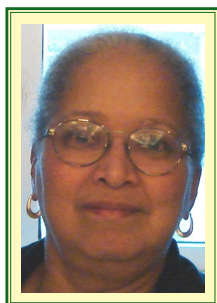
SEATTLE

TRENTON

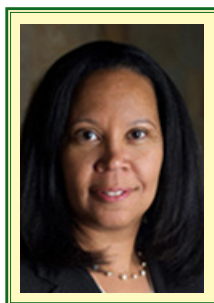


# COMMUNICATIONS COMMITTEE

This Committee produces the newsletter and press releases; works closely with Marketing Committee.



GF NEDRA  
STARLING  
(CLEVELAND)  
CHAIR



GF SHEILAH  
SHAW HORTON  
(BALTIMORE)



GF MICHELLE E.  
RICHADSON  
(NEW JERSEY)

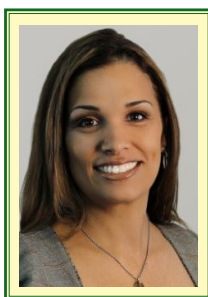
GF Not Pictured: Gail Jackson-Blount

# WEBSITE/INFORMATION TECHNOLOGY COMMITTEE

This committee maintains, updates and makes suggestions to improve the website.



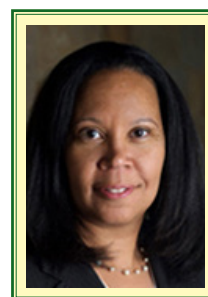
GF MICHELLE E.  
RICHADSON  
(NEW JERSEY)  
CHAIR



GF KEREE  
BRANNEN  
(ORLANDO)  
CO-CHAIR



GF AYESHA  
FAINES  
(NEW JERSEY)



GF SHEILAH  
SHAW HORTON  
(BALTIMORE)



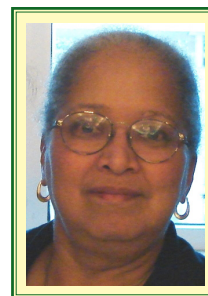
GF LYNN PETERS  
LEWIS  
(NEW JERSEY)



GF TIFFANY  
PERKINS MUNN  
(NEW JERSEY)



GF KIM SAVOY  
(BOSTON)



GF NEDRA  
STARLING  
(CLEVELAND)

# MARKETING COMMITTEE

This committee crafts language and communication with members and the public to increase awareness and attention, including marketing/promotional language for website; develops campaigns, taglines, fundraisers and a variety of tools for promotion and outreach.



GF JANICE  
COSBY BRIDGES  
(DETROIT)



GF CHERYL  
WHITEMAN  
BROOKS  
(BROOKLYN)



GF LISA  
HARRISON-HALL  
(NEW HAVEN)



GF GAIL RILEY  
KENNEY  
(DALLAS)



GF BEVERLY  
MARSHALL  
(ORLANDO)



GF PAULA JAMES  
NAILOR  
(NEW YORK)



GF ANNE  
SIMMONS  
(NEW YORK)

**GFs Not Pictured:** Michele W. Greene (*Loudoun County*), Gail Jackson-Blount (*Boston*), Ernestine Randall Smith (*Boston*)

# LEGAL REVIEW COMMITTEE

This committee reviews bylaws, policies & procedures, contracts/agreements; assists in the development of proposed amendments; researches and monitors applicable law.



GF LAVERNE  
NICHOLS BOYD  
(CLEVELAND)  
CHAIR



GF DERYL  
BROWN-ARCHIE  
(SEATTLE)



GF KARMA  
RODGERS  
BUTLER  
(MILWAUKEE)



GF DONNA  
COAXUMC  
(CHICAGO)



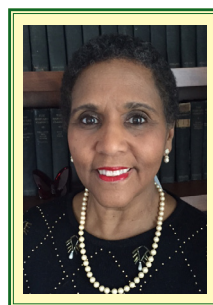
GF GAIL ASH  
DOTSON  
(MIAMA)



GF JOAN  
SESSOMS FORD  
(HOUSTON)



GF CHARISSE R.  
LILLIE  
(PHILEDELPHIA)



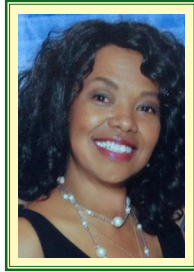
GF JUANITA  
TEMPLE  
(CHICAGO)

**GF's Not Pictured:** Cherie A. Enge (*San Diego*), Maebel Hairston (*New Jersey*), Janie Greenwood Harris (*Nashville*), Judith Hightower-Mills (*Seattle*), Patricia Hardiman Long (*Boston*), Miriam Martin-Clark (*Detroit*), Joyce Moorehead (*Potomac*), Chrystie Boucree Price (*New York*), Lyn A. Simmons-Jones (*Norfolk*), Frances Dyer Stewart (*Durham*), Marquette Stewart-Brown (*San Diego*), Cheryl Sueing-Jones (*San Diego*)



# NOMINATING COMMITTEE

This three member committee creates a slate of candidates to fill vacant offices on the Board of Directors. Membership is limited to Board Members.



GF DEBORAH L.  
PERRY  
(PITTSBURGH)  
CHAIR

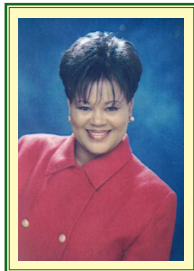


GF LYNN  
PETERS LEWIS  
(NEW JERSEY)



GF FAYE OWEN  
(LOUISVILLE)

This committee recruits members of The Fund to develop a slate of candidates to fill vacancies on the Board that are created as the result of the completion of terms of service. The Chair and the President discuss the needs of expertise on the Board and the Chair recruits members who meet those needs.



GF JODI  
GALLMAN  
(COLUMBIA)  
CHAIR



GF KIM  
CRAWFORD  
(BOSTON)



GF KIMMIE  
JACKSON  
(BOSTON)



GF TAMMY  
RUTHERFORD  
(COLUMBIA)



GF TERILYN  
SHROPSHIRE  
(CALIFORNIA)

**GFs Not Pictured:** Thelmetia Bynum (Charlotte), Alona Phillips (Washington)



# GENERAL SCHOLARSHIP FUND

MAY 1, 2014 – APRIL 30, 2015

## CONTRIBUTIONS TO THE GIRL FRIENDS FUND, INC. GENERAL SCHOLARSHIP FUND

### VISIONAIRES (\$15,000 – \$24,999)

#### COSMEDICDERM

##### GF CAROLYN M. CARTER SCHOLARSHIP

The Boston Chapter of The Girl Friends®, Inc. \* Dr. Elizabeth Alexander \* GF Kaye Long Allen (Boston)  
GF Mildred Anglin (Boston) \* Mrs. JoAnne Bates \* GF Nina Bowman (Boston) \* GF Leera Briceno (Boston)  
GF Michele Courton Brown (Boston) \* GF Kimberly S. Budd (Boston) \* Dr. Tamara Cadet  
GF Cindy Carter Cole (Boston) \* Mr. & Mrs. Gerald Chertavian \* Mrs. Mary O. Cooper  
GF Kim Ware Crawford (Boston) \* Mrs. Claudette Crouse \* Mrs. Barbara Cruz \* Mr. & Mrs. Kevin Dasilva  
Mr. & Mrs. Ronald Davenport, Sr. \* Eastern Bank \* GF Rosa Edwards (New Orleans)  
GF Cheryl Finley (New York) \* GF Lisa Lennon (Cincinnati) \* GF Hillarie A. Flood (Potomac)  
GF Margot Minns Flood (Durham) \* Dr. & Mrs. Clifford Grayer \* Mrs. Alicia Fenton Greenaway  
Mrs. Donna L. Hardy \* GF Carol Y. Kelley (Boston) \* GF Dede and BF Dallas Lea (Potomac) \* Mr & Mrs. Alfred Litte, Jr.  
GF Vada Love (Columbia) \* Mrs. Veronica Lytle \* Mr. & Mrs. Demond Martin \* Mrs. Juliette Mayers  
GF Angela Motley (Boston) \* OneUnited Bank \* GF Janet Palmer Owens (Boston) \* GF Joyce Price (St. Louis)  
GF Kimberly Rawlins (Boston) \* James L. Shepherd, MD \* GF Jennifer Smith-Williams (Boston)  
GF Kathy Taylor (Boston) \* GF Kim Thornton \* GF Kathryn Long Thurman (Boston) \* GF Karen Holmes Ward (Boston)  
Dr. & Mrs. Augustus White \* Mrs. Merele Williams Adkins \* Mrs. Benaree P. Wiley

### DREAMWEAVERS (\$ 10,000 – \$ 14,999)

#### DONATIONS OF GIRL FRIENDS FUND, INC. MEMBERS BY CHAPTER OF THE GIRL FRIENDS®, INC.

**Potomac** ~ Chapter Donation \* Hillarie A. Flood \* Tiffini Greene \* Casma Huie \* Dede Lea  
Eleanor Quash \* Marita Turner \* Claudia C. Thompson \* Sylvia Simmons

#### NON-MEMBERS/CORPORATIONS/FOUNDATIONS/TRUSTS

##### ANITA PEEK GILGER, MD TRUST

### PATRONS (\$ 5,000 – \$ 9,999)

#### INDIVIDUAL MEMBERS OF THE GIRL FRIENDS FUND, INCORPORATED IN MEMORIAM

**GF Dede and BF Dallas Lea (Potomac)** In Memory of Aunt, GF Carolyn M. Carter (Life)

**GF Jacquelyn C. Shropshire (Las Vegas)** In Memory of Husband, BF Thomas B. Shropshire, Sr.

## DONATIONS OF GIRL FRIENDS FUND, INC. MEMBERS BY CHAPTER OF THE GIRL FRIENDS®, INC.

**Boston** ~ Chapter Donation \* Kaye Long Allen \* Mildred Anglin \* Rebecca McLeod Barnett  
Geraldine Bolden \* Nina Bowman \* Leera Briceno \* Michele Courton Brown \* Kimberly S. Budd  
Cindy Carter Cole \* Kim Ware Crawford \* Estelle Hector \* Louise S. Johnson \* Carol Y. Kelley \* Mallika Marshall  
Angela Motley \* Janet Palmer Owens \* Kimberly Rawlins \* Ernestine Randall Smith \* Jennifer Smith-Williams  
Kathy Taylor \* Kim Thornton \* Kathryn Long Thurman \* Karen Holmes Ward  
**Las Vegas** ~ Chapter Donation \* Tanya P. Flanagan \* Kathleen Turner Knight  
Danette Mitchell \* Marie Ray Scott \* Jacquelyn C. Shropshire \* Josephine Washington  
Harriett Watson \* Bettyjean Wilkinson

## NON-MEMBERS/CORPORATIONS/FOUNDATIONS/TRUSTS

**EMC<sup>2</sup> CORPORATION \* ST. JOHN KNITS OUTLETS**

## BENEFACTORS (\$1,000 - \$4,999)

### INDIVIDUAL MEMBERS OF THE GIRL FRIENDS FUND, INCORPORATED

Cindy Carter Cole (Boston) \* Casma Huie (Potomac) \* Lisa Lennon (Cincinnati)  
Carole Temple Phillips (Brooklyn) \* Michelle Richardson (New Jersey)  
GF Sylvia and BF Robert Simmons (Potomac) \* Josephine Washington (Las Vegas)

## IN MEMORIAM

**Mother, GF Carolyn M. Carter (Life)** from GF Cindy Carter Cole (Boston)  
**Mother, GF Lillian Gregory (Cleveland)** from GF Casma Huie (Potomac)  
**BF Michael Washington** from Your GF, GF Josephine Washington (Las Vegas)  
**BF John Attaway (Washington)** from GF Sylvia and BF Robert Simmons (Potomac)

## DONATIONS BY CHAPTERS OF THE GIRL FRIENDS®, INC.

**Boston \* Cincinnati \* Cleveland \* Detroit \* Louisville \* Miami  
Minneapolis/St. Paul \* Nashville \* Orlando \* Potomac \* Seattle**

## DONATIONS OF GIRL FRIENDS FUND, INC. MEMBERS BY CHAPTER OF THE GIRL FRIENDS®, INC.

**Buffalo** ~ Chapter Donation \* Mona L. Baskin \* June Simmons Barrow \* Shonda Brock \* Cynthia Brown  
D. Diane Cadle \* Brenda Chavers \* Nadine P. Clifford \* Lois Dabney \* Cecelia B. Henderson  
Laura M. Harris \* Francesca Mesiah \* Yvonne Minor-Ragan \* Pamela E. Murphy  
Emmekunla K. Nylander \* Rhona Osborne \* Joyce Ford Quick \* Kimberly Trammell \* Kathy Wood  
**Brooklyn** ~ Stacey Brewer \* Daryl Jordan-Washington \* Carole Temple Phillips \* Nola Lancaster Whiteman  
**California** ~ Chapter Donation \* Richardene Brewer \* Barbara B. Coleman \* Andrea L. Johnson  
Lisa A. Nichols \* Margaret Batchelor White \* Florence Young  
**Cincinnati** ~ Chapter Donation \* Regina Daily \* Lisa Lennon \* Gloria Riley  
**Cleveland** ~ Chapter Donation \* LaVerne Nichols Boyd \* Lois Gregory Crawford \* Marina B. Grant  
Gwendolyn Gregory Johnson \* Hilary Mason King \* Jacquelyn Nance  
**Columbia** ~ Chapter Donation \* Jodi Gallman \* Vada Love  
Janice Marshall \* Lynn Williams Rodgers  
**Dallas** ~ Mildred Carruthers \* Joan Sessoms Ford \* Ava Washington  
**Detroit** ~ Chapter Donation \* Trudy Duncombe Archer \* Janice Cosby Bridges \* Lynne F. Carter  
Ruth C. Carter \* C. Beth Duncombe \* Michelle Mills Faison \* Carla D. Jones \* Nancy E. Glover  
Rochelle D. Hurt \* Chacona Winters Johnson \* Bettye Arrington Martin \* Miriam B. Martin-Clark

Brenda McDaniel-Brown \* Dorothy Pelton Sorokas  
**Louisville** ~ Chapter Donation \* Alice Houston \* Elsie Kennedy  
 Belma Lunderman McClaskey \* Faye D. Owens  
**New Jersey** ~ Chapter Donation \* Gwendolyn Barrington Jackson \* Lynn Peters Lewis \* Michelle Richardson  
**New York** ~ Chapter Donation \* Cheryl Finley \* Benita Shobe \* Konnetta Sparks \* Audraine Wilson  
**Roanoke** ~ Chapter Donation \* Jennifer Alston \* Maria C. Burch \* Sandra E. Butcher  
 Mary C. Calloway \* Rheba Cannaday \* Doris N. Ennis \* Andrea Haley \* Helen C. Harris  
 Thelma T. Haynesworth \* Hermina W. Hendricks \* Patricia W. Henry \* Betty E. Kolb  
 Saron C. McEnheimer \* Francine Claytor McLaughlin \* Shirley O. Powell \* Carla Shepherd  
 Marzetta F. Sinkler \* Shirley T. Smith \* Leslie Taylor  
**Trenton** ~ Chapter Donation \* Elsie Allen \* Priscilla W. Brown \* Dianna Cassey \* Diane Clark \* Faye Coleman  
 Adrienne Collins \* Delene Copeland \* Kathleen Delmos \* Deanna Emerson \* Felicia Fritz-Lythcott  
 Margaret Gaines-Clark \* Dorothy J. Harper \* Sharon Henry \* Jewel M. Johnson \* Yvette Kenner  
 Gwendolyn Pearson \* Sandra Pemberton \* Florence Sharpless \* Carol J. Sills \* Judith C. Simpkins  
 Cheryl Y. Spicer \* Catherine Starghill \* Paula W. Taylor \* Bettye W. Thomas  
 Susan V. Vanburen \* Eva Watts \* Fay West \* Lanella H. Williams \* Yvette Williams

## NAMED SCHOLARSHIPS OF THE GIRL FRIENDS FUND, INC.

### GF GWENDOLYN G. JOHNSON SCHOLARSHIP

California Chapter of The Girl Friends®, Inc. \* Cleveland Chapter of The Girl Friends®, Inc.  
 Lois Gregory Crawford (Cleveland) \* Andrea L. Johnson (California) \* Gwendolyn Gregory Johnson (Cleveland)  
 Jacquelyn Nance (Cleveland) \* Florence Young (California)

### GF CAROLE TEMPLE PHILLIPS

Anita Cox Cobb (Durham) \* Carole Temple Phillips (Brooklyn)

## NON-MEMBERS/CORPORATIONS/FOUNDATIONS/TRUSTS

**Mother, GF Cecelia B. Henderson (Buffalo)** from Leon Henderson, Jr.  
 Mr. & Mrs. Demond Martin \* David Yurman Outlet, Las Vegas \* Eastern Bank  
**Edward Taylor Coombs Foundation (In Memory of Edward Taylor Coombs, Son of GF Forrestine and  
 BF Eric Coombs (Philadelphia))**

## PARTNERS (\$250 - \$999)

### INDIVIDUAL MEMBERS OF THE GIRL FRIENDS FUND, INCORPORATED

Laverne Nichols Boyd (Cleveland) \* Kimberly S. Budd (Boston) \* Mildred Carruthers (Dallas)  
 Donna Coaxum (Chicago) \* Michele Courton Brown (Boston) \* Patricia Collins (San Diego)  
 Elaine Leaphart Effort (Pittsburgh) \* Cheryl Finley (New York) \* Jodi Gallman (Columbia)  
 Joan Sessoms Ford (Dallas) \* Tiffani Greene (Potomac)  
 Cecelia B. Henderson (Buffalo) \* Andrea L. Johnson (California)  
 Gwendolyn Gregory Johnson (Cleveland) \* Carla D. Jones (Detroit)  
 Lynn Peters Lewis (New Jersey) \* Vada Love (Columbia) \* Esther Commander Marioneaux (Charlotte)  
 Janice Marshall (Columbia) \* Lisa A. Nichols (California) \* Carole Temple Phillips (Brooklyn)  
 Joyce Price (St. Louis) \* Eleanor Quash (Potomac) \* Joyce Ford Quick (Buffalo)  
 Marie Ray Scott (Las Vegas) \* Marita Turner (Potomac) \* Ava Washington (Dallas)  
 Nola Lancaster Whiteman (Brooklyn) \* Florence Young (California)

## DONATIONS BY CHAPTERS OF THE GIRL FRIENDS®, INC.

**Buffalo \* California \* Chicago \* Columbia \* Durham \* Fairfield County \* Memphis \* Nashville  
 New Jersey \* New York \* Newport News \* Philadelphia \* Roanoke \* San Diego \* Trenton**

## DONATIONS OF GIRL FRIENDS FUND, INC. MEMBERS BY CHAPTER OF THE GIRL FRIENDS®, INC.

**Charlotte** ~ Barbara W. Alston \* Esther Commander Marioneaux  
**Chicago** ~ Chapter Donation \* Donna Coaxum  
**Durham** ~ Chapter Donation \* Angela McAlister Berry \* Anita Cox Cobb  
Carolyn B. Collins \* Margot Minns Flood  
**Fairfield County** ~ Chapter Donation \* Deborah Marioneaux Allen \* Mary Childs  
**New Haven** ~ Clara Lee \* Shuana K. Tucker  
**Philidelphia** ~ Chapter Donation \* Phoede A. Haddon  
**Pittsburgh** ~ Elaine Leaphart Effort \* Della Hale \* Daisy Jeffries  
Darlene Jeffries-Schaller \* Gwendolyn Simmons  
**San Diego** ~ Chapter Donation \* Sarah E. Akinfosile \* Patricia Collins \* Vivian Tuck  
**Springfield** ~ Andrea S. Baker \* Robin Bell \* Gwendolyn Bones \* Teresa Burr \* Denise Cruse  
Carol Moore Cutting \* Betty Davis \* Marguerite Foster Franklin \* Valeria Hodges \* Tanya Jones  
Barbara Lanier \* Daphne Moore \* Phyllis Osbourne \* Tina Page \* Sharon Ralls  
Dora Robinson \* Rhonda Rowe \* Juanita Shavers \* Cheryl Stanley \* Bettye Webb

## IN MEMORIAM

**Fannie Sparrow Ford, Mother, Grandmother and Mother-In-Law** of  
GFs Joyce Ford Quick (Buffalo), Dr. Deanna Ford Horton (Potomac), Aricka Olivia Ford (Albany),  
Jameelee Sparrow (Albany) and Rolene Olivia Ford (Albany)  
**GF Dorothy Gaither (Potomac)** from GFs Tiffani Greene (Potomac) and Marita Turner (Potomac)  
**Deceased New Jersey Girl Friends** from The New Jersey Chapter of The Girl Friends®, Inc.  
**BF Damon P. Peters, Jr.** from Daughter, GF Lynn Peters Lewis (New Jersey)  
**GF Jean Rainer (Trenton)** from The Trenton Chapter of The Girl Friends®, Inc.  
**BF Jonathan Reed** from GF Joyce Price (St. Louis)  
**Deceased Roanoke Girl Friends and Boy Friends** from The Roanoke Chapter of The Girl Friends®, Inc.  
**GF Mildred Thomas (Dallas)** from GF Ava Washington (Dallas)  
**GF Lucy Thorpe (Trenton)** from The Trenton Chapter of The Girl Friends®, Inc.  
**GF Cindy Taylor Wolfe (Potomac)** from GF Eleanor Quash (Potomac)

## CELEBRATING

**My Grand Children, Bryce and Brynn Phillips and Austin Patience and Christening of Grandson, James Foster Phillips, IV** from GF Carole Temple Phillips (Brooklyn)  
**Happy Birthday, GF Patricia Collins (San Diego)** from Your BF, James Collins, II  
**My Grand Daughter, Hannah Eugene** from GF Elaine GF Leaphart Effort (Pittsburgh)

## NON-MEMBERS/CORPORATIONS/FOUNDATIONS/TRUSTS

Mr. & Mrs. William Byrd \* Mrs. Jane Patterson \* Ms. Tamara Thorn  
**Celebrating GF Cindy Carter Cole** ~ Dr. Elizabeth Alexander \* Mr. & Mrs. Gerald Chertavian  
Mr. & Mrs. Kevin Dasilva \* Dr. & Mrs. Clifford Grayer \* Mrs. Alicia Felton Greenaway \* Mrs. Juliette Mayers  
Oneunited Bank \* James L. Shepherd, MD \* Mrs. Benaree P. Wiley

**Celebrating GFs Chery Whiteman Brooks (Brooklyn), Cindy Carter Cole (Boston) and Cheryl Finley (New York)** from Mrs. Merele Williams Adkins

## FRIENDS (UP TO \$ 249)

### INDIVIDUAL MEMBERS OF THE GIRL FRIENDS FUND, INCORPORATED

Sarah E. Akinfosile (San Diego) \* Deborah Marioneaux Allen (Fairfield County) \* Elsie Allen (Trenton)  
Kaye Long Allen (Boston) \* Barbara W. Alston (Charlotte) \* Jennifer Alston (Roanoke) \* Mildred Anglin (Boston)  
Trudy Duncombe Archer (Detroit) \* Andrea S. Baker (Springfield)  
Rebecca McLeod Barnett (Boston) \* June Simmons Barrow (Buffalo) \* Mona L. Baskin (Buffalo)



Robin Bell (Springfield) \* Angela McAlister Berry (Durham) \* Geraldine Bolden (Boston)  
 Gwendolyn Bones (Springfield) \* Nina Bowman (Boston) \* Leera Briceno (Boston)  
 Janice Cosby Bridges (Detroit) \* Richardene Brewer (California) \* Stacey Brewer (Brooklyn)  
 Shonda Brock (Buffalo) \* Cynthia Brown (Buffalo) \* Ellen Brown (Las Vegas) \* Priscilla W. Brown (Trenton)  
 Maria C. Burch (Roanoke) \* Teresa Burr (Springfield) \* Saundra E. Butcher (Roanoke) \* D. Diane Cadle (Buffalo)  
 Mary C. Calloway (Roanoke) \* Rheba Cannaday (Roanoke) \* Lynne F. Carter (Detroit) \* Ruth C. Carter (Detroit)  
 Dianna Cassey (Trenton) \* Brenda Chavers (Buffalo) \* Mary Childs (Fairfield County) \* Diane Clark (Trenton)  
 Nadine P. Clifford (Buffalo) \* Anita Cox Cobb (Durham) \* Barbara B. Coleman (California)  
 Faye Coleman (Trenton) \* Adrienne Collins (Trenton) \* Carolyn B. Collins (Durham)  
 B. Stephanie Commander (Richmond) \* Delene Copeland (Trenton)  
 Lois Gregory Crawford (Cleveland) \* Denise Cruse (Springfield)  
 Carol Moore Cutting (Springfield) \* Lois Dabney (Buffalo) \* Regina Daily (Cincinnati)  
 Suzette Dave (Columbus) \* Betty Davis (Springfield)  
 Kathleen Delmos (Trenton) \* C. Beth Duncombe (Detroit) \* Rosa Edwards (New Orleans)  
 Deanna Emerson (Trenton) \* Doris N. Ennis (Roanoke) \* Kathy Duffy Espy (Columbus)  
 Michelle Faison (Detroit) \* Tanya P. Flanagan (Las Vegas) \* Hillarie A. Flood (Potomac) \* Margot Minns Flood (Durham)  
 Marguerite Foster Franklin (Springfield) \* Felicia Fritz-Lythcott (Trenton) \* Margaret Gaines-Clark (Trenton)  
 Yvonne Gandy (Toledo) \* Nancy E. Glover (Detroit) \* Marina B. Grant (Cleveland) \* Phoebe A. Haddon (Philadelphia)  
 Della Hale (Pittsburgh) \* Andrea Haley (Roanoke) \* Dorothy J. Harper (Trenton) \* Helen C. Harris (Roanoke)  
 Laura M. Harris (Buffalo) \* Thelma T. Haynesworth (Roanoke) \* Estelle Hector (Boston)  
 Hermina W. Hendricks (Roanoke) \* Patricia Henry (Roanoke) \* Sharon Henry (Trenton)  
 Valeria Hodges (Springfield) \* Alice Houston (Louisville) \* Rochelle D. Hurt (Detroit)  
 Gwendolyn Barrington Jackson (New Jersey) \* Daisy Jeffries (Pittsburgh)  
 Darlene Jeffries-Schaller (Pittsburgh) \* Chacona Winters Johnson (Detroit) \* Jewel M. Johnson (Trenton)  
 Louise S. Johnson (Boston) \* Tanya Jones (Springfield)  
 Daryl Jordan-Washington (Brooklyn) \* Carol Y. Kelley (Boston) \* Elsie Kennedy (Louisville)  
 Yvette Kenner (Trenton) \* Hillary Mason King (Cleveland) \* Laverne Dukes King (Columbus)  
 Kathleen Turner Knight (Las Vegas) \* Betty E. Kolb (Roanoke) \* Barbara Lanier (Springfield)  
 Clara Lee (New Haven) \* Mallika Marshall (Boston) \* Bettye Arrington Martin (Detroit)  
 Miriam B. Martin-Clark (Detroit) \* Belma Lunderman McClaskey (Louisville) \* Brenda McDaniel-Brown (Detroit)  
 Saron C. McEnheimer (Roanoke) \* Francine Claytor McLaughlin (Roanoke) \* Francesca Mesiah (Buffalo)  
 Yvonne Minor-Ragan (Buffalo) \* Danette Mitchell (Las Vegas) \* Daphne Moore (Springfield)  
 Angela Motley (Boston) \* Pamela E. Murphy (Buffalo) \* Jacquelyn Nance (Cleveland)  
 Emmekunla K. Nylander (Buffalo) \* Phyllis Osbourne (Springfield) \* Rhona Osborne (Buffalo)  
 Faye D. Owens (Louisville) \* Janet Palmer Owens (Boston) \* Tina Page (Springfield)  
 Gwendolyn Pearson (Trenton) \* Dorothy Pelton-Sorokas (Detroit) \* Sandra Pemberton (Trenton)  
 Adrienne Powell (Washington) \* Shirley O. Powell (Roanoke) \* Sharon Ralls (Springfield)  
 Kimberly Rawlins (Boston) \* Dora Robinson (Springfield) \* Lynn Williams Rodgers (Columbia)  
 Rhonda Rowe (Springfield) \* Florence Sharpless (Trenton) \* Juanita Shavers (Springfield)  
 Carla Shepherd (Roanoke) \* Benita Shobe (New York) \* Carol J. Sills (Trenton)  
 Gwendolyn Simmons (Pittsburgh) \* Judith C. Simpkins (Trenton) \* Marzetta F. Sinkler (Roanoke)  
 Brenda Smith (Albany) \* Ernestine Randall Smith (Boston) \* Shirley T. Smith (Roanoke)  
 Jennifer Smith-Williams (Boston) \* Konnetta Sparks (New York) \* Cheryl Y. Spicer (Trenton) \* Cheryl Stanley (Springfield)  
 Catherine Starghill (Trenton) \* Kathy Taylor (Boston) \* Leslie Taylor (Roanoke) \* Paula W. Taylor (Trenton)  
 Bettye W. Thomas (Trenton) \* Claudia C. Thompson (Potomac) \* Kim Thornton (Boston)  
 Kimberly Trammel (Buffalo) \* Shuana K. Tucker (New Haven) \* Susan V. Vanburen (Trenton)  
 Karen Holmes Ward (Boston) \* Harriett Watson (Las Vegas) \* Eva Watts (Trenton) \* Bettye Webb (Springfield)  
 Fay West (Trenton) \* Margaret Batchelor White (California) \* Bettyjean Wilkinson (Las Vegas)  
 Lanella H. Williams (Trenton) \* Yvette Williams (Trenton) \* Audraine Wilson (New York)  
 Chacona Winters-Johnson (Detroit) \* Kathy Wood (Buffalo)

## DONATIONS BY CHAPTER OF THE GIRL FRIENDS®, INC.

Greenville \* Las Vegas \* Loudon County

## IN MEMORIAM

**Son, P. David Alston** from GF Barbara W. Alston (Charlotte)  
**Husband, BF Martin Akinfosile** from GF Sarah E. Akinfosile (San Diego)  
**BF John Attaway** from GFs Deborah Marioneaux Allen (Fairfield County), Angela McAlister Berry (Durham),  
Cindy Carter Cole (Boston), Yvonne Gandy (Toledo) and  
Esther Commander Marioneaux (Charlotte)  
**GF Mary W. Boyd (Cleveland)** from GF Marina B. Grant (Cleveland)  
**Richard Brown, Father, Grandfather, Father-In-Law** to GFs Richardene Brewer (California),  
Stacey Brewer (Brooklyn), and Dave Brewer  
**Richard Brown** from GFs Angela McAlister Berry (Durham) and Cindy Carter Cole (Boston)  
**Mother In Law, Pauline Butcher** from GF Sandra E. Butcher (Roanoke)  
**Husband, BF Irvin Cannaday, Jr.** from GF Rheba Cannaday (Roanoke)  
**Brother, James Carpenter** from GF Clara Lee (New Haven)  
**GF Carolyn M. Carter (Life)** from GFs Rosa H. Edwards (New Orleans),  
Margot Minns Flood (Durham) and Carol Y. Kelley (Boston)  
**GF Natalie Beale Claytor** from GF Francine Claytor McLaughlin (Roanoke)  
**BF George W. Cox, Jr.** from GF Anita Cox Cobb (Durham)  
**GF Phyllis Crawley (Columbus)** from GF Suzette Scarver Dave (Columbus)  
**Husband, BF Coley Davis, Jr.** from GF Betty Davis (Springfield)  
**GF Susan Fain Davis** from GF Hermina W. Hendricks (Roanoke)  
**With Love of GF Helen Jones Duffy (Toledo)** from Her Two Daughters and Four Granddaughters, All Girl Friends!  
**GF Lynne King Eberhart (Brooklyn)** from GF Daryl Jordan-Washington (Brooklyn)  
**Mother, Evelyn Ash Fenner** from GF Sandra E. Butcher (Roanoke)  
**GF Beatrice Foreman (Fairfield County)** from GF Mary Childs (Fairfield County)  
**Ethel Freeman** from GF Betty E. Kolb (Roanoke)  
**Mother, GF Lillian Gregory (Cleveland)** from GF Lois Gregory Crawford (Cleveland)  
**GF Marguerite Hall (Cincinnati)** from GF Regina Daily (Cincinnati)  
**GF Ida B. Haddon (New Jersey)** from Daughter, GF Phoebe A. Haddon (Philadelphia)  
**Husband, BF George W. Harris, Jr.** from GF Helen C. Harris (Roanoke)  
**BF George W. Harris** from GF Thelma T. Haynesworth (Roanoke)  
**Mother, Ina M. Hall** from GF Faye D. Owens (Louisville)  
**Friend, Cornelius R. Hill** from GF Juanita Shavers (Springfield)  
**Mother, GF Elizabeth Jordan (Brooklyn)** from GF Daryl Jordan-Washington (Brooklyn)  
**GF Gwendolyn Lawrence (Roanoke)** from GF Patricia W. Henry (Roanoke)  
**GF Pauline Weeden Maloney** from GF Hermina W. Hendricks (Roanoke)  
**GF Thomasina Mason (Cleveland)** from GF Hilary Mason King (Cleveland)  
**Clark Kirksey Mixon, Brother of GF Sonya Goldsboro (Las Vegas)** from GF Cindy Carter Cole (Boston)  
**Husband, BF Everard Osbourne** from GF Phyllis Osbourne (Springfield)  
**GFs Julia Patterson (Roanoke)** from GFs Maria C. Burch (Roanoke) and Marzetta F. Sinkler (Roanoke)  
**BF Damon P. Peters, Jr.** from GF Cindy Carter Cole (Boston)  
**Husband, BF Thurman A. Riley** from GF Gloria Riley (Cincinnati)  
**Husband, BF Paul A. Simmons** from GF Gwendolyn Simmons (Pittsburgh)  
**Husband, BF David Smith** from GF Brenda Smith (Albany)  
**Mother, GF Flora Turner** from GF Kathleen Turner Knight (Las Vegas)  
**GF Karen Hodges Walker (Boston)** from GF Rebecca McLeod Barnett (Boston) and Cindy Carter Cole (Boston)  
**Aunt, GF Clifford Irene Wells (Orlando)** from GF Laverne Dukes King (Columbus)  
**Brother, Wendell Williams** from GF Lynn Williams Rodgers (Columbia)  
**Jessie Wilson (Washington)** from GFs Maria C. Burch (Roanoke) and Marzetta F. Sinkler (Roanoke)  
**GF Cynthia Taylor Wolf (Potomac)** from GFs Carla Shepherd (Roanoke),  
Leslie Taylor (Roanoke) and Claudia C. Thompson (Potomac)  
**BF Rev. Dr. J. Eugene Young** from GF Saron C. McEnheimer (Roanoke)

## CELEBRATING

**The Birth of Hugh W. Ennis, II** from GF Doris N. Ennis (Roanoke)

**Friendship With GF Grace Fitzgerald (Roanoke)** from GF Andrea Haley (Roanoke)  
**The Hard Work of The Fund Board of Directors** from GF Audraine Wilson (New York)  
**The Birthday of Mother In Law, GF Jean Hurd (Boston)** from GF Mallika Marshall (Boston)  
**The Birthday of GF Joan B. James (Pittsburgh)** from GFs Della Hale (Pittsburgh) and Gwendolyn Simmons (Pittsburgh)  
**The Birthday of Mother, GF Daisy Jeffries (Pittsburgh)** from GF Darlene Jeffries-Schaller (Pittsburgh)  
**GF Esther Commander Marioneaux (Charlotte)** from GF Daryl Jordan-Washington (Brooklyn)  
**The Graduation of Grandson, Jamal K. Powell** from GF Shirley O. Powell (Roanoke)  
**My Son, Lance Sako** from GF Jennifer Alston (Roanoke)  
**BF Dawson L. Smith** from His GF, Shirley T. Smith (Roanoke)  
**GF Phyllis M. Taylor (Potomac)** from GF Leslie Taylor (Roanoke)  
**The 30th Anniversary of The California Chapter of The Girl Friends®, Inc.**  
 from The Las Vegas Chapter of The Girl Friends®, Inc.  
**The 60th Anniversary of The Columbus Chapter of The Girl Friends®, Inc.**  
 from The Las Vegas Chapter of The Girl Friends®, Inc.  
**The 60th Anniversary of The Detroit Chapter of The Girl Friends®, Inc.**  
 from The Las Vegas Chapter of The Girl Friends®, Inc.  
**The Las Vegas Chapter of The Girl Friends®, Inc.** from GF Tanya P. Flanagan (Las Vegas)  
**The 80th Anniversary of The Girl Friends®, Inc.** from GF Bettyjean Wilkinson (Las Vegas)

## NON-MEMBERS/CORPORATIONS/FOUNDATIONS/TRUSTS

ZH Racine Exclusive Jewelry \* Mr. & Mrs. Gerald Harris \* Mr. & Mrs. Burt Clemons  
**GF Cecelia B. Henderson (Buffalo)** from Alicia D. Givens

## CELEBRATING

**GF Cindy Carter Cole (Boston)** from Mr. & Mrs. Ronald Davenport, Sr., Mrs. Joanne L. Bates, Mrs. Claudette Crouse, Mrs. Barbara Cruz, Dr. Tamara Cadet, Mr. & Mrs. Alfred Little, Jr., Mrs. Veronica Lytle, and Dr. & Mrs. Augustus White  
**GF Cecelia B. Henderson (Buffalo)** from Alicia D. Givens  
**GF Casma Huie (Potomac)** from Mrs. Terri Clemons Clark and Ms. Joan Payseur

## IN MEMORIAM

**GF Bettye M. Blackman (Buffalo)** from Mr. & Mrs. Willie Evans  
**GF Carolyn M. Carter** from Mrs. Mary O. Cooper (Her Best Friend), and Donna L. Hardy  
**GF Lillian Gregory** from Mr. & Mrs. Darrin Carter  
**GF Lucy Thorpe** from Ms. Patricia Lloyd  
**GF Jessie Wilson (Washington)** from Mrs. Monique Brown

# THE GIRL FRIENDS FUND, INCORPORATED

## BOARD OF DIRECTORS

### Officers



GF Cynthia Carter Cole, President (Boston)



GF Cecelia B. Henderson, Vice. President (Buffalo)



GF Lynn Peters Lewis, Secretary (New Jersey)



GF Casma Huie, Assistant Secretary (Potomac)



GF Pamela J. Boone, Treasurer (Boston)



GF Faye Owens, Financial Secretary (Louisville)



GF Cheryl Finley, Parliamentarian (New York)

### Directors



GF Jacqueline F. Bontemps (Newport News)



GF LaVerne Nichols Boyd (Cleveland)



GF Sonya Goldsboro (Las Vegas)



GF Deborah L. Perry (Pittsburgh)



GF Michelle E. Richardson (New Jersey)



GF Nedra Starling (Cleveland)



GF Greta Pope Wimp (Chicago)



GF Benita F. Shobe  
National President, The Girl Friends®, Incorporated  
Ex Officio Member





The Girl Friends Fund, Inc. Registered Agent  
10011 Silver Creek Road Dallas, Texas 75243  
Email: [girlfriendsfund@gmail.com](mailto:girlfriendsfund@gmail.com)  
Please visit our website <http://girlfriendsfund.org>

Designed by: Kandace Clifton  
Website: [behance.net/KandiCee](http://behance.net/KandiCee)  
E-Mail: [kandaceclifton@rocketmail.com](mailto:kandaceclifton@rocketmail.com)